

GAME OVER — HATTERAS



Builder: HATTERAS

Year Built: 1991

Model: Motor Yacht

Price: PRICE ON APPLICATION

Location: United States

LOA: 70' 0" (21.34m)

Beam: 18' 2" (5.54m)

Min Draft: 5' 5" (1.65m)

Our experienced yacht broker, Andrey Shestakov, will help you choose and buy a yacht that best suits your needs **Game Over — HATTERAS** from our catalogue. Presently, at Shestakov Yacht Sales Inc., we have a wide variety of yachts available on our sale's list. We also work in close contact with all the big yacht manufacturers from all over the world.

If you would like to buy a yacht **Game Over — HATTERAS** or would like help answering any questions concerning purchasing, selling or chartering a yacht, please call **+1(954)274-4435**

TABLE OF CONTENTS

TABLE OF CONTENTS	2
SPECIFICATIONS	5
Basic Information	5
Dimensions	5
Speed, Capacities and Weight	5
Accommodations	5
Hull and Deck Information	5
Engine Information	6
DETAILED INFORMATION	7
Overview	7
Salon	7
Galley And Breakfast Nook	7
Forward Guest Accommodations	7
Aft Master Stateroom	7
Laundry Room	7
Main Deck	8
Foredeck	8
Aft Deck	8
Side Decks	8
Wheelhouse	8
Cockpit	8
Engine Room	9
Exclusions	9
Disclaimer	9
PHOTOS	10
Profile	10
Profile	10
Profile	10

Cockpit	10
Bow	11
Bow	11
Bow	11
Aft Deck	11
Cockpit	11
Cockpit	11
Cockpit	12
Flybridge	12
Flybridge	12
Flybridge	12
Flybridge	12
Flybridge	12
Passageway	13
Flybridge	13
Salon	13
Salon	13
Salon	13
Pilothouse	13
Pilothouse	14
Pilothouse	14
Galley	14
Galley	14
Dinette	15
Laundry	15
Laundry	15
Forward Stateroom	15
Master Stateroom	16
Master Stateroom	16

Master Head	16
Master Head	16
VIP Stateroom	16
VIP Stateroom	16
VIP Stateroom	17
Guest Stateroom	17
Guest Stateroom	17
Forward Head	17
Guest Head	18
Engine Room	18
Engine Room	18
Engine Room	18
CONTACTS	19
Contact details	19
Telephones	19
Office hours	19
Address	19

SPECIFICATIONS

Basic Information

Category: Motor Yacht

Sub Category: Cockpit

Model Year: 1991

Year Built: 1991

Country: United States

Fly Bridge: Yes

Cockpit: Yes

Dimensions

LOA: 70' 0" (21.34m)

Beam: 18' 2" (5.54m)

Min Draft: 5' 5" (1.65m)

Speed, Capacities and Weight

Water Capacity: 345 Gallons

Holding Tank: 180 Gallons

Fuel Capacity: 1596 Gallons

Accommodations

Total Cabins: 4

Total Berths: 6

Sleeps: 8

Total Heads: 4

Hull and Deck Information

Hull Material: Fiberglass

Engine Information

Engines: 2

Manufacturer: Detroit Diesel

Model: 12V92

Engine Type: Inboard

Fuel Type: Diesel

DETAILED INFORMATION

Overview

This rare 70' Hatteras Motor Yacht with walkaround decks and cockpit is by far the nicest on the market. She has gone through an entire refit which included a full pain job, completely redone custom interior and overhauled engines. No expense was spared. "Game Over" has been kept up to the highest standard by her current owner and it shows.

Salon

Entering the salon through the aft deck sliding door, you find yourself in a Hatteras of its own. The galley was opened up to the salon in the 2008 refit. All of the counter surfaces in the galley, dining room and salon are top of the line granite. Every surface has been redone from the custom leather sofa and side chair to the wall treatments, trim and carpet. The flat screen TV lowers flush into the granite counter top when not in use for a clean look. **Features:** Sharp Aquos Flat Screen TV Sony Blue Ray player Harman?Kardon-3490 Stereo with XM Direct TV

Galley And Breakfast Nook

The Galley is open to the salon and features all stainless appliances also added during the 2008 refit. Located adjacent to the galley, is a breakfast nook with granite table and leather seating.

Features: GE Profile Dishwasher GE Profile Cook Top And Oven GE Profile Microwave/Convection Oven Chrome Sink GE Profile Side By Side Fridge/Freezer InSinkErator Instant Hot Dispenser Badger InSinkErator 1/3 Hp Garbage Disposal

Forward Guest Accommodations

Moving downstairs forward there are three staterooms. Every inch has been redone from the carpets to the wall treatments. Forward is the bunk cabin with its own head and walk in shower. This cabin has extra storage room with slide out shelving for storage. To port is a twin cabin and to starboard a day head with walk-in shower. Located aft is the VIP stateroom with a queen size bed, full size head with bidet and shower with tub.

Aft Master Stateroom

Below aft is the full beam master stateroom with queen size bed, Bose sound system and Sharp Aquos flat screen TV. The master head features a head, bidet and walk in shower with tub.

Laundry Room

Forward of the master to port is the laundry room with full size GE Profile side by side washer and dryer and ample storage.

Main Deck

Enter the vessel from the swim platform onto the cockpit. Taking the Starboard stairwell to the main level, takes you to the open aft deck. This area features a large granite dining table for entertaining. Forward on either side of the full walk around deck is a pleasant seating area on the bow. The entire exterior of this boat was painted during the 2008 refit, which still looks like new. "Game Over" is owner friendly offering a low maintenance exterior. This yacht is a true beauty!

Foredeck

S&C Chiavari Windlass Fresh Water Washdown Saltwater Wash Down Foredeck Seating & Storage

Aft Deck

Custom Granite Table Garelick Folding chairs (4) Ray Marine Docking Camera

Side Decks

Marquipt Vertical Ladder Marquipt 8 step Tide Rider Stairs Port & Starboard Shore Power Water & cable TV Hook Ups

Wheelhouse

Custom Leather Covered Helm Chair All Surfaces Redone Simrad Auto Pilot Ray Marine E120 Maxwell Windlass Remote Control Vetus Bow And Stern Thruster Controls Furuno Depth Sounder Furuno SSB Transceiver FS-1550IT Naiad Role Control System

Cockpit

Docking Station Vetus Bow And Stern Thruster Controls Hatteras Rod Holders Large Storage Lockers With Rod Storage Port & starboard 50 amp Power Cord Glendinnings Cable TV, Phone & Water Hook Up Below Deck Storage Custom Granite Table Garelick Folding Chairs (4) Raymarine Docking Camera

Engine Room

Engines have 200 +/- hrs since major overhaul in 2008 Kidde Fire Suppression System Naiad Stabilizers Bradford 40 gal White Water Heater Nutone Central Vac 24 V Electrical Systems Sentry Batter Charger 24V, 60A Vetus Battery Charger 24V, 65A Volt master 60-50A High Efficiency battery Equalizer Generator Room Onan 25 Kw Generator with 2,600 hours +/- Sea Recovery Watermaker Cruisair Compressors (8) Speed Air 1 Hr Air Compressor

Exclusions

Owner's personal belongings.

Disclaimer

The Company offers the details of this vessel or yacht in good faith but cannot guarantee or warrant the accuracy of this information nor warrant the condition of the vessel. A buyer should instruct his representatives, agents, or his surveyors, to investigate such details as the buyer desires validated. This vessel or yacht is offered subject to prior sale, price change, or withdrawal without notice.

PHOTOS

Profile



Profile



Profile



Cockpit



Bow



Bow



Bow



Aft Deck



Cockpit



Cockpit



Cockpit



Flybridge



Flybridge



Flybridge



Flybridge



Flybridge



Flybridge



Passageway



Salon



Salon



Salon



Pilothouse



Pilothouse



Pilothouse



Galley



Galley



Dinette



Laundry



Laundry



Forward Stateroom



Master Stateroom



Master Stateroom



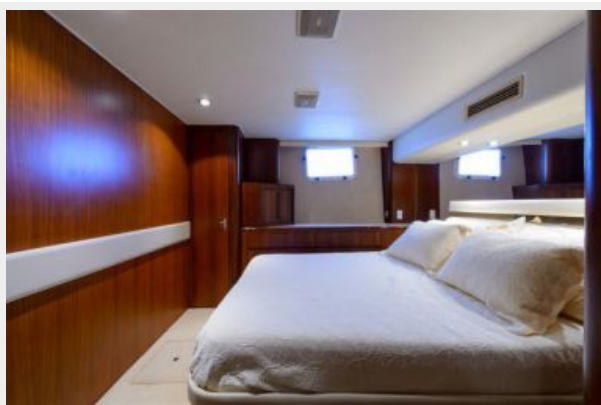
Master Head



Master Head



VIP Stateroom



VIP Stateroom



VIP Stateroom



Guest Stateroom



Guest Stateroom



Forward Head



Guest Head



Engine Room



Engine Room



Engine Room



CONTACTS

Andrey Shestakov, leading yacht broker of the sales department of Shestakov Yacht Sales Inc. Shestakov Yacht Sales Inc., the official representative of the Miami/Fort Lauderdale FL headquarters.

Contact details

Email: andrey@shestakovyachtsales.com

Web: shestakovyachtsales.com/en/

Telephones

USA: +1(954)274-4435

Office hours

Monday – Saturday: **9:00 - 21:00** EDT

Sunday: **closed**

Address



Harbour Towne Marina, 850 NE 3rd St,
STE 213, Dania, FL 33004