

LION'S SHARE — VIKING



Builder: [VIKING](#)

LOA: 56' 0" (17.07m)

Year Built: 2007

Beam: 18' 2" (5.54m)

Model: Sport Fisherman

Price: PRICE ON APPLICATION

Location: United States

Our experienced yacht broker, Andrey Shestakov, will help you choose and buy a yacht that best suits your needs **Lion's Share — VIKING** from our catalogue. Presently, at Shestakov Yacht Sales Inc., we have a wide variety of yachts available on our sale's list. We also work in close contact with all the big yacht manufacturers from all over the world.

If you would like to buy a yacht **Lion's Share — VIKING** or would like help answering any questions concerning purchasing, selling or chartering a yacht, please call **+1(954)274-4435**

TABLE OF CONTENTS

TABLE OF CONTENTS	2
SPECIFICATIONS	5
Overview	5
Basic Information	5
Dimensions	5
Speed, Capacities and Weight	5
Accommodations	5
Hull and Deck Information	6
Engine Information	6
DETAILED INFORMATION	7
Accommodations	7
Galley	7
Flybridge	7
Electronics	8
Deck & Exterior	8
Cockpit	8
Mechanical	8
Engine Room	8
Additional	9
Recent Upgrades	9
Disclaimer	9
Exclusions	9
Disclaimer	9
PHOTOS	10
Interior	10
Foredeck	10
Exterior	10
Transom	10

Cockpit	11
Flybridge	11
Helm	11
Helm	11
Flybridge	11
Flybridge	11
Salon	12
Salon	12
Salon	12
Galley	12
Dinette	12
Galley	12
Companionway	13
Washer & Dryer	13
VIP Stateroom	13
VIP Stateroom	13
Guest Stateroom	14
Guest Head	14
Master Stateroom	14
Master Stateroom	14
Master Stateroom Head	15
Master Stateroom Head	15
Engine Room	15
Engine Room	15
Engine Room	16
Engine Room	16
Let's Go!	16
CONTACTS	17
Contact details	17

Telephones	17
Office hours	17
Address	17

SPECIFICATIONS

Overview

This 2007 Viking 56 Convertible was born to catch fish. And fit with 1520 MTU's you can chase down a lot of fish! But like every good Viking, if you prefer, you can just cruise and have your fish served to you at a marina restaurant! MTU 2000 Hour Service Complete at 1800 hrs - Spring 2014.

This Sea Foam Green hull beauty has had over \$250K worth of upgrades in the last 24 months. She's ready to go where ever there's water.....AND will make her owner proud in every Port !!

Basic Information

Category: Sport Fisherman

Sub Category: Convertible

Model Year: 2007

Year Built: 2007

Country: United States

Vessel Top: Hardtop

Fly Bridge: Yes

Cockpit: Yes

Dimensions

LOA: 56' 0" (17.07m)

Beam: 18' 2" (5.54m)

MFG Length: 57' 6" (17.53m)

Speed, Capacities and Weight

Displacement: 74400 Pounds

Water Capacity: 240 Gallons

Holding Tank: 125 Gallons

Fuel Capacity: 1501 Gallons

Accommodations

Total Cabins: 3

Total Heads: 3

Hull and Deck Information

Hull Material: Fiberglass

Hull Color: Sea Foam Green

Engine Information

Engines: 2

Manufacturer: MTU

Model: 12V-2000 M91

Engine Type: Inboard

Fuel Type: Diesel

DETAILED INFORMATION

Accommodations

SALON

Raised electrical panel Kenmore clear icemaker Viking home theater upgrade 42" flat panel TV Storage behind TV Teak valances Amtico teak and holly flooring at salon entrance Teak face on aft side of galley island Teak cocktail table

MASTER STATEROOM

Athwartship berth with lift up storage below Memory foam mattress with gel top - 2013 20" flat panel TV w/ teak frame Overhead deck hatch with ocean / air sun screen –shade Hanging closets aft Teak night stands Abundant storage

MASTER HEAD

Mirrored ceiling -2012 Full mirror vanity backsplash Amtico teak and holly flooring Once piece glass shower door Linen closet Custom wallpaper Granite sink vanity Opis Magnum VacuFlush head

FORWARD STATEROOM

VIP crossover layout consisting of double berth with upper single berth 15" flat panel TV Overhead deck hatch with ocean / air sun screen –shade Hanging locker Mirrored forward bulkhead

FORWARD STATEROOM HEAD

Full mirror vanity backsplash Amtico teak and holly flooring Custom wallpaper Granite sink vanity Opis Magnum VacuFlush head

STARBOARD STATEROOM

Crossover bunks with drawers and cabinet storage Hanging locker Separate stacked washer – dryer units

Galley

Under counter refrigerators and freezer drawers Granite galley countertop Custom Amtico flooring Chrome faucet Teak backsplash Teak dinette table with teak base Garbage disposal

Flybridge

Palm Beach custom tower – 12 light system and reconfigured to be removable for Great Lakes access Fiberglass hardtop with molded quartz lights EZ2CY 3 sided track to track enclosure with curtain vents Release helm chairs Recessed electronics boxes Radio box Custom helm pod DDEC single lever controls 6 rod rocket launcher Flybridge installed with no exposed fasteners Flybridge removable jump seat DDEC trolling valves Electric teaser reels Power assist steering Teak flybridge step treads

Electronics

(2) 12" Simrad screens Furuno black Box Radar/GPS/Chartplotter/ Fish Finder Northstar 15" 6000i GPS/Chartplotter Furuno 12" Fish finder – cockpit Robertson AP25 Autopilot (2) Icom IC-M602 VHF Radios with remote mics Furuno RD30 Depth/Log KVH Trackphone Flir Nightvision 9" & 14" Furuno iTouch displays - Tower

Deck & Exterior

Oval exhaust outlets Fresh water wash down in anchor locker Rupp outriggers Painted rub rail to match gel coat Fiberglass side thru hulls Repainted black mask – 2014 Under mounted side handrails that wrap 18" around front of bridge Hull and superstructure Permagard Lemar V4 SS Windlass

Cockpit

Live well – plumbed transom box Refrigerated cockpit step Prepped and prewired for crushed ice machine Mezzanine Teak cockpit sole Teak cockpit coaming Teak transom Release fighting chair with offset - 2014 "T" in water inlet to fill water tank in cockpit Fishbox Stainless steel gas springs on fish box lids Stainless steel gas springs port and starboard sole boxes

Mechanical

2000 hour MTU service - spring 2014 Awlgrip engine room and bilges Awlgrip brass thru hulls Prep and prewire for water maker 24V fuel priming pumps Snow white fuel filters and pumps Line from oil change system to cockpit Dual power steering pumps 110V outlet on entranceway bulkhead Power assisted hydraulic steering DDEC trolling valves

Engine Room

2000 hour MTU service complete – 2014 Awlgrip engine room and bilges Awlgrip all brass thru-hulls Prep and prewire for watermaker 24V fuel priming pumps Dual racor fuel filters Snow white fuel filters and pumps Line from oil change system to cockpit Dual power steering pumps 110V outlet on entranceway 21 KW Onan generator with gas/ water seperater

Additional

Central vac Prop smith

Recent Upgrades

2000 hour MTU service complete- 2014 Repainted black mask – 2014 Palm Beach Tower, reconfigured hard top which is painted W/ 12 volt lighting system...removable for the Great Lakes access Interior soft goods salon and strms bed spreads and pillows– 2013 Master stateroom head board – 2013 Release fighting chair -2013 Washer / Dryer - 2013 Graphite cutlass bearings – 2012 Teak transom – 2012 Teak mezzanine – 2012 Stereo receiver - 2012

Disclaimer

The Company offers the details of this vessel in good faith but cannot guarantee or warrant the accuracy of this information nor warrant the condition of the vessel. A buyer should instruct his agents, or his surveyors, to investigate such details as the buyer desires validated. This vessel is offered subject to prior sale, price change, or withdrawal without notice.

Exclusions

Owner's personal belongings.

Disclaimer

The Company offers the details of this vessel or yacht in good faith but cannot guarantee or warrant the accuracy of this information nor warrant the condition of the vessel. A buyer should instruct his representatives, agents, or his surveyors, to investigate such details as the buyer desires validated. This vessel or yacht is offered subject to prior sale, price change, or withdrawal without notice.

PHOTOS

Interior



Foredeck



Exterior



Transom



Cockpit



Flybridge



Helm



Helm



Flybridge



Flybridge



Salon



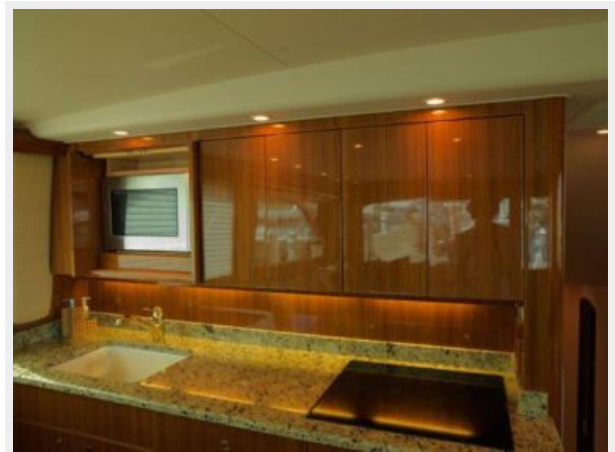
Salon



Salon



Galley



Dinette



Galley



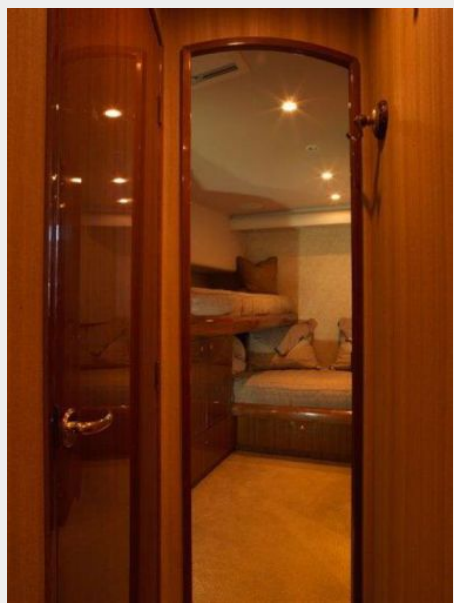
Companionway



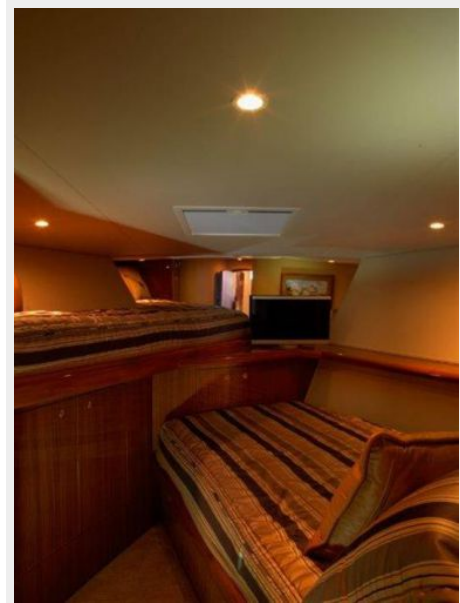
Washer & Dryer



VIP Stateroom



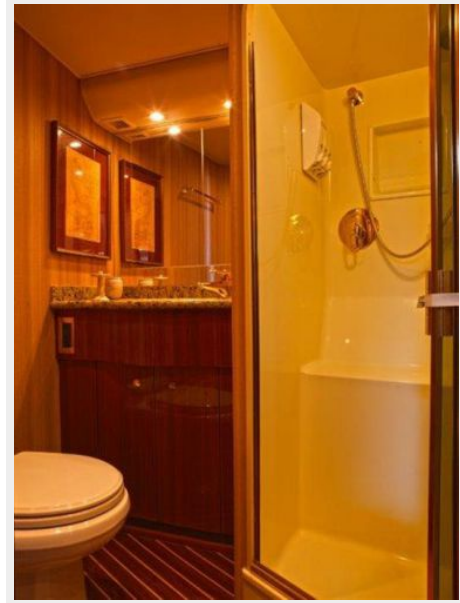
VIP Stateroom



Guest Stateroom



Guest Head



Master Stateroom



Master Stateroom



Master Stateroom Head



Master Stateroom Head



Engine Room



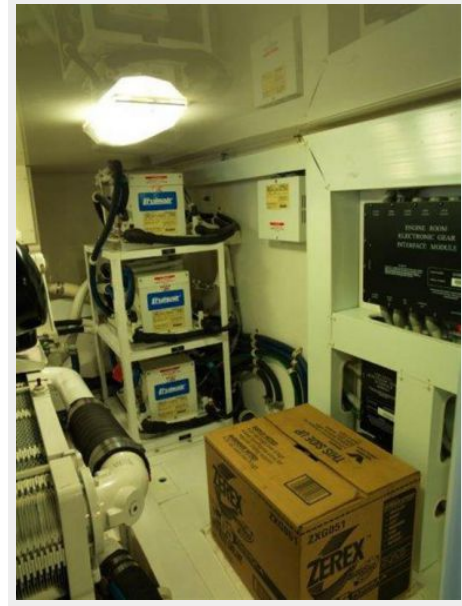
Engine Room



Engine Room



Engine Room



Let's Go!



CONTACTS

Andrey Shestakov, leading yacht broker of the sales department of Shestakov Yacht Sales Inc. Shestakov Yacht Sales Inc., the official representative of the Miami/Fort Lauderdale FL headquarters.

Contact details

Email: andrey@shestakovyachtsales.com

Web: shestakovyachtsales.com/en/

Telephones

USA: +1(954)274-4435

Office hours

Monday – Saturday: **9:00 - 21:00** EDT

Sunday: **closed**

Address



Harbour Towne Marina, 850 NE 3rd St,
STE 213, Dania, FL 33004