

WHITE CAPPS — FAIRLINE



Судостроитель: FAIRLINE

Год постройки: 2000

Модель: Моторная яхта

Цена: **ЦЕНА ЯХТЫ ПО ЗАПРОСУ**

Местонахождение: United States

Длина общая: 62' 0" (18.90m)

Ширина: 16' 5" (5.00m)

Макс. осадка: 4' 6" (1.37m)

Крейс. скорость: 28 Kts. (32 MPH)

Макс. скорость: 33 Kts. (38 MPH)

Купить **White Capps — FAIRLINE** а также выбрать подходящую вам яхту из нашего каталога яхт вам поможет опытный яхтенный брокер Андрей Шестаков. На сегодняшний день компания **Shestakov Yacht Sales Inc.** имеет большое количество яхт в собственном списке продаж, а также тесно сотрудничает со всеми крупными яхтенными производителями по всему миру.

Для того чтобы купить яхту **White Capps — FAIRLINE** а также проконсультироваться по любому вопросу связанному с покупкой, продажей, чартером яхт позвоните по телефону **+7(918)465-66-44**.

ОГЛАВЛЕНИЕ

ОГЛАВЛЕНИЕ	2
ХАРАКТЕРИСТИКИ	4
Основная информация	4
Размеры	4
Скорость, вместимость и масса	4
Размещение	4
Корпус и палуба	4
Информация о двигателе	5
ПОДРОБНОЕ ОПИСАНИЕ	6
Accommodations	6
Salon	6
Galley	6
Master Stateroom	7
Master Ensuite Head	7
Forward Guest Stateroom	7
Port Guest Stateroom	7
Helm Station	8
Electronics	8
Flybridge	8
Cockpit Aft	9
Laundry Room	9
Engine Room	9
Upgrades	10
Исключения	11
Отказ от ответственности	11
ФОТОГРАФИИ	12
КОНТАКТЫ	19
Контактная информация	19

Телефоны	19
Время работы	19
Адрес	19

ХАРАКТЕРИСТИКИ

Основная информация

Тип судна: Моторная яхта	Подкатегория: Flybridge
Модельный год: 2001	Год постройки: 2000
Страна: United States	Открытая палуба мостика: Да
Кубрик: Да	

Размеры

Длина общая: 62' 0" (18.90m)	Ширина: 16' 5" (5.00m)
Макс. осадка: 4' 6" (1.37m)	

Скорость, вместимость и масса

Крейс. скорость: 28 Kts. (32 MPH)	Макс. скорость: 33 Kts. (38 MPH)
Чистый вес: 62700 Pounds	Вместимость воды: 265 Gallons
Объем топливного бака: 991 Gallons	

Размещение

Всего кают: 3	Всего ком. состава: 3
---------------	-----------------------

Корпус и палуба

Материал корпуса: Fiberglass	Комплектация корпуса: Deep Vee
------------------------------	--------------------------------

Информация о двигателе

Двигатели: 2

Производитель: MAN

Модель: D2840 LE

Тип двигателя: Inboard

Тип топлива: Diesel

ПОДРОБНОЕ ОПИСАНИЕ

Accommodations

It is rare that a 10 year old engine room could be mistaken for new. The owner of White Caps takes pride in maintaining a Bristol vessel. The Fairline Squadron offers a more sleek and sea kindly 62' Euro style motoryacht. The custom hardtop matches the vessel's linens and makes for a great all weather bridge retaining the open and airy feeling. With her fresh power, great sea kindly ride, nice salon, great aft deck, expansive flybridge, pasarelle, and great swim platform, walk around decks and forward sun pad, White Capps has it all. She has been well loved by the current market aware seller and is seriously for sale. Make sure to compare White Capps to any Azimut, Princess, Neptunus, Ferretti, Viking, or Ferretti models and you will be glad you did!

"White Capps" galley is situated forward of the central helm position, the salon and dining area are remarkably spacious. The Master Stateroom is situated amidship with ensuite showers, a walk-in wardrobe and plenty of natural light.

Salon

- Stainless steel curved sliding cockpit door and opening windows
- Settees port and starboard
- Entertainment center with TV/VCR, Stereo radio/CD
- 110v Power points
- Curved bar unit with ice maker, sink
- Dining table and seating for seven
- Halogen ceiling lights

Galley

- Galley is forward
- Twin sinks with mixer tap
- Two-burner ceramic/halogen cooktop
- Combination microwave/conventional oven and grill
- Extractor fan
- Refrigerator/freezer
- Dishwasher
- Avonite worktop
- High and Low level storage cupboards
- Waste disposal bin
- 110v powerpoints

Master Stateroom

- King-size bed
- Twin bedside tables
- Full size wardrobe with shelves and hanging space
- Drawers under bed
- Bedside/overhead lights
- TV/VCR
- Stereo Radio/CD
- Twin portholes with flyscreens
- Full length mirror
- Dressing table

Master Ensuite Head

- Vanity with wash basin
- Seperate shower cubicle
- Twin portholes with flyscreens
- Halogen lights
- Complete bathroom fittings
- 110v Shaving point
- Extractor fan

Forward Guest Stateroom

- King-size bed
- Twin bedside tables
- Twin wardrobes with shelves/hanging space
- Dressing Area
- Drawers under bed
- Bedside/overhead lights
- Twin portholes
- Hatch to fordeck with fly/night screen

Port Guest Stateroom

- (2) Single beds
- Bedside reading/overhead lights
- Two portholes with flyscreens
- Wardrobe with shelves/hanging space
- Full length mirrored bulkhead
- Overhead cupboards

Helm Station

- Electrically adjustable helmsman's seat on center line with co-pilot seat
- Hydraulic power steering with adjustable wheel
- Electronic single lever throttle/gear controls
- Full engine instrumentation
- Madrona veneered instrument panel
- VHF R/T
- Autopilot
- GPS Chart plotter
- 48 mile radar
- Remote controls for forward anchor winch and searchlight
- Log and echosounder with water temperature readout
- High speed magnetic compass
- Bowthruster controls
- Trim tab controls
- Chart table with chart light
- Loud hailer to foredeck
- Direct access from helm to deck via side door operating warning lights and audible alarms
- Helm position indicator
- Chart storage

Electronics

- ICOM 602 VHF Radios with command mic at both helms
- Furuno Navnet Radar/Chartplotter at both helms
- Dual Radar antennas (1) 6KW (1) 12KW
- Dual PC System with Nobeltec for GPS Navigation
- Simrad AP20 Auto Pilot at lower helm
- Simrad AP 22 Auto Pilot at upper helm
- Simrad IS 15 Windgauge at lower helm
- Simrad IS 15 depth at lower helm
- Raytheon multi depth at both helms
- Flat panel display at both helms for Nobeltec and camera
- Weatherworx
- Trackvision G4 Sat dome for Direct TV

Flybridge

- Access by internal stairs from wheelhouse and by integral stairway from cockpit
- Large sunbathing area forward of helm position
- (3) Forward facing helm seats with semi-circular dining area aft

- Adjustable steering wheel and helm seat
- Flybridge bar complete with refrigerator/sink/bbq
- Electronic single lever throttle/gear controls
- Repeat engine instruments
- Repeat autopilot and GPS
- Remote controls for anchor winch and searchlight
- Repeat echosounder and log
- VHF R/T
- Bilge pump operating warning light
- Bowthruster controls
- Molded perspex screen
- Various stainless steel grab handles and rails
- Trim tab controls
- Intercom to lower helm
- Flybridge crane for tender

Cockpit Aft

- Teak flooring
- Access hatch to engine bay
- Access hatch with fender storage under
- Lockers port and starboard
- Twin stainless steel transom gates
- Concealed bathing ladder and large wet locker
- Cockpit lighting
- Manual bilge pump system
- Twin inlets for 240v shore power
- Transom shower
- Cockpit cushions
- Twin stern winches
- Stainless steel paserelle
- Cockpit cover

Laundry Room

- Washer/Dryer
- Storage lockers
- 110v Power points
- Main control panel for 240v/24v/12v circuits

Engine Room

- Access through cockpit
- Sound proofed
- Water-cooled engine silencers and side mount exhausts
- Automatic fire extinguisher system
- High corrosion resistant TEMET shafts
- Props
- (4) Automatic bilge pumps
- Emergency manual bilge pump
- Engine bay lights
- Lever seacocks on inlets/outlets
- Exhaust overheat warning system for both engines
- Emergency tiller
- Fresh water system
- Generator Onan 21.5 *Engines rebuilt Jan 2012

Upgrades

- Custom Hardtop designed and built by Palmer Johnson
- Custom Teak table at Aft deck
- Watermaker by Village Marine with custom washdown system
- Dripless shaft seals
- All raw water strainers upgraded
- Fresh water pump upgraded from 24v to 240 high pressure Headhunter
- A/C system upgraded from 5 ton to 7 ton chiller capacity
- (2) Additional high velocity air handlers added to A/C system
- All Teak decking replaced in 2008 with Teak Decking Systems full 5/8" wood
- Hot water heater replaced with dual Stainless Steel heater system
- Givens 8-person life raft
- Bezenzoni Crane upgraded to 1200lb capacity
- Bose 4-Zone Audio/Video system with surround sound
- Flat panel TVs
- Refrigerator at upper helm upgraded from 24v to 110v custom stainless steel
- Four Underwater lights by Ocean LED MDL 3010 Blue
- Bulwark accent LED lights in blue
- Radar Arch accents LED lights in blue **Engine work:**
- Fuel pumps rebuilt
- Turbos completely rebuilt
- Transmission oil coolers replaced **7/7/2011 work completed and upgrades:**
- New Bottom paint including props and conditioned and prop speed
- All teak decks repaired and sanded
- Teak tables refinished
- All new canvas/heavy isinglass
- Helm seat and cushions reupholstered

- New A/C chillers
- Complete engine service
- Complete generator service
- All VacuFlush toilets rebuilt
- New Galley Miele dishwasher
- New Samsung flat panel component in Salon
- Salon sofas reupholstered
- Besenzoni Crane rebuilt with new hydraulic pump, cylinder, solenoids, etc...

2014 work completed and upgrades:

- New HD7 KVH Track Vision
- New Ocean LED 3000 Mega Yacht series Underwater Lights
- New Samsung 36" Salon TV
- New Mele Dishwasher
- New Icemaker
- New Headliners throughout

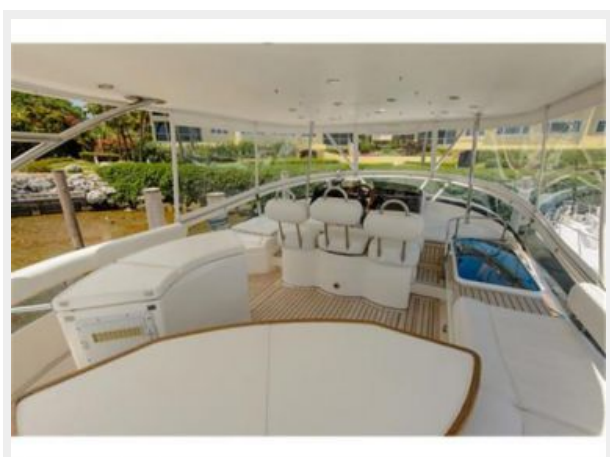
Исключения

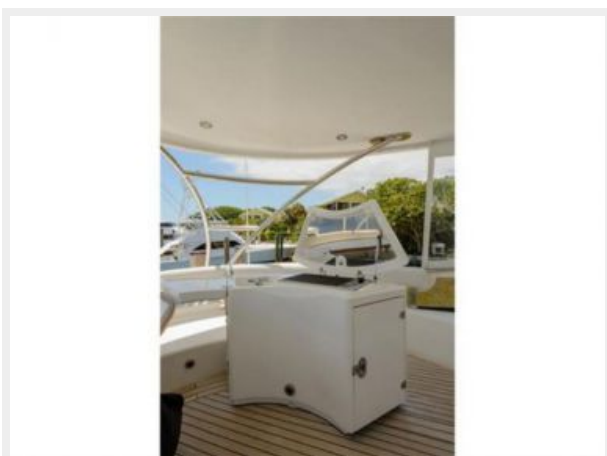
При продаже яхты исключаются личные вещи владельца.

Отказ от ответственности

Компания предоставляет описание судна или яхты добросовестно, но не может гарантировать точность этой информации, а также не ручается за техническое состояние. Покупатель должен проинструктировать своих агентов или оценщиков исследовать представленную информацию более подробно, по собственному желанию. Продажа судна или яхты, изменение цены или снятие с продажи будет происходить без предварительного уведомления.

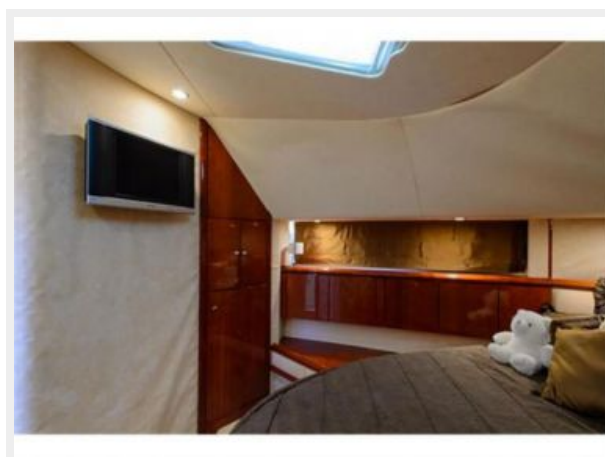
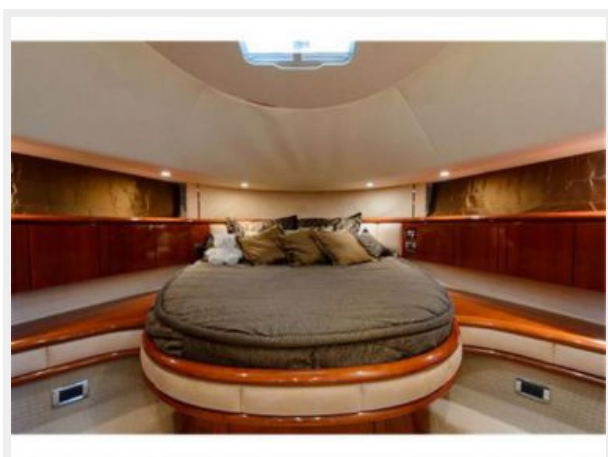
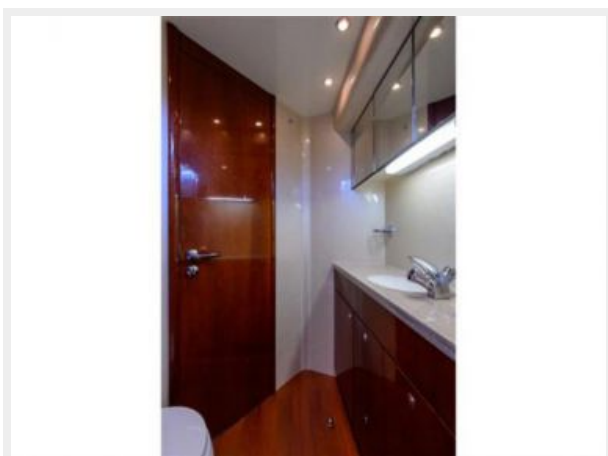
ФОТОГРАФИИ

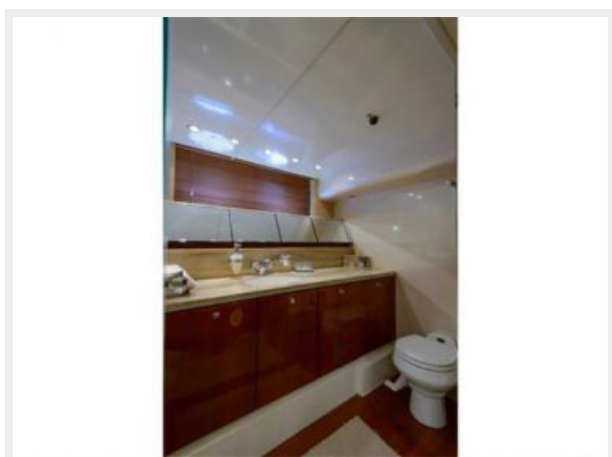
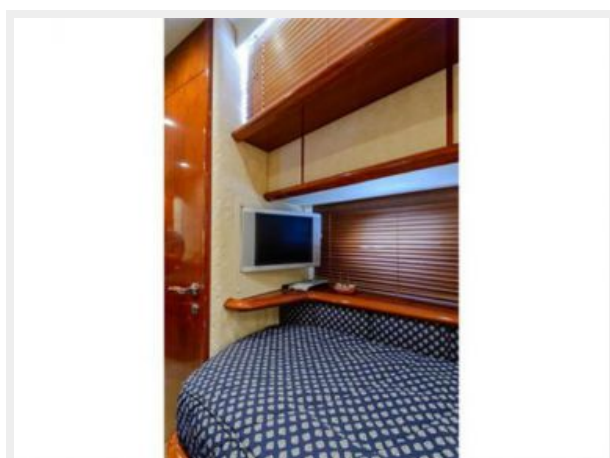
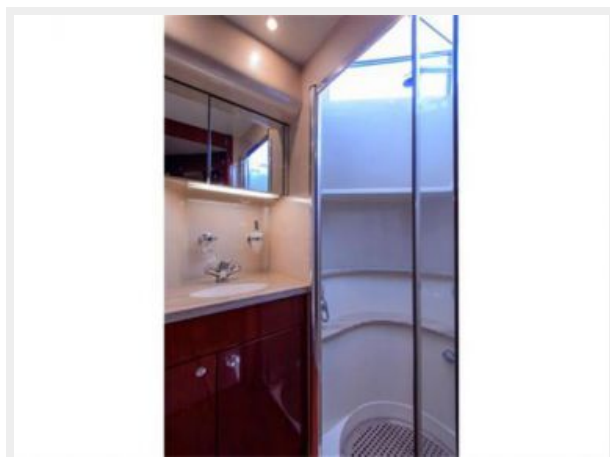














КОНТАКТЫ

Андрей Шестаков (Andrey Shestakov) – ведущий яхтенный брокер отдела продаж яхт и судов компании Shestakov Yacht Sales Inc. Официальный представитель Shestakov Yacht Sales Inc. для русскоговорящих клиентов в центральном офисе компании в Майами/Форт Лодердейл/Флорида/США.

Контактная информация

Email: andrey@shestakovyachtsales.com

Web: shestakovyachtsales.com

Телефоны

Краснодарский край: **+7(918)465-66-44**

США, Майами, Флорида: **+1(954)274-4435**

Время работы

Понедельник – Суббота: **9:00 - 21:00**
EDT

Воскресенье: **Закрето**

Адрес



Harbour Towne Marina, 850 NE 3rd St,
STE 213, Dania, FL 33004