

## THUNDERBALL — SEA RAY



**Builder:** SEA RAY

**LOA:** 42' 0" (12.80m)

**Year Built:** 1997

**Beam:** 14' 3" (4.34m)

**Model:** Motor Yacht

**Price:** PRICE ON APPLICATION

**Location:** United States

Our experienced yacht broker, Andrey Shestakov, will help you choose and buy a yacht that best suits your needs **Thunderball — SEA RAY** from our catalogue. Presently, at Shestakov Yacht Sales Inc., we have a wide variety of yachts available on our sale's list. We also work in close contact with all the big yacht manufacturers from all over the world.

If you would like to buy a yacht **Thunderball — SEA RAY** or would like help answering any questions concerning purchasing, selling or chartering a yacht, please call **+1(954)274-4435**

# TABLE OF CONTENTS

TABLE OF CONTENTS	2
SPECIFICATIONS	4
Overview	4
Basic Information	4
Dimensions	4
Speed, Capacities and Weight	4
Accommodations	4
Hull and Deck Information	4
Engine Information	5
DETAILED INFORMATION	6
Accommodations	6
Galley	6
Electronics	6
Electrical Equipment	6
Deck & Exterior	6
Disclaimer	6
Exclusions	6
Disclaimer	7
PHOTOS	8
Exterior	8
Exterior	8
Aft Deck	8
Aft Deck	8
Aft Deck	8
Cabin	8
Cabin	9
Cabin	9
Cabin	9

---

Galley	9
Galley	9
Forward Stateroom	9
Aft Stateroom	10
Aft Stateroom	10
Aft Stateroom Head	10
CONTACTS	11
Contact details	11
Telephones	11
Office hours	11
Address	11

---

# SPECIFICATIONS

## Overview

This 1997 Sea Ray 420 Aft Cabin is a very functional and accommodating aft cabin, both inside and out. Fit with CAT diesels and having been well cared for, this Sea Ray 420 is the aft cabin to buy!

## Basic Information

Category: Motor Yacht	Model Year: 1997
Year Built: 1997	Country: United States
Vessel Top: Bimini Top	

## Dimensions

LOA: 42' 0" (12.80m)	Beam: 14' 3" (4.34m)
MFG Length: 45' 5" (13.84m)	

## Speed, Capacities and Weight

Displacement: 27000 Pounds	Water Capacity: 120 Gallons
Holding Tank: 55 Gallons	Fuel Capacity: 350 Gallons

## Accommodations

Total Cabins: 2	Total Heads: 2
-----------------	----------------

## Hull and Deck Information

Hull Material: Fiberglass

## Engine Information

---

**Engines:** 2

**Manufacturer:** Caterpillar

**Model:** 3116TA

**Engine Type:** Inboard

**Fuel Type:** Diesel

---

## DETAILED INFORMATION

---

### Accommodations

---

CruisAir air conditioning/heat Splendid Combo-Matic 200 washer/dryer Vacuflush heads

### Galley

---

Refrigerator/freezer GE Microwave oven (3) burner Kenyon electric stove Built-in Black&Decker coffee maker

### Electronics

---

Raytheon R40XX Radar with 601XX Chartplotter Raytheon NAV398 GPS Raytheon RayPilot650 Autopilot Raytheon Ray210 VHF Radio with remote speaker RayData Depth/Log/Temp

### Electrical Equipment

---

Westerbeke 8kw generator

### Deck & Exterior

---

Bimini top with full enclosure curtains Aft deck hardtop with wing doors and full enclosure curtains Flybridge and aft deck carpeting Aft deck wetbar with U-Line ice maker Lofrans windlass Swim platform with ladder Foredeck fender racks

### Disclaimer

---

The Company offers the details of this vessel in good faith but cannot guarantee or warrant the accuracy of this information nor warrant the condition of the vessel. A buyer should instruct his agents, or his surveyors, to investigate such details as the buyer desires validated. This vessel is offered subject to prior sale, price change, or withdrawal without notice.

### Exclusions

---

Owner's personal belongings.

---

## Disclaimer

---

The Company offers the details of this vessel or yacht in good faith but cannot guarantee or warrant the accuracy of this information nor warrant the condition of the vessel. A buyer should instruct his representatives, agents, or his surveyors, to investigate such details as the buyer desires validated. This vessel or yacht is offered subject to prior sale, price change, or withdrawal without notice.

# PHOTOS

**Exterior**



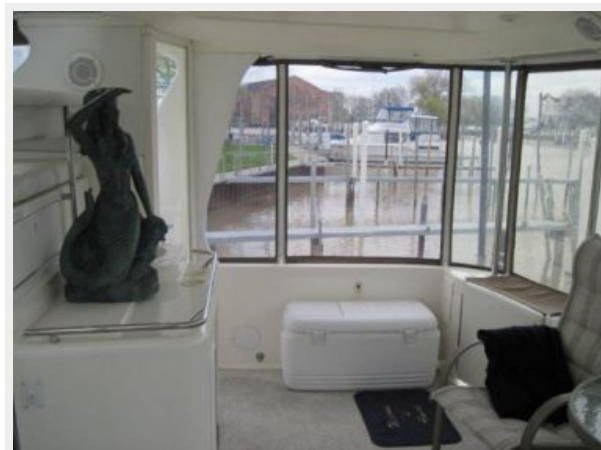
**Exterior**



**Aft Deck**



**Aft Deck**



**Aft Deck**



**Cabin**





**Cabin**



**Cabin**



**Cabin**



**Galley**



**Galley**



**Forward Stateroom**



**Aft Stateroom**



**Aft Stateroom**



**Aft Stateroom Head**



# CONTACTS

---

Andrey Shestakov, leading yacht broker of the sales department of Shestakov Yacht Sales Inc. Shestakov Yacht Sales Inc., the official representative of the Miami/Fort Lauderdale FL headquarters.

## Contact details

---

Email: **andrey@shestakovyachtsales.com**

Web: [shestakovyachtsales.com/en/](http://shestakovyachtsales.com/en/)

## Telephones

---

USA: **+1(954)274-4435**

## Office hours

---

Monday – Saturday: **9:00 - 21:00 EDT**

Sunday: **closed**

## Address

---



Harbour Towne Marina, 850 NE 3rd St,  
STE 213, Dania, FL 33004