

I LORRAINE — PACIFIC MARINER



Судостроитель: PACIFIC MARINER

Год постройки: 2009

Модель: Моторная яхта

Цена: ЦЕНА ЯХТЫ ПО ЗАПРОСУ

Местонахождение: United States

Длина общая: 85' 0" (25.91m)

Ширина: 21' 3" (6.48m)

Мин. осадка: 5' 3" (1.60m)

Макс. осадка: 5' 8" (1.73m)

Крейс. скорость: 22 Kts. (25 MPH)

Макс. скорость: 25 Kts. (29 MPH)

Купить I Lorraine — PACIFIC MARINER а также выбрать подходящую вам яхту из нашего каталога яхт вам поможет опытный яхтенный брокер Андрей Шестаков. На сегодняшний день компания Shestakov Yacht Sales Inc. имеет большое количество яхт в собственном списке продаж, а также тесно сотрудничает со всеми крупными яхтенными производителями по всему миру.

Для того чтобы купить яхту I Lorraine — PACIFIC MARINER а также проконсультироваться по любому вопросу связанному с покупкой, продажей, чартером яхт позвоните по телефону **+7(918)465-66-44**.

ОГЛАВЛЕНИЕ

ОГЛАВЛЕНИЕ	2
ХАРАКТЕРИСТИКИ	4
Обзор	4
Основная информация	4
Размеры	4
Скорость, вместимость и масса	5
Размещение	5
Корпус и палуба	5
Информация о двигателе	5
ПОДРОБНОЕ ОПИСАНИЕ	6
Salon	6
Galley	7
Master Stateroom	7
Master Ensuite	8
Master Foyer	9
VIP Stateroom	9
Guest Ensuite - Port side	10
VIP Ensuite	10
Guest Stateroom - Port side	11
Guest Stateroom - Starboard side	12
Guest Ensuite - Starboard side	13
Day Head	13
Captains/ Crew Quarters	13
Captains/ Crew Quarters ensuite	14
Pilothouse	14
Fly Bridge - boat deck	15
Fore Deck	16
Aft Deck	17

Swim Step	18
Navigation Equipment	18
Under the Water	19
Engine Room	19
Generator	20
Below Deck	20
Electronics	20
Electrical Equipment	20
Communications	22
Miscellaneous Equipment	22
Safety Equipment	23
Vessel Alarms and Monitoring	23
Main Engine Readings	24
Исключения	24
Отказ от ответственности	24
ФОТОГРАФИИ	25
КОНТАКТЫ	36
Контактная информация	36
Телефоны	36
Время работы	36
Адрес	36

ХАРАКТЕРИСТИКИ

Обзор

Hull 16 of the Pacific Mariner 85 pilot house yacht was introduced at the Fort Lauderdale International Boat Show in October 2009. The Pacific Mariner 85 series was designed for optimum quality, comfort, style and value in a proven platform. The spacious, well-appointed four stateroom arrangement (with amid-ship master) coupled with industry leading quiet acoustics ensure a relaxing time aboard surrounded by exceptional details in wood, stone, and elegant fabrics. The profile and exterior styling elements that define the composite 85 are rounded contours, larger port lights to illuminate the master stateroom, and, topside, flybridge-deck overhangs that allow an expanded boat deck. Equally noteworthy is the William Garden-designed hull because its slippery, balanced underbody delivers an uncannily smooth, quiet ride and corners as if on rails. The 85's interior arrangement has three guest suites forward on the lower deck plus a full-beam master with private access just aft. The taller deckhouse profile has allowed an increase in headroom at the pilot house, and the addition of an overhead cabinet above the peninsula counter in the adjacent galley. The main-deck salon features separate sitting, bar, and dining areas. Quarters aft of the engine room accommodate a crew of one or two, or in the case of an owner-operated boat, additional guests. The exterior is a broad top deck area, which extends outboard on either side to the point of allowing athwartship storage of a tender up to about 16' in length, a configuration that opens up a larger portion of the boat deck for sun pads or lounge furniture in addition to a sizeable storage cabinet and a service bar with grill and open-air dining settee beneath a composite hardtop.

Основная информация

Тип судна: Моторная яхта

Модельный год: 2009

Год постройки: 2009

Страна: United States

Размеры

Длина общая: 85' 0" (25.91m)

Длина по ватерлинии: 76' 5" (23.29m)

Ширина: 21' 3" (6.48m)

Мин. осадка: 5' 3" (1.60m)

Макс. осадка: 5' 8" (1.73m)

Трапы: 25' 5" (7.75m)

Скорость, вместимость и масса

Крейс. скорость: 22 Kts. (25 MPH)

Макс. скорость: 25 Kts. (29 MPH)

Водоизмещение: 125000 Pounds

Вместимость воды: 425 Gallons

Вместимость сточного бака: 210 Gallons **Объем топливного бака:** 2325 Gallons

Размещение

Всего кают: 4

Всего ком. состава: 4

Корпус и палуба

Материал корпуса: Fiberglass

Информация о двигателе

Двигатели: 2

Производитель: MTU

Модель: 10V2000 CRM 93-Series

Тип двигателя: Inboard

Тип топлива: Diesel

ПОДРОБНОЕ ОПИСАНИЕ

Salon

Raised buffet starboard side with television cabinet, wood veneer counter tops with sea-rail molding

Upgraded Apple TV with Russound System and with RTI Remote, 2012

Russound distributed audio system

Russound touch screen control panel

New Carpeting throughout, 2013

New Custom Chair and Sofa with storage, 2013

Recessed Mahogany soffit with LED down lighting and rope lights and New Accent Lighting with dimmer, 2013

New Coffee Table, 2013

Custom Pig Skin Dining Room Table with New Chairs, 2013

Channel Glass Artwork

Upgraded Crystal and Stemware Cabinets, 2012

Upgraded Interior Cabinets and Storage

Majilite headliner

Silhouette blinds in custom blind pocket

Vertiglide blinds on Aft Saloon Door

Large 2-panel polished stainless steel sliding door, weather tight, and direct bonded glass

Bar includes a Mahogany veneer cabinet, with granite stone counter, stainless sink, sub zero Refrigerator Drawers with Scottsman Ice Maker, and wine cooler. Mirror polished stainless steel sink and chrome faucet

50" Plasma TV with remote controlled life

Satellite Receiver

Blue Ray DVD Player

Multi-function RF Remote Control

Kaleidescape Cinema One System

XM Radio

AM/FM Receiver

Galley

Upgrades Granite Counter tops, 2013

Air Induction Stove, 2012

Meile Dishwasher, 2012

Kitchen Aid Refrigerator, 2012

New Trash Compactor, 2012

New Upgraded Flooring, 2012

Master Stateroom

King Berth with four Built-in Drawers and new Headboard and New Bedding and Comforters, 2013

Curved Mahogany Soffit

Recessed LED Room Lights with Dimmer

Two Reading Lights

Indirect LED Rope Accent Lighting under Berth and above Soffits

4 Port Lights with Screens

Veneer Counters with Satin Finish

2 Wardrobes, lined with Aromatic Cedar, automatic Light and Closet Rod

Hunter Douglas Electric Applause blinds with blackout fabric

Soffit with Trim for Lighting and hidden Air Conditioning

Crown Molding

Base Molding

Desk with Bookshelf above

Makeup Mirror in Port Dresser

2 Nightstands with Drawers

2 Dressers

2 Chairs

32" LCD TV

Blue Ray Player

Satellite Receiver

2 Speakers in Stateroom

2 Speakers in EnSuite

Added Storage under Steps for Washing Machine and Dryer

New Wall Coverings, 2013

Safe in Starboard Side Closet

Refrigerator in Port Side Cabinet

New Stairway Wall Paper, 2013

Added Additional Handrail leading to Master Stateroom, 2012

Master Ensuite

Headhunter Royal Flush toilet

Shower: Stone tile wall, fiberglass pan, stainless grab handle, Altman fixtures. Euro-style frameless tempered glass door

2 Payson sinks with Altman fixtures, chrome and gold finish.

Mirrored medicine cabinet

Headliner crown molding and Majilite trim

Stone counters with edge detail

Vanity

Crown molding

Linen locker

Soffits

2 Portlight with screens

Recessed LED room lights and vanity lights

Stone tile flooring

Altman accessories, chrome and gold finish, toilet tissue

Master Foyer

Majilite overhead

Full size stacks washer/dryer

Storage cabinet above

LED overhead lighting and rope lighting on stairs

VIP Stateroom

Apple TV with Russound Sound System and RTI Remote

Custom Storage with Lift System under Beds

Custom Electric Blinds

Queen berth with four built-in drawers and Mahogany headboard

Recessed LED room and reading lights

Indirect rope accent lighting under berth

Wardrobe lined with aromatic cedar, automatic light, closet rod and cedar shelf

Counters - Mahogany veneer with satin finish

Over berth, 24" square hatch with sliding privacy cover and bug screen

2 Portlights with screens

Shelves outboard of berth

A/V cabinet

Base molding

Book case to starboard

22" LCD TV

Satellite Receiver

DVD Player

1 Pair of speakers

Russound control panel

Guest Ensuite - Port side

Headhunter Royal Flush toilet

Molded fiberglass shower with stainless grab handles, Altman fixtures and tempered glass door.
The shower includes a sealed light

Payson sink with Altman fixtures, chrome and gold finish

Recessed LED room lights

Stone counters with full bullnose edge

Vanity

Crown molding

Medicine cabinet

Portlight with screen

Altman accessories, chrome and gold finish, (1) each: toilet tissue holder, towel bar, towel ring, robe hook

Stone tile flooring

VIP Ensuite

Headhunter Royal Flush toilet

Shower: Molded fiberglass with built in seat, stainless grab handle, tempered glass sliding door, Altman fixtures

Sealed shower light

Payson sink with Altman fixtures, chrome and gold finish

Altman accessories, chrome and gold finish, (1) each: toilet tissue holder, towel bar, towel ring, and robe hook

Recessed LED lighting

Tile flooring

Stone counters with edge detail

Mirrored doors on medicine cabinet

Vanity

Crown molding

Guest Stateroom - Port side

Twin berths, with nightstand between them

The pedestals have two drawers built-in

Recessed LED room lights

2 LED reading lights

Indirect rope accent lighting under berth and above soffits

Wardrobe lined with aromatic cedar, automatic light, and closet rod

Wood veneer counters with satin finish

Hunter Douglas Applause blinds

Portlight with screens

Soffit with trim for lighting

Crown molding

Base molding

2 Nightstands with drawers

Curved corner cabinet with storage shelf

A/V cabinet

22" LCD TV

Satellite receiver

DVD player

1 Pair of speakers

Russound control panel

Guest Stateroom - Starboard side

Queen berth with four drawers built-in

Recessed LED room lights

2 Reading lights

Indirect rope accent lighting under berth and above soffits

2 Nightstands with drawers

Curved corner cabinet with storage shelf and TV

Wardrobe, aromatic cedar-lined, with automatic light and closet rod, door to luggage stowage compartment

Wood Veneer counters

Hunter Douglas Applause blinds

Portlights with screens

22" LCD TV

Satellite receiver

DVD player

1 Pair of speakers

Russound control panel

Guest Ensuite - Starboard side

Headhunter Royal Flush toilet

The shower is molded fiberglass with stainless grab handle, Altman fixtures with tempered glass door. The shower includes a sealed light

Payson sink with Altman fixtures, chrome and gold finish

Altman accessories, chrome and gold finish, (1) each: towel bar, towel ring, robe hook

Medicine cabinet has mirrored door

Recessed LED room lights

Stone tile flooring

Stone counters with edge detail

Vanity

Crown molding

Day Head

Headhunter Royal Flush toilet

Vanity with stone top, Payson under mount sink, Altman faucet with chrome and gold finish

Accessories include towel ring, toilet tissue holder

Mirror on forward bulkhead

Stone tile flooring

Captains/ Crew Quarters

New Miele Washing Machine and Dryer

Full-size modified queen berth with storage underneath

24VDC recessed room and reading lights

Hunter Douglas blinds

Solid surface counters with edge detail

Aft cabinet with hanging locker, storage locker

22" LCD TV

Satellite receiver

DVD player

1 Pair of speakers

Russound control panel

Captains/ Crew Quarters ensuite

Headhunter Royal Flush toilet

Custom-molded fiberglass, stainless steel grab handle, tempered glass door shower

Sealed shower light

LED recessed room lights

Solid surface counters with edge detail

Stainless steel sink with Altman's fixture

Mirror on medicine cabinet

Amico commercial vinyl flooring in a hardwood pattern

Accessories, chrome finish. One each: toilet tissue holder, towel bar, towel ring, robe hook

Pilothouse

Wood 36" Destroyer type helm station wheel

MTU Engine Instrumentation

MTU Smart Line Engine Controls

Stain-resistant carpeting

Veneer bulkheads

Helm Chair - Stidd 500-XL Low Back which matches settee

Port and Starboard, watertight pilothouse doors

Windshield Mesh Sun Screen Cover

Hepworth windshield wipers, self-parking, washers for three wipers

Majilite headliner

Majilite Control Console

Chart Drawers Adjacent to Console

Settee with Table Veneer Top and Marching Edge with Satin Finish

Sliding Hatch to Flybridge

HVAC with diffusers in dash face and pilothouse overhead

Domestic 220 VAC defroster in pilothouse console

AIS/FA 150 Identifier, 2013

Nortec Software with Marine PC

New Cushions, 2013

Added Pantry Cabinet, 2012

Added Storage under seating

New Canvas, 2012

Fly Bridge - boat deck

15" Monitor for Cameras

New Cushions throughout, 2014

Removed Hot Tub and Added Deep Freezer

Sub Zero Refrigerator Drawer with Scottsman Ice Maker

Changed Thru Hulls Discharge Fittings to Faired Clamshells

Custom Painted Hull to Thomas Green

MAST: Welded aluminum and composite with antennas, anchor light and search light

HELM STATION: With engine, bow thruster, stabilizer controls, engine instrumentation and electronics

WINDSHIELD: Custom stainless framed tempered glass

WHEEL: 24" stainless steel, Destroyer type

HELM SEATS: 3 Stidd 500-XL Low Back helm chairs with footrests

SETTEE: Molded settee with cushions and storage below

TABLE: Fixed with solid surface and polished stainless post

HARD TOP: Composite construction covering Flybridge Deck has 24VDC LED overhead deck lighting, boat deck flood lights, horns, antennas, radar, mast flood lights and stereo speakers

WET BAR: Molded fiberglass cabinet with, solid surface counter with sink, icemaker, refrigerator, electric BBQ grill

CUSTOM FREEZER: Extremely Large Capacity

Sun pad aft of bar port side.

DAVIT: Hydraulic powered Nautical Structures (or equal) crane features 350 degrees of rotation, and 1700 lb. load capacity

CHOCKS: Removable, for tender

RAILS: Stainless rails with mid rail around boat deck

AIR HORN: Kahlenberg dual trumpet

2 Pairs of speakers

Russound control panel

FLAGSTAFF: Stern flagstaff with Flag

Sub Zero Refrigerator Drawers

Scottsman Icemaker

Kenyon electric grill

Fore Deck

BOW SUN LOUNGE: With cushions and cover. Includes escape hatch from VIP stateroom.

CHAIN LOCKER: With fender storage area with line hooks, salt water wash downs for anchors

Fresh and salt water wash downs in bulwarks

MAIN DECK (EXTERIOR): Aft Deck, Swim step, steps to Aft Deck from Swim step, and steps from Aft Deck to Boat Deck are teak over composite; all other exterior decks are non-skid over composite

EXTERIOR DECK SETTEES: Molded fiberglass with cushions and covers

Flybridge Settee to starboard

THRU-HULLS: All thru-hull fittings below waterline are bronze with bronze valves and bonding

BULWARKS: Fiberglass

PORTLIGHTS: Watertight elongated oval shaped with screens

UNDERWATER LIGHTS: 4 across stern

STAINLESS RAILS: Transom stairs port and starboard, stern, across aft deck settee, flybridge, bow, and boat deck sides, boat deck aft. All railings are 1 ½" mirror-polished stainless except swim step which are 2". Boat deck and swim step rails have mid-rails

RUBRAIL: Bolt on rigid vinyl with 316 stainless half oval rub strip

WINDOWS: Frameless, bonded with UV resistant urethane, 3/8" Gray laminated glass. Forward and side pilothouse windows are 1/2" clear

HATCHES:

- 1 Opening hatch for forward guest stateroom
- 1 Sliding hatch to flybridge
- 1 Fiberglass bow deck hatch to chain locker
- 1 Fiberglass hatch from aft deck to flybridge
- 1 Escape hatch from engine room to aft deck
- 2 Opening hatches on flybridge hardtop
- 1 Teak clad fiberglass opening hatch on swim step to fender storage
- 1 Water tight fore peak hatch
- 2 Hatches from crew area to Lazarette

Aft Deck

New Wet Bar in 2012 features built-in fiberglass cabinet with sub zero drawer refrigerator, ice

maker, solid surface top, sink, and storage locker

Furnished with molded-in settee with cushions, gloss finish teak veneer dining table on stainless pedestals, and three arm chairs

Aft deck swim step and bustle stairs are covered with teak

Spiral staircase molded fiberglass with teak stair treads and stainless handrails to flybridge

Boarding gates, built-in port and starboard, with brackets for ladder

Three Wing Stations, port and starboard forward and aft starboard, include engine controls/stops and starts and bow thruster controls

22" LCD TV

Satellite Receiver

Upgraded Russound System with one pair of speakers

Cockpit Sun Shade

New Exterior Cushions, 2014

Upgrade to Green Lighting, 2012

Swim Step

Hot and cold shower in port side near the swim step

Navigation Equipment

NAVIGATION SYSTEM: Ships computer with MaxSea TZ (Time Zero Explorer), SM Weather Software, Furuno Navnet 3D black box chart plotter, radar and color sounder, Three 19" LCD monitors at lower helm. Three Furuno Navnet 3D MFD12 monitors on flybridge.

CHARTPLOTTER: MaxSea TX Explorer interfaced with autopilot, Navnet 3D plotter with C Map charts, and radar overlay displays at any Navnet monitor, interfaced with autopilot

RADAR: Furuno black box Navnet MFDBB digital HD 72nm radar with dual range display and ARPA

GPS: Furuno GP33 with display and Navnet black box (BBWGPS)

DIGITAL INSTRUMENTS: Furuno RD30 system displays wind speed/direction, depth and vessel speed on instruments in the pilothouse, flybridge, crew and master stateroom, Sensors

include PB150 solid state weather sensor with GPS, Fluxgate Compass, and Smart depth/speed transducer

COMPASS: Ritchie Globe Master FB500 on pilothouse and flybridge

DEPTH SOUNDER: Furuno Nqavnet DFF1 digital color sounder display on Navnet system

AUTOPILOT SYSTEM: Simrad AP28 in pilothouse and AP24 on flybridge

Under the Water

Upgrade Naiad Hydraulic Bow Thruster System, 2012

Full Bottom Job, 2013

Engine Room

Custom Hardware Containers

Upgraded Naiad Dynamics, 2011

Removed Aft Holding Tank

Replumbed Invertor and replaced with UPS System

MAIN ENGINES: 2 MTU Common Rail 10V2000 M93-Series engines, rated at 1,500 hp each. Smartline electronic controls and displays, trolling valves, and underwater exhaust

BOW THRUSTER: Naiad 38hp hydraulic with five station controls

RUDDERS: Cast bronze high speed wedge shape rudders with 3 1/2" stainless stocks

RUDDER BEARINGS/SEALS: Tide Marine bearings and seals

ZINC ANODES: Installed on hull at transom and secured on silicone bronze studs and tied to the bonding system

PROPELLERS: 36"x 35.5" Nibral 5-blade custom wheels

PROPELLER SHAFTS: 3" Aquamet 22-H.S.

SHAFT LOG AND SEALS: Shaft logs are bronze fittings, fitted with Tides Marine seals with spare seals installed on shafts. Cross flow lubrication is provided

STRUTS: I-design, cast bronze with rubber cutlass bearings

STEERING: Teleflex SeaStar hydraulic power steering with engine-driven pump and two

steering stations

BONDING: All bronze thru-hulls and underwater gear are bonded with #8 wire and connected to transom zincs

Stabilizers Naiad #369 with 9 sq. ft. fins with Stabilization at anchor

1 Datum Digital Adaptive Stabilizer control on flybridge and 1 Pilot House LCD control panel with fin position icons, sensitivity controls, and individual function screens with context sensitive push buttons

Generator

Northern Lights 30 kw Generators:

Port Side Hours: 789

Starboard Hours: 991

Below Deck

Added Shelves for Spares Containers

Automatic Lighting Switches in all Bilge Areas

New Shore Power Cords, 2013

Electronics

Ghost System

VSat Intellian V100 GX, 2013

High Speed Modem, 2013

iPad Software, 2013

iPod Docks, 2013

6 Green Underwater Lights, 2011

Electrical Equipment

GENERATORS: Twin 30kW, 1800 rpm Northern Lights with double compound mounts, sound

shields, lift and water separating mufflers. Instrumentation includes water temperature, oil pressure and hour meters installed on main distribution panel in crew quarters. Both generators have remote start/stop in Pilothouse

PTO and hydraulic pump installed on Port and Starboard generator for bow thruster

ENGINE STARTBANK: (2) 8D AGM wired in series for 24V

HOUSE DC SYSTEM BANK: (4) 8D AGM wired in series / parallel 24V

GEN START BANK: (2) Group 31 AGM wired in series for 24V

BATTERY CHARGERS: (1) 95 amp 24VDC for ship's service bank. (1) 60 amp 24VDC for engine start batteries, and (1) 20-amp 24VDC for generator batteries

MAIN DISTRIBUTION PANEL: Located in crew area. Functional split buss design, with convenient and flexible AC source selection, and power management. Includes analog volt and amperage gauges

DISTRIBUTION PANELS: Panels have engraved face plates

SHORE POWER: (2) 100 Amp –multi-voltage, 1ph/3ph shore feeds. (2) Glendenning Cablemaster cord reels at the bustles with 75' cords

SHORE POWER CONVERTERS: (2) 24 KVA Asea 50/60 cycle

12 VOLT SYSTEM: 24V TO 12V DC-DC converters provides power to 12VDC equipment including VHF radios, satellite television antenna system and power socket. Includes converter and distribution panel with volt amperage gauges

INVERTER POWER: 120V AC power for ships PC and monitors provided by 24V DC–120, AC inverter

INDIRECT LIGHTING: 24VDC LED rope lighting

RECESSED LIGHT FIXTURES: LED with stainless steel fixtures

EXTERIOR LIGHTING: The side decks and stair courtesy light are LED's. Overhead lighting on Flybridge and Aft deck are LED. There are (2) flood lights for the boat deck and (2) spot lights for mast illumination on the hard top

SEARCHLIGHT: (1) ACR Halogen located on mast with dual control

PILOTHOUSE CHART LIGHTS: (1) 24VDC red chart light. (2) Overhead red lights with dash mount switch

SHOWER LIGHTS: 24VDC LED in sealed stainless fixture

LIGHTNING PROTECTION: CuNi hull ground plate and lightning rod

READING LIGHTS: All staterooms have 24V LED reading lights and 110V receptacles for table

Communications

SHIP TO SHIP/SHORE

RADIOS: VHF – ICOM® M604 VHF radio in pilothouse and on flybridge and one command mic in crew quarters (OFF PH RADIO)

LOUD HAILER: integrated with pilothouse and FB VHF radios via switch in pilothouse

SATELLITE COMMUNICATIONS (SATCOM) COMPONENTS

INTERNET: Internet connectivity thru Syrens Wi-Fi receiver/router. FB250 data

WEATHER INFORMATION: XM Satellite. Weather running on ships computer. (Subscription required)

TELEPHONE SYSTEM: 8-station digital phone system. All stations have speaker phones for intercom and paging. Phone system is connected to Satellite, Cell and Shore Phones for voice lines throughout. Port and Starboard shore connection is provided aft with a 50 ft. combo Telephone / CATV shore cord

SATELLITE TELEPHONE: KVH® FB250 Fleet Broadband (Subscription required)

CELLULAR PHONE: Telular GSM cellular phone SX7G system. Antenna on mast

CAMERA SYSTEM: Elbex 12VDC hi-resolution color, pan/tilt/zoom cameras (2 total): (1) camera on the exterior on the aft deck overhead, and (1) camera in the engine room

Miscellaneous Equipment

BOARDING STAIR: 1, 6-step aluminum brackets at port and starboard gates, stowed in engine room

BOAT HOOK

COVERS: Sunbrella Stamoid® Snap-On covers for flybridge bar, settee, bar stools, helm chairs, ground tackle instrument console, bow cushion and aft deck seating. A mesh windshield cover is provided in the pilothouse

CUSHIONS: Aft deck settee, bow area, flybridge settee and sun pad. Sunbrella® fabric cushions with dry-fast foam fill

SWIM LADDER: 4-step swim ladder

FLAGSTAFFS: Stern flagstaff and bow jack staff. Courtesy flag halyards on mast

WHEEL PULLER: Provided to pull vessel's propellers

Safety Equipment

LIFE RAFT: Zodiac, Commercial Grade, Offshore, 10-Man life raft. Inspection current thru 05/15

TENDER: Nautica 15' Yacht Series tender

RING BUOY: 24" diameter ring buoy secured on exterior of vessel

BELL: Ship's bell per Coast Guard regulations, stored in crew quarters

EPIRB-Emergency Position Indicator

FIRE EXTINGUISHER: Dry chemical type to be installed in suitable locations: (3) -10 lb., (6) -5 lb.

FLARES: Flare kit included

Vessel Alarms and Monitoring

6" LCD color displays installed in pilothouse (2), crew quarters, flybridge, and master stateroom. Audible and visual alarms. Strobe light in engine room; includes display on multi-function PC monitor in PH dash

(5) High water switches monitored for water detection. (6) Bilge pumps monitored for operation. Water tank monitored and alarmed for low level

Holding tank monitored and alarmed for high level

Smoke detectors in Master, VIP, port, starboard staterooms, pilothouse/galley, engine room and crew quarters

Security system: Aft Transom door, salon door, port and starboard pilothouse doors, aft deck hatch, and flybridge hatch are monitored for unauthorized entry

Condition of AC supply from all available sources with Volts and Amps monitored for each generator, shore power source and inverter

Tank levels monitored; (3) fuel tanks, (1) fresh water tank and (1) holding tank

CO alarms in crew quarters, engine room, and master stateroom

ENGINE ROOM VENTILATION: Delta-T demisters to remove moisture from air. 220 VAC fans, 2

exhaust with dampers, (2)18,000 BTU Slim Line AC units

FIRE SUPPRESSION: Engine Room has a Fireboy® GA-series fire suppression system with manual/automatic controls

ENGINE ROOM FLOOR: Removable floorboards with vinyl floor covering

ENGINE ROOM LIGHTS: 24VDC fluorescent

WORK BENCH: Work bench with vise

DOOR: Watertight door with viewing port

HATCH: Access to aft deck

Main Engine Readings

RPM/1200	SPEED/11.6 kts.	LOAD/42%	FUEL BURN/26 gal.
RPM/1600	SPEED/15 kts.	LOAD/60%	FUEL BURN/54 gal.
RPM/1800	SPEED/18.3 kts.	LOAD/68%	FUEL BURN/86 gal.
RPM/1900	SPEED/19.1 kts.	LOAD 73%	FUEL BURN/92 gal.
RPM/2000	SPEED/21 kts.	LOAD/75%	FUEL BURN/103 gal.
RPM/Full 2496	SPEED/ 24.5 kts.	LOAD/100%	FUEL BURN/150 gal.

Исключения

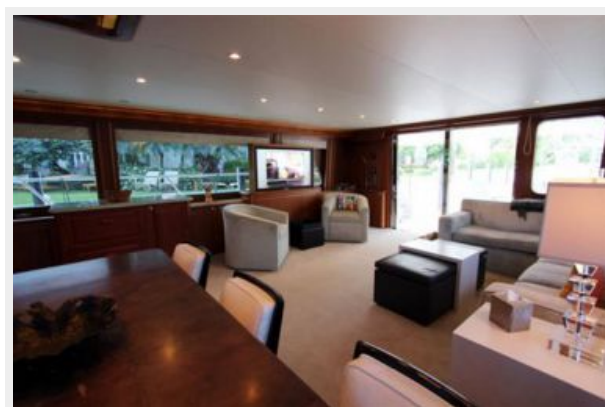
При продаже яхты исключаются личные вещи владельца.

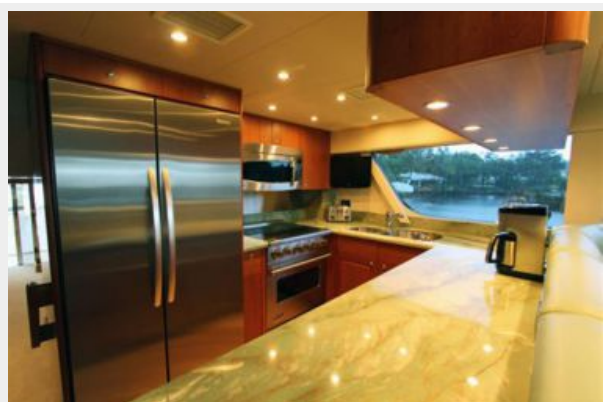
Отказ от ответственности

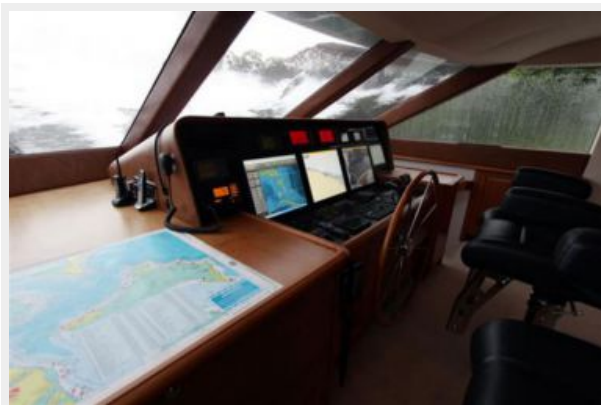
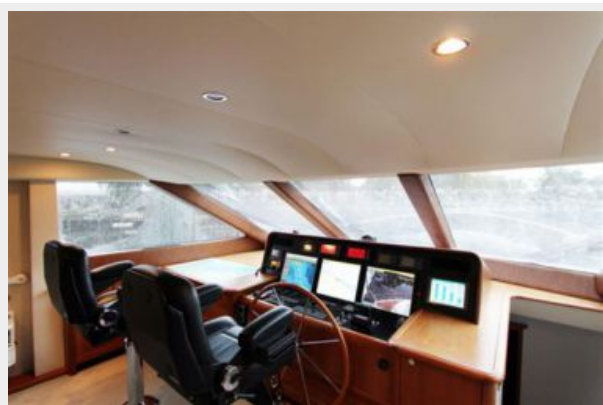
Компания предоставляет описание судна или яхты добросовестно, но не может гарантировать точность этой информации, а также не ручается за техническое состояние. Покупатель должен проинструктировать своих агентов или оценщиков исследовать представленную информацию более подробно, по собственному желанию. Продажа судна или яхты, изменение цены или снятие с продажи будет происходить без предварительного уведомления.

ФОТОГРАФИИ

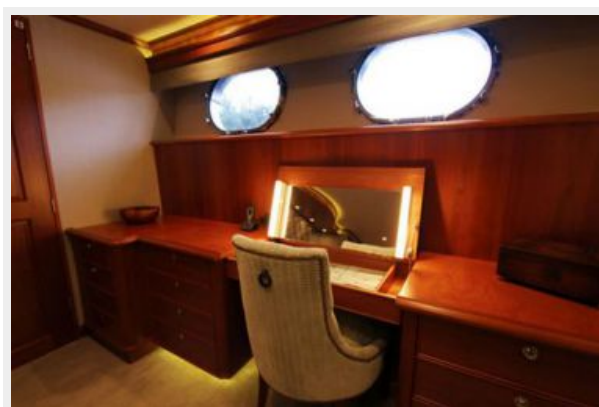
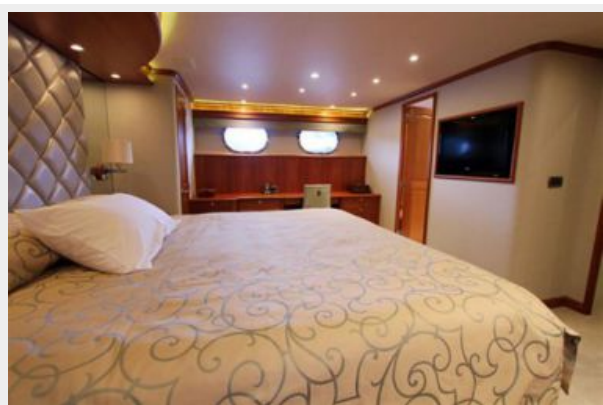


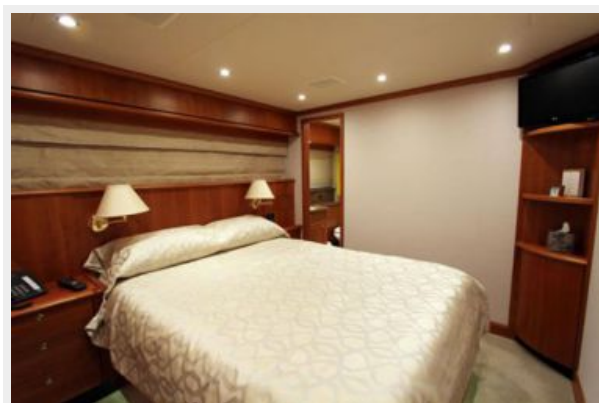


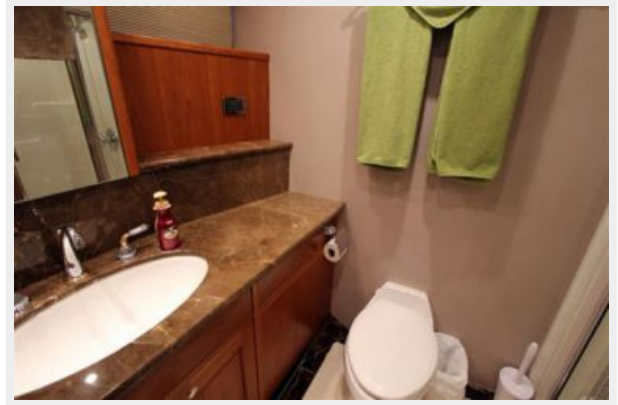


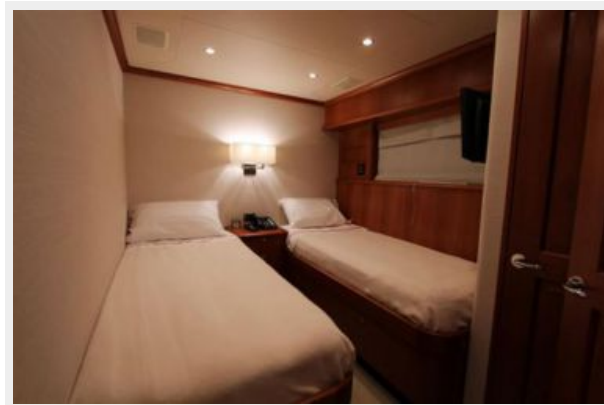
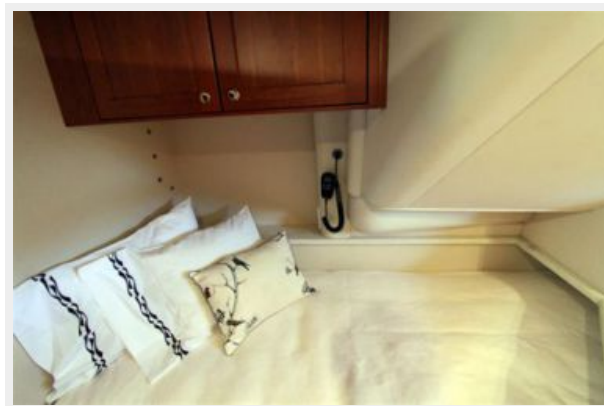


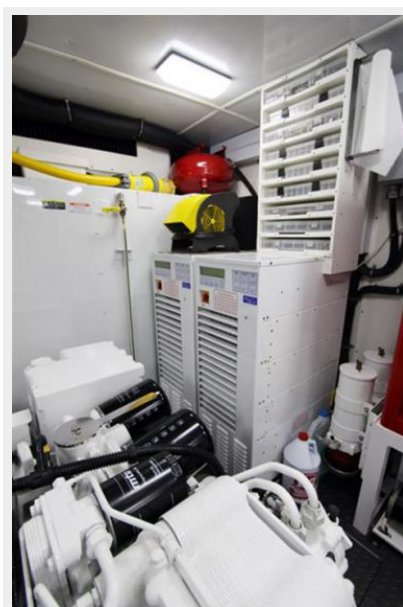














КОНТАКТЫ

Андрей Шестаков (Andrey Shestakov) – ведущий яхтенный брокер отдела продаж яхт и судов компании Shestakov Yacht Sales Inc. Официальный представитель Shestakov Yacht Sales Inc. для русскоговорящих клиентов в центральном офисе компании в Майами/Форт Лодердейл/Флорида/США.

Контактная информация

Email: andrey@shestakovyachtsales.com

Web: shestakovyachtsales.com

Телефоны

Краснодарский край: **+7(918)465-66-44**

США, Майами, Флорида: **+1(954)274-4435**

Время работы

Понедельник – Суббота: **9:00 - 21:00**
EDT

Воскресенье: **Закрето**

Адрес



Harbour Towne Marina, 850 NE 3rd St,
STE 213, Dania, FL 33004