

## SWEET RETREAT — SEA RAY



**Builder:** SEA RAY

**LOA:** 46' 0" (14.02m)

**Year Built:** 2003

**Model:** Cruiser

**Price:** PRICE ON APPLICATION

**Location:** United States

Our experienced yacht broker, Andrey Shestakov, will help you choose and buy a yacht that best suits your needs **Sweet Retreat — SEA RAY** from our catalogue. Presently, at Shestakov Yacht Sales Inc., we have a wide variety of yachts available on our sale's list. We also work in close contact with all the big yacht manufacturers from all over the world.

If you would like to buy a yacht **Sweet Retreat — SEA RAY** or would like help answering any questions concerning purchasing, selling or chartering a yacht, please call **+1(954)274-4435**

# TABLE OF CONTENTS

TABLE OF CONTENTS	2
SPECIFICATIONS	4
Basic Information	4
Dimensions	4
Accommodations	4
Hull and Deck Information	4
Engine Information	4
DETAILED INFORMATION	5
Manufacturer Provided Description	5
Accommodations	5
Galley	5
Deck & Exterior	5
Electronics	5
Electrical Equipment	5
Mechanical	5
Exclusions	5
Disclaimer	6
Exclusions	6
Disclaimer	6
PHOTOS	7
Exterior	7
Exterior	7
Exterior	7
Exterior	7
Cockpit	8
Exterior	8
Cockpit	8
Cockpit	8

---

Cockpit	9
Helm	9
Galley	9
Cabin	9
Cabin	10
Cabin	10
Guest Head	10
Mid Cabin	10
Washer/Dryer	11
Forward Stateroom	11
Forward Stateroom Head	11
Forward Stateroom Head	11
Engine Room	12
Engine Room	12
CONTACTS	13
Contact details	13
Telephones	13
Office hours	13
Address	13

---

# SPECIFICATIONS

---

## Basic Information

---

**Category:** Cruiser

**Sub Category:** Express

**Model Year:** 2003

**Year Built:** 2003

**Country:** United States

## Dimensions

---

**LOA:** 46' 0" (14.02m)

## Accommodations

---

**Total Cabins:** 2

## Hull and Deck Information

---

**Hull Material:** Fiberglass

## Engine Information

---

**Manufacturer:** Cummins

---

# DETAILED INFORMATION

---

## Manufacturer Provided Description

---

The Sea Ray 460 Sundancer is easy to handle and superbly seaworthy. Belowdecks, there is a luxurious interior with two private staterooms, two full heads and room to sleep many friends.

## Accommodations

---

CruisAir air conditioning/heat VacuFlush heads KVH M3 Tracvision Satellite Antenna Direct TV receiver Insignia LCD TV - Salon LG LCD TV - Cockpit

## Galley

---

Refrigerator/freezer Electric stove Microwave oven

## Deck & Exterior

---

Hardtop with new enclosure curtains Cockpit ac/heat Cockpit table Cockpit carepting Icemaker Bow thruster Windlass Foredeck fender holders Remote spotlight Swimplatform with ladder

## Electronics

---

Raytheon RL80C Radar/Chartplotter Raytheon GPS Raytheon ST7000+ Autopilot Icom IC-M304 VHF Radio Clarion Stereo

## Electrical Equipment

---

Westerbeke 10kw generator Glendinning 50amp Cablemaster SmartBoost Battery charger

## Mechanical

---

Oil change system

## Exclusions

---

Owner's personal belongings Tender

---

## Disclaimer

---

The Company offers the details of this vessel in good faith but cannot guarantee or warrant the accuracy of this information nor warrant the condition of the vessel. A buyer should instruct his agents, or his surveyors, to investigate such details as the buyer desires validated. This vessel is offered subject to prior sale, price change, or withdrawal without notice.

---

## Exclusions

---

Owner's personal belongings.

---

## Disclaimer

---

The Company offers the details of this vessel or yacht in good faith but cannot guarantee or warrant the accuracy of this information nor warrant the condition of the vessel. A buyer should instruct his representatives, agents, or his surveyors, to investigate such details as the buyer desires validated. This vessel or yacht is offered subject to prior sale, price change, or withdrawal without notice.

# PHOTOS

Exterior



Exterior



Exterior



Exterior



Exterior



Cockpit



Cockpit



Cockpit





**Cockpit**



**Helm**



**Cabin**



**Galley**



**Cabin**



**Cabin**



**Mid Cabin**



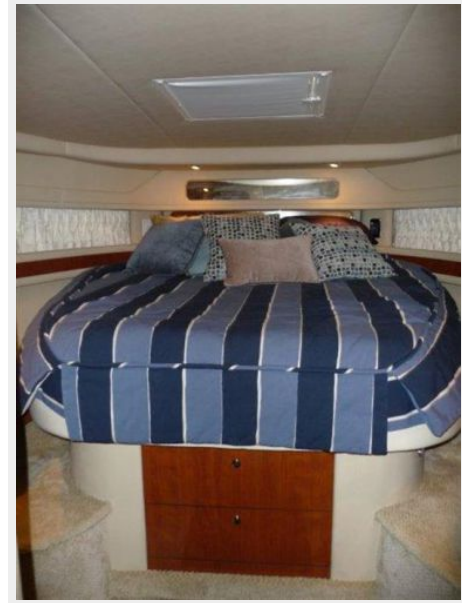
**Guest Head**



**Washer/Dryer**



**Forward Stateroom**



**Forward Stateroom Head**



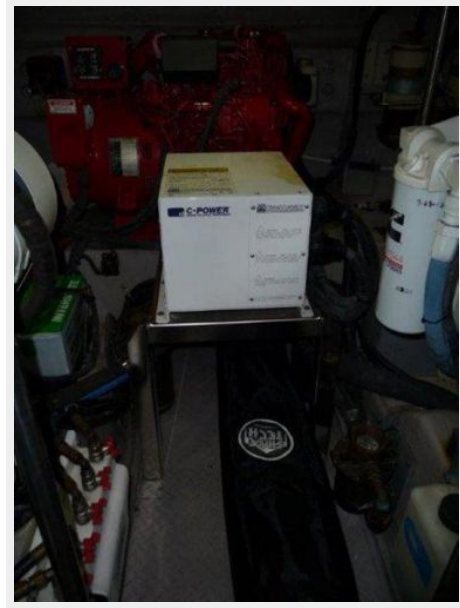
**Forward Stateroom Head**



Engine Room



Engine Room





# CONTACTS

---

Andrey Shestakov, leading yacht broker of the sales department of Shestakov Yacht Sales Inc. Shestakov Yacht Sales Inc., the official representative of the Miami/Fort Lauderdale FL headquarters.

## Contact details

---

Email: [andrey@shestakovyachtsales.com](mailto:andrey@shestakovyachtsales.com)

Web: [shestakovyachtsales.com/en/](http://shestakovyachtsales.com/en/)

## Telephones

---

USA: +1(954)274-4435

## Office hours

---

Monday – Saturday: **9:00 - 21:00** EDT

Sunday: **closed**

## Address

---



Harbour Towne Marina, 850 NE 3rd St,  
STE 213, Dania, FL 33004