

LADY MARY II — VIKING



Builder: VIKING

Year Built: 2014

Model: Sport Fisherman

Price: PRICE ON APPLICATION

Location: United States

LOA: 66' 0" (20.12m)

Beam: 19' 1" (5.82m)

Max Draft: 5' 5" (1.65m)

Cruise Speed: 36 Kts. (41 MPH)

Max Speed: 40 Kts. (46 MPH)

Our experienced yacht broker, Andrey Shestakov, will help you choose and buy a yacht that best suits your needs **Lady Mary II — VIKING** from our catalogue. Presently, at Shestakov Yacht Sales Inc., we have a wide variety of yachts available on our sale's list. We also work in close contact with all the big yacht manufacturers from all over the world.

If you would like to buy a yacht **Lady Mary II — VIKING** or would like help answering any questions concerning purchasing, selling or chartering a yacht, please call **+1(954)274-4435**

TABLE OF CONTENTS

TABLE OF CONTENTS	2
SPECIFICATIONS	3
Basic Information	3
Dimensions	3
Speed, Capacities and Weight	3
Accommodations	3
Hull and Deck Information	3
Engine Information	4
DETAILED INFORMATION	5
Vessel Information	5
Exclusions	9
Disclaimer	9
PHOTOS	10
CONTACTS	17
Contact details	17
Telephones	17
Office hours	17
Address	17

SPECIFICATIONS

Basic Information

Category: Sport Fisherman

Model Year: 2014

Year Built: 2014

Country: United States

Dimensions

LOA: 66' 0" (20.12m)

Beam: 19' 1" (5.82m)

Max Draft: 5' 5" (1.65m)

Speed, Capacities and Weight

Cruise Speed: 36 Kts. (41 MPH)

Max Speed: 40 Kts. (46 MPH)

Displacement: 102875 Pounds

Water Capacity: 340 Gallons

Holding Tank: 210 Gallons

Fuel Capacity: 2250 Gallons

Accommodations

Total Cabins: 3

Total Heads: 4

Crew Cabin: 1

Hull and Deck Information

Hull Material: Fiberglass

Hull Color: Blue

Engine Information

Engines: 2

Manufacturer: MTU

Model: 16V 2000 M91

Engine Type: Inboard

Fuel Type: Diesel

DETAILED INFORMATION

Vessel Information

Salon

- L-shaped sofa to starboard Hi-lo table
- Galley features Sub-Zero under counter drawer refrigerators/freezers
- Full carpet runner
- Electric salon door
- Day head
- Spiral staircase to flybridge
- Upgraded Bose home theater

Galley

- Microwave/Convection oven
- 4 burner cooktop
- Garbage disposal
- Trash compactor

Storage Area

Located just forward of the galley

Companionway

- Stacked washer/dryer
- Central vac system
- Linen closet
- Clear Ice, Ice Maker

- Carpet runner
- Wine cooler
- Teak strips

Master Stateroom, Port Midship

- Athwartship king berth with hinged storage below
- Bose entertainment center.
- Credenza w/4 drawers
- 2 hanging lockers
- Private head and shower
- Upgraded head mirror ceiling

VIP Stateroom, Forward

- Queen berth with hinged access to storage below
- Hanging locker
- Flat screen TV
- Private head and shower

Guest Stateroom, Starboard Midship

- Upper/lower bunks with innerspring mattresses
- Storage beneath lower bunk
- Hanging locker
- Head and shower

Crew Quarters, Starboard Aft

- Access to engine room
- Twin bunks w/innerspring mattresses

- Hanging locker
- Private head and stall shower
- Flat screen TV

Cockpit & fwd deck

- Mezzanine teak deck
- Cockpit Pto. Rican sun shade
- Transom fishbox plumbed, window and lights
- Underwater lights x 2
- Eskimo ice chipper
- Refrigerated step box
- Chocks for tender
- Hydraulic davit
- Salon fwd black mask
- Swim platform with ladder
- Anchor locker bracket

Flybridge

- Enclosed Flybridge
- Teak ladder steps
- Fridge
- 19" Flat screen TV

Mechanical

- TWIN MTU 16V2000M91 2030HP
- 2 generators, Onan 21.5KW and 27.5KW

- Windlass
- Hydraulic davit 1700lbs (lift and rotation) and tender chocks
- 1400 GPD Sea Recovery watermaker w/auto flush
- Dual central water pumps
- Dual hydraulic steering pumps
- Dual fuel transfer pumps
- Oil change system w/pumpout to cockpit
- Fuel priming pumps
- Toolbox
- 2 Glendenning cablemaster
- 2 Octoplex power distribution control panels
- 2 voltage stabilizer transformers
- Delta T ventilation system
- Fire control system
- DC bow thruster
- DC backup fresh water pump

Electronics

- Dual radar mast
- Flir m-324xp, NTSC, single payload camera
- Plotter Furuno navnet 3d MFDBB processor
- Radar Furuno navnet 3d drs25a 25kw 96nm
- Radar array 6' Furuno #XN13A/6
- 3 monitor 17" led glass bridge marine kep
- Plotter Furuno navnet 3d MFDBB processor
- Sirius sat weather module bbwx2

- Satradio Sirius antenna shake sra-40
- Sounder, navnet 3d dff3 1-3kw
- Display, Furuno rd33 data organizer
- Simrad autopilot interface simrad sg05
- 2 vhf radio icom ic-m604 black inc
- Vhf command mic icom hm-162 b black
- Hailer horn 5x8 speaker speco spc-15rp
- Spotlight acr rcl100 24v
- SatTV kvh tracvision m7 gla w/gyro
- Radar satellite antenna pod 28" round
- Custom teak cupholders

EXCLUSIONS

- Life raft

Exclusions

Owner's personal belongings.

Disclaimer

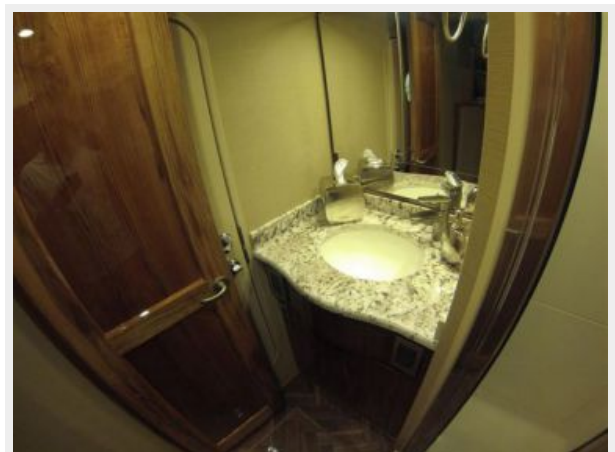
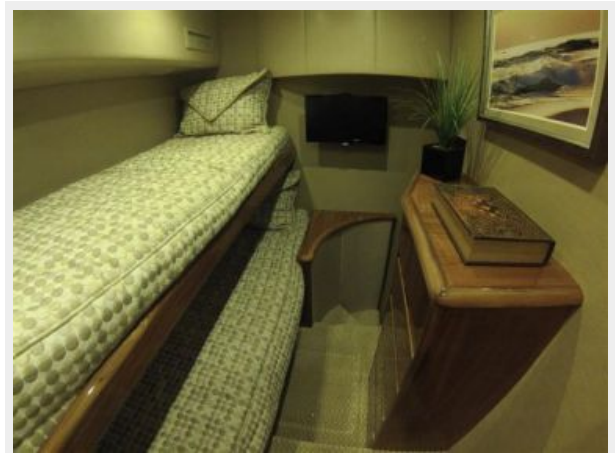
The Company offers the details of this vessel or yacht in good faith but cannot guarantee or warrant the accuracy of this information nor warrant the condition of the vessel. A buyer should instruct his representatives, agents, or his surveyors, to investigate such details as the buyer desires validated. This vessel or yacht is offered subject to prior sale, price change, or withdrawal without notice.

PHOTOS















CONTACTS

Andrey Shestakov, leading yacht broker of the sales department of Shestakov Yacht Sales Inc. Shestakov Yacht Sales Inc., the official representative of the Miami/Fort Lauderdale FL headquarters.

Contact details

Email: andrey@shestakovyachtsales.com

Web: shestakovyachtsales.com/en/

Telephones

USA: +1(954)274-4435

Office hours

Monday – Saturday: **9:00 - 21:00** EDT

Sunday: **closed**

Address



Harbour Towne Marina, 850 NE 3rd St,
STE 213, Dania, FL 33004