

## SYARDA — ALDEN YACHTS



**Builder:** ALDEN YACHTS

**Year Built:** 2000

**Model:** Cruiser

**Price:** PRICE ON APPLICATION

**Location:** United States

**LOA:** 46' 0" (14.02m)

**Beam:** 14' 3" (4.34m)

**Min Draft:** 3' 8" (1.12m)

**Max Draft:** 3' 8" (1.12m)

**Cruise Speed:** 19 Kts. (22 MPH)

**Max Speed:** 26 Kts. (30 MPH)

Our experienced yacht broker, Andrey Shestakov, will help you choose and buy a yacht that best suits your needs Syarda — ALDEN YACHTS from our catalogue. Presently, at Shestakov Yacht Sales Inc., we have a wide variety of yachts available on our sale's list. We also work in close contact with all the big yacht manufacturers from all over the world.

If you would like to buy a yacht Syarda — ALDEN YACHTS or would like help answering any questions concerning purchasing, selling or chartering a yacht, please call +1(954)274-4435

# TABLE OF CONTENTS

---

TABLE OF CONTENTS	2
SPECIFICATIONS	5
Overview	5
Basic Information	5
Dimensions	5
Speed, Capacities and Weight	5
Accommodations	6
Hull and Deck Information	6
Engine Information	6
DETAILED INFORMATION	7
46' Alden Overview	7
46' Alden Vessel Walkthrough	7
46' Alden Accommodations	7
46' Alden Galley	7
46' Alden Dining	8
46' Alden Master Stateroom	8
46' Alden Guest Stateroom	8
46' Alden Upper Deck	8
46' Alden Helm	8
46' Alden Cockpit	8
46' Alden Electronics	8
46' Alden Electrical System	9
46' Alden Engine/Mechanical Equipment	9
46' Alden Deck Equipment	10
46' Alden Safety & Fire Protection	10
46' Alden Exclusions	10
46' Alden Disclaimer	10
Exclusions	11

Disclaimer	11
PHOTOS	12
46' Alden port forward profile	12
46' Alden port aft profile	12
46' Alden aft profile	12
46' Alden anchor windlass	12
46' Alden foredeck	13
46' Alden foredeck aft	13
46' Alden port side deck photo1	13
46' Alden port side deck photo2	13
46' Alden starboard side deck photo1	14
46' Alden starboard side deck photo2	14
46' Alden cockpit photo1	14
46' Alden cockpit photo2	14
46' Alden swimplatform	14
46' Alden upper deck forward	14
46' Alden upper deck aft	15
46' Alden upper deck port	15
46' Alden upper deck port aft seating	15
46' Alden upper deck port forward	15
46' Alden upper deck starboard	15
46' Alden upper deck starboard seating	15
46' Alden helm photo1	16
46' Alden helm photo2	16
46' Alden galley	16
46' Alden galley starboard forward	16
46' Alden master stateroom	16
46' Alden master stateroom port	16
46' Alden master stateroom head	17

---

46' Alden master stateroom starboard	17
46' Alden guest head	17
46' Alden guest stateroom	17
46' Alden guest shower	18
46' Alden engine room forward	18
46' Alden engine room aft	18
46' Alden port main engine	18
46' Alden port Racor fuel filters	18
46' Alden starboard main engine	18
46' Alden starboard Racor fuel filters	19
46' Alden oil change system	19
46' Alden electrical panel	19
46' Alden water heater	19
46' Alden battery charger	20
46' Alden generator	20
46' Alden inverter	20
<b>CONTACTS</b>	<b>21</b>
Contact details	21
Telephones	21
Office hours	21
Address	21

---

# SPECIFICATIONS

---

## Overview

---

**46' Alden 46 Hardtop Downeast Lobsterboat Express Cruiser** Syarda (ex. Gulliver) is hull #4 of the Alden 46 Hardtop Express series. She is in very good condition and available anytime for inspection. Syarda offers a 2 stateroom 2 head layout, low hour Yanmar main engines, very low hour Northern Lights generator and an inverter. Price reduced!

## Basic Information

---

**Category:** Cruiser

**Sub Category:** Express

**Model Year:** 2000

**Year Built:** 2000

**Country:** United States

**Registration #:** ADH46004D000

**Vessel Top:** Hardtop

**Cockpit:** Yes

## Dimensions

---

**LOA:** 46' 0" (14.02m)

**Beam:** 14' 3" (4.34m)

**Min Draft:** 3' 8" (1.12m)

**Max Draft:** 3' 8" (1.12m)

## Speed, Capacities and Weight

---

**Cruise Speed:** 19 Kts. (22 MPH)

**Max Speed:** 26 Kts. (30 MPH)

**Displacement:** 34736 Pounds

**Water Capacity:** 178 Gallons

**Fuel Capacity:** 590 Gallons

---

## Accommodations

---

**Total Cabins:** 2

**Total Berths:** 4

**Sleeps:** 4

**Total Heads:** 2

---

## Hull and Deck Information

---

**Hull Material:** Fiberglass

**Deck Material:** Composite Fiberglass

**Hull Configuration:** Semi-Displacement

---

## Engine Information

---

**Engines:** 2

**Manufacturer:** Yanmar

**Model:** 6CX-GTE

**Engine Type:** Inboard

**Fuel Type:** Diesel

---

# DETAILED INFORMATION

---

## 46' Alden Overview

---

### 46' Alden 46 Hardtop Express Downeast Cruiser

Syarda (ex. Gulliver) is hull #4 of the Alden 46 Hardtop Express series. She is in very good condition and available anytime for inspection. Syarda offers a 2 stateroom 2 head layout, low hour Yanmar main engines, very low hour Northern Lights generator and an inverter. Price reduced!

## 46' Alden Vessel Walkthrough

---

From the swimplatform, walk through the transom gate into the large cockpit, where you will find built-in seating and storage on each side aft, steps to each wide side deck and the enter the upper deck. Once inside the upper deck, you will find built-in L-shaped seating and hi/lo folding table to port, benchseat to starboard, lower helm starboard forward and forward facing benchseat port forward. Then step down into the lower deck with the galley to port, guest stateroom to starboard, guest head and enclosed shower port forward and then the master stateroom with ensuite head and enclosed shower all the way forward. Engine room access is via a deck hatch in the upper deck.

## 46' Alden Accommodations

---

Syarda offers a master stateroom forward with v-berth and ensuite head with enclosed shower and a guest stateroom to port with side by side single berths. The guest head is to port with an enclosed shower.

## 46' Alden Galley

---

The galley is located to port across from the guest stateroom.

- 2 sets of Sub-Zero drawer style refrigerators and freezers
- Princess ceramic top 3-burner electric cooktop
- Sharp Carousel convection/microwave oven
- Double stainless steel sinks
- Port light and overhead hatch
- Storage drawers and cabinets

- Dry storage
- Teak & holly sole

---

## 46' Alden Dining

---

Dining space is available at the upper deck settee and table.

---

## 46' Alden Master Stateroom

---

The master stateroom is located forward and offers a v-berth, 2 portlights, overhead hatch, nightstands, reading lights, storage drawers, hanging locker, carpet and ensuite head with enclosed shower.

---

## 46' Alden Guest Stateroom

---

The guest stateroom is located to starboard and offers side by side single berths, portlight, overhead hatch, shelf, nightstand, storage drawers, hanging locker and reading lights.

---

## 46' Alden Upper Deck

---

The open and airy upper deck area offers a built-in, L-shaped settee and folding, hi/lo teak table to port, a benchseat port forward, a benchseat to starboard, 2 overhead hatches, opening center windshield, carpet over non-skid, Oceanair blinds and Eisenglass enclosure aft.

---

## 46' Alden Helm

---

The helm is starboard forward in the upper deck and offers a benchseat and full console.

---

## 46' Alden Cockpit

---

The large cockpit offers a non-skid deck, benchseats with storage both sides aft, transom door to the integral swimplatform, steps to each wide side deck, lazarette access, storage in each bulwark and double teak half doors forward with Eisenglass above.

---

## 46' Alden Electronics

---

- Ritchie Powerdamp magnetic compass
- Furuno 36nm Radar



- 
- Garmin GPSTMap 5212 Multi-Function Display
  - Raytheon ST80 depth sounder
  - Icom IC-M424 VHF
  - Simrad Robertson AP20 autopilot

## **46' Alden Electrical System**

---

- Northern Lights 12 kW generator with 134 hours
- Xantrex 2500 watt inverter
- Heart Interface Link 2000-R remote inverter/battery monitoring panel
- C-Charger 5000 Series 40 amp battery charger
- Guest battery switches
- Newmar galvanic isolator
- 50 amp shore cord

## **46' Alden Engine/Mechanical Equipment**

---

- Twin Yanmar 465 hp main engines with 1540 hours each
- ZF IRM280A.2 gearboxes
- MicroCommander electronic engine controls
- Tides dripless shaft seals
- Groco sea strainers
- Hynautic hydraulic steering system
- Racor dual 75/900Max fuel filters with vacuum gauges
- Reverso oil change system
- Bennett trim tabs
- Marine Air Systems reverse cycle air conditioning/heating system
- Raritan 12 gallon water heater

- Vacuflush heads
- Tank Tender tank level monitor system
- Skeg protection for the prop

---

## **46' Alden Deck Equipment**

---

- Lewmar anchor windlass with foot controls
- CQR 45lb anchor
- Stainless steel sampson post
- Stainless steel rails
- Stainless steel deck hardware
- Weaver davit bases on the swimplatform
- Non-skid decks
- Fresh water hot/cold shower in the cockpit

---

## **46' Alden Safety & Fire Protection**

---

- Fireboy FE241 engine room fire suppression system
- Fireboy-Xintex carbon monoxide detector
- Rule bilge pumps
- Fire extinguishers

---

## **46' Alden Exclusions**

---

- Sellers' personal belongings
- Artwork

---

## **46' Alden Disclaimer**

---

The Company offers the details of this vessel in good faith but cannot guarantee or warrant the accuracy of this information nor warrant the condition of the vessel. A buyer should instruct his

agents, or his surveyors, to investigate such details as the buyer desires validated. This vessel is offered subject to prior sale, price change, or withdrawal without notice.

## **Exclusions**

---

Owner's personal belongings.

## **Disclaimer**

---

The Company offers the details of this vessel or yacht in good faith but cannot guarantee or warrant the accuracy of this information nor warrant the condition of the vessel. A buyer should instruct his representatives, agents, or his surveyors, to investigate such details as the buyer desires validated. This vessel or yacht is offered subject to prior sale, price change, or withdrawal without notice.

# PHOTOS

46' Alden port forward profile



46' Alden port aft profile



46' Alden aft profile



46' Alden anchor windlass



**46' Alden foredeck**



**46' Alden foredeck aft**



**46' Alden port side deck photo1**



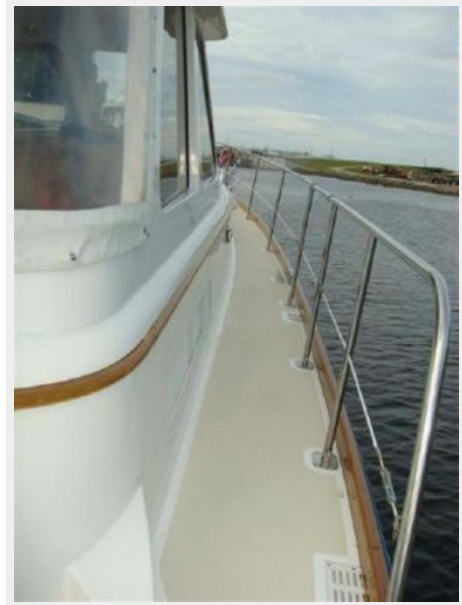
**46' Alden port side deck photo2**



46' Alden starboard side deck photo1



46' Alden starboard side deck photo2



46' Alden cockpit photo1



46' Alden cockpit photo2



46' Alden swimplatform



46' Alden upper deck forward



**46' Alden upper deck aft**



**46' Alden upper deck port**



**46' Alden upper deck port aft seating**



**46' Alden upper deck port forward**



**46' Alden upper deck starboard**



**46' Alden upper deck starboard seating**



**46' Alden helm photo1**



**46' Alden helm photo2**



**46' Alden galley**



**46' Alden galley starboard forward**



**46' Alden master stateroom**



**46' Alden master stateroom port**





**46' Alden master stateroom head**

**46' Alden master stateroom starboard**



**46' Alden guest head**

**46' Alden guest stateroom**



**46' Alden guest shower**



**46' Alden engine room forward**



**46' Alden engine room aft**



**46' Alden port main engine**



**46' Alden port Racor fuel filters**



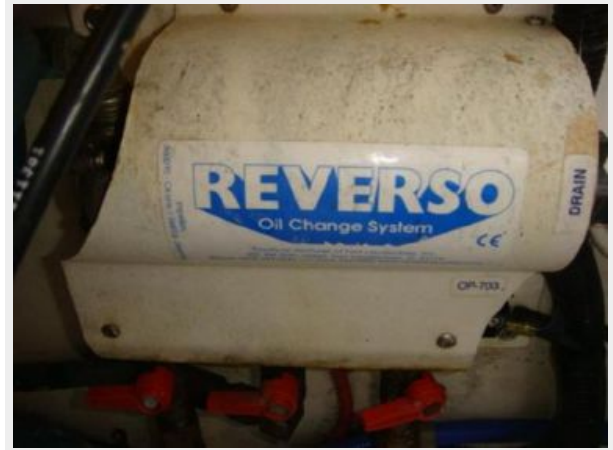
**46' Alden starboard main engine**



**46' Alden starboard Racor fuel filters**



**46' Alden oil change system**



**46' Alden water heater**



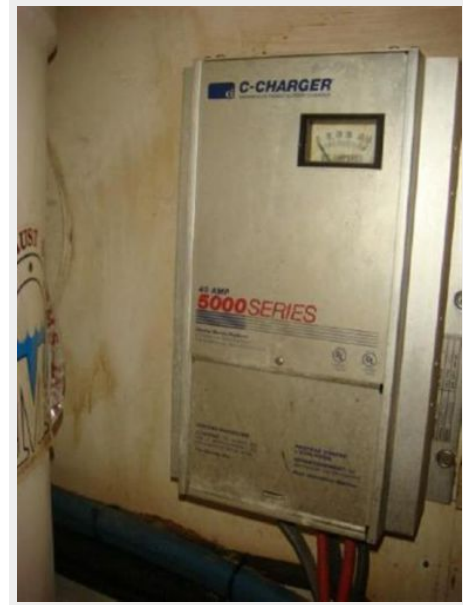
**46' Alden electrical panel**



46' Alden generator



46' Alden battery charger



46' Alden inverter



# CONTACTS

---

Andrey Shestakov, leading yacht broker of the sales department of Shestakov Yacht Sales Inc. Shestakov Yacht Sales Inc., the official representative of the Miami/Fort Lauderdale FL headquarters.

## Contact details

---

Email: [andrey@shestakovyachtsales.com](mailto:andrey@shestakovyachtsales.com)

Web: [shestakovyachtsales.com/en/](http://shestakovyachtsales.com/en/)

## Telephones

---

USA: +1(954)274-4435

## Office hours

---

Monday – Saturday: **9:00 - 21:00** EDT

Sunday: **closed**

## Address

---



Harbour Towne Marina, 850 NE 3rd St,  
STE 213, Dania, FL 33004