

SYARDA — ALDEN YACHTS



Судостроитель: ALDEN YACHTS

Год постройки: 2000

Модель: Крейсер

Цена: **ЦЕНА ЯХТЫ ПО ЗАПРОСУ**

Местонахождение: United States

Длина общая: 46' 0" (14.02m)

Ширина: 14' 3" (4.34m)

Мин. осадка: 3' 8" (1.12m)

Макс. осадка: 3' 8" (1.12m)

Крейс. скорость: 19 Kts. (22 MPH)

Макс. скорость: 26 Kts. (30 MPH)

Купить Syarda — ALDEN YACHTS а также выбрать подходящую вам яхту из нашего каталога яхт вам поможет опытный яхтенный брокер Андрей Шестаков. На сегодняшний день компания Shestakov Yacht Sales Inc. имеет большое количество яхт в собственном списке продаж, а также тесно сотрудничает со всеми крупными яхтенными производителями по всему миру.

Для того чтобы купить яхту Syarda — ALDEN YACHTS а также проконсультироваться по любому вопросу связанному с покупкой, продажей, чартером яхт позвоните по телефону **+7(918)465-66-44**.

ОГЛАВЛЕНИЕ

ОГЛАВЛЕНИЕ	2
ХАРАКТЕРИСТИКИ	5
Обзор	5
Основная информация	5
Размеры	5
Скорость, вместимость и масса	5
Размещение	6
Корпус и палуба	6
Информация о двигателе	6
ПОДРОБНОЕ ОПИСАНИЕ	7
46' Alden Overview	7
46' Alden Vessel Walkthrough	7
46' Alden Accommodations	7
46' Alden Galley	7
46' Alden Dining	8
46' Alden Master Stateroom	8
46' Alden Guest Stateroom	8
46' Alden Upper Deck	8
46' Alden Helm	8
46' Alden Cockpit	8
46' Alden Electronics	8
46' Alden Electrical System	9
46' Alden Engine/Mechanical Equipment	9
46' Alden Deck Equipment	10
46' Alden Safety & Fire Protection	10
46' Alden Exclusions	10
46' Alden Disclaimer	10
Исключения	11

Отказ от ответственности	11
ФОТОГРАФИИ	12
46' Alden port forward profile	12
46' Alden port aft profile	12
46' Alden aft profile	12
46' Alden anchor windlass	12
46' Alden foredeck	13
46' Alden foredeck aft	13
46' Alden port side deck photo1	13
46' Alden port side deck photo2	13
46' Alden starboard side deck photo1	14
46' Alden starboard side deck photo2	14
46' Alden cockpit photo1	14
46' Alden cockpit photo2	14
46' Alden swimplatform	14
46' Alden upper deck forward	14
46' Alden upper deck aft	15
46' Alden upper deck port	15
46' Alden upper deck port aft seating	15
46' Alden upper deck port forward	15
46' Alden upper deck starboard	15
46' Alden upper deck starboard seating	15
46' Alden helm photo1	16
46' Alden helm photo2	16
46' Alden galley	16
46' Alden galley starboard forward	16
46' Alden master stateroom	16
46' Alden master stateroom port	16
46' Alden master stateroom head	17

46' Alden master stateroom starboard	17
46' Alden guest head	17
46' Alden guest stateroom	17
46' Alden guest shower	18
46' Alden engine room forward	18
46' Alden engine room aft	18
46' Alden port main engine	18
46' Alden port Racor fuel filters	18
46' Alden starboard main engine	18
46' Alden starboard Racor fuel filters	19
46' Alden oil change system	19
46' Alden electrical panel	19
46' Alden water heater	19
46' Alden battery charger	20
46' Alden generator	20
46' Alden inverter	20
КОНТАКТЫ	21
Контактная информация	21
Телефоны	21
Время работы	21
Адрес	21

ХАРАКТЕРИСТИКИ

Обзор

46' Alden 46 Hardtop Downeast Lobsterboat Express Cruiser Syarda (ex. Gulliver) is hull #4 of the Alden 46 Hardtop Express series. She is in very good condition and available anytime for inspection. Syarda offers a 2 stateroom 2 head layout, low hour Yanmar main engines, very low hour Northern Lights generator and an inverter. Price reduced!

Основная информация

Тип судна: Крейсер	Подкатегория: Express
Модельный год: 2000	Год постройки: 2000
Страна: United States	Регистрационный номер: ADH46004D000
Верх: Hardtop	Кубрик: Да

Размеры

Длина общая: 46' 0" (14.02m)	Ширина: 14' 3" (4.34m)
Мин. осадка: 3' 8" (1.12m)	Макс. осадка: 3' 8" (1.12m)

Скорость, вместимость и масса

Крейс. скорость: 19 Kts. (22 MPH)	Макс. скорость: 26 Kts. (30 MPH)
Водоизмещение: 34736 Pounds	Вместимость воды: 178 Gallons
Объем топливного бака: 590 Gallons	

Размещение

Всего кают: 2

Всего коек: 4

Спальные места: 4

Всего ком. состава: 2

Корпус и палуба

Материал корпуса: Fiberglass

Материал палубы: Composite Fiberglass

Комплектация корпуса: Semi-Displacement

Информация о двигателе

Двигатели: 2

Производитель: Yanmar

Модель: 6CX-GTE

Тип двигателя: Inboard

Тип топлива: Diesel

ПОДРОБНОЕ ОПИСАНИЕ

46' Alden Overview

46' Alden 46 Hardtop Express Downeast Cruiser

Syarda (ex. Gulliver) is hull #4 of the Alden 46 Hardtop Express series. She is in very good condition and available anytime for inspection. Syarda offers a 2 stateroom 2 head layout, low hour Yanmar main engines, very low hour Northern Lights generator and an inverter. Price reduced!

46' Alden Vessel Walkthrough

From the swimplatform, walk through the transom gate into the large cockpit, where you will find built-in seating and storage on each side aft, steps to each wide side deck and the enter the upper deck. Once inside the upper deck, you will find built-in L-shaped seating and hi/lo folding table to port, benchseat to starboard, lower helm starboard forward and forward facing benchseat port forward. Then step down into the lower deck with the galley to port, guest stateroom to starboard, guest head and enclosed shower port forward and then the master stateroom with ensuite head and enclosed shower all the way forward. Engine room access is via a deck hatch in the upper deck.

46' Alden Accommodations

Syarda offers a master stateroom forward with v-berth and ensuite head with enclosed shower and a guest stateroom to port with side by side single berths. The guest head is to port with an enclosed shower.

46' Alden Galley

The galley is located to port across from the guest stateroom.

- 2 sets of Sub-Zero drawer style refrigerators and freezers
- Princess ceramic top 3-burner electric cooktop
- Sharp Carousel convection/microwave oven
- Double stainless steel sinks
- Port light and overhead hatch
- Storage drawers and cabinets

- Dry storage
- Teak & holly sole

46' Alden Dining

Dining space is available at the upper deck settee and table.

46' Alden Master Stateroom

The master stateroom is located forward and offers a v-berth, 2 portlights, overhead hatch, nightstands, reading lights, storage drawers, hanging locker, carpet and ensuite head with enclosed shower.

46' Alden Guest Stateroom

The guest stateroom is located to starboard and offers side by side single berths, portlight, overhead hatch, shelf, nightstand, storage drawers, hanging locker and reading lights.

46' Alden Upper Deck

The open and airy upper deck area offers a built-in, L-shaped settee and folding, hi/lo teak table to port, a benchseat port forward, a benchseat to starboard, 2 overhead hatches, opening center windshield, carpet over non-skid, Oceanair blinds and Eisenglass enclosure aft.

46' Alden Helm

The helm is starboard forward in the upper deck and offers a benchseat and full console.

46' Alden Cockpit

The large cockpit offers a non-skid deck, benchseats with storage both sides aft, transom door to the integral swimplatform, steps to each wide side deck, lazarette access, storage in each bulwark and double teak half doors forward with Eisenglass above.

46' Alden Electronics

- Ritchie Powerdamp magnetic compass
- Furuno 36nm Radar

- Garmin GPSMap 5212 Multi-Function Display
- Raytheon ST80 depth sounder
- Icom IC-M424 VHF
- Simrad Robertson AP20 autopilot

46' Alden Electrical System

- Northern Lights 12 kW generator with 134 hours
- Xantrex 2500 watt inverter
- Heart Interface Link 2000-R remote inverter/battery monitoring panel
- C-Charger 5000 Series 40 amp battery charger
- Guest battery switches
- Newmar galvanic isolator
- 50 amp shore cord

46' Alden Engine/Mechanical Equipment

- Twin Yanmar 465 hp main engines with 1540 hours each
- ZF IRM280A.2 gearboxes
- MicroCommander electronic engine controls
- Tides dripless shaft seals
- Groco sea strainers
- Hynautic hydraulic steering system
- Racor dual 75/900Max fuel filters with vacuum gauges
- Reverso oil change system
- Bennett trim tabs
- Marine Air Systems reverse cycle air conditioning/heating system
- Raritan 12 gallon water heater

- Vacuflush heads
- Tank Tender tank level monitor system
- Skeg protection for the prop

46' Alden Deck Equipment

- Lewmar anchor windlass with foot controls
- CQR 45lb anchor
- Stainless steel sampson post
- Stainless steel rails
- Stainless steel deck hardware
- Weaver davit bases on the swimplatform
- Non-skid decks
- Fresh water hot/cold shower in the cockpit

46' Alden Safety & Fire Protection

- Fireboy FE241 engine room fire suppression system
- Fireboy-Xintex carbon monoxide detector
- Rule bilge pumps
- Fire extinguishers

46' Alden Exclusions

- Sellers' personal belongings
- Artwork

46' Alden Disclaimer

The Company offers the details of this vessel in good faith but cannot guarantee or warrant the accuracy of this information nor warrant the condition of the vessel. A buyer should instruct his

agents, or his surveyors, to investigate such details as the buyer desires validated. This vessel is offered subject to prior sale, price change, or withdrawal without notice.

Исключения

При продаже яхты исключаются личные вещи владельца.

Отказ от ответственности

Компания предоставляет описание судна или яхты добросовестно, но не может гарантировать точность этой информации, а также не ручается за техническое состояние. Покупатель должен проинструктировать своих агентов или оценщиков исследовать представленную информацию более подробно, по собственному желанию. Продажа судна или яхты, изменение цены или снятие с продажи будет происходить без предварительного уведомления.

ФОТОГРАФИИ

46' Alden port forward profile



46' Alden port aft profile



46' Alden aft profile



46' Alden anchor windlass



46' Alden foredeck



46' Alden foredeck aft



46' Alden port side deck photo1



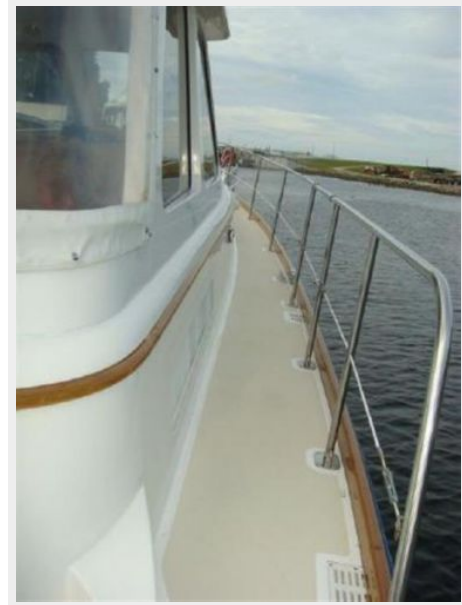
46' Alden port side deck photo2



46' Alden starboard side deck photo1



46' Alden starboard side deck photo2



46' Alden cockpit photo1



46' Alden cockpit photo2



46' Alden swimplatform



46' Alden upper deck forward



46' Alden upper deck aft



46' Alden upper deck port



46' Alden upper deck port aft seating



46' Alden upper deck port forward



46' Alden upper deck starboard



46' Alden upper deck starboard seating



46' Alden helm photo1



46' Alden helm photo2



46' Alden galley



46' Alden galley starboard forward



46' Alden master stateroom



46' Alden master stateroom port



46' Alden master stateroom head

46' Alden master stateroom starboard



46' Alden guest head

46' Alden guest stateroom



46' Alden guest shower



46' Alden engine room forward



46' Alden engine room aft



46' Alden port main engine



46' Alden port Racor fuel filters



46' Alden starboard main engine



46' Alden starboard Racor fuel filters



46' Alden oil change system



46' Alden water heater



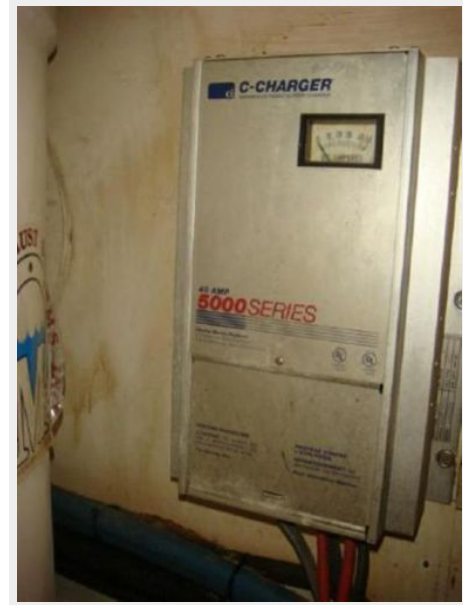
46' Alden electrical panel



46' Alden generator



46' Alden battery charger



46' Alden inverter



КОНТАКТЫ

Андрей Шестаков (Andrey Shestakov) – ведущий яхтенный брокер отдела продаж яхт и судов компании Shestakov Yacht Sales Inc. Официальный представитель Shestakov Yacht Sales Inc. для русскоговорящих клиентов в центральном офисе компании в Майами/Форт Лодердейл/Флорида/США.

Контактная информация

Email: andrey@shestakovyachtsales.com

Web: shestakovyachtsales.com

Телефоны

Краснодарский край: **+7(918)465-66-44**

США, Майами, Флорида: **+1(954)274-4435**

Время работы

Понедельник – Суббота: **9:00 - 21:00**
EDT

Воскресенье: **Закрито**

Адрес



Harbour Towne Marina, 850 NE 3rd St,
STE 213, Dania, FL 33004