

## RS EDEN — DEFOE BOAT AND MOTOR WORKS



**Судостроитель:**  
DEFOE BOAT AND MOTOR WORKS

**Год постройки:** 1930

**Модель:** Моторная яхта

**Цена:** **ЦЕНА ЯХТЫ ПО ЗАПРОСУ**

**Местонахождение:** France

**Длина общая:** 162' 5" (49.50m)

**Ширина:** 24' 2" (7.35m)

**Макс. осадка:** 10' 10" (3.30m)

**Крейс. скорость:** 11 Kts. (13 MPH)

**Макс. скорость:** 12 Kts. (14 MPH)

Купить **RS EDEN — DEFOE BOAT AND MOTOR WORKS** а также выбрать подходящую вам яхту из нашего каталога яхт вам поможет опытный яхтенный брокер Андрей Шестаков. На сегодняшний день компания **Shestakov Yacht Sales Inc.** имеет большое количество яхт в собственном списке продаж, а также тесно сотрудничает со всеми крупными яхтенными производителями по всему миру.

Для того чтобы купить яхту **RS EDEN — DEFOE BOAT AND MOTOR WORKS** а также проконсультироваться по любому вопросу связанному с покупкой, продажей, чартером яхт позвоните по телефону **+7(918)465-66-44**.

# ОГЛАВЛЕНИЕ

---

ОГЛАВЛЕНИЕ	2
ХАРАКТЕРИСТИКИ	3
Обзор	3
Основная информация	3
Размеры	3
Скорость, вместимость и масса	3
Размещение	4
Корпус и палуба	4
Информация о двигателе	4
ПОДРОБНОЕ ОПИСАНИЕ	5
DETAILED SPECIFICATIONS	5
Исключения	10
Отказ от ответственности	10
ФОТОГРАФИИ	11
КОНТАКТЫ	15
Контактная информация	15
Телефоны	15
Время работы	15
Адрес	15

# ХАРАКТЕРИСТИКИ

## Обзор

RS EDEN is a magnificent clipper bow classic with great personality and charm. She began life in 1930 as Janidore and, following a total rebuild completed in 2007; many of her original features have been restored. Every modern comfort is on board and there is a particularly good upper deck dining and sunbathing terrace. Here reinstated masts and dining saloon with mahogany panelling, hardwood floor and cambered deck give RS EDEN a delightful period character. Modern features include a new sun deck complete with spa pool.

## Основная информация

**Тип судна:** Моторная яхта

**Модельный год:** 1930

**Год постройки:** 1930

**Год обновления:** 2013

**Страна:** France

## Размеры

**Длина общая:** 162' 5" (49.50m)

**Длина по ватерлинии:** 137' 10" (42.00m)

**Ширина:** 24' 2" (7.35m)

**Макс. осадка:** 10' 10" (3.30m)

## Скорость, вместимость и масса

**Крейс. скорость:** 11 Kts. (13 MPH)

**Макс. скорость:** 12 Kts. (14 MPH)

**Чистый вес:** 374 Pounds

**Вместимость воды:** 3962.58078 Gallons

**Объем топливного бака:** 10038.537976

Gallons

---

## Размещение

---

**Всего кают:** 6

**Спальные места:** 11

**Спальных мест экипажа:** 11

---

## Корпус и палуба

---

**Материал корпуса:** Steel

**Дизайнер корпуса:** John H Wells

**Дизайнер экстерьера:** Rainsford  
Saunders Design

**Дизайнер интерьера:** Rainsford Saunders  
Design/Axel Vervoordt

---

## Информация о двигателе

---

**Двигатели:** 2

**Производитель:** Caterpillar

**Модель:** D379

# ПОДРОБНОЕ ОПИСАНИЕ

## DETAILED SPECIFICATIONS

### MAIN CHARACTERISTICS

<b>TYPE</b>	Displacement Motor Yacht
<b>BUILDER</b>	Defoe Boat & Motor Works, USA
<b>NAVAL ARCHITECT ARCHITECT</b>	John H Wells
<b>EXTERIOR DESIGN DESIGN</b>	Rainsford Saunders Design
<b>INTERIOR DESIGN DESIGN</b>	Rainsford Saunders Design/Axel Vervoordt
<b>YEAR</b>	1930
<b>REBUILT</b>	2007
<b>REFIT</b>	2013
<b>CLASSIFICATION</b>	RINA, MCA compliant presently
<b>CONSTRUCTION</b>	Steel Hull, Plywood 'S' Structure
<b>CREW</b>	11 summer / 9 winter
<b>FLAG</b>	Marshall Islands
<b>ENGINES</b>	2 x 650 Hp CAT D379
<b>GT</b>	374 tons
<b>DISPLACEMENT</b>	354 tons

### DIMENSIONS

<b>LOA</b>	49.50m / 162'4"
<b>LWL</b>	42.00m / 137'9"
<b>BEAM</b>	7.35m / 24'1"
<b>DRAFT</b>	3.30m / 10'9"

### SPEED & RANGE UNDER POWER

<b>MAXIMUM SPEED</b>	12 knots
<b>CRUISING SPEED</b>	11 knots
<b>FUEL CONSUMPTION</b>	100 litres per hour at 960 RPN
<b>RANGE</b>	3000nm @ 9 knots

### CAPACITIES

<b>ACCOMODATIONS</b>	10+1 Guests in 6 cabins 1 x Master; 2 x Double; 2 x Twin; 1 x Single
<b>CREW</b>	11 x crew (summer) 9 x crew (winter)
<b>FUEL</b>	38,000 litres / 10,039 US gallons

**FRESH WATER** 15,000 litres / 3,963 US gallons

**ACCOMMODATIONS** · Five cabins on the lower deck and one on the main deck. · Midships on the lower deck is the full beam owner's cabin with his (steam shower) and her bathroom (bath tub). · The VIP cabin is situated on the main deck between galley and saloon. · Master and VIP beds 200L x 160W. Master full width aft engine room. · Two twin guest cabins are situated aft on the lower deck · The starboard twin cabin shares a bathroom with the single guest cabin next door. (ideal for children with a nanny) · Right aft is a V-shaped twin cabin with a shower in the point of the V. · Aft cabin and single cabin beds 210L x 90W Twin singles between Master and single cabin; inner bed 190L x 90W outer beds 200L x 90W. · On the bridge deck there is the Owner's office, a day head and a dumbwaiter and pantry to service the bridge deck. · On the Portuguese deck there is a private seating area. · Captain's cabin, bridge deck, en-suite head · 1 x First officer single cabin below, en-suite head · Chief engineer single cabin, en-suite head · Stew cabin bunks, en-suite head · 2 x Deck hand cabin with shared head · Crew mess · Laundry area under crew mess

### **MECHANICAL EQUIPMENT**

**ENGINES** 2 x CAT D379 478kW/650 Hp  
**PROPULSION** Twin screw  
**STABILISERS** Vosper  
**GENERATORS** 1 x 90 kW Northern Lights 1 x 115 kW Northern Lights  
**EMERGENCY GENERATOR** 1 x 28 kW Kohler  
**AIR CONDITIONING** Condaria  
**WATER MAKER** Seafresh (10,000 litres/day)

### **NAVIGATION & COMMUNICATIONS EQUIPMENT**

**NAVIGATION DISPLAY** 2 x Raymarine C120 - 1 in bridge, 1 in crew mess  
**IT** Internet updating for charts - new 2013 LRIT Wifi throughout vessel - GSM  
**SATCOM** Thuraya SAT phone  
**DEPTH** Raymarine Depth, wind  
**SOUNDER/WIND**  
**NAVIGATION** Max sea navigation - 2011  
**VHF** 2 x ICOM VHF IC - M603 - New 2011  
**AUTO PILOT** Simrad Auto Pilot  
**RADARS** 2 x Furuno Navtex  
**NAVTEX RECEIVER** Furuno Navtex  
**GYRO GPS** Furuno  
**CENTRAL SHIP'S VIDEO** 1 x MAC hard drive

### **DECK EQUIPMENT**

**CHAINS** 3 x  
**SHACKLES** 6 x

<b>TOW ROPES</b>	2 x
<b>ROPES</b>	4 x Heaving lines 1 x 60m line 2 x 25m lines 3 x 21m lines 3 x 15 lines
<b>OTHER</b>	4 x Leather straps for chafing
<b>SIDE BOARDING LADDER</b>	Marquip ladder side boarding new
<b>POOL</b>	Flybridge deck Jacuzzi (8pers.) and sundeck bed with deck cushions, totally private.

**ENTERTAINMENT EQUIPMENT SALOON** · 1 x TV Sony DVD KDL-32EX408 · 1 x French Satellite Sagem · 1 x British Satellite SKY · 1 x Bose speaker · 1 x IPad · 1 x Yamaha

**MASTER CABIN** · 1 x TV LG 32LB1R · 1 x French Satellite Sagem · 1 x Bose speaker

**VIP CABIN** · 1 x TV LG 32LB1R · 1 x French Satellite Sagem · 1 x Bose speaker · 1 x DVD Player

**GALLEY & LAUNDRY EQUIPMENT GALLEY** Complete new galley range in 2013 · 1 x Gaggeau HLEB388 Oven · 1 x Miele Small Steam Oven · 1 x Miele induction stove · 1 x Small Liebherr KXZ10Z1 Fridge · 1 x Walk-in fridge · 1 x Miele Grill plancha · 2 x Liebherr bildge freezers · 1 x U-Line SS1015-NF marine ice-maker · 1 x Electrobar fast dishwasher

**LAUNDRY** · 2 x Miele washing machines new 2013 · 2 x Miele dryers in Laundry 2011 · 1 x Miele washing machine in Bosuns locker · 1 x Miele dryer in Bosuns locker

**CREW GALLEY** · 2 x Arcelik 1031T small fridges · 1 x Whirlpool compact microwave

**SAFETY & SECURITY EQUIPMENT** · Smoke alarms and heat alarms throughout vessel. · Novak system for engine room. · 28 x Fire extinguishers - various types

**TENDERS & WATERSPORTS EQUIPMENT TENDERS** · 1 x 5.8m RIB C/W 150HP Yamaha · 1 x 5.8m RIB C/W 90HP Mercury

**WATER SPORTS** · 1 x Seadoo 1300GTI Jetski · 2 x Kayaks · 2 x Paddle boards, new 2011 · 1 x Kneeboard · 2 x Water Skis · 1 x Mono Ski · 2 x Canoes · 1 x Laser, sails etc. · 3 x Wet suits · 1 x Jobe Tube (Doughnut) · 1 x J-Star Wakeboard · 6 x Helmets · 14 x Flippers · 8 x Snorkel and goggle sets · 1 x Jobe gloves · 15 x Bootie sets · 17 x Life vests assorted

**REFIT NOTES 2013 GALLEY** · Complete in wiring and breaker board · Completely new oven stove range

**ENGINE ROOM** · New decal markings · Back up black water tank pump installed · New ridge unit compressor installed · New Tools boxes installed · New Fuel transfer pump and Manifold installed · New Lighting · New main switch Board · New shelving system · Manned and maintained every day of the year

**OTHER**

Exterior paintwork	Continually maintained
Varnish	Continually maintained
Bosuns Locker	Complete paint job and organize shelves
Bridge	Replaced defective AC unit
Crew Mess	Replaced defective AC unit
Port Engine	Overhaul and new piston liners
Both Engines	Stage 1 exhaust system completed
Stbd Stabilizer	New rebuilt ram

Black water tank	New installation extraction fan
Port & STBD Windlass	New shafts installed
Windlass Electronics	New control package and power cable to ER

**2012**

Heat exchangers	Replaced faulty units for new proper units
Port Anchor	Replaced port anchor for proper size anchor
All Fuel tanks	Emptied and cleaned
All Fuel tanks	Replaced level indicators with proper sensors
Engine Room	Treated all Ballast areas for corrosion
Hull Plating STBD aft	Replaced 4 meter sq. hull plate
Stern Floors Steel	Replaced rusted stern steel floor
Stern Floors Steel	Added proper drainage for ballast area
Aft fuel fill pipes	Completely replaced
Tender Crane	Completely rebuilt
Acoustic Insulation	Installed throughout owner cabin
Black water system	Rebuilt complete system
Fresh water system	Complete new units
Anchor chain	Added 30m to each side
Grey / Black water tanks	Complete clean and new paint job
Engine Room Piping	New piping throughout for fire/bilge systems
Life Raft supports	New supports fitted properly
Crew Head and Showers	Completely rebuilt due to wood rot
Hull Gauge Test	Insurance
Eng. Gen Batteries	All replaced for new
Eng. Room Alarm System	New alarm system throughout
Both tenders	Complete service with Wake board poles added
Port Shaft Brackets	Complete New Brackets
New Port 115 kW genset	Old unit expired
Engine Room	Completed repainting
Engine Room	New deck plates
Sundeck & Main Deck	Rechalk faulty chalking
Windlass	Complete rebuild
Exterior paintwork	Continually maintained
Varnish	Continually maintained
Engine Room	Manned and maintained every day of the year
Washer Dryers	6 new units Miele
Painted bottom	Yes



**2011**

Stbd and Port shaft survey	5 year survey requirement
Fwd. Port Coupling shaft	Replaced due to crack
New radar	Fab base and install
New depth transducer	Fab mount and install
Port shaft alignment	Reduced vibration to acceptable level
Air Tank	Replaced and upgraded
Starters	Added 2 new quick starts to both Engines
Stbd Shaft	Replaced cutlass bearings
Aft transducer	Fab installed depth finder above props
Topsides	Crew Painted entire Topsides
Sundeck	Rechaulk faulty chalking
Bilge areas	Complete paint job
Exterior paintwork	Continually maintained
Varnish	Continually maintained
Engine Room	Manned and maintained every day of the year
Painted Bottom	Yes

**2010**

Shore power transformer	Replaced complete faulty unit
Bridge	Complete new Navigation package
Voltage regulator	Replaced complete faulty unit
Turbos	Rebuilt
Bilge Areas	Complete repaint job
Galley	New walk-in fridge & shelves
Exterior paintwork	Continually maintained
Varnish	Continually maintained
Engine Room	Manned and maintained every day of the year
Painted Bottom	Yes

**2009**

Both port & Stbd stabilisers	Refurbished both shafts
Both port & Stbd stabilisers	Removed and replaced both seals
Port Engine	Alignment Survey
Thrust bearing	Replaced port / Stbd aft sections
Replaced SAT TV dome	Yes
Replaced Hydr. reservoir tank	Bow thruster compartment
Rebuild sea water outlets	x 20
Replace all hot water pipes	Yes

Painted Bottom	Needs sandblasting
Replaced all Zincs	Done each time ship is dry
Replaced all SS numbers	Port and Stbd bow and stern
Clean 10 sea chest	Repaired any damaged parts
SAT TV Dome	Mounted
Replace insulation	Yes
Gauge test hull	All ok
Stack	Extended pipes to overhead outlet
ER Sprinkler system	Remove old defect system
Water pump	Remount properly
Gas locker	Added vents
Black water tank	Fab flange for quick connect
Teak base plates	4 plates for life rafts
Stability TEST	Yes
Steering compartment	Painted
Bottom paint	Professional survey of bottom paint
Sundeck	Rechaulk faulty chalking
Shore Power	New main cable run from stern to ER
Exterior paintwork	Continually maintained
Varnish	Continually maintained
Engine Room	Manned and maintained every day of the year

## Исключения

---

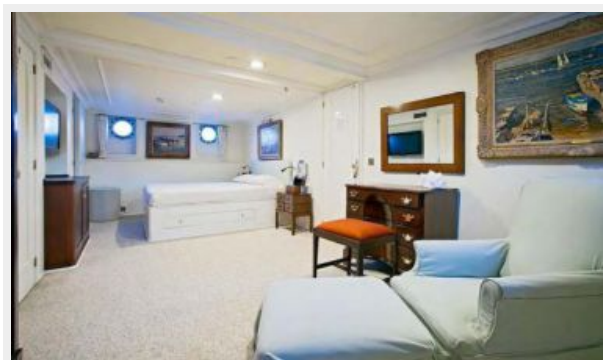
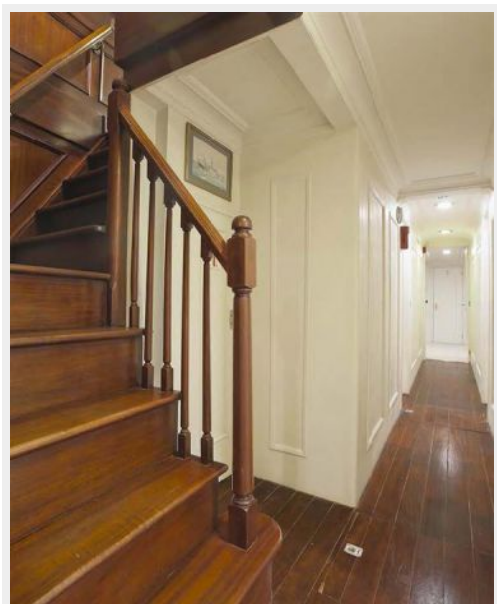
При продаже яхты исключаются личные вещи владельца.

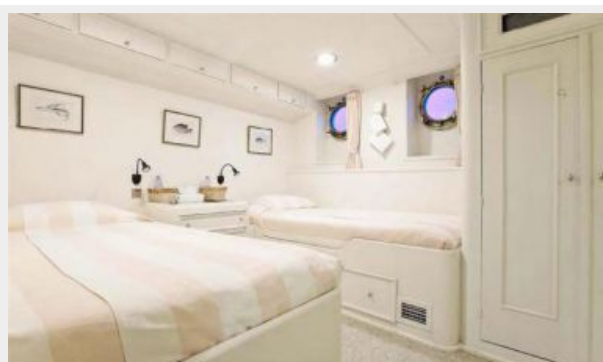
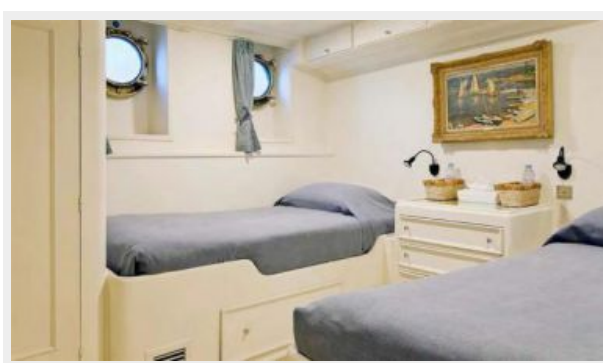
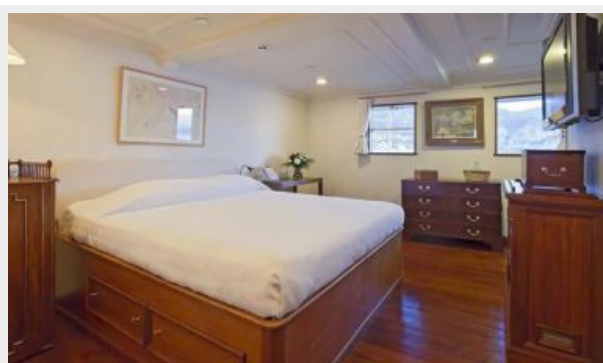
## Отказ от ответственности

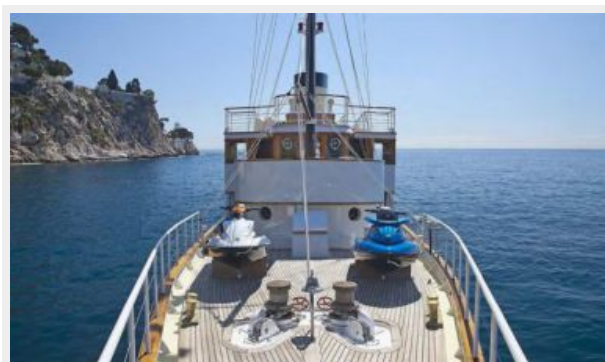
---

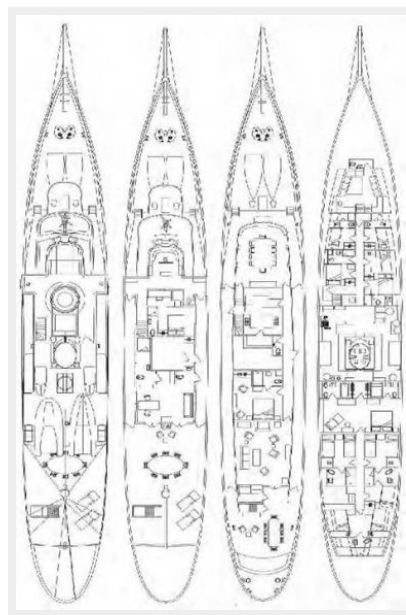
Компания предоставляет описание судна или яхты добросовестно, но не может гарантировать точность этой информации, а также не ручается за техническое состояние. Покупатель должен проинструктировать своих агентов или оценщиков исследовать представленную информацию более подробно, по собственному желанию. Продажа судна или яхты, изменение цены или снятие с продажи будет происходить без предварительного уведомления.

# ФОТОГРАФИИ









# КОНТАКТЫ

---

Андрей Шестаков (Andrey Shestakov) – ведущий яхтенный брокер отдела продаж яхт и судов компании Shestakov Yacht Sales Inc. Официальный представитель Shestakov Yacht Sales Inc. для русскоговорящих клиентов в центральном офисе компании в Майами/Форт Лодердейл/Флорида/США.

## Контактная информация

---

Email: [andrey@shestakovyachtsales.com](mailto:andrey@shestakovyachtsales.com)

Web: [shestakovyachtsales.com](http://shestakovyachtsales.com)

## Телефоны

---

Краснодарский край: **+7(918)465-66-44**

США, Майами, Флорида: **+1(954)274-4435**

## Время работы

---

Понедельник – Суббота: **9:00 - 21:00**  
EDT

Воскресенье: **Закрето**

## Адрес

---



Harbour Towne Marina, 850 NE 3rd St,  
STE 213, Dania, FL 33004