

METOLIUS — ROYAL HUISMAN



Судостроитель: ROYAL HUISMAN

Год постройки: 1992

Модель: Крейсерская яхта

Цена: **ЦЕНА ЯХТЫ ПО ЗАПРОСУ**

Местонахождение: Greece

Длина общая: 83' 8" (25.50m)

Ширина: 19' 9" (6.00m)

Мин. осадка: 11' 6" (3.50m)

Макс. осадка: 11' 6" (3.50m)

Крейс. скорость: 10 Kts. (12 MPH)

Макс. скорость: 11 Kts. (13 MPH)

Купить **METOLIUS — ROYAL HUISMAN** а также выбрать подходящую вам яхту из нашего каталога яхт вам поможет опытный яхтенный брокер Андрей Шестаков. На сегодняшний день компания **Shestakov Yacht Sales Inc.** имеет большое количество яхт в собственном списке продаж, а также тесно сотрудничает со всеми крупными яхтенными производителями по всему миру.

Для того чтобы купить яхту **METOLIUS — ROYAL HUISMAN** а также проконсультироваться по любому вопросу связанному с покупкой, продажей, чартером яхт позвоните по телефону **+7(918)465-66-44**.

ОГЛАВЛЕНИЕ

ОГЛАВЛЕНИЕ	2
ХАРАКТЕРИСТИКИ	4
Обзор	4
Основная информация	4
Размеры	4
Скорость, вместимость и масса	5
Размещение	5
Корпус и палуба	5
Информация о двигателе	5
ПОДРОБНОЕ ОПИСАНИЕ	6
FULL DESCRIPTION	6
Исключения	21
Отказ от ответственности	21
ФОТОГРАФИИ	23
sail	23
Metolius	23
sailing	23
Cruising	23
sailing, transom	24
saloon at night	24
saloon	24
saloon	24
guest upper/lower	24
guest	24
Owner cabin	25
Electric panel and engine	25
Pump room	25
Galley	25

Galley	25
Focsle	25
Bathroom detail	26
Plan of interior	26
КОНТАКТЫ	27
Контактная информация	27
Телефоны	27
Время работы	27
Адрес	27

ХАРАКТЕРИСТИКИ

Обзор

METOLIUS is a true offshore voyager, with an easily driven hull form and a powerful sail plan engineered to be easily managed by minimal crew. She has a Rondal rig with hydraulic furling mainsail, headstay and staysail; hydraulic winches, a functional, simple deck layout, and a comfortable, well protected cockpit.

Her interior designed by Peter Beeldsnijder, is detailed in varnished teak with an ambience that exudes elegant warmth with an uncanny functionality. The interior layout includes three staterooms, two heads with stall showers, separate crew quarters and head, and a superb workshop stowage area forward - all crafted to the highest Huisman standards. The overall arrangement is ideal for family living, offering absolute comfort and privacy in her functional cabins. With over 150,000 miles under her keel, she has always had the benefit of exceptional preventative maintenance, and major refits in 2001, 2005, 2008, 2011 and 2012 with a comprehensive engine rebuild in 2013 and new hull paint in 2014! Simply stated, she's ready to go and quite stunning!

Основная информация

Тип судна: Крейсерская яхта

Модельный год: 1992

Год постройки: 1992

Страна: Greece

Размеры

Длина общая: 83' 8" (25.50m)

Длина по ватерлинии: 0' 0" (0.00m)

Длина палубы: 0' 0" (0.00m)

Ширина: 19' 9" (6.00m)

Мин. осадка: 11' 6" (3.50m)

Макс. осадка: 11' 6" (3.50m)

Трапы: 0' 0" (0.00m)

Длина привального бруса: 0' 0" (0.00m)

Скорость, вместимость и масса

Крейс. скорость: 10 Kts. (12 MPH)

Дальность на крейсерской скорости:
2200

Макс. скорость: 11 Kts. (13 MPH)

Водоизмещение: 132000 Pounds

Вместимость воды: 396.258078 Gallons

Вместимость сточного бака: 52.8344104
Gallons

Объем топливного бака: 792.516156
Gallons

Размещение

Всего кают: 3

Всего коек: 5

Спальные места: 6

Всего ком. состава: 2

Каюты экипажа: 1

Койки экипажа: 2

Спальных мест экипажа: 2

Комм. состав экипажа: 1

Корпус и палуба

Материал корпуса: Aluminum

Дизайнер корпуса: German Frers

Дизайнер интерьера: Peter Beeldsnijder

Информация о двигателе

Двигатели: 1

Производитель: MERCEDES

Модель: MTU

Тип топлива: Diesel

ПОДРОБНОЕ ОПИСАНИЕ

FULL DESCRIPTION

VESSEL OVERVIEW

, is detailed in varnished teak with an ambiance that exudes elegant warmth with an uncanny functionality. The interior layout includes three staterooms, two heads with stall showers, separate crew quarters and head, and a superb work-shop stowage area forward - all crafted to the highest Huisman standards. With over 150,000 miles under her keel,

COMMENTS

ACCOMMODATION

The MAIN SALON aboard METOLIUS is very large with an open plan that enhances the sense of spaciousness. The teak inlaid dining table and “L” shaped settee area are to starboard, with two custom dining seats inboard. Outboard to port is a large and comfortable sofa, facing a hi/low cocktail/game table which, in the lower position, secures two custom teak stools. Aft in this area is another custom swivel seat. The main salon is truly a comfortable family living room.

The NAVIGATION STATION adjoins the salon aft to port, with a bench seat that allows the navigator to face forward or aft. The aft area houses the electronics and communications equipment, with a workspace below. The radar and computer are outboard, adjacent to a two-tier bookshelf, plus valence bookshelf above. When facing forward, the navigator sits at a large chart table/office desk, which offers chart storage, filing cabinets and additional storage drawers inboard.

Immediately to starboard of the companionway is a GUEST STATEROOM, with upper and lower single berths and ample storage in drawers, cabinets and a large hanging locker.

Adjoining the main salon, forward to starboard is the well-appointed GALLEY, which has an abundance of cabinet and counter space, beautifully detailed. Refrigeration is a custom fabricated RHS cold bank refrigerator and freezer system, with refrigerator in the galley, drinks refrigeration in the adjoining area of the salon and a separate deep freeze forward. The propane stove is a Huisman modified Alpes Mariner, with solenoid shut off and gas alarm. In addition, there are deep ss sinks, custom fixtures, a Miele microwave oven and abundant storage space. There are clever details like sliding locker unit allowing easy access to engine space that is

positioned centrally.

The OWNER's STATEROOM is forward to starboard, with a double berth, ample stowage in drawers and lockers, writing desk and foldaway seat, and an ensuite head with stall shower.

The SECOND GUEST STATEROOM is forward of the salon to port, also with two good size upper and lower single berths, plenty of stowage and an opening hatch to the mid deck. The GUEST HEAD / day head is aft of the stateroom and complete with a full stall shower.

CREW QUARTERS for two, are forward to port, with upper and lower single berths and ample stowage in lockers and drawers, and an ensuite head and shower compartment that is to starboard. Crew have their own access to deck through the fore hatch in the fo'c'sle workshop.

The engine is on centreline, between the galley and pump room and cleverly installed below a lead sound-shielded teak engine cover that retracts electrically.

Outboard to port, forward of the salon is a full pump room, where much of the engineering and mechanical equipment aboard is installed, along with the 100-litre diesel day tank.

Behind a hatch, aft at the companionway, is a full wet locker, with access to additional machinery further aft.

DECK LAYOUT

The deck layout aboard METOLIUS was engineered with safety, seamanship and ease of sail handling as primary requirements.

The aft cockpit is deep and well protected by the sprayhood / dodger, with seating port and starboard, as well as aft of the 70" SS destroyer wheel. The binnacle houses both the steering compass as well as the external VHF handset.

Lifting the cockpit seats provides access to general storage areas, generally used for safety equipment.

There is a custom teak dining table that fits in the cockpit sole, which can be in place while sailing. Removable foot braces fit in both cockpits.

Running backstay winches are fitted on the cockpit coaming, within easy reach of the helmsman.

The engine control panel is to starboard with two deck mounted foot switches for the bow thruster.

To port of the helm is a panel for the deck lights and a Simrad autopilot control unit.

The control panel for the Rondal rig hydraulics (backstay and vang) is also to port, just forward of the helm.

A well-protected working cockpit aft of the mast has Lewmar 1100 SST/hydraulic primary winches and Lewmar 900 SST/hydraulic secondary winches. Just forward of the cockpit are two Lewmar 650ST (one 3 speed) winches for handling the mainsail.

Just aft of the mast, there is a grouping of 3 x Rondal stainless steel SW 2000, and 2 x Lewmar 650 SST/hydraulic winches that operate all halyards. Also, in this area are two Lewmar 460 AST winches on the mast.

This working / crew cockpit also has a teak table and cushions for dining / relaxing when at rest.

Immediately aft of this cockpit are four flush mounted hatches with four sensibly sized Dorade vents, protected by stainless steel grab rails. The stainless-steel traveller is located just forward of the dodger, well positioned for proper leverage for the main sheet, while keeping the sheet clear of both cockpits.

Stainless genoa and staysail tracks are mounted on the deck.

The clean foredeck has a low bulwark that affords protection with the only protrusions being the Steen windlass and a Dorade vent immediately forward of the inner forestay.

To starboard of the foredeck hatch are two, in deck storage lockers with flush, teak laid hatches, one for the outboard engines and fuel tanks, the other for two aluminium propane tanks. The outboard locker has a bilge pump and extractor fan; the gas locker drains directly overboard.

The recessed foredeck hatch is sealed by a compressed air activated gasket and immediately aft of this are two recessed hatches.

MACHINERY

Main Engine

Mercedes MTU 200 hp inline, six cylinder, naturally aspirated marine diesel. W 5 overhaul by Certified MTU Technicians, **USA 2019**, and services since as per schedule.

Engine Hours: 12,200 (February 2020)

Speed: 10 Knots cruising /11 Knots Top Speed.

Range : 2,200 NM.

Auxiliary PTO

Continuous hydraulic PTO generates power to supply the bow thruster,

Water-maker and refrigeration systems.

Belt driven Steimel water pump for engine raw water circulation and

emergency bilge pumping.

Propeller Shaft

Hundested two-piece shaft with flexible coupling.

Hollex drip free stern seal and P bracket with water lubricated cutlass bearing. Cutlass bearing and PSS stern gland replaced in **2020**.

Propeller

Hundested 3 blade 900 mm variable pitch propeller, adjusted by electric Motor.

Engine room: Air extractor, serviced **2019**

ELECTRICAL SYSTEMS

Generator

Northern Lights Lugger 20 KWH, 2005, fully serviced **2019**.

New alternator & new stop solenoid 2019. Rebuilt raw water pump **2020**.

Generator hours; 5340 (January 2020).

Electricity

230 V 50 Hz single-phase three-wire system powered by diesel generator or shore power. Two DC/AC inverters generate a continuous supply of AC power to the appliances and outlets.

Shore Power

220V / 50 Hz or 110V / 60 Hz input via shore power isolation transformer.

Inverter

2x Victron Energy Multiplus DC/AC inverters; 24V, 3000 VA, 70 AMP, 2010.

Batteries

2x Sonnenschein AGM 12V 140 ah main engine start batteries, 2013.

2x Tudor Maintenance free 12V 135 ah generator start batteries, 2013.

12x Mastervolt MVSV 1650, 1650 ah, 2V, deep cycle gel cell service Batteries, 2009.

2x Victron Skylla – TG 24V 100-amp service battery chargers.

Custom Ricom battery monitoring system with panel readout and alarms.

Emergency link switch between main engine and generator start batteries.

Earth fault detection circuit on each battery bank.

Interior lights

Interior lights changed to LED in **2019**

SHIP'S SYSTEMS

Bow Thruster

Hundested 35 hp hydraulic retractable bow thruster.

Steering system

Single destroyer type wheel with 1800 mm diameter linked to rudder by 1” stainless steel chain and 7 X19 wire steering cables.

Gear ratio of 2:5:1 and swing of 35 degrees port and starboard.

Hydraulic clutch disengages wheel when autopilot is engaged.

Rudder

Foil shape spade rudder, shaped on aluminium frames with aluminium skins and solid aluminium rudder stock.

Twin rudder bearings are lubricated by grease fittings. Bearings replaced **2020**.

Fuel Filters

Racor 2010 series; 2 x Engine filters in Duplex arrangement.

1 x Generator filter.

Fire/Anchor Wash Pump

Spec BADU 40-15 seawater pump with two deck hydrants.

Bilge Pump

1 x G+R MV64. One additional rebuilt spare aboard in reserve.

Emergency Bilge Pump

Steimel water pump belt driven from main engine.

Sewage Treatment

200 Litre holding tank.

Electrical overboard pump with thru hull isolation valve.

Medium & high-level alarms.

Waste Pump

2 x G+R ECO MV44 to discharge black and grey tanks. Both rebuilt in 2013.

A rebuilt spare pump is kept onboard. Holding + sump tanks cleaned **2020**.

Heads

3 x Altena Waterflash electric toilets with freshwater flush.

Forward head has option for saltwater feed.

Water Maker

HEM series 20, 5,500 litres per day.

Full check and overhaul **2020** including new membranes

Air Conditioning

2x Marine Air Systems, 2005.

1x Free standing units in forepeak and master cabin.

1x Indirect chilled water loop system in salon.

Heating

Heating throughout the boat is provided by four independent sources.

A hot water circulation system delivers heat to air handlers with independent temperature control in each cabin and the salon.

Heat sources;

1x Webasto diesel fired system;

1x 220v immersion heater;

1x engine jacket water cooling system.

Furthermore, the three air conditioning units can be operated on reverse cycle delivering heat to the salon, master cabin and forepeak.

Note: Air-conditioning and heating systems checked, serviced and overhauled 2020, including fan coils.

Refrigeration

Engine driven system (serviced 2020)

220v system (check + service 2020)

ENTERTAINMENT SYSTEMS

Audio System

Fusion hi-fi with speaker system in main salon.

Apple iTunes, airplay and Apple TV connected to this system.

Apple TV. New LG Smart TV **2019**.

Satellite Television

Seatel TVatSea, 18" dome with Sky (UK) & DTV (USA) decoders.

Video Recorders & Players:

DVD player and 5.1 surround sound.

Entertainment

Apple Mac mini with connection to TV and Wi-Fi.

Internet

Wave Wi-Fi rogue antenna connected to internal Wi-Fi network with 3x Apple airport express serving salon and cabins.

COMMUNICATION EQUIPMENT

Satcom

Sailor Satcom C with data connection.

VHF

Simrad R582 with second cockpit handset and data connection.

SSB

ICOM IC-M802 with removable antenna, 2011.

Satellite phone

Inmarsat Fleet One new **2019**

OFFICE EQUIPMENT

Computer

Mini Mac. New PC display **2019**.

PC display

New 2019 in sliding cupboard at chart table

Printer/Scanner/Fax

HP HENVY 250 with wireless printing.

NAVIGATION EQUIPMENT

Sailing Instruments

Brookes & Gatehouse Hydra

2000 system with comprehensive 20/20 layout.

9x displays on deck in steering and sailing cockpits. (4) in navigation area,

4x Hercules 690 multi display being one in each cabin.

AIS

Furuno FA-150 Universal AIS transceiver with NMEA output, 2005

Radars + Chartplotter

1x Furuno NavNet Vx2 chart plotter / radar display in custom cabinet in navigation area. Mast mounted 24" closed array.

GPS

2x Magnavox MX200gps **due to be replaced, by Buyer.**

Navtex

Navtex Nav6 electronic display **not working, due to be replaced, by Buyer.**

Autopilot

2x Simrad AP26 control heads including separate processors and control panels, for redundancy.

Segatronic hydraulic power pack with (2) RexRoth rams.

Hydraulic pump will be overhauled **2020.**

Gyro Compass

B + G Super Halcyon III.

Magnetic Compass

Danforth Constellation, 150 mm diameter backlit steering compass in binnacle

Navigation Software

New TimeZero Professional software **2019**, with collection of digital charts: Mediterranean, USA.

Computer

HP PC with LCD colour monitor running Windows 8 with full NMEA input from AIS, B&G, GPS, etc. This computer also is used to access the Fleet 33 and Satcom-C data connections.

Barometer

2x barometers; 1x electronic weather station with exterior probe, 1x Schatz hermetic type with matching ship's clock.

MAST, RIGGING AND SAIL HANDLING

Mast

Triple spreader Rondal Hydrofurl aluminium mast and boom.

Navtec rod standing rigging (**2020**)

Hydrofurl headstay & staysail stay.

Boom

Rondal, aluminium with integrated boom preventer.

Rigging Hydraulics

Rondal type 90 hydraulic boom vang and backstay adjuster with two-function Panel **serviced 2019**.

Bowsprit

Removable, un-stayed 2m carbon bowsprit for Asymmetric spinnaker. **Winches**

10 x Lewmar hydraulic deck winches, with custom DC power packs.

Halyards

(Genoa, staysail, mainsail, spinnaker, main outhaul) **New 2019**

Rig measurements

I = 31.5m, P = 28.8m, E = 9.4m, J = 9.1m

Note: Mast unstepped December **2019** for full service, new rigging, overhaul and repaint. First

section of main furler foil replaced **2019**.

Sails

Genoa

Evolution Sails Membranes sails in Carbon/Technora, New **2019**

Staysail

Evolution Sails Membranes sails in Carbon/Technora, New **2019**

Mainsail

North 2005 Spectra / carbon

Genoa 120%

North 2005 Spectra / carbon

Asymmetrical Spinnaker MPS

North 2005 Code 2A, Norlan 75

Storm Staysail

North Sails

Storm Jib

North Sails

(Note: The Main is in fair condition. The 120% Genoa is below average condition as well is the MPS.)

DECK EQUIPMENT

Anchor Windlass

Steen Type 23.06 horizontal windlass with chain gypsy and warping drum driven by 24V DC motor with foot switches & remote. Overhauled **2020**.

Anchor & Chain

CQR 180 lb Galvanized anchor on bow roller.

130M galvanized anchor chain.

1x 100m/22mm nylon anchor rode with 10m/13mm chain.

2x folding aluminium Fortress anchors.

Passarelle

Custom built folding carbon with handrail and case.

Boarding Ladder

Custom Besenzoni aluminium and teak boarding ladder with submersible extension for swimming. Attaches port and starboard amidships.

Deck Cushions

2x sets of Sunbrella covers for cockpit cushions, for both steering & sailing cockpits.

Docking

New **2019** fenders with covers.

Dock lines.

Canvas

Aft cockpit dodger / spray hood, new**2019**.

Bimini and frame for aft cockpit. Sun Awning.

TENDER AND WATERSPORTS

Tender

Achilles SU Heavy Duty, with foldable aluminium floorboards, 4.25m, new **2019**.

Outboard Engine

Honda 20hp 4 stroke (2012), full service and overhaul **2019**.

Diving Equipment

Bauer Varius dive compressor, 220V, **serviced 2019**.

SAFETY AND SECURITY EQUIPMENT

Safety

New life jackets, **2019**

2 x new 6-person life rafts **2019**

Jon-Buoy MK4, man overboard module, **serviced 2019**.

New EPIRB **2019**.

Fire Fighting

Thorn FM 2000 CO2 semi-automatic fire fighting systems for engine and generator spaces – **serviced 2019**.

CO2 fire extinguishers in each cabin space, **serviced 2019**.

BADU 40-15 seawater fire pump / deck wash with two deck outlets.

Fire blanket in galley

Firefighting automatic system appliances **serviced in 2019**.

HISTORY

Under her first ownership, the owner and family cruised over 90,000 miles aboard – at a combined average speed of over 9 knots!

Under her second ownership, METOLIUS cruised from Alaska to both sides of the Atlantic, throughout the Caribbean, Northern Europe and Scotland, to the Mediterranean.

In 2015 she was then passed to a sailing foundation in the USA. Based in Baltimore area she was sailed locally in the summer periods.

In 2018 the present owners acquired her, undertook a general overhaul and upgrade and enjoyed her summer 2019. Further upgrades including full rigging replacement and mast overhaul are in hand January 2020.

METOLIUS will be ready in all respects to continue her remarkable voyaging legacy.

MAINTENANCE

Works 2020 in Greece

Rig: Mast out, dismantle, new rod rigging, all parts checked and service as required. Paint of mast and boom.

Machinery: Service main engine and gen set as per schedule and checks

Tanks: Clean fuel tanks. Clean and check water tanks. Clean and check holding and sump tanks.

Water-maker: service high pressure pump, check and service all including membranes.

Refrigeration: check and service engine driven and 220v systems.

Interior: Varnish and paint work throughout as required (floorboards, forepeak, companionway, shower floors, etc.)

Underwater: Replace rudder bearings. Replace cutlass bearing. Antifouling. Renew name on stern. Topsides polish. Propeller service and apply PropSpeed.

Deck areas: reseal side windows. Various paint touch ups. Overhaul windlass and refurbish anchor locker.

Ventilation: service and clean fan coils. Check all systems and overhaul air-conditioning units, water-pumps and hoses. Service the Webasto and check exhaust piping.

Maintenance and Upgrades 2019

New dinghy.

New Genoa and Staysail.

New halyards.

Service of vang and backstay hydraulics.

New TV.

New TimeZero Professional software.

New sat phone.

New PC display

New liferafts (2)

New lifejackets

New EPIRB

Service Jonbuoy

New LED lighting inside.

New sprayhood / dodger.

New fenders and socks.

W5 service to main engine.

Overhaul of gen set.

Service air compressor.

Service fire fighting systems.

Исключения

При продаже яхты исключаются личные вещи владельца.

Отказ от ответственности

Компания предоставляет описание судна или яхты добросовестно, но не может гарантировать точность этой информации, а также не ручается за техническое состояние. Покупатель должен проинструктировать своих агентов или оценщиков

исследовать представленную информацию более подробно, по собственному желанию. Продажа судна или яхты, изменение цены или снятие с продажи будет происходить без предварительного уведомления.

ФОТОГРАФИИ

Metolius



sail



Cruising



sailing



sailing, transom



saloon at night



saloon



saloon



guest upper/lower



guest



Owner cabin



Electric panel and engine



Pump room



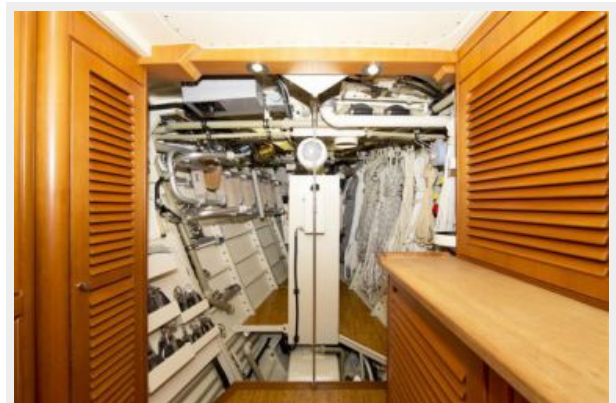
Galley



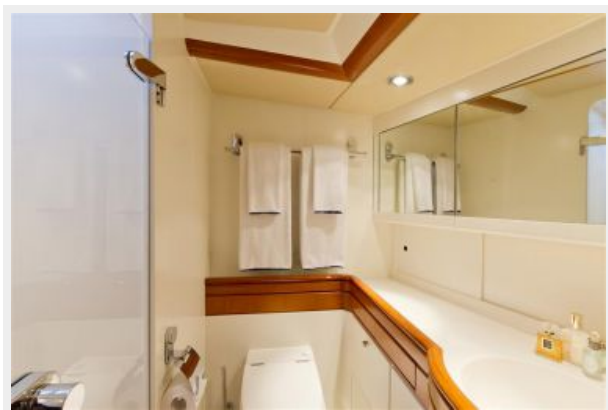
Galley



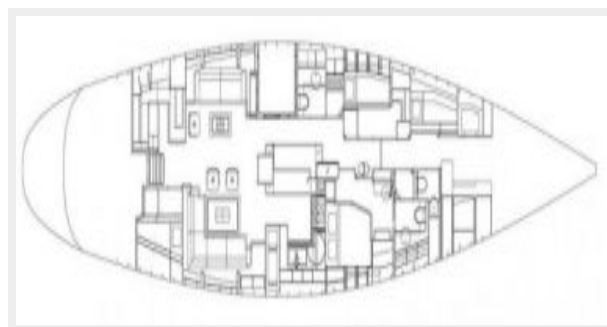
Focsle



Bathroom detail



Plan of interior



КОНТАКТЫ

Андрей Шестаков (Andrey Shestakov) – ведущий яхтенный брокер отдела продаж яхт и судов компании Shestakov Yacht Sales Inc. Официальный представитель Shestakov Yacht Sales Inc. для русскоговорящих клиентов в центральном офисе компании в Майами/Форт Лодердейл/Флорида/США.

Контактная информация

Email: andrey@shestakovyachtsales.com

Web: shestakovyachtsales.com

Телефоны

Краснодарский край: **+7(918)465-66-44**

США, Майами, Флорида: **+1(954)274-4435**

Время работы

Понедельник – Суббота: **9:00 - 21:00**
EDT

Воскресенье: **Закрето**

Адрес



Harbour Towne Marina, 850 NE 3rd St,
STE 213, Dania, FL 33004