

SAGA — PROUT



Builder: PROUT

Year Built: 2005

Model: Catamaran

Price: PRICE ON APPLICATION

Location: United States

LOA: 36' 0" (10.97m)

Beam: 18' 0" (5.49m)

Max Draft: 3' 2" (0.97m)

Our experienced yacht broker, Andrey Shestakov, will help you choose and buy a yacht that best suits your needs **Saga — PROUT** from our catalogue. Presently, at Shestakov Yacht Sales Inc., we have a wide variety of yachts available on our sale's list. We also work in close contact with all the big yacht manufacturers from all over the world.

If you would like to buy a yacht **Saga — PROUT** or would like help answering any questions concerning purchasing, selling or chartering a yacht, please call **+1(954)274-4435**

TABLE OF CONTENTS

TABLE OF CONTENTS	2
SPECIFICATIONS	3
Overview	3
Basic Information	5
Dimensions	5
Accommodations	5
Hull and Deck Information	5
Engine Information	5
PHOTOS	6
CONTACTS	14
Contact details	14
Telephones	14
Office hours	14
Address	14

SPECIFICATIONS

Overview

36' Prout 3600 Esprit *New Arrival*

- Boat Name: SAGA
- Year: 2005
- **Current Price: US\$ 189,000** (12/14)
- Located in Sarasota, FL
- Hull Material: Fiberglass
- Engine/Fuel Type: Twin diesel
- YW# 64991-2793922
- Central/Exclusive Listing
- Available for co-brokerage

Additional Specs, Equipment and Information: **Boat Name** SAGA **Specs** Hull Shape: Catamaran **Dimensions** LOA: 36 ft 0 in Beam: 18 ft 0 in LWL: 34 ft 6 in Maximum Draft: 3 ft 2 in Displacement: 11500 lbs Bridge Clearance: 49 ft 5 in **Engines** Engine 1: Engine Brand: Volvo Year Built: 2005 Engine Model: MD2020 Engine Type: Inboard Engine/Fuel Type: Diesel Location: Starboard Engine Hours: 1595 Drive Type: Sail drive Engine Power: 20 HP Engine 2: Engine Brand: Volvo Year Built: 2005 Engine Model: MD2020 Engine Type: Inboard Engine/Fuel Type: Diesel Location: Port Engine Hours: 1595 Drive Type: Sail drive Engine Power: 20 HP **Tanks** Fresh Water Tanks: (80 Gallons) Fuel Tanks: (50 Gallons) Holding Tanks: (24 Gallons) **Accommodations** Number of double berths: 3 Number of heads: 1 **Electrical Equipment** Electrical Circuit: 110V **Outside Equipment/Extras** Total Liferaft Capacity: 8 Electric windlass

Accommodations

The Prout Esprit 3600 offers six berths in 3 staterooms with maximum headroom of 8 feet. There is a large central owner's cabin forward, accessible from the starboard hull, across the two hulls with a double berth, hanging locker and ample storage. The cabin has a hanging locker with a seat to starboard and lots of storage space. Aft of the owner's cabin in the starboard float is the long galley with three burner gas stove / oven. Triple sinks with hot and cold pressurized water heated from the water heater and the engine. There is a large 12V fridge /freezer. The galley has a lot of storage, ventilation and is very light and airy yet secure when at sea. Aft of the galley is another double cabin with lots of storage space and is again very light and airy. An identical cabin can be found in the Port aft hull. Forward from the port aft cabin is the chart table which again has lost of storage space for charts and a large display area for navigation instruments and tools. Forward in the Port hull is a large head with hot and cold shower, sink and marine vacuum head with lots of storage. In the bow is a hanging wet locker/additional storage area. The saloon area which expands across the two hulls is extremely light and airy because of the large overhead windows within the deck. It has a large U shaped settee and a luxury salon table.

Salon table removable to cockpit **16,000 BTU CruiseAir A/C (2011)** 7 fans throughout boat TV/DVD

Galley

Molded FRP countertops with Triple Sink Frigiboat S/S 12v Refrigerator /freezer Top Load Ice Box, (fwd starboard) Force-10 2 burner LPG stove with 12V solenoid valve GE Microwave Ice Maker

Deck

Bottom paint 9/2013 Bow pulpit **Simpson Lawrence electric windlass with foot switches and helm remote** 30lb Delta Fast-Set anchor with 40' chain and 200' rode Swim Ladder Bow seats Cockpit H&C shower Cockpit cooler with wood table top Huge Lazzaretto, large enough to hold a generator **All ports, hatches and windows pulled and re-bedded 2013** 2 folding, portable seat backs Switlik 8 man raft Life Sling Coast Guard safety package **New Props 2013**

Electrical

Xantrex PS 2000W Inverter with multi stage charger Xantrex Link 10 Battery Monitor 4 batteries Cable TV inlet 30 AMP Shore service with 2 50' cords and pigtail **Most interior / exterior lights converted to LED 2012**

Electronics

Raymarine E-70 Hybrid Touch Color Plotter with 40 mile HD Radar (New 2012)
Raymarine ST-60 Depth Raymarine ST-60 Speed Log Raymarine ST-60 Wind
Raymarine ST6001 Auto Pilot ICOM IC M402 VHF with helm remote mic Sony AM/FM/CD Player Sirius Radio Ritchie Compass

Sails & Rigging

All sails in good shape with UV protection

150% Geneoa 225% Skreecher Seldon in-mast furling main sail Seldon Rodkicker Vang Furling lines new 2014 All rigging shrouds with Stalock terminals Seldon whisker pole Sheets & halyards replaced 2012 All lines lead aft to a Lewmar #40 Electric Winch Genoa lines lead to twin Lewmar #44's Heavy duty bridal for anchoring or mooring

All furlers are over-sized Furlex (Skreecher furler just overhauled 11/14)

Mechanical / Engine Room

Twin Volvo MD2020 diesels mounted under both aft berths, serviced every 50 hours

Hoses, clamps replaced 2012, Heat exchangers / coolers cleaned 2014. Receipts available. Saildrives Racor 500 FG fuel filters Emergency Tiller **Cruiseair 16,000 BTU reverse cycle A/C (2011)** 2 Auto bilge pumps 2 manual bilge pumps **New Props 2012** Numerous spares **Vacuflush head Upgraded 24 gallon holding tank (9/13)**

Basic Information

Category: Catamaran

Model Year: 2005

Year Built: 2005

Country: United States

Dimensions

LOA: 36' 0" (10.97m)

Beam: 18' 0" (5.49m)

Max Draft: 3' 2" (0.97m)

Clearance: 49' 5" (15.06m)

Accommodations

Total Cabins: 3

Hull and Deck Information

Hull Material: Fiberglass

Engine Information

Engines: 2

Manufacturer: Volvo

Model: MD2020

Engine Type: Inboard

Fuel Type: Diesel

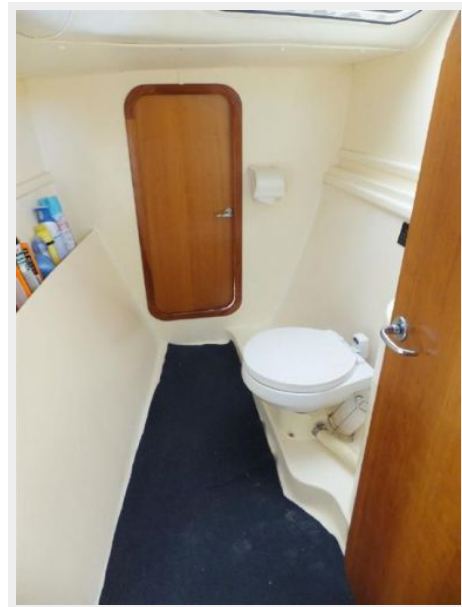
PHOTOS





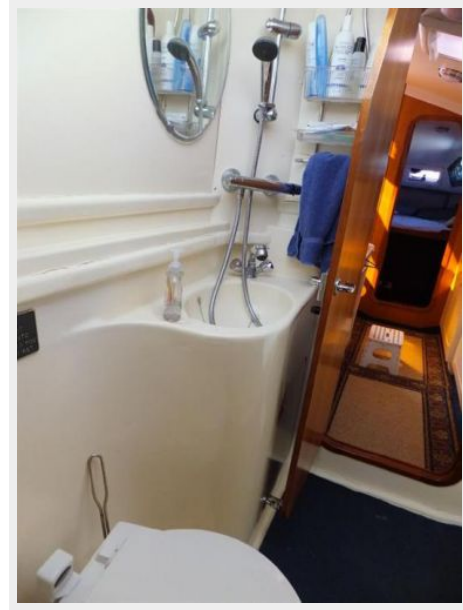












CONTACTS

Andrey Shestakov, leading yacht broker of the sales department of Shestakov Yacht Sales Inc. Shestakov Yacht Sales Inc., the official representative of the Miami/Fort Lauderdale FL headquarters.

Contact details

Email: andrey@shestakovyachtsales.com

Web: shestakovyachtsales.com/en/

Telephones

USA: +1(954)274-4435

Office hours

Monday – Saturday: **9:00 - 21:00** EDT

Sunday: **closed**

Address



Harbour Towne Marina, 850 NE 3rd St,
STE 213, Dania, FL 33004