

SAGA — PROUT



Судостроитель: PROUT

Год постройки: 2005

Модель: Катамаран

Цена: ЦЕНА ЯХТЫ ПО ЗАПРОСУ

Местонахождение: United States

Длина общая: 36' 0" (10.97m)

Ширина: 18' 0" (5.49m)

Макс. осадка: 3' 2" (0.97m)

Купить **Saga — PROUT** а также выбрать подходящую вам яхту из нашего каталога яхт вам поможет опытный яхтенный брокер Андрей Шестаков. На сегодняшний день компания **Shestakov Yacht Sales Inc.** имеет большое количество яхт в собственном списке продаж, а также тесно сотрудничает со всеми крупными яхтенными производителями по всему миру.

Для того чтобы купить яхту **Saga — PROUT** а также проконсультироваться по любому вопросу связанному с покупкой, продажей, чартером яхт позвоните по телефону **+7(918)465-66-44**.

ОГЛАВЛЕНИЕ

ОГЛАВЛЕНИЕ	2
ХАРАКТЕРИСТИКИ	3
Обзор	3
Основная информация	5
Размеры	5
Размещение	5
Корпус и палуба	5
Информация о двигателе	5
ФОТОГРАФИИ	6
КОНТАКТЫ	14
Контактная информация	14
Телефоны	14
Время работы	14
Адрес	14

ХАРАКТЕРИСТИКИ

Обзор

36' Prout 3600 Esprit *New Arrival*

- Boat Name: SAGA
- Year: 2005
- **Current Price: US\$ 189,000** (12/14)
- Located in Sarasota, FL
- Hull Material: Fiberglass
- Engine/Fuel Type: Twin diesel
- YW# 64991-2793922
- Central/Exclusive Listing
- Available for co-brokerage

Additional Specs, Equipment and Information: **Boat Name** SAGA **Specs** Hull Shape: Catamaran **Dimensions** LOA: 36 ft 0 in Beam: 18 ft 0 in LWL: 34 ft 6 in Maximum Draft: 3 ft 2 in Displacement: 11500 lbs Bridge Clearance: 49 ft 5 in **Engines** Engine 1: Engine Brand: Volvo Year Built: 2005 Engine Model: MD2020 Engine Type: Inboard Engine/Fuel Type: Diesel Location: Starboard Engine Hours: 1595 Drive Type: Sail drive Engine Power: 20 HP Engine 2: Engine Brand: Volvo Year Built: 2005 Engine Model: MD2020 Engine Type: Inboard Engine/Fuel Type: Diesel Location: Port Engine Hours: 1595 Drive Type: Sail drive Engine Power: 20 HP **Tanks** Fresh Water Tanks: (80 Gallons) Fuel Tanks: (50 Gallons) Holding Tanks: (24 Gallons) **Accommodations** Number of double berths: 3 Number of heads: 1 **Electrical Equipment** Electrical Circuit: 110V **Outside Equipment/Extras** Total Liferaft Capacity: 8 Electric windlass

Accommodations

The Prout Esprit 3600 offers six berths in 3 staterooms with maximum headroom of 8 feet. There is a large central owner's cabin forward, accessible from the starboard hull, across the two hulls with a double berth, hanging locker and ample storage. The cabin has a hanging locker with a seat to starboard and lots of storage space. Aft of the owner's cabin in the starboard float is the long galley with three burner gas stove / oven. Triple sinks with hot and cold pressurized water heated from the water heater and the engine. There is a large 12V fridge /freezer. The galley has a lot of storage, ventilation and is very light and airy yet secure when at sea. Aft of the galley is another double cabin with lots of storage space and is again very light and airy. An identical cabin can be found in the Port aft hull. Forward from the port aft cabin is the chart table which again has lost of storage space for charts and a large display area for navigation instruments and tools. Forward in the Port hull is a large head with hot and cold shower, sink and marine vacuum head with lots of storage. In the bow is a hanging wet locker/additional storage area. The saloon area which expands across the two hulls is extremely light and airy because of the large overhead windows within the deck. It has a large U shaped settee and a luxury salon table.

Salon table removable to cockpit **16,000 BTU CruiseAir A/C (2011)** 7 fans throughout boat TV/DVD

Galley

Molded FRP countertops with Triple Sink Frigiboat S/S 12v Refrigerator /freezer Top Load Ice Box, (fwd starboard) Force-10 2 burner LPG stove with 12V solenoid valve GE Microwave Ice Maker

Deck

Bottom paint 9/2013 Bow pulpit **Simpson Lawrence electric windlass with foot switches and helm remote** 30lb Delta Fast-Set anchor with 40' chain and 200' rode Swim Ladder Bow seats Cockpit H&C shower Cockpit cooler with wood table top Huge Lazzaretto, large enough to hold a generator **All ports, hatches and windows pulled and re-bedded 2013** 2 folding, portable seat backs Switlik 8 man raft Life Sling Coast Guard safety package **New Props 2013**

Electrical

Xantrex PS 2000W Inverter with multi stage charger Xantrex Link 10 Battery Monitor 4 batteries Cable TV inlet 30 AMP Shore service with 2 50' cords and pigtail **Most interior / exterior lights converted to LED 2012**

Electronics

Raymarine E-70 Hybrid Touch Color Plotter with 40 mile HD Radar (New 2012)

Raymarine ST-60 Depth Raymarine ST-60 Speed Log Raymarine ST-60 Wind

Raymarine ST6001 Auto Pilot ICOM IC M402 VHF with helm remote mic Sony AM/FM/CD Player Sirius Radio Ritchie Compass

Sails & Rigging

All sails in good shape with UV protection

150% Geneoa 225% Skreecher Seldon in-mast furling main sail Seldon Rodkicker Vang Furling lines new 2014 All rigging shrouds with Stalock terminals Seldon whisker pole Sheets & halyards replaced 2012 All lines lead aft to a Lewmar #40 Electric Winch Genoa lines lead to twin Lewmar #44's Heavy duty bridal for anchoring or mooring

All furlers are over-sized Furlex (Skreecher furler just overhauled 11/14)

Mechanical / Engine Room

Twin Volvo MD2020 diesels mounted under both aft berths, serviced every 50 hours

Hoses, clamps replaced 2012, Heat exchangers / coolers cleaned 2014. Receipts available. Saildrives Racor 500 FG fuel filters Emergency Tiller **Cruiseair 16,000 BTU reverse cycle A/C (2011)** 2 Auto bilge pumps 2 manual bilge pumps **New Props 2012** Numerous spares **Vacuflush head Upgraded 24 gallon holding tank (9/13)**

Основная информация

Тип судна: Катамаран

Модельный год: 2005

Год постройки: 2005

Страна: United States

Размеры

Длина общая: 36' 0" (10.97m)

Ширина: 18' 0" (5.49m)

Макс. осадка: 3' 2" (0.97m)

Трапы: 49' 5" (15.06m)

Размещение

Всего кают: 3

Корпус и палуба

Материал корпуса: Fiberglass

Информация о двигателе

Двигатели: 2

Производитель: Volvo

Модель: MD2020

Тип двигателя: Inboard

Тип топлива: Diesel

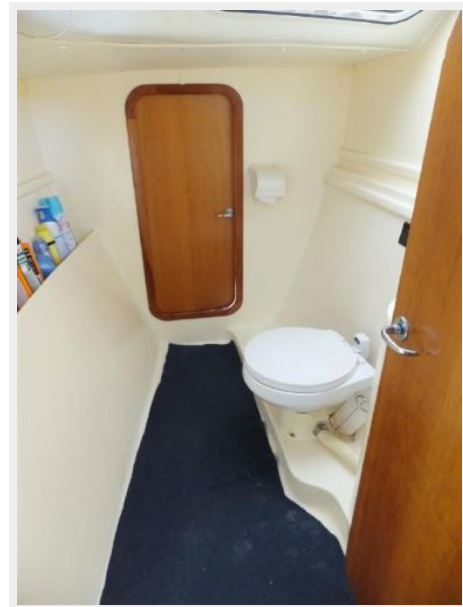
ФОТОГРАФИИ





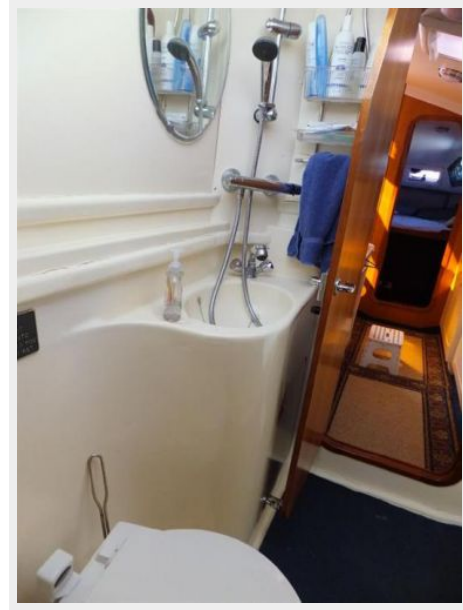












КОНТАКТЫ

Андрей Шестаков (Andrey Shestakov) – ведущий яхтенный брокер отдела продаж яхт и судов компании Shestakov Yacht Sales Inc. Официальный представитель Shestakov Yacht Sales Inc. для русскоговорящих клиентов в центральном офисе компании в Майами/Форт Лодердейл/Флорида/США.

Контактная информация

Email: andrey@shestakovyachtsales.com

Web: shestakovyachtsales.com

Телефоны

Краснодарский край: **+7(918)465-66-44**

США, Майами, Флорида: **+1(954)274-4435**

Время работы

Понедельник – Суббота: **9:00 - 21:00**
EDT

Воскресенье: **Закрето**

Адрес



Harbour Towne Marina, 850 NE 3rd St,
STE 213, Dania, FL 33004