

C'EST SEA BON — TARTAN



Судостроитель: TARTAN

Год постройки: 1982

Модель: Крейсерская яхта

Цена: **ЦЕНА ЯХТЫ ПО ЗАПРОСУ**

Местонахождение: United States

Длина общая: 37' 0" (11.28m)

Мин. осадка: 4' 2" (1.27m)

Макс. осадка: 7' 9" (2.36m)

Купить C'est Sea Bon — TARTAN а также выбрать подходящую вам яхту из нашего каталога яхт вам поможет опытный яхтенный брокер Андрей Шестаков. На сегодняшний день компания Shestakov Yacht Sales Inc. имеет большое количество яхт в собственном списке продаж, а также тесно сотрудничает со всеми крупными яхтенными производителями по всему миру.

Для того чтобы купить яхту C'est Sea Bon — TARTAN а также проконсультироваться по любому вопросу связанному с покупкой, продажей, чартером яхт позвоните по телефону **+7(918)465-66-44**.

ОГЛАВЛЕНИЕ

ОГЛАВЛЕНИЕ	2
ХАРАКТЕРИСТИКИ	3
Обзор	3
Основная информация	9
Размеры	9
Скорость, вместимость и масса	9
Размещение	9
Корпус и палуба	9
Информация о двигателе	9
ФОТОГРАФИИ	10
КОНТАКТЫ	15
Контактная информация	15
Телефоны	15
Время работы	15
Адрес	15

ХАРАКТЕРИСТИКИ

Обзор

37' Tartan 37' KCB Sloop *New arrival*

- Boat Name: C'est Sea Bon
- Year: 1982
- **Current Price: US\$ 65,000** (12/14)
- Located in Venice, FL
- Hull Material: Fiberglass
- Engine/Fuel Type:
- YW# 64991-2794521
- Central/Exclusive Listing
- Available for co-brokerage

Additional Specs, Equipment and Information: **Boat Name** C'est Sea Bon **Specs** Keel: Centerboard **Dimensions** LOA: 37 ft 3 in LWL: 26 ft 8 in Minimum Draft: 4 ft 2 in Maximum Draft: 7 ft 9 in Ballast: 7500 lbs Bridge Clearance: 53 ft 0 in Headroom: 6 ft 3 in Dry Weight: 15000 lbs **Engines** Cruising Speed: 6 knots Maximum Speed: 7 knots

ACCOMMODATIONS

Forward Cabin

- Large V-berth with center filler; 6' 3" long and 7' 3" wide
- Access to anchor locker forward
- 2 hanging lockers with drawers port and starboard
- Private access to head
- Separate door can close off forward cabin
- 2 opening ports
- Overhead hatch
- Just outside the compartment is another hanging locker
- Holding tank under port side berth

Main Cabin

- L shaped setee to port with storage behind
- Teak lockers and shelf space behind
- Teak drop leaf table that folds flat against bulkhead
- Conventional starboard setee that slides out to provide more width for sleeping
- Pilot berth above starboard setee that doubles nicely as storage space if needed
- Hanging locker forward of starboard settee
- Two 45 gal water tanks; one under port and stbd settee

Quarter Berth

- Large quarter berth that converts to a double with fold up Nav station seat
- Reading lamp

- 45 gal fuel tank under berth

Interior Finish

- Teak and holly cabin sole
- Teak hullsides
- Oiled teak interior finishes
- Ports with screens
- Four dorades for ventilation
- Reading lights
- 110V receptacles

GALLEY

Starboard at the base of the companionway is a well designed sea galley. A generous 7 cubic feet icebox has two lids for easy access. The stove is oriented along the hullside. Facing aft you have a double stainless steel sink with cabinet beneath, and to the left is a dry bin beneath the countertop.

3 Burner Seaward Propane Stove

Adler Barbour Refrigeration w/ freezer box

Double Stainless Steel Sinks

Hot & Cold Pressure Water

Storage cabinets

HEAD

Double door entry (from salon and forward cabin)

Stainless steel sink

Hot & Cold Pressure Water

Jabsco Electric Head w/ Holding Tank

Y valve for discharge

Vanity

Mirror

Shower area with teak grate for draining

Shower sump pump

NAV STATION & QUARTERBERTH

Aft of the settee on port, the forward facing nav station has a large chart table with plenty of storage beneath the lid. Above and behind is an shelf for small items; below is a stack of three drawers for tools, parts, etc. To the left when seated, a locker door opens to a large storage space.

300 watt inverter in cabinet

Instruments mounted on panel at forward end of nav table

The seat back can be lifted out and repositioned to enlarge the sleeping area of the quarterberth.

SAILS AND RIGGING

North Sails fully battened main, new 2013

North Sails Quickcover and Lazyjacks on main, new 2014

North Sails 135% genoa, new 2014

Hood roller furling system on jib

North Sails 100% jib

Storm jib

Cruising Spinnaker w/sock

Tri Radial Spinnaker w/ sock, pole & lines

Older Sails

- North Sails main; fair condition
- North Sails 135% genoa; good condition

Two point slab reefing system on mainsail

Wire standing rigging

Keel stepped single spreader aluminum mast

Aluminum boom

ELECTRONICS

Nexus / ComnavNX@ System

- Server
- Four "Multi Function" Displays
- One wind data display

Wind, Depth, Speed Temp Transducers

Garmin Chartplotter interfaced with NX2 System and Autopilot

Garmin GPS76 as secondary GPS

Icom VHF radio at Nav Station

Standard Horizon Handheld VHF

ELECTRICAL

Interstate Starting Battery, new 10/2013; aft of nav station

4 Interstate Golf Cart house batteries, new 10/ 2014; under port side salon settee

150 Amp Powerline Alternator (rebuilt in 2009) with Xantrax smart regulator

300 watt Inverter at nav station

Two 50' Shore power cords

30A shore power connections

12V and 110V electrical panel

Steaming light

Anchor light

Foredeck light

MECHANICAL

Westerbeke Diesel; 3525 hours; 50 hp

Raycor fuel filter (2)

Martec Folding Prop

Aquamet prop shaft

Tides Marine Dripless stuffing Box

Autopilot; Comnav below deck

Mermaid reverse cycle A/C; 12,000 BTU

Starter rebuilt in 2003

Hot water heater

Manual and electrical bilge pumps

Force 10 Propane Grill w/ rail mount

Xantrax 40 amp battery charger

DECK & HULL

The hull is hand laid fiberglass with end grain balsa coring to improve stiffness without sacrificing weight. In areas of high stress such as the mast step, through hull fittings, chain plate terminals, engine supports and keel sections the coring is tapered into solid fiberglass. The deck has the same construction method with a good non-skid surface molded into all flat areas. The hull to deck joint consists of an internal flange bedded with butyle and polysulfide and bolted to the deck on 8 inch centers.

Interlux Barrier Coated in 1997

Keel Centerboard

Skeg hung rudder

Bow pulpit & stern rails

Double lifelines

35# CQR with 50' 5/16 chain and 200' 5/8" nylon rode

Fortress 16 w/25' of chain and 150' 5/8 nylon rode

Full Bimini w/ opening center panel

Dodger

Original slatted cockpit seats (beautifully varnished)

Cockpit cushions

Covers for: helm,winches,hatches and all exterior teak

Screens for companionway, both hatches and all ports

Outboard motor mount

Boarding ladder

MISCELLANEOUS

Documentation

- Original Tartan 37 Owners Manual
- Original Westerbeke Manuals
- NX2 Instrument System Manuals
- Com Nav Autopilot Manual
- Icom VHF Manual

Lifesling System

Ritchie compass

Emergency tiller

2 Lifejacket Harnesses

4 Life jackets

Jackline and tethers

Fenders & fender board

Docking and spring lines

TENDER

1982 Achilles Dingy - good condition

2000 Yamaha 2.5 HP outboard; < 15 hours

SPECIAL PREVENTATIVE MAINTENANCE

Deck and cabin top fittings removed and oversized holes drilled and filled with epoxy.

Holes re-drilled, countersunk, caulked and all fittings remounted.

Основная информация

Тип судна: Крейсерская яхта

Подкатегория: Sloop

Модельный год: 1982

Год постройки: 1982

Страна: United States

Размеры

Длина общая: 37' 0" (11.28m)

Длина по ватерлинии: 26' 8" (8.13m)

Мин. осадка: 4' 2" (1.27m)

Макс. осадка: 7' 9" (2.36m)

Трапы: 53' 0" (16.15m)

Скорость, вместимость и масса

Водоизмещение: 15000 Pounds

Размещение

Всего кают: 2

Корпус и палуба

Материал корпуса: Fiberglass

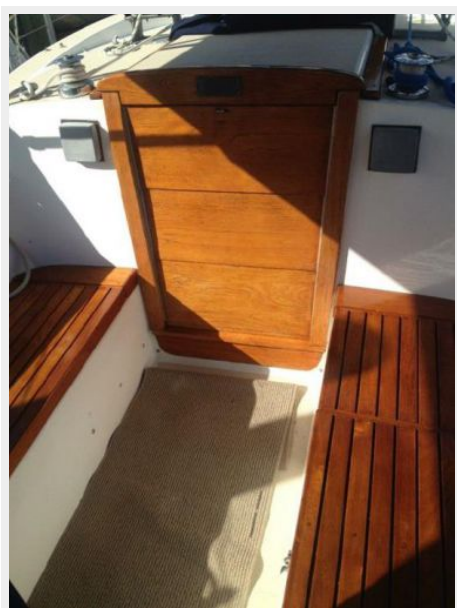
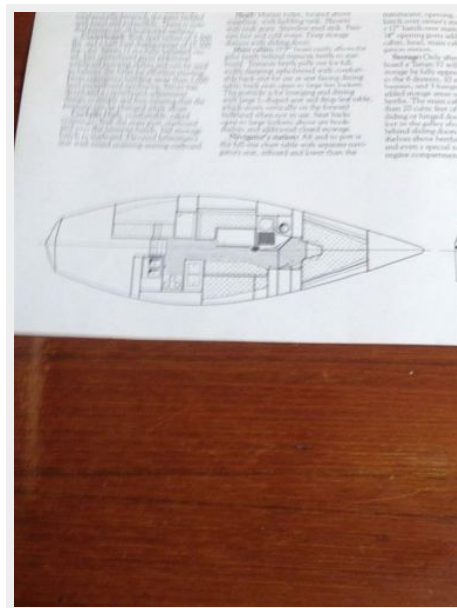
Информация о двигателе

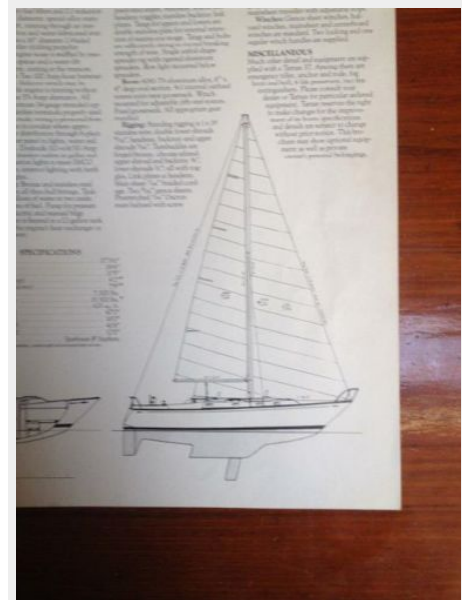
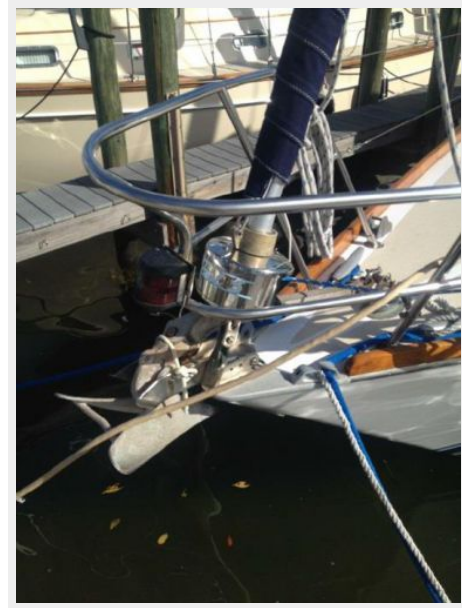
Двигатели: 1

Производитель: westerbeke

Тип топлива: Diesel

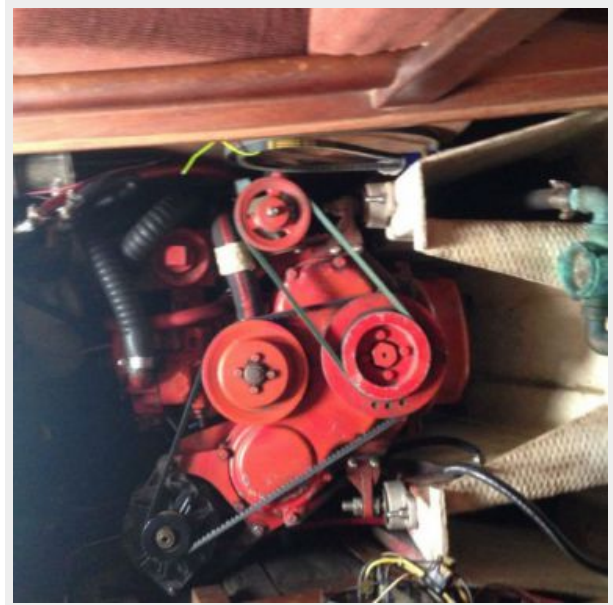
ФОТОГРАФИИ











КОНТАКТЫ

Андрей Шестаков (Andrey Shestakov) – ведущий яхтенный брокер отдела продаж яхт и судов компании Shestakov Yacht Sales Inc. Официальный представитель Shestakov Yacht Sales Inc. для русскоговорящих клиентов в центральном офисе компании в Майами/Форт Лодердейл/Флорида/США.

Контактная информация

Email: andrey@shestakovyachtsales.com

Web: shestakovyachtsales.com

Телефоны

Краснодарский край: **+7(918)465-66-44**

США, Майами, Флорида: **+1(954)274-4435**

Время работы

Понедельник – Суббота: **9:00 - 21:00**
EDT

Воскресенье: **Закрито**

Адрес



Harbour Towne Marina, 850 NE 3rd St,
STE 213, Dania, FL 33004