

## WHY KNOT — SILVERTON



**Builder:** [SILVERTON](#)

**LOA:** 42' 0" (12.80m)

**Year Built:** 2005

**Max Draft:** 3' 7" (1.09m)

**Model:** Cruiser

**Price:** PRICE ON APPLICATION

**Location:** United States

Our experienced yacht broker, Andrey Shestakov, will help you choose and buy a yacht that best suits your needs **Why Knot — SILVERTON** from our catalogue. Presently, at Shestakov Yacht Sales Inc., we have a wide variety of yachts available on our sale's list. We also work in close contact with all the big yacht manufacturers from all over the world.

If you would like to buy a yacht **Why Knot — SILVERTON** or would like help answering any questions concerning purchasing, selling or chartering a yacht, please call **+1(954)274-4435**

---

# TABLE OF CONTENTS

---

TABLE OF CONTENTS	2
SPECIFICATIONS	3
Overview	3
Basic Information	3
Dimensions	3
Speed, Capacities and Weight	3
Accommodations	3
Hull and Deck Information	3
Engine Information	4
DETAILED INFORMATION	5
Overview	5
Accommodations	5
Exterior and Cockpit	6
Fly Bridge and Electronics	6
Engine Room and Mechanical	6
Additional Information	7
Disclaimer	7
Exclusions	7
Disclaimer	7
PHOTOS	8
CONTACTS	13
Contact details	13
Telephones	13
Office hours	13
Address	13

---

# SPECIFICATIONS

---

## Overview

---

The 'Why Knot' has arrived at Bluewater Marina to Sell!

Call now for details!

## Basic Information

---

**Category:** Cruiser

**Model Year:** 2005

**Year Built:** 2005

**Country:** United States

## Dimensions

---

**LOA:** 42' 0" (12.80m)

**Max Draft:** 3' 7" (1.09m)

**Clearance:** 22' 0" (6.71m)

**MFG Length:** 44' 1" (13.44m)

## Speed, Capacities and Weight

---

**Displacement:** 26300 Pounds

**Water Capacity:** 200 Gallons

**Holding Tank:** 40 Gallons

**Fuel Capacity:** 524 Gallons

## Accommodations

---

**Total Cabins:** 2

**Total Heads:** 1

## Hull and Deck Information

---

**Hull Material:** Fiberglass

---

## Engine Information

---

**Engines:** 2

**Manufacturer:** Cummins

**Model:** 6CTA 8.3

**Engine Type:** Inboard

**Fuel Type:** Diesel

---

# DETAILED INFORMATION

---

## Overview

---

The Silverton 42 Convertible offers incredible accommodations with luxurious appointments. A large flybridge provides plentiful seating and storage. The command helm provides good visibility and the controls are at the captain's fingertips. The unique molded steps are great for accessing the bridge - no more ladders to bump those knees. The cockpit offers room for entertaining or tournament fishing. There are molded steps in the cockpit for easy access forward.

Master stateroom forward features a large pedestal queen bed and private access to both shower and head compartments. The guest stateroom to port has great storage and privacy. The unique split head and shower arrangement offer flexibility for guests and owners.

The galley maximizes available space by using cabinetry on both sides of the companionway and features multiple refrigeration units with and freezer, a full complement of appliances and storage on both sides of the isle.

## Accommodations

---

- Salon features settee to starboard and entertainment to port
- Settee converts to sleep 2
- Sanyo flat panel TV
- Bose stereo system
- Marine Airrrr salon air-conditioning with reverse cycle heat
- Aft curtain in salon for privacy
- Forward of salon is a c shaped settee with dining table
- Forward windshield is glass for an open feel
- Windshield screen provides privacy and protection from sun
- Entertainment center to port with flat panel TV
- Large dining area forward in salon
- Full galley is 2 steps down
- Nova Kool refrigerator/freezer
- Nova Kool refrigerator with freezer compartment
- Princess 2 burner stove
- Sharp microwave convection oven
- Master stateroom forward features large walk around bed and abundant storage
- Master stateroom Marine Airrrr air-conditioning with reverse cycle heat
- Sole flat panel TV in master
- JVC DVD player in master stateroom
- Private access from master to head and shower compartments
- Head and shower compartments are split offering flexibility

- Guest stateroom is port and features double bed and storage

---

## Exterior and Cockpit

---

- Large cockpit is perfect for fishing and cruising
- Sliding salon door
- Molded steps from cockpit to bridge for easy access for people or dogs
- Cockpit icemaker and sink
- Cockpit engine room access keeps salon clean
- Large fishbox in cockpit sole
- Glendenning cablemaster in cockpit for ease of handling shore power cord
- Salt and fresh water washdown in cockpit
- Shore water inlet
- Cockpit shower
- Transom door for easy access to swim platform
- Cockpit storage boxes in sides

---

## Fly Bridge and Electronics

---

- Molded in hardtop with electronics box
- Full enclosure new 2014
- Comfortable flybridge seating forward of console and to port side
- Overhead lights in hardtop
- Raymarine C120 plotter with sounder
- Raymarine C120 with 4KW radar
- Raymarine ST6001 autopilot
- Flybridge stereo
- Icom M603 VHF
- KVH Tracvision 3 sat TV system
- Remote spotlight
- Glendenning engine synchronizer
- Faria gauges
- Ram mic in salon
- Ritchie compass

---

## Engine Room and Mechanical

---

- 8 KW Kohler generator
- Racor fuel filters on main engines and generator
- Oil change system,m
- Intelli-Power battery charger

- Fire suppression system
- Dripless shaft seals
- 50A shore power system
- Cummins Diamond series 6CTA 8.3L 430 hp engines with 650 hours

---

## Additional Information

---

Why Knot was brought to us to sell! This would be an excellent choice for the Fisherman who would like to cruise or the cruiser who would occasionally fish. The molded steps to the bridge offer easy access for those who may not be able to climb a ladder or for the beloved pet to come along!

---

## Disclaimer

---

While we attempt to display current and accurate data, this listing may not reflect the most recent transactions or may contain occasional data entry errors. Selling agent makes no warranties, express or implied, regarding the content or availability of the products described herein. All inventory listed is subject to availability and prior sale. Please consult selling agent for details. Prices are quoted for the USA only and may not include transportation, taxes, or other applicable charges. Photographs may be representative only and may vary somewhat from the actual items offered for sale. We will not be responsible for inaccurate data obtained from our site. Please check with your local dealer to ensure that you have the latest information available. Information on this web site could include technical inaccuracies or typographical errors. Changes may be periodically made to the information or the products herein. Questions or comments regarding these policies may be directed to website hosting agent.

---

## Exclusions

---

Owner's personal belongings.

---

## Disclaimer

---

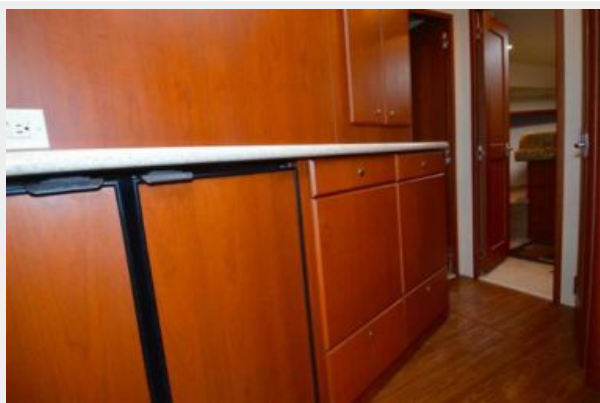
The Company offers the details of this vessel or yacht in good faith but cannot guarantee or warrant the accuracy of this information nor warrant the condition of the vessel. A buyer should instruct his representatives, agents, or his surveyors, to investigate such details as the buyer desires validated. This vessel or yacht is offered subject to prior sale, price change, or withdrawal without notice.

# PHOTOS













# CONTACTS

---

Andrey Shestakov, leading yacht broker of the sales department of Shestakov Yacht Sales Inc. Shestakov Yacht Sales Inc., the official representative of the Miami/Fort Lauderdale FL headquarters.

## Contact details

---

Email: [andrey@shestakovyachtsales.com](mailto:andrey@shestakovyachtsales.com)

Web: [shestakovyachtsales.com/en/](http://shestakovyachtsales.com/en/)

## Telephones

---

USA: +1(954)274-4435

## Office hours

---

Monday – Saturday: **9:00 - 21:00** EDT

Sunday: **closed**

## Address

---



Harbour Towne Marina, 850 NE 3rd St,  
STE 213, Dania, FL 33004