

DANIELLA — AZIMUT



Builder: AZIMUT

Year Built: 2000

Model: Motor Yacht

Price: PRICE ON APPLICATION

Location: United States

LOA: 70' 0" (21.34m)

Beam: 18' 3" (5.56m)

Min Draft: 5' 6" (1.68m)

Max Draft: 5' 6" (1.68m)

Our experienced yacht broker, Andrey Shestakov, will help you choose and buy a yacht that best suits your needs **DANIELLA — AZIMUT** from our catalogue. Presently, at Shestakov Yacht Sales Inc., we have a wide variety of yachts available on our sale's list. We also work in close contact with all the big yacht manufacturers from all over the world.

If you would like to buy a yacht **DANIELLA — AZIMUT** or would like help answering any questions concerning purchasing, selling or chartering a yacht, please call **+1(954)274-4435**

TABLE OF CONTENTS

TABLE OF CONTENTS	2
SPECIFICATIONS	3
Overview	3
Basic Information	3
Dimensions	3
Speed, Capacities and Weight	3
Accommodations	4
Hull and Deck Information	4
Engine Information	4
DETAILED INFORMATION	5
Key Features & Upgrades	5
Exclusions	5
Disclaimer	5
PHOTOS	7
CONTACTS	22
Contact details	22
Telephones	22
Office hours	22
Address	22

SPECIFICATIONS

Overview

*******PRICE JUST REDUCED \$200,000 - OWNER MOVING UP -- BRING ALL OFFERS*******

2000 70' Azimut Sea Jet -- "DANIELLA" is Very Well Kept and Shows like a Much Newer Yacht

Recent Upgrades Include: All New Soft Goods, New Flat Screen TV's throughout, New Bow & Stern Thruster, Custom Flybridge Bar w/ Grill, New Garmin Electronics + Much More!!

Spacious 4 Stateroom / 4 Head Layout + Crew Quarters with Private Head / Shower

Basic Information

Category: Motor Yacht

Sub Category: Flybridge with Euro Transom

Model Year: 2000

Year Built: 2000

Country: United States

Vessel Top: Bimini Top

Fly Bridge: Yes

Cockpit: Yes

Dimensions

LOA: 70' 0" (21.34m)

Beam: 18' 3" (5.56m)

Min Draft: 5' 6" (1.68m)

Max Draft: 5' 6" (1.68m)

Speed, Capacities and Weight

Displacement: 105600 Pounds

Water Capacity: 400 Gallons

Fuel Capacity: 1570 Gallons

Accommodations

Total Cabins: 4

Total Heads: 4

Crew Cabin: 1

Crew Heads: 1

Hull and Deck Information

Hull Material: Fiberglass

Hull Color: White

Engine Information

Engines: 2

Manufacturer: MTU

Model: 12V 183 TE 93

Engine Type: Inboard

Fuel Type: Diesel

DETAILED INFORMATION

Key Features & Upgrades

- Spacious 4 Stateroom Layout w/ 4 Heads
- Crew Quarters w/ Head & Shower
- All NEW Soft Goods - Carpeting, Draperies, Couches & Bedding
- NEW Canvas & Eisenglass + Windshield Covers
- NEW FlatScreen TV's throughout
- Satellite TV
- NEW Bow & Stern Thruster
- NEW Garmin Electronics - 5212 on Flybridge Helm & 5208 on Lower Helm
- NEW Custom Flybridge Bar w/ Grill - Includes Isotherm Refrigerator & Isotherm Clean IceMaker
- NEW Cushions in Flybridge
- NEW Full Size Washing Machine & Dryer
- NEW Wireless Thruster Control
- Port Engine - Rebuilt w/ 100 current hours (New Long Block)
- Twin Generators
- Dinghy Included - Yamaha 50 4-Stroke Outboard

Vessel Walkthrough

Board either port or starboard side using side deck doors or using the integral platform and ascending steps to aft deck gates. The very spacious Aft Deck gives access to the Salon via stainless steel sliding doors. The Salon features two curved sofas, high gloss cherry joinery and a semi-open Galley to starboard. A large dining settee is to port, opposite the full Lower Helm area. The lower deck starts forward with a crew cabin for two (deck access only), then the spacious VIP Stateroom with en suite Head with stall shower. Next aft are twin lower berths to port with an en suite Head with stall shower and upper/lower berths to starboard also with an en suite Head with stall shower. Next aft but accessed only from a private stairway located in the aft end of the Salon is the full-beam Master Stateroom with en suite Head with double sinks and stall shower. Engine Room is accessed from the port side deck. Jet Sky garage is located in the stern off the swim platform.

Exclusions

Owner's personal belongings.

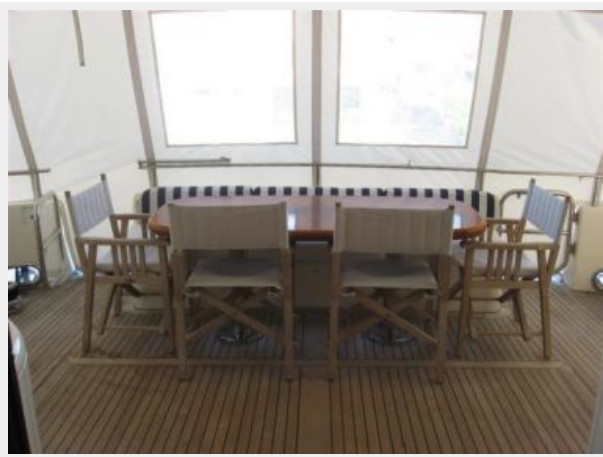
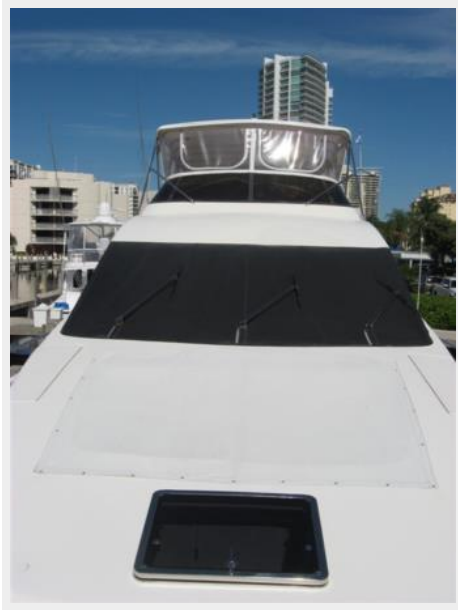
Disclaimer

The Company offers the details of this vessel or yacht in good faith but cannot guarantee or

warrant the accuracy of this information nor warrant the condition of the vessel. A buyer should instruct his representatives, agents, or his surveyors, to investigate such details as the buyer desires validated. This vessel or yacht is offered subject to prior sale, price change, or withdrawal without notice.

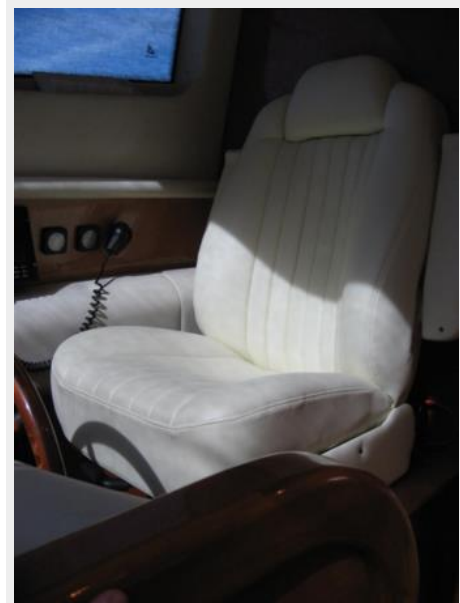
PHOTOS



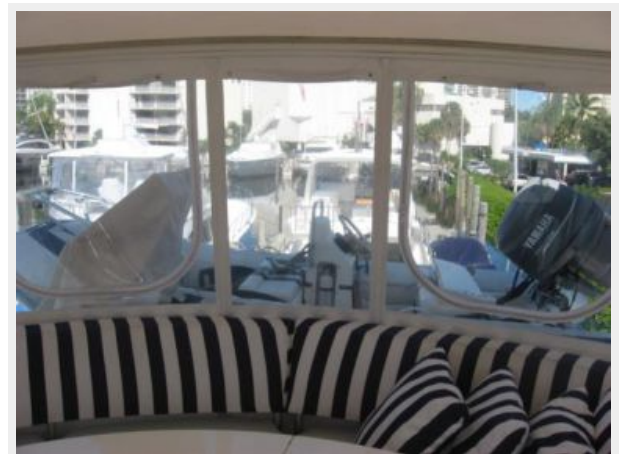




























CONTACTS

Andrey Shestakov, leading yacht broker of the sales department of Shestakov Yacht Sales Inc. Shestakov Yacht Sales Inc., the official representative of the Miami/Fort Lauderdale FL headquarters.

Contact details

Email: andrey@shestakovyachtsales.com

Web: shestakovyachtsales.com/en/

Telephones

USA: +1(954)274-4435

Office hours

Monday – Saturday: **9:00 - 21:00** EDT

Sunday: **closed**

Address



Harbour Towne Marina, 850 NE 3rd St,
STE 213, Dania, FL 33004