

BLUE MAMBA — OCEANLINE



Builder: [Oceanline](#)

Year Built: 2008

Model: Motor Yacht

Price: PRICE ON APPLICATION

Location: France

LOA: 127' 0" (38.71m)

Beam: 24' 8" (7.52m)

Max Draft: 8' 1" (2.46m)

Cruise Speed: 14 Kts. (16 MPH)

Max Speed: 28 Kts. (32 MPH)

Our experienced yacht broker, Andrey Shestakov, will help you choose and buy a yacht that best suits your needs **BLUE MAMBA — Oceanline** from our catalogue. Presently, at Shestakov Yacht Sales Inc., we have a wide variety of yachts available on our sale's list. We also work in close contact with all the big yacht manufacturers from all over the world.

If you would like to buy a yacht **BLUE MAMBA — Oceanline** or would like help answering any questions concerning purchasing, selling or chartering a yacht, please call **+1(954)274-4435**

TABLE OF CONTENTS

TABLE OF CONTENTS	2
SPECIFICATIONS	4
Overview	4
Basic Information	4
Dimensions	4
Speed, Capacities and Weight	4
Accommodations	5
Hull and Deck Information	5
Engine Information	5
DETAILED INFORMATION	6
Dimensions	6
Mechanical	6
Navigation Systems	7
Communication Systems	7
Galley Equipment	8
Interior	8
Crew Accommodations	9
Tender and Toys	9
Deck Equipment	9
Safety and Security	9
Broker Comments	10
Exclusions	10
Disclaimer	10
PHOTOS	11
TV Theater	11
Aft Deck	11
Galley	11
Dining	11

Master Stateroom	11
Master Bath	11
Guest Double Stateroom	12
VIP Stateroom	12
Guest Bath	12
Guest Twin Stateroom	12
Flybridge Helm	12
Pilothouse	12
Jacuzzi	13
Flybridge	13
GA	13
Engine Room	13
CONTACTS	14
Contact details	14
Telephones	14
Office hours	14
Address	14

SPECIFICATIONS

Overview

Designed by Frank Mulder and with an interior by Art-Line, BLUE MAMBA is a very stylish yacht inside and out. Both contemporary and innovative, the interior has accommodation for 12 guests in 6 cabins. She looks fast and she is fast, able to reach a maximum speed of 28 knots. Bow and stern thrusters ensure that she is easily maneuverable.

Basic Information

Category: Motor Yacht

Sub Category: Raised Pilothouse

Model Year: 2008

Year Built: 2008

Country: France

Coast Guard #: Valleta - Malta

Vessel Top: Raised Pilothouse

Dimensions

LOA: 127' 0" (38.71m)

LWL: 106' 11" (32.59m)

Beam: 24' 8" (7.52m)

Max Draft: 8' 1" (2.46m)

Speed, Capacities and Weight

Cruise Speed: 14 Kts. (16 MPH)

Cruise Speed RPM: 1200 Kts.

Cruise Speed Range: 845

Max Speed: 28 Kts. (32 MPH)

Max Speed RPM: 2100 Kts.

Max Speed Range: 675 Kts.

Gross Tonnage: 165 Pounds

Water Capacity: 1188.774234 Gallons

Holding Tank: 343.4236676 Gallons

Fuel Capacity: 6657.1357104 Gallons

Accommodations

Total Cabins: 6

Sleeps: 12

Crew Cabin: 3

Crew Sleeps: 6

Hull and Deck Information

Hull Material: Composite

Hull Designer: Mulder Design

Interior Designer: Art-Line (Holland)

Engine Information

Engines: 2

Manufacturer: MTU

Model: 12V4000 M90

Engine Type: Inboard

Fuel Type: Diesel

DETAILED INFORMATION

Dimensions

Length overall: 38.71 m / 127'

Waterline length: 32.60m / 106' 11"

Overall Beam: 7.54 m / 24' 8"

Draft extreme: 2.45 m / 8' 1"

Gross tonnage: 165

Net tonnage: 45

Displacement: 180 tons

Fuel capacity: 25,200 litres

Fresh water capacity: 4,500 litres

Grey water: 1300 litres

Black water: 1300 litres

Speed (max): 28 knots at 2100rpm

Speed (cruise): 14 knots at 1200rpm

Range: 675 Nm at max speed / 845 Nm at cruise speed

Fuel consumption: Max speed, 1000l/hr / Cruise speed, 380l/hr

Mechanical

Main engines: 2 x MTU 12V 4000 M90, 2100 rpm/2040 kW

Hours: 1650 (Nov 2014)

Gearbox: ZF 7550 V

Propellers: 2 x 5 blade

Stabilizers: ABT Trac 370

Bow thruster: ABT Trac

Stern thruster: ABT Trac

Generators: 2 x Westerbeke 80kw OBEDA

Steering: Jastram S2-13-2-35

Shore power: ATLAS

Water maker: 2 x Sea Recovery Aquamatic 1400

Fuel separator: Alfa Laval

Air conditioning: 5 x Technicold CW60SC (60k BTU)

Sewage: Headhunter Tidal Wave HMX 512

Navigation Systems

Radar: Simrad 700

Autopilot: Simrad AP50

AIS: JRC JHS-182

Depth sounder: B&G

Anemometer: B&G H3000

GPS: JRC JLR-7700 Mk II

Electronic Chart: Simrad ECS CS65

Navtex: JRC NCR 333

Communication Systems

Inmarsat C GMDSS terminal TT-3020 C

Sailor CU5100 MF/HF Radio

Simrad RS87 VHF with DSC

JRC NCM 1770 VHF

ICOM Handheld VHF Radio (5 pcs)

KVH Tracvision M9

KVH Tracvision V7

Galley Equipment

4 x combined refrigerators/freezers

1 x deep freezer

1 x Schott Ceran stove

1 x Whirlpool grill

1 x Whirlpool dishwasher

1 x Whirlpool K20 Icemaker/with reverse osmosis system

1 x Miele Nespresso coffee machine

1 x Whirlpool microwave (2010)

1 x Whirlpool oven

Fagor extraction system

Interior

The Art-Line (Holland) interior is contemporary, using a mixture of materials such as leather, teak, marble, and alcantara. Colours are neutral, creating a warm and relaxing environment. Large windows throughout ensure good natural light with adjustable lighting to vary the mood after dark. On entering from the aft deck, there is a lounge area of comfortable, low, brown leather seating perfect for watching a movie on the 52" Sharp Aquos TV and enjoying perfect sound through the B&W speakers. In the middle of the saloon is a central dining table for up to 12 guests. This is surrounded by Carrara marble floor. The table can be raised and a leaf removed, to form a bar. The chairs around the table are also height adjustable to transform them from dining chairs to bar stools. A raised platform to starboard with 2 leather armchairs and poof is perfect for a game of chess. Port side forward is the well equipped galley. A spiral staircase takes one either up to the bridge or sundeck or down to the 4 guest cabins. The Master Cabin is on the main deck, forward. It is very bright with large windows and has a 37 inch flat screen Sharp TV, electric blinds, and generous closet/storage space. It has an impressive sunken bathroom down a short flight of steps, with bath tub, twin basins, shower and WC. The VIP cabin is located forward on the lower deck and is accessed via a staircase just aft of the master cabin entrance. It has a 32 inch Sharp TV and has an ensuite shower room, wardrobe, and internet connection. On the lower deck are 4 guest cabins: two double and two twin. All cabins are en suite with showers. They also have wardrobes, 26" Samsung TV/Audio and internet connection.

Crew Accommodations

On the starboard side amidships of the lower deck are 2 x twin cabins for stewardesses, deckhand and engineer. Both are ensuite with showers. To port is the Captain's cabin with a double bed and ensuite bathroom. The crew mess is between these two sets of cabins and comprises round table and chairs large enough for all crew to be seated all together. Small crew galley includes microwave, dishwasher and combined refrigerator/freezer. The laundry with 1 Miele Washing machine and 1 Miele dryer is at the aft wall of the crew mess.

Tender and Toys

Castoldi 5m RIB with Yanmar 125hp inboard with jet drive

3 person inflatable banana

Inflatable ring

Water skis

Wakeboard

Diving equipment

Fishing tackle

Deck Equipment

Swim platform: 2 mooring bollards Port side swimming ladder Starboard side passerelle The Main deck aft has U shaped fixed seating and a large table for dining and occasional chairs enabling 12 people to sit around it. Muir hydraulic capstans, bollards, side bollards Foredeck: 2 anchor winches with vertical capstans and devils claw for breaking the chain. The boat is equipped with two 170 Kg HHP anchors and each has 130m chain. At the aft part of the sundeck is the tender, Opacmare davit and Jacuzzi. Extensive seating with table for 12 people with chairs and outside steering position. At the starboard side of the sundeck is situated a grill, small refrigerator and sink.

Safety and Security

The vessel has Tyco fire detection (smoke and high temperature) sensors in each enclosed area. In the engine room are fire alarms and gas system with Novec 1230 liquid from Tyco. The hull, superstructure and ceilings are insulated with fire insulation (A60). 15 portable fire extinguishers. The boat has seven cameras for monitoring the entrances, and intruder alarm system. The following equipment is also onboard: immersion suits, swimming vest, 4 life rings, 4

life rafts each for 10 people, 2 embarkation ladders.

Broker Comments

Designed by Frank Mulder and with an interior by Art-Line, BLUE MAMBA is a very stylish yacht inside and out. Both contemporary and innovative, the interior has accommodation for 12 guests in 6 cabins. She looks fast and she is fast, able to reach a maximum speed of 28 knots. Bow and stern thrusters ensure that she is easily maneuverable.

Exclusions

Owner's personal belongings.

Disclaimer

The Company offers the details of this vessel or yacht in good faith but cannot guarantee or warrant the accuracy of this information nor warrant the condition of the vessel. A buyer should instruct his representatives, agents, or his surveyors, to investigate such details as the buyer desires validated. This vessel or yacht is offered subject to prior sale, price change, or withdrawal without notice.

PHOTOS

Aft Deck



TV Theater



Dining



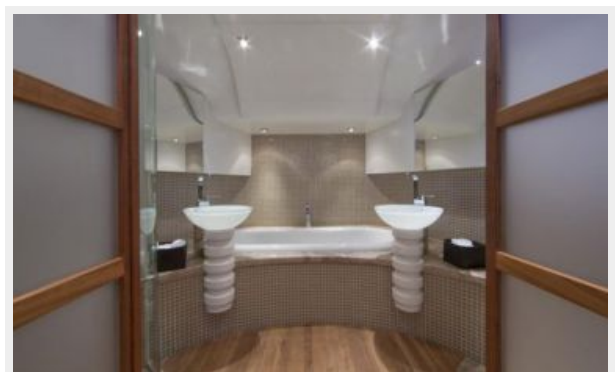
Galley



Master Stateroom



Master Bath



VIP Stateroom



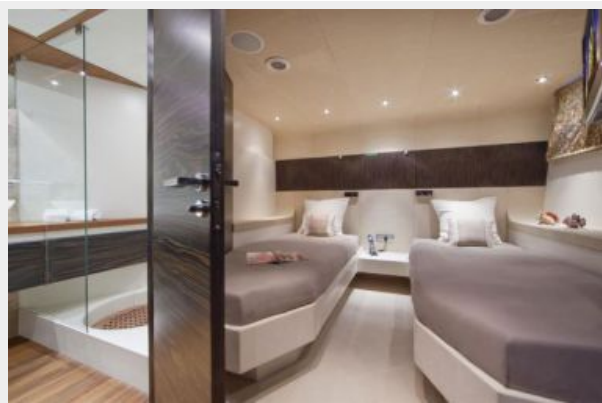
Guest Double Stateroom



Guest Bath



Guest Twin Stateroom



Pilothouse



Flybridge Helm



Flybridge



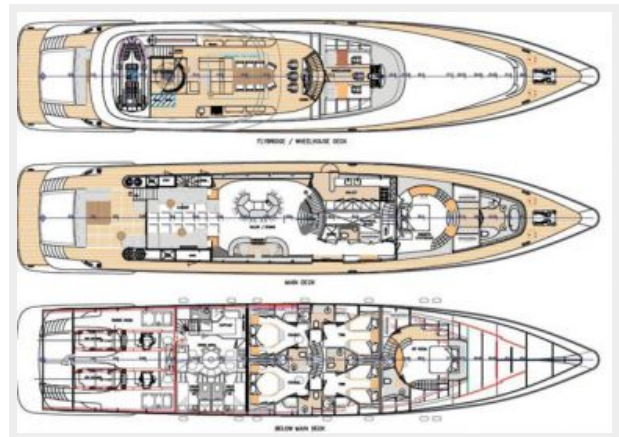
Jacuzzi



Engine Room



GA



CONTACTS

Andrey Shestakov, leading yacht broker of the sales department of Shestakov Yacht Sales Inc. Shestakov Yacht Sales Inc., the official representative of the Miami/Fort Lauderdale FL headquarters.

Contact details

Email: andrey@shestakovyachtsales.com

Web: shestakovyachtsales.com/en/

Telephones

USA: +1(954)274-4435

Office hours

Monday – Saturday: **9:00 - 21:00** EDT

Sunday: **closed**

Address



Harbour Towne Marina, 850 NE 3rd St,
STE 213, Dania, FL 33004