

BLUE MAMBA — OCEANLINE



Судостроитель: [Oceanline](#)

Год постройки: 2008

Модель: Моторная яхта

Цена: **ЦЕНА ЯХТЫ ПО ЗАПРОСУ**

Местонахождение: France

Длина общая: 127' 0" (38.71m)

Ширина: 24' 8" (7.52m)

Макс. осадка: 8' 1" (2.46m)

Крейс. скорость: 14 Kts. (16 MPH)

Макс. скорость: 28 Kts. (32 MPH)

Купить **BLUE MAMBA** — **Oceanline** а также выбрать подходящую вам яхту из нашего каталога яхт вам поможет опытный яхтенный брокер Андрей Шестаков. На сегодняшний день компания **Shestakov Yacht Sales Inc.** имеет большое количество яхт в собственном списке продаж, а также тесно сотрудничает со всеми крупными яхтенными производителями по всему миру.

Для того чтобы купить яхту **BLUE MAMBA** — **Oceanline** а также проконсультироваться по любому вопросу связанному с покупкой, продажей, чартером яхт позвоните по телефону **+7(918)465-66-44**.

ОГЛАВЛЕНИЕ

ОГЛАВЛЕНИЕ	2
ХАРАКТЕРИСТИКИ	4
Обзор	4
Основная информация	4
Размеры	4
Скорость, вместимость и масса	5
Размещение	5
Корпус и палуба	5
Информация о двигателе	5
ПОДРОБНОЕ ОПИСАНИЕ	6
Dimensions	6
Mechanical	6
Navigation Systems	7
Communication Systems	7
Galley Equipment	8
Interior	8
Crew Accommodations	9
Tender and Toys	9
Deck Equipment	9
Safety and Security	9
Broker Comments	10
Исключения	10
Отказ от ответственности	10
ФОТОГРАФИИ	11
TV Theater	11
Aft Deck	11
Galley	11
Dining	11

Master Stateroom	11
Master Bath	11
Guest Double Stateroom	12
VIP Stateroom	12
Guest Bath	12
Guest Twin Stateroom	12
Flybridge Helm	12
Pilothouse	12
Jacuzzi	13
Flybridge	13
GA	13
Engine Room	13
КОНТАКТЫ	14
Контактная информация	14
Телефоны	14
Время работы	14
Адрес	14

ХАРАКТЕРИСТИКИ

Обзор

Designed by Frank Mulder and with an interior by Art-Line, BLUE MAMBA is a very stylish yacht inside and out. Both contemporary and innovative, the interior has accommodation for 12 guests in 6 cabins. She looks fast and she is fast, able to reach a maximum speed of 28 knots. Bow and stern thrusters ensure that she is easily maneuverable.

Основная информация

Тип судна: Моторная яхта

Подкатегория: Raised Pilothouse

Модельный год: 2008

Год постройки: 2008

Страна: France

Номер регистрации в береговой охране: Valleta - Malta

Верх: Raised Pilothouse

Размеры

Длина общая: 127' 0" (38.71m)

Длина по ватерлинии: 106' 11" (32.59m)

Ширина: 24' 8" (7.52m)

Макс. осадка: 8' 1" (2.46m)

Скорость, вместимость и масса

Крейс. скорость: 14 Kts. (16 MPH)

Крейсерская скорость поворота: 1200 Kts.

Дальность на крейсерской скорости: 845

Макс. скорость: 28 Kts. (32 MPH)

Макс. скорость поворота: 2100 Kts.

Дальность на макс. скорости: 675 Kts.

Чистый вес: 165 Pounds

Вместимость воды: 1188.774234 Gallons

Вместимость сточного бака: 343.4236676 Gallons

Объем топливного бака: 6657.1357104 Gallons

Размещение

Всего кают: 6

Спальные места: 12

Каюты экипажа: 3

Спальных мест экипажа: 6

Корпус и палуба

Материал корпуса: Composite

Дизайнер корпуса: Mulder Design

Дизайнер интерьера: Art-Line (Holland)

Информация о двигателе

Двигатели: 2

Производитель: MTU

Модель: 12V4000 M90

Тип двигателя: Inboard

Тип топлива: Diesel

ПОДРОБНОЕ ОПИСАНИЕ

Dimensions

Length overall: 38.71 m / 127'

Waterline length: 32.60m / 106' 11"

Overall Beam: 7.54 m / 24' 8"

Draft extreme: 2.45 m / 8' 1"

Gross tonnage: 165

Net tonnage: 45

Displacement: 180 tons

Fuel capacity: 25,200 litres

Fresh water capacity: 4,500 litres

Grey water: 1300 litres

Black water: 1300 litres

Speed (max): 28 knots at 2100rpm

Speed (cruise): 14 knots at 1200rpm

Range: 675 Nm at max speed / 845 Nm at cruise speed

Fuel consumption: Max speed, 1000l/hr / Cruise speed, 380l/hr

Mechanical

Main engines: 2 x MTU 12V 4000 M90, 2100 rpm/2040 kW

Hours: 1650 (Nov 2014)

Gearbox: ZF 7550 V

Propellers: 2 x 5 blade

Stabilizers: ABT Trac 370

Bow thruster: ABT Trac

Stern thruster: ABT Trac

Generators: 2 x Westerbeke 80kw OBEDA

Steering: Jastram S2-13-2-35

Shore power: ATLAS

Water maker: 2 x Sea Recovery Aquamatic 1400

Fuel separator: Alfa Laval

Air conditioning: 5 x Technicold CW60SC (60k BTU)

Sewage: Headhunter Tidal Wave HMX 512

Navigation Systems

Radar: Simrad 700

Autopilot: Simrad AP50

AIS: JRC JHS-182

Depth sounder: B&G

Anemometer: B&G H3000

GPS: JRC JLR-7700 Mk II

Electronic Chart: Simrad ECS CS65

Navtex: JRC NCR 333

Communication Systems

Inmarsat C GMDSS terminal TT-3020 C

Sailor CU5100 MF/HF Radio

Simrad RS87 VHF with DSC

JRC NCM 1770 VHF

ICOM Handheld VHF Radio (5 pcs)

KVH Tracvision M9

KVH Tracvision V7

Galley Equipment

4 x combined refrigerators/freezers

1 x deep freezer

1 x Schott Ceran stove

1 x Whirlpool grill

1 x Whirlpool dishwasher

1 x Whirlpool K20 Icemaker/with reverse osmosis system

1 x Miele Nespresso coffee machine

1 x Whirlpool microwave (2010)

1 x Whirlpool oven

Fagor extraction system

Interior

The Art-Line (Holland) interior is contemporary, using a mixture of materials such as leather, teak, marble, and alcantara. Colours are neutral, creating a warm and relaxing environment. Large windows throughout ensure good natural light with adjustable lighting to vary the mood after dark. On entering from the aft deck, there is a lounge area of comfortable, low, brown leather seating perfect for watching a movie on the 52" Sharp Aquos TV and enjoying perfect sound through the B&W speakers. In the middle of the saloon is a central dining table for up to 12 guests. This is surrounded by Carrara marble floor. The table can be raised and a leaf removed, to form a bar. The chairs around the table are also height adjustable to transform them from dining chairs to bar stools. A raised platform to starboard with 2 leather armchairs and poof is perfect for a game of chess. Port side forward is the well equipped galley. A spiral staircase takes one either up to the bridge or sundeck or down to the 4 guest cabins. The Master Cabin is on the main deck, forward. It is very bright with large windows and has a 37 inch flat screen Sharp TV, electric blinds, and generous closet/storage space. It has an impressive sunken bathroom down a short flight of steps, with bath tub, twin basins, shower and WC. The VIP cabin is located forward on the lower deck and is accessed via a staircase just aft of the master cabin entrance. It has a 32 inch Sharp TV and has an ensuite shower room, wardrobe, and internet connection. On the lower deck are 4 guest cabins: two double and two twin. All cabins are ensuite with showers. They also have wardrobes, 26" Samsung TV/Audio and internet connection.

Crew Accommodations

On the starboard side amidships of the lower deck are 2 x twin cabins for stewardesses, deckhand and engineer. Both are ensuite with showers. To port is the Captain's cabin with a double bed and ensuite bathroom. The crew mess is between these two sets of cabins and comprises round table and chairs large enough for all crew to be seated all together. Small crew galley includes microwave, dishwasher and combined refrigerator/freezer. The laundry with 1 Miele Washing machine and 1 Miele dryer is at the aft wall of the crew mess.

Tender and Toys

Castoldi 5m RIB with Yanmar 125hp inboard with jet drive

3 person inflatable banana

Inflatable ring

Water skis

Wakeboard

Diving equipment

Fishing tackle

Deck Equipment

Swim platform: 2 mooring bollards Port side swimming ladder Starboard side passerelle The Main deck aft has U shaped fixed seating and a large table for dining and occasional chairs enabling 12 people to sit around it. Muir hydraulic capstans, bollards, side bollards Foredeck: 2 anchor winches with vertical capstans and devils claw for breaking the chain. The boat is equipped with two 170 Kg HHP anchors and each has 130m chain. At the aft part of the sundeck is the tender, Opacmare davit and Jacuzzi. Extensive seating with table for 12 people with chairs and outside steering position. At the starboard side of the sundeck is situated a grill, small refrigerator and sink.

Safety and Security

The vessel has Tyco fire detection (smoke and high temperature) sensors in each enclosed area. In the engine room are fire alarms and gas system with Novec 1230 liquid from Tyco. The hull, superstructure and ceilings are insulated with fire insulation (A60). 15 portable fire extinguishers. The boat has seven cameras for monitoring the entrances, and intruder alarm system. The following equipment is also onboard: immersion suits, swimming vest, 4 life rings, 4

life rafts each for 10 people, 2 embarkation ladders.

Broker Comments

Designed by Frank Mulder and with an interior by Art-Line, BLUE MAMBA is a very stylish yacht inside and out. Both contemporary and innovative, the interior has accommodation for 12 guests in 6 cabins. She looks fast and she is fast, able to reach a maximum speed of 28 knots. Bow and stern thrusters ensure that she is easily maneuverable.

Исключения

При продаже яхты исключаются личные вещи владельца.

Отказ от ответственности

Компания предоставляет описание судна или яхты добросовестно, но не может гарантировать точность этой информации, а также не ручается за техническое состояние. Покупатель должен проинструктировать своих агентов или оценщиков исследовать представленную информацию более подробно, по собственному желанию. Продажа судна или яхты, изменение цены или снятие с продажи будет происходить без предварительного уведомления.

ФОТОГРАФИИ

Aft Deck



TV Theater



Dining



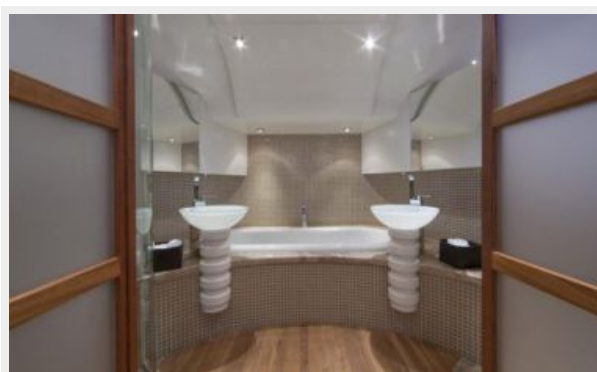
Galley



Master Stateroom



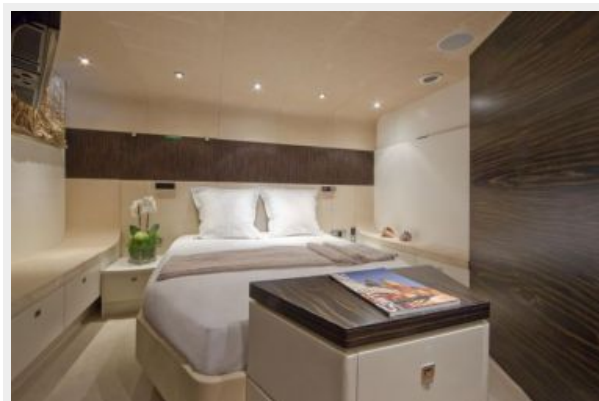
Master Bath



VIP Stateroom



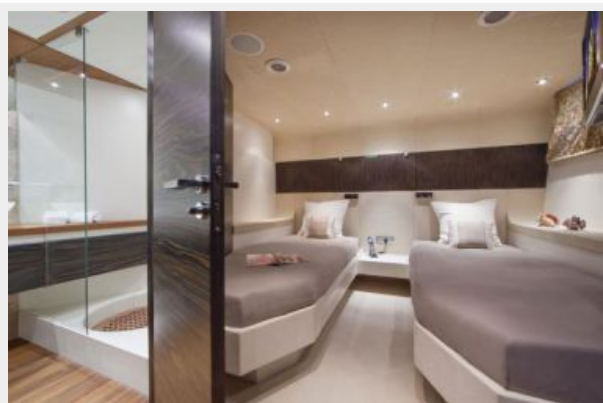
Guest Double Stateroom



Guest Bath



Guest Twin Stateroom



Pilothouse



Flybridge Helm



Flybridge



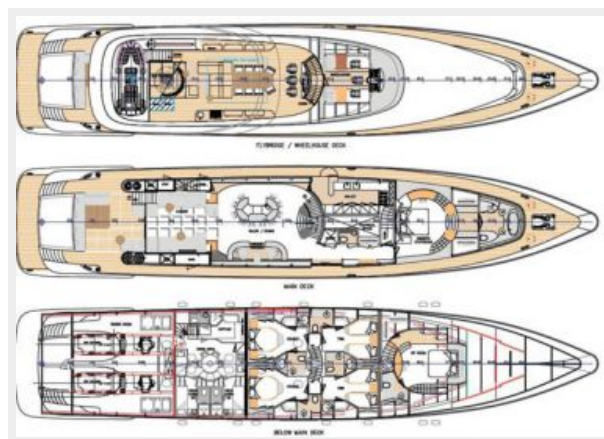
Jacuzzi



Engine Room



GA



КОНТАКТЫ

Андрей Шестаков (Andrey Shestakov) – ведущий яхтенный брокер отдела продаж яхт и судов компании Shestakov Yacht Sales Inc. Официальный представитель Shestakov Yacht Sales Inc. для русскоговорящих клиентов в центральном офисе компании в Майами/Форт Лодердейл/Флорида/США.

Контактная информация

Email: andrey@shestakovyachtsales.com

Web: shestakovyachtsales.com

Телефоны

Краснодарский край: **+7(918)465-66-44**

США, Майами, Флорида: **+1(954)274-4435**

Время работы

Понедельник – Суббота: **9:00 - 21:00**
EDT

Воскресенье: **Закрето**

Адрес



Harbour Towne Marina, 850 NE 3rd St,
STE 213, Dania, FL 33004