

NEVER SATISFIED, II — CONTENDER



Builder: CONTENDER

LOA: 36' 0" (10.97m)

Year Built: 2006

Beam: 10' 2" (3.10m)

Model: Center Console

Price: PRICE ON APPLICATION

Location: United States

Our experienced yacht broker, Andrey Shestakov, will help you choose and buy a yacht that best suits your needs **Never Satisfied, II — CONTENDER** from our catalogue. Presently, at Shestakov Yacht Sales Inc., we have a wide variety of yachts available on our sale's list. We also work in close contact with all the big yacht manufacturers from all over the world.

If you would like to buy a yacht **Never Satisfied, II — CONTENDER** or would like help answering any questions concerning purchasing, selling or chartering a yacht, please call **+1(954)274-4435**

TABLE OF CONTENTS

TABLE OF CONTENTS	2
SPECIFICATIONS	3
Overview	3
Basic Information	3
Dimensions	3
Speed, Capacities and Weight	3
Hull and Deck Information	3
Engine Information	3
DETAILED INFORMATION	4
Accommodations & Options	4
Electronics	4
Exclusions	4
Disclaimer	4
PHOTOS	6
CONTACTS	11
Contact details	11
Telephones	11
Office hours	11
Address	11

SPECIFICATIONS

Overview

For the 36 Contender buyer, please find 'Never Satisfied' a fresh to market 36 Contender center console. The name implies the current owners need to keep her in perfect shape, and clean as a pin for her vintage. Fresh Garmin electronics and Verado upgrades /maintenance make "Never Satisfied" a boat to be seriously looked at. Change in owners plans brings her to market bring your offers now!

Basic Information

Category: Center Console

Model Year: 2006

Year Built: 2006

Country: United States

Dimensions

LOA: 36' 0" (10.97m)

Beam: 10' 2" (3.10m)

Speed, Capacities and Weight

Displacement: 5600 Pounds

Fuel Capacity: 475 Gallons

Hull and Deck Information

Hull Material: Fiberglass

Engine Information

Engines: 3

Manufacturer: Mercury

Model: Verado

Engine Type: Outboard

Fuel Type: Gas/Petrol

DETAILED INFORMATION

Accommodations & Options

- White Hull and super structure, Royal blue gel bottom (no bottom paint)
- Triple axel aluminum trailer with recent tires, brakes and winch
- Lace on tee top with electronics Box
- 6 Rod holders on T top
- 3 side enclosure
- Keikafer k plane trip tabs
- Tilt steering
- Compass
- Low profile bow grab rail
- Leaning post/ bolster seats and cooler
- Fish box cushions
- (6)Rod holders
- BLY Kevlar retractable outriggers
- LED lighting
- Spreader lights
- Live well
- Saltwater wash down
- Forward above deck fish coffin

Electronics

- Garmin touch screen plotter new 2013
- Garmin GMR 624 HD2 6kw radar with open antenna new 2013
- Garmin GSD 24 Sounder 1 KW airmar transducer new 2013
- Stereo Blue tooth ready speaker and amp new 2013
- (2) Icom VHF radios with external speaker and antennas new 2013
- Auto pilot

Exclusions

Owner's personal belongings.

Disclaimer

The Company offers the details of this vessel or yacht in good faith but cannot guarantee or warrant the accuracy of this information nor warrant the condition of the vessel. A buyer should instruct his representatives, agents, or his surveyors, to investigate such details as the buyer

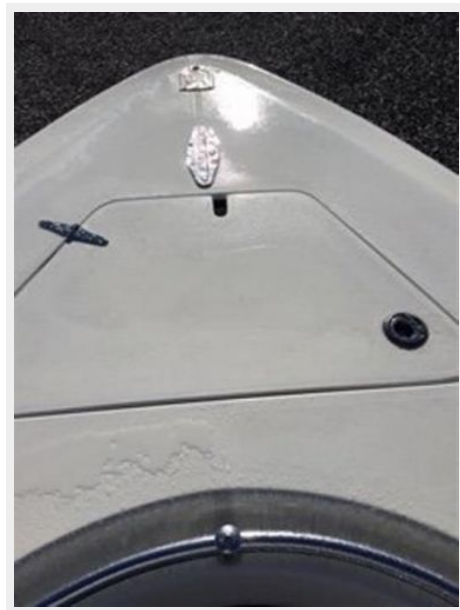
desires validated. This vessel or yacht is offered subject to prior sale, price change, or withdrawal without notice.

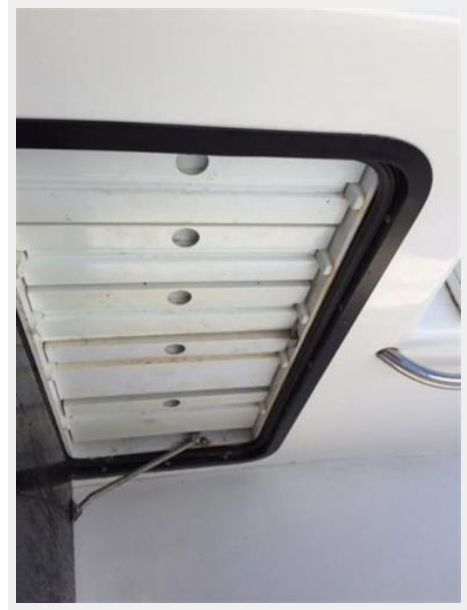
PHOTOS











CONTACTS

Andrey Shestakov, leading yacht broker of the sales department of Shestakov Yacht Sales Inc. Shestakov Yacht Sales Inc., the official representative of the Miami/Fort Lauderdale FL headquarters.

Contact details

Email: andrey@shestakovyachtsales.com

Web: shestakovyachtsales.com/en/

Telephones

USA: +1(954)274-4435

Office hours

Monday – Saturday: **9:00 - 21:00** EDT

Sunday: **closed**

Address



Harbour Towne Marina, 850 NE 3rd St,
STE 213, Dania, FL 33004