

PRIMETIME — HORIZON



Builder: HORIZON

Year Built: 2006

Model: Motor Yacht

Price: PRICE ON APPLICATION

Location: United States

LOA: 82' 0" (24.99m)

Beam: 20' 0" (6.10m)

Min Draft: 5' 5" (1.65m)

Max Draft: 6' 0" (1.83m)

Cruise Speed: 17 Kts. (20 MPH)

Max Speed: 21 Kts. (24 MPH)

Our experienced yacht broker, Andrey Shestakov, will help you choose and buy a yacht that best suits your needs **Primetime — HORIZON** from our catalogue. Presently, at Shestakov Yacht Sales Inc., we have a wide variety of yachts available on our sale's list. We also work in close contact with all the big yacht manufacturers from all over the world.

If you would like to buy a yacht **Primetime — HORIZON** or would like help answering any questions concerning purchasing, selling or chartering a yacht, please call **+1(954)274-4435**

TABLE OF CONTENTS

TABLE OF CONTENTS	2
SPECIFICATIONS	4
Overview	4
Basic Information	5
Dimensions	5
Speed, Capacities and Weight	5
Accommodations	5
Hull and Deck Information	6
Engine Information	6
PHOTOS	7
Port Aft	7
Starboard	7
Port	7
Bow	7
Teak	7
Skylounge Sundeck	7
Skylounge Sundeck	8
Aft Deck	8
Aft Deck	8
Saloon	8
Saloon	8
Galley	8
Galley	9
Master	9
Master	9
Master	9
VIP	10
VIP	10

Guest Twin	10
Pilothouse	10
Pilothouse	10
Pilothouse	10
Pilothouse	11
Engine Room	11
CONTACTS	12
Contact details	12
Telephones	12
Office hours	12
Address	12

SPECIFICATIONS

Overview

Vessel Walkthrough This 82 Horizon is accessed from a large functional swim platform with curved steps from both port and starboard up to the aft deck. The teak aft deck has seating for 8, a storage locker, flat panel TV, and docking station. There are curved stainless steel sliding doors accessing the salon.

Entering the saloon the you immediately notice the beautiful wood work, coupled with large windows, light tan carpeting, sizeable L-shaped sofa, a flat panel TV with actuated lift, and a high end AV system. The salon also features a custom fully equipped granite wet bar and the day head is forward. Aft to the port corner is a curved staircase providing access to the captain/crew quarters and engine room.

The fully functional galley is located forward of the salon. The galley has huge refrigeration/freezer space, while still offering a spacious feel and large U-shaped dining area forward that features marble counter tops. There are curved teak steps to the pilothouse and a companionway stairwell to the owner and guest staterooms forward. The owner's stateroom features a full beam layout with a centerline king berth, vanity to port, and a settee to starboard. There is a large walk-in closet that features the ship's safe. There is a smaller closet to port and a flat panel TV mounted on the forward bulkhead. The owner's stateroom also boasts his/her marble and granite heads separated by a large spacious centerline shower.

The companionway leads forward where there is a washer/dryer unit located on the port side and a wine cooler. The twin guest cabin is also on the port side. This elegant stateroom has its own hanging locker, drawer storage, and marble/granite head with shower stall.

The VIP cabin is located forward and features a walk around queen berth, (2) hanging lockers, under berth storage and adequate drawer/locker stowage. The VIP also has a marble/granite head with a large shower stall. All guest rooms have their own TV and entertainment centers.

The crew quarters are located aft and can be accessed from either the water tight transom door on the swim platform or from the curved stairway from the salon. The crew area is equipped with a double berth cabin, a bunk cabin, and a full granite head with shower. The crew area is completely finished out and shows as nice as the rest of the viewable areas of the boat. There is a second washer/dryer arrangement in the crew quarters and another safe as well.

The Skylounge offers a leather L-shaped settee with hi-lo dining table, 42 inch actuated lift flat screen, 2 storage cabinets, and large windows allowing substantial vision for the captain and guests. Walking through the double doors to the Skylounge sundeck you notice a unique seating area with tables comfortably seating 8 guests. The sundeck also features a wet bar with a refrigerator, icemaker, flat screen TV, sink, and storage lockers. Primetime is kept in mint condition and all systems are on a strict maintenance program.

Basic Information

Category: Motor Yacht

Sub Category: Pilothouse

Model Year: 2007

Year Built: 2006

Country: United States

Vessel Top: 2358

Dimensions

LOA: 82' 0" (24.99m)

Beam: 20' 0" (6.10m)

Min Draft: 5' 5" (1.65m)

Max Draft: 6' 0" (1.83m)

Speed, Capacities and Weight

Cruise Speed: 17 Kts. (20 MPH)

Max Speed: 21 Kts. (24 MPH)

Displacement: 165000 Pounds

Gross Tonnage: 82 Pounds

Water Capacity: 418 Gallons

Holding Tank: 300 Gallons

Fuel Capacity: 2750 Gallons

Accommodations

Total Cabins: 3

Total Berths: 4

Sleeps: 6

Total Heads: 4

Captain Cabin: True

Crew Cabin: 2

Crew Berths: 3

Crew Sleeps: 4

Crew Heads: 1

Hull and Deck Information

Hull Material: Fiberglass

Deck Material: Teak over Fiberglass

Hull Configuration: Semi-Displacement

Engine Information

Engines: 2

Manufacturer: Caterpillar

Model: C 30

Engine Type: Inboard

Fuel Type: Diesel

PHOTOS

Port Aft



Starboard



Port



Bow



Teak



Skylounge Sundeck



Skylounge Sundeck



Aft Deck



Aft Deck



Saloon



Saloon



Galley



Galley



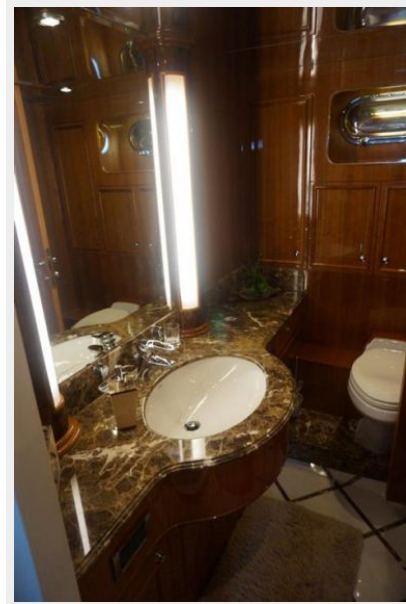
Master



Master



Master



VIP



VIP



Guest Twin



Pilothouse



Pilothouse



Pilothouse



Pilothouse



Engine Room



CONTACTS

Andrey Shestakov, leading yacht broker of the sales department of Shestakov Yacht Sales Inc. Shestakov Yacht Sales Inc., the official representative of the Miami/Fort Lauderdale FL headquarters.

Contact details

Email: andrey@shestakovyachtsales.com

Web: shestakovyachtsales.com/en/

Telephones

USA: +1(954)274-4435

Office hours

Monday – Saturday: **9:00 - 21:00** EDT

Sunday: **closed**

Address



Harbour Towne Marina, 850 NE 3rd St,
STE 213, Dania, FL 33004