

SWANSONG II — RIVOLTA YACHTS



Builder: RIVOLTA YACHTS

Year Built: 2005

Model: Cruiser

Price: PRICE ON APPLICATION

Location: United States

LOA: 40' 0" (12.19m)

Beam: 12' 5" (3.78m)

Max Draft: 1' 6" (0.46m)

Cruise Speed: 35 Kts. (40 MPH)

Max Speed: 40 Kts. (46 MPH)

Our experienced yacht broker, Andrey Shestakov, will help you choose and buy a yacht that best suits your needs **Swansong II — RIVOLTA YACHTS** from our catalogue. Presently, at Shestakov Yacht Sales Inc., we have a wide variety of yachts available on our sale's list. We also work in close contact with all the big yacht manufacturers from all over the world.

If you would like to buy a yacht **Swansong II — RIVOLTA YACHTS** or would like help answering any questions concerning purchasing, selling or chartering a yacht, please call **+1(954)274-4435**

TABLE OF CONTENTS

TABLE OF CONTENTS	2
SPECIFICATIONS	4
Overview	4
Basic Information	5
Dimensions	5
Speed, Capacities and Weight	5
Accommodations	5
Hull and Deck Information	5
Engine Information	6
DETAILED INFORMATION	7
Overview	7
Description	7
Galley	8
Master Stateroom	8
Master Head	9
Guest Stateroom/Mid Ship	9
Helm	9
Electronics	10
Electrical System	10
Mechanical Equipment	11
Cockpit	11
Decks	11
Hull	11
Engine Room	12
Extra Options	12
Exclusions	12
Exclusions	12
Disclaimer	13

PHOTOS	14
Master Stateroom	14
Master Stateroom	14
Master Stateroom	14
Bow Thruster	14
CONTACTS	15
Contact details	15
Telephones	15
Office hours	15
Address	15

SPECIFICATIONS

Overview

This 2005 Rivolta 40' Diesel Coupe Picnic Boat is brand new to our market place. Swansong II boasts; loaded Electronics, AC/Heated Helm area, beautiful Italian design and woodwork, SAT TV, two VIP Staterooms, and a Gourmet Galley. A new Generator helps make this Rivolta 40' Coupe lead the Picnic boat Market.

Envision a 2005 yacht with all new interior, new 6KW Northern Lights Generator (5 yr warranty), all new 8K (galley and master suite) & 16K (salon and helm area) Domestic A/C units and controls with new duct system (3 yr warranty), new refrigerator & toaster oven, new ice maker & aft deck freezer, new auto pilot hydraulic drive and M81120 Raymarine Drive pump, new Clarion Mdl 40xc6610 Amp and aft deck speakers, and all new fresh water head pumps and fresh bottom paint in 2014.

Rivolta Yachts are manufactured in Sarasota, Florida by a world famous Italian family that has awesome quality design and marine engineering experience for many years. Rivolta is noted to be an over the top Yacht and fast Automobile company. The Rivolta 40' Coupe is an incredible stable yacht. The Coupe is a dry riding diesel jet propulsion Picnic Boat that rivals all other Picnic boats and builders in the US. Swansong II is being offered to the discriminating yachtsman looking for a very nice Diesel Picnic yacht, located on the Tennessee River and all ready for your inspection.

Midyear 2014, Swansong II was anchored at the beach and several wakes from passing by yachts on the river partially submerged Swansong II while at the beach. The seller immediately responded within hours to correct this event with professional marine service support.

Today, Swansong II has completed a refit to correct the known effected parts from that event. All records from this event are available to an interested party. Aqua Yacht Service Center took the lead and did all the planning and service work on Swansong II. Aqua Yacht Harbor builds a strong track record of first-class marine technical service as a Full Service Boat Yard. Their team of seasoned technicians boasts a wide array of manufacturer service certifications from the top brands in the industry, and has the real world experience to meet each owner's expectations, no matter the scope of the job. From basic detailing to bottom painting, to a stern to stern yacht rehab, from engine tune ups to full repowers.

Tom Snyder (662-423-2222 Ex 12), Service Manager for Aqua Marine lead the team of Aqua Marine techs taking care of all the needs for this owner. Lots of time and experience went back into Swansong II from the Aqua Marine service team. Please feel free to reach out to Tom if you have any questions or concerns with Swansong II.

Swansong II is all ready for your private inspection and can be easily shown anytime. Her sparkling Navy Blue Hull and beautiful Italian wood interior is a real head turner on the water underway and at any marina. Swansong II always turns heads because she is like no other

picnic boat with her magnificent navy blue hull, her white top, and Italian wood joinery work and sleek finishing lines...

Come see all the new updates on Swansong II soon because she won't last very long. This will be the next Rivolta 40' Coupe sold.

All offers will be considered.

Basic Information

Category: Cruiser

Model Year: 2005

Year Built: 2005

Country: United States

Dimensions

LOA: 40' 0" (12.19m)

Beam: 12' 5" (3.78m)

Max Draft: 1' 6" (0.46m)

MFG Length: 41' 0" (12.50m)

Speed, Capacities and Weight

Cruise Speed: 35 Kts. (40 MPH)

Max Speed: 40 Kts. (46 MPH)

Displacement: 20000 Pounds

Water Capacity: 137 Gallons

Holding Tank: 40 Gallons

Fuel Capacity: 362 Gallons

Accommodations

Total Cabins: 2

Hull and Deck Information

Hull Material: Fiberglass

Engine Information

Engines: 2

Manufacturer: Yanmar

Model: 6LPA-STP

DETAILED INFORMATION

Overview

BELISIMO (Beautiful in Italian) best describes this 40' Coupe Jet Rivolta picnic boat... Sleek and sexy, "Swansong II" is the ultimate boat!! Jet Drives for shallow drafts (21"), Air Conditioned Helm and Seating Area, Teak Decks, Joy Stick Controls for ease of docking, Satellite TV, Great Electronics, Walk Around Master Stateroom, Gourmet Galley, Separate Built-In Freezer, Walk-Through Transom Door, Large Swim Platform and Ladder. Quality craftsmanship, soft ride, elegance, flagship of the Rivolta production makes "Swansong II" a fun vessel to cruise, dive and fish.. DON'T LET THIS BEAUTY GET AWAY..

Many Updated Systems in 2014, call for a detailed list!

Description

This 2005 Rivolta 40' Diesel Coupe Picnic Boat is brand new to our market place. Swansong II boasts; loaded Electronics, AC/Heated Helm area, beautiful Italian design and woodwork, SAT TV, two VIP Staterooms, and a Gourmet Galley. A new Generator helps make this Rivolta 40' Coupe lead the Picnic boat Market.

Envision a 2005 yacht with all new interior, new 6KW Northern Lights Generator (5 yr warranty), all new 8K (galley and master suite) & 16K (salon and helm area) Domestic A/C units and controls with new duct system (3 yr warranty), new refrigerator & toaster oven, new ice maker & aft deck freezer, new auto pilot hydraulic drive and M81120 Raymarine Drive pump, new Clarion Mdl 40xc6610 Amp and aft deck speakers, and all new fresh water head pumps and fresh bottom paint in 2014.

Rivolta Yachts are manufactured in Sarasota, Florida by a world famous Italian family that has awesome quality design and marine engineering experience for many years. Rivolta is noted to be an over the top Yacht and fast Automobile company. The Rivolta 40' Coupe is an incredible stable yacht. The Coupe is a dry riding diesel jet propulsion Picnic Boat that rivals all other Picnic boats and builders in the US. Swansong II is being offered to the discriminating yachtsman looking for a very nice Diesel Picnic yacht, located on the Tennessee River and all ready for your inspection.

Midyear 2014, Swansong II was anchored at the beach and several wakes from passing by yachts on the river partially submerged Swansong II while at the beach. The seller immediately responded within hours to correct this event with professional marine service support.

Today, Swansong II has completed a refit to correct the known effected parts from that event. All records from this event are available to an interested party. Aqua Yacht Service Center took the lead and did all the planning and service work on Swansong II. Aqua Yacht Harbor builds a

strong track record of first-class marine technical service as a Full Service Boat Yard. Their team of seasoned technicians boasts a wide array of manufacturer service certifications from the top brands in the industry, and has the real world experience to meet each owner's expectations, no matter the scope of the job. From basic detailing to bottom painting, to a stern to stern yacht rehab, from engine tune ups to full repowers.

Tom Snyder (662-423-2222 Ex 12), Service Manager for Aqua Marine lead the team of Aqua Marine techs taking care of all the needs for this owner. Lots of time and experience went back into Swansong II from the Aqua Marine service team. Please feel free to reach out to Tom if you have any questions or concerns with Swansong II.

Swansong II is all ready for your private inspection and can be easily shown anytime. Her sparkling Navy Blue Hull and beautiful Italian wood interior is a real head turner on the water underway and at any marina. Swansong II always turns heads because she is like no other picnic boat with her magnificent navy blue hull, her white top, and Italian wood joinery work and sleek finishing lines...

Come see all the new updates on Swansong II soon because she won't last very long. This will be the next Rivolta 40' Coupe sold.

All offers will be considered.

Galley

- (2) burner glass top stove
- Tappan microwave - (built-in)
- Double stainless steel sink
- Corian counter tops
- 3.8 cu. ft. AC/DC refrigerator/freezer
- Extra storage cabinets
- Port hole
- Under cabinet lighting also overhead lighting
- Extra storage drawers
- Teak & Holly sole deck
- Custom glass built-in holders
- Great counter space for Gourmet preparation
- Cabin headroom -(6'3")

Master Stateroom

- Teak & Holly soles
- Beautiful Cherry wood work craftsmanship
- 20" Flat screen TV/Satellite TV direct

- Overhead lighting
- Two overhead hatches and portholes
- Two large hanging lockers - cedar lined
- Storage under berth - hydraulically lifted
- Queen walk around berth centerline - (6.75" x 5.75")
- Good headroom clearance
- (2) Large storage drawers
- Reading lights
- Shelf areas around berth
- Sliding privacy door
- **Huge under berth storage compartment**

Master Head

- Large room
- Tecma porcelain freshwater head
- Sink
- Shower
- Porthole
- Overhead lighting
- Extra storage
- Great counter space
- Vacuflush head w/over board discharge or holding tank w/macerator pump

Guest Stateroom/Mid Ship

- Double berth - (6'9" x 4'6")
- Teak & Holly sole deck
- Extra storage
- Hanging locker
- Reading light
- Good size storage shelf
- Electric berth lift for more storage

Helm

- AC- Helm w/controls
- Helm ice maker
- Low level lighting
- 2 x overhead hatches
- Overhead lighting

- Yanmar controls for engines
- Starboard & Port helm seats
- Under seat storage
- Chart table
- Electric windshield vent - center opening
- (2) Large facing settees w/ Teak tables
- (3) AC vents

Electronics

- Raymarine E120 Plotter
- Raymarine E120 Radar
- Raymarine E120 Sonar
- Raymarine TriData digital depth/sounder
- Raymarine ST8002 auto pilot
- Clarion AM/FM/CD remote w/3 speakers
- Trim tabs controls/indicator
- Full array Yanmar controls
- Windlass remote
- **ULTRA JET JOY STICK CONTROL**
- Auto spot light
- Chart map light
- Nav light red overhead
- Satellite TV
- Ratheon VHF
- 4KW Radar Radome

Electrical System

- 2 x 30 Amp shore power
- 110 Volt & 12 volt
- (4) Batteries - (Group 27)
- **New 2014 Northern Lights 6KW Generator, (6 hours total), warranty w/ sound enclosure remote control panel**
- (1) 16,000 BTU AC pilot cabin area reverse heat
- (1) 7,000 BTU AC cabin area reverse heat
- 40 Amp auto battery charger
- AC/DC distribution panel
- Battery selector switches
- Electric windlass
- Electric bow thruster

Mechanical Equipment

- (2) Strut auto engine hatch - "hydraulic"
- Auto anchor winch/Bruce 33KG plow anchor
- Electric windshield vent
- Hydraulic bow thruster
- Livorsi Zero effort controls
- Fresh water washdown

Cockpit

- 6) Rocket launchers
- (4) Rod holders
- (2) Storage Lazarettes
- (1) Built-in livewell
- Walk-thru transom
- Teak cockpit
- Removeable cockpit bench seating (8 persons)
- Transom pressurized freshwater system
- Self draining cockpit
- Spreader lights
- New canvas cover (2012)
- Built in electric cooler and freezer

Decks

- Pop-up cleats
- Transom door
- Two-tone gel coat
- Full canvas covers, windshield & cockpit enclosures
- Cockpit & Transom lighting
- 316L Stainless steel
- Stainless Steel Ski tow rings
- Wide Gunnel side decks - (non-skid)
- Spot light, Radar Arch
- Full detail completed in 2014
- Painted outside hull in 2014

Hull

- New paint 2014

- Hull color, Navy Blue
- Solid fiberglass bottom and paint
- Painted bilge
- Vacuumed bagged lay-up construction
- **Underwater lights (2012)**

Engine Room

- Yanmar 440 hp w/819 hours
- ZF Transmission
- Oil change system (Quick Drane)
- Twin Ultra Jet 305/Jet Drives
- 28-30 Knott Cruise burning around 35 gph
- Composite insulation barrier
- Halon system
- Dual Racor fuel filters
- Electric engine hatch lift
- Painted engine room
- Full service on engines (2014)

Extra Options

- Freezer box - cockpit
- Aerated bait well
- Underwater lights
- Ice maker - helm area
- Satellite TV
- (6) Rocket launchers
- Rod holders
- Removable cockpit seating
- Extra grab rails
- Extra drink holders
- Custom galley cabinets/lighting

Exclusions

Seller's personal items

Exclusions

Owner's personal belongings.

Disclaimer

The Company offers the details of this vessel or yacht in good faith but cannot guarantee or warrant the accuracy of this information nor warrant the condition of the vessel. A buyer should instruct his representatives, agents, or his surveyors, to investigate such details as the buyer desires validated. This vessel or yacht is offered subject to prior sale, price change, or withdrawal without notice.

PHOTOS

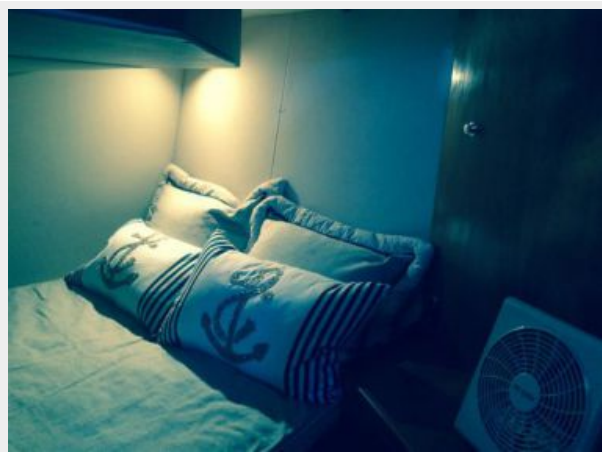
Master Stateroom



Master Stateroom



Master Stateroom



Bow Thruster



CONTACTS

Andrey Shestakov, leading yacht broker of the sales department of Shestakov Yacht Sales Inc. Shestakov Yacht Sales Inc., the official representative of the Miami/Fort Lauderdale FL headquarters.

Contact details

Email: andrey@shestakovyachtsales.com

Web: shestakovyachtsales.com/en/

Telephones

USA: +1(954)274-4435

Office hours

Monday – Saturday: **9:00 - 21:00** EDT

Sunday: **closed**

Address



Harbour Towne Marina, 850 NE 3rd St,
STE 213, Dania, FL 33004