

"DOUBLE VISION" — LAGOON



Builder: LAGOON

Year Built: 2004

Model: Catamaran

Price: PRICE ON APPLICATION

Location: United States

LOA: 38' 0" (11.58m)

Beam: 21' 11" (6.68m)

Cruise Speed: 6 Kts. (7 MPH)

Max Speed: 7 Kts. (8 MPH)

Our experienced yacht broker, Andrey Shestakov, will help you choose and buy a yacht that best suits your needs "Double Vision" — LAGOON from our catalogue. Presently, at Shestakov Yacht Sales Inc., we have a wide variety of yachts available on our sale's list. We also work in close contact with all the big yacht manufacturers from all over the world.

If you would like to buy a yacht "Double Vision" — LAGOON or would like help answering any questions concerning purchasing, selling or chartering a yacht, please call +1(954)274-4435

TABLE OF CONTENTS

TABLE OF CONTENTS	2
SPECIFICATIONS	3
Overview	3
Basic Information	5
Dimensions	5
Speed, Capacities and Weight	5
Accommodations	6
Hull and Deck Information	6
Engine Information	6
PHOTOS	7
CONTACTS	11
Contact details	11
Telephones	11
Office hours	11
Address	11

SPECIFICATIONS

Overview

Double Vision Is A 2004 Lagoon 380 Owners Layout That Has Spent It's Entire Life In Fresh Water!

She Is Owned By A Professional Captain Who Has Used Her Lightly In His Captained Only Day Charter Business On Lake Travis In Austin, TX. Owner Will Consider Moving Her Back To The Gulf Coast Of Texas. April 2010:New Hard Top Installed, Salon Table Converted To Berth,Bottom Paint,Wax And Zincs Renewed. **Accommodations** She is a three cabin two head owner's layout

- Cat Rig
- Aft Cockpit
- 3 Staterooms
- 4 Berths(Salon Table Converts to Berth)
- Sleeps 8
- 2 Heads

Galley

- Combo Refrigerator / Freezer
- 2 Burner Gas Stovetop / Oven

Electrical

- Ships Power 12v & 110/220v
- Automatic Battery Charger
- Shore Power 50 Amps

Electronics and Navigational Equipment

- Size 1 Magnetic Compass
- Size 1 Digital Compass
- VHF
- Autopilot
- Speed Log
- Depth Sounder
- Distance Log
- Wind Speed / Direction Indicator
- 17" Flat Panel TV
- 12v DVD

Deck and Hull

- Catamaran Hull Configuration
- Composite Hull Material
- Fiberglass Deck Material
- Gelcoat Hull Finish
- White Hull Color
- Hull ID#270
- Spreader Lights
- Windlass
- 6 Dock Lines
- 6 Fenders
- Anchor Locker
- 40lb Fortress Anchor w/ 100' Chain And 100' Rode

Sails, Spars and Rigging

- Standing Rigging
- Main
- Genoa
- Stepped On Deck
- Schafer Roller Furling Jib
- Mainsheet Traveler

Engine

- Twin Volvo In Board Diesel Model#MD2030 Fixed Pitch Prop Sail-Drive 27 Horse Power 2004

Mechanical and Plumbing

- Hydraulic Steering
- Cruise Air 16k BTU A/C
- Automatic Bilge Pump
- Emergency Bilge Pump
- Norpro 5.5kw Generator 330 hrs

Additional Features and Upgrades

- Electric Heads 2
- AM/FM/SAT/CD Stereo Upgrade
- Automatic Bilge System
- Tank Monitoring System On Water & Heads
- Custom Hard Top Bimini

- Custom Lazy Bag Sail Cover
- New Custom Trampoline
- New Microwave
- Dual A/C System 16k BTU Salon & 10k BTU Aft Cabin

Disclaimer The Company offers the details of this vessel in good faith but cannot guarantee or warrant the accuracy of this information nor warrant the condition of the vessel. A buyer should instruct his agents, or his surveyors, to investigate such details as the buyer desires validated. This vessel is offered subject to prior sale, price change, or withdrawal without notice.

Basic Information

Category: Catamaran

Model Year: 2004

Year Built: 2004

Country: United States

Dimensions

LOA: 38' 0" (11.58m)

LWL: 36' 8" (11.18m)

Beam: 21' 11" (6.68m)

Clearance: 56' 11" (17.35m)

Speed, Capacities and Weight

Cruise Speed: 6 Kts. (7 MPH)

Cruise Speed RPM: 2200 Kts.

Max Speed: 7 Kts. (8 MPH)

Max Speed RPM: 3000 Kts.

Displacement: 16000 Pounds

Water Capacity: 180 Gallons

Holding Tank: 20 Gallons

Fuel Capacity: 50 Gallons

Accommodations

Total Cabins: 3

Total Berths: 4

Sleeps: 8

Total Heads: 2

Hull and Deck Information

Hull Material: Fiberglass

Engine Information

Engines: 2

Manufacturer: Volvo

Model: MD2030

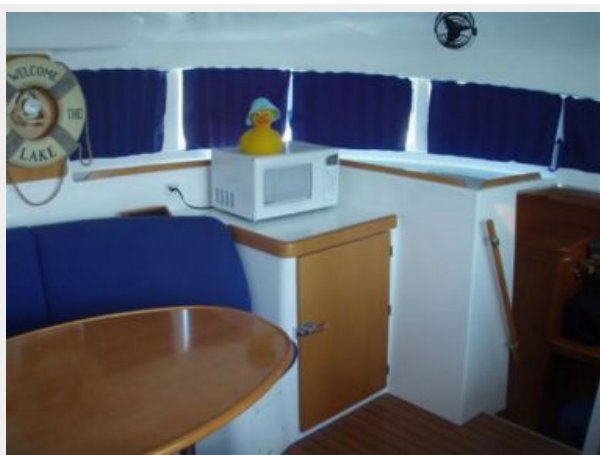
Engine Type: Inboard

Fuel Type: Diesel

PHOTOS









CONTACTS

Andrey Shestakov, leading yacht broker of the sales department of Shestakov Yacht Sales Inc. Shestakov Yacht Sales Inc., the official representative of the Miami/Fort Lauderdale FL headquarters.

Contact details

Email: andrey@shestakovyachtsales.com

Web: shestakovyachtsales.com/en/

Telephones

USA: +1(954)274-4435

Office hours

Monday – Saturday: **9:00 - 21:00** EDT

Sunday: **closed**

Address



Harbour Towne Marina, 850 NE 3rd St,
STE 213, Dania, FL 33004