

REEL HAPPY — BERTRAM



Builder: BERTRAM

Year Built: 2013

Model: Sport Fisherman

Price: PRICE ON APPLICATION

Location: United States

LOA: 64' 0" (19.51m)

Beam: 18' 2" (5.54m)

Max Draft: 5' 5" (1.65m)

Cruise Speed: 32 Kts. (37 MPH)

Max Speed: 40 Kts. (46 MPH)

Our experienced yacht broker, Andrey Shestakov, will help you choose and buy a yacht that best suits your needs **Reel Happy — BERTRAM** from our catalogue. Presently, at Shestakov Yacht Sales Inc., we have a wide variety of yachts available on our sale's list. We also work in close contact with all the big yacht manufacturers from all over the world.

If you would like to buy a yacht **Reel Happy — BERTRAM** or would like help answering any questions concerning purchasing, selling or chartering a yacht, please call **+1(954)274-4435**

TABLE OF CONTENTS

TABLE OF CONTENTS	2
SPECIFICATIONS	3
Basic Information	3
Dimensions	3
Speed, Capacities and Weight	3
Accommodations	3
Hull and Deck Information	3
Engine Information	4
DETAILED INFORMATION	5
STANDARD FEATURES OF THE BERTRAM 64	5
OPTIONS	7
Exclusions	8
Disclaimer	8
PHOTOS	9
CONTACTS	22
Contact details	22
Telephones	22
Office hours	22
Address	22

SPECIFICATIONS

Basic Information

Category: Sport Fisherman

Sub Category: Convertible

Model Year: 2013

Year Built: 2013

Country: United States

Dimensions

LOA: 64' 0" (19.51m)

Beam: 18' 2" (5.54m)

Max Draft: 5' 5" (1.65m)

Speed, Capacities and Weight

Cruise Speed: 32 Kts. (37 MPH)

Max Speed: 40 Kts. (46 MPH)

Displacement: 94711 Pounds

Water Capacity: 360 Gallons

Fuel Capacity: 1850 Gallons

Accommodations

Total Cabins: 4

Total Heads: 3

Hull and Deck Information

Hull Material: Fiberglass

Engine Information

Engines: 2

Manufacturer: MTU

Model: 16V2000 - 2200 HP

Engine Type: Inboard

Fuel Type: Diesel

DETAILED INFORMATION

STANDARD FEATURES OF THE BERTRAM 64

EXTERIOR FINISH • Maxguard (Premium ISO-NPG gelcoat) • BOMAR hatches powder coated to match gelcoat • Sprayed non-skid gelcoat deck surfaces • Blister resistant vinyl ester resin in hull bottom **HULL DECK AND FLYBRIDGE CONSTRUCTION** • Deck: hand laid-up molded fiberglass sandwich construction • Flybridge: hand laid-up molded fiberglass sandwich construction • Hull: hand laid-up molded fiberglass, solid bottom with cored hull-sides above the waterline, solid keel and chines **HULL** • Ball seacocks on all underwater thru-hull fittings, all with electrical bonding • Bertram dark blue waterline stripe • Dark blue anti-fouling bottom paint • Common drain system • Freshwater tank • Fuel tank: FRP, zero trim effect (midship mounted) with fuel level sight glass • Holding tank: with liquid level monitors and plumbed for dockside pump out • Linear exhaust muffler system • Recessed transom swim/emergency steps • Sump tank with automatic pump-out for shower and sink • Zincs, transom mounted **DECK** • Anchor locker • Bow pulpit with windlass • Anchor: Delta 55 lbs. with chain and line • Wash down faucet (foredeck) • Anodized aluminum bow rail with burgee staff • Cleats: 2 forward, 2 aft with transom hawse pipes, 4 spring line • Compressed heavy-duty white vinyl rubrail with solid stainless steel insert • Fuel fills, port and starboard • Fuel fill alarm • Freshwater tank fill • Hatches over engines for ease of engine access • Powder coated aluminum handrails on pilaster • Powder coated aluminum handrails over side windows **COCKPIT** • Mezzanine Deck • Access hatches to lazarette, gasketed, scuppered, and dogged • Cockpit coaming padding • Dockside electrical connection, (2) 50 AMP/220V (Two Glenndinning CableMaster, standard) • Dockside water connection with pressure reducing valve • Doors, port and starboard, to conceal shore power inlets, dockside water inlet, faucets and switches • Engine room access door, with ladder to engine room, lockable • Fire extinguisher manual controls • Wash down, Freshwater • Wash down, Saltwater • Lighting: Cockpit • Live well in mezzanine deck • Molded boarding steps (port & starboard) • Molded fiberglass spiral stairway with teak covered steps to flybridge • Molded rod compartment, with wash down (lighted) • Cockpit freezer • Reinforcement for fighting chair • Removable fish box with macerator pump • Rod holders (4) • Salon steps, teak covered and molded storage/tackle drawer • Self-bailing cockpit with large scuppers • Stereo speakers, watertight • Transom door and gate • Transom fish box insulated, with overboard drain • Under gunwale storage for boat hook and gaff **FLYBRIDGE** • Stereo with watertight speakers • Basic electronics • Stainless steel steering wheel • Systems monitors with audible alarms included in engine package • Instrument panel and planned electronic areas accessible from under console • Instrument panel with: tachometer, oil engine pressure, engine water temperature, gear, oil pressure, voltmeter, fuel level, switches and Fireboy discharge indicator • Console handrails, port, starboard and forward • Distribution panel in locker • Electronic controls • Engines synchronizer • Insulated cooler, sink with cold water faucet • International navigation lights • Molded footrest for helm seat • Seating: Teak helm and companion pedestal seats • Seating: U-shaped lounge forward of helm • Stereo and VHF locker • Storage: molded under seating, console, and cabinets • Air Horn: Kahlenberg® • Freezer/ Fridge **ENGINE COMPARTMENT AND FUEL SYSTEMS** • Twin diesel turbo-charged, fresh water cooled main engines with

marine gear, engine driven alternators, water separators/ fuel filters, & exhaust mufflers • Trolling valves • Aquamet shafts • Bronze rudders and struts • Dripless shaft seals • Dual fuel filters-main engines (4 total) • Air intake, hull sides • Emergency engine shut-down system • Acoustical and thermal insulation in the engine room • Vibration dampening isolators for engines • Automatic/Manual blower system for engine room • Bilge pumps; (4) auto/manual • Electric Hot Water Heater: 11 gal (2) • Emergency bilge water evacuation system, engine driven • Engine and machinery room lighting AC & DC • Engine room access ladder • Fixed fire extinguishing system for engine and machinery rooms with automatic and remote manual controls plus audible and visual discharge signals • Generator: 23 kW freshwater-cooled; remote start diesel generators with sound shields. (Generator may not supply power for all standard, optional and owner-added equipment. Power management maybe required.) • Fuel filters on generator supply • Hi gloss polyurethane finish • Hydraulic steering with power assist pump • Metered oil change system for engines, gear & generator with quick disconnect • Seacocks, heavy duty manganese bronze • Seawater strainers for generator, air conditioning and saltwater wash down pump

ELECTRICAL SYSTEMS - SALON • 240V/120V AC input and main distribution panel with voltmeter, ammeter, generator controls, magnetic circuit breakers and shore power selector switches • 24V/12V DC main distribution panel with voltmeter, ammeter, magnetic circuit breakers and batteries tester • Alarm Monitor: bilge flood signal for three compartments, black water tank indicator light, high-heat signal in engine and machinery rooms • Electrical pump-out for toilet holding tank • Fresh water level gauge • Light fixtures, 24V DC • Radio and cable television system with antenna and shore connection

ELECTRICAL SYSTEMS - GALLEY • 240V/120V AC appliances distribution panel with magnetic circuit breakers • 24V DC galley and cabins distribution panel • GFI receptacles

ELECTRICAL SYSTEMS - BRIDGE • 24V DC flybridge electronics accessory panel with magnetic circuit breakers in console • 12V DC flybridge electronics accessory panel with magnetic circuit breakers in console • Alarm Monitor: bilge flood signal for three compartments, black water tank indicator light, high-heat signal in engine and machinery rooms • Battery parallel switch, remote • Ground fault circuit interrupter receptacles in console • Main engine control panel • Omni directional TV antenna

ELECTRICAL SYSTEMS - ENGINE ROOM AND SYSTEMS ROOM • 24V DC batteries panel with switches for main engines and main battery disconnect switches • 24V DC fuses for uninterrupted power to bilge pumps, fire and bilge flood monitors • Air conditioning zoned direct expansion total 59,000 BTU • Batteries (6D), heavy duty, 1 bank 4 battery. Ea: house & 1 bank 2 battery. Ea: engines; 1 bank 12V generator • Battery chargers with thermal cutoff and switching system for complete integration and battery parallel system for main engines and generator • Bonding system, galvanic and electrical • Converters (1) 50 amp 24V; (1) 100 amp 24V, (1), 20 amp 12V • ELCI receptacles • Isoboost transformers (2) • Light fixtures, 120V AC/ 24V DC

SALON • Aluminum salon door with frameless glass • Fixed frameless windows with tinted safety glass, port and starboard • Removable frameless windows with tinted safety glass, aft • Entertainment center with 40" LED TV, AM/FM stereo receiver, CD/DVD player • Sofa • Cherry wood paneling with padded vinyl accents • Vinyl headliner (Whisper Wall System) • Wood blinds • Icemaker • Cocktail table • Carpeting with acoustic padding • 120V AC receptacles • Air conditioning electronic control • Central vacuum system • Electrical distribution panels • Lighting, 24V DC • Octoplex/Maretron monitoring of lights, bilges, and tanks

GALLEY/DINETTE • CORIAN® countertops and sinks • Sub-Zero drawer under counter refrigeration (4 Drawers) • Cooktop, four burners • Dishwasher (Fisher & Paykel®) •

Convection microwave oven • Single lever hot and cold faucet • Flooring, Amtico teak and holly • Designated storage for dishes & glasses • Dinette, U-shaped with storage and Cherry table • Storage over dinette, forward • Lighting, 24V DC • Vinyl headliner (Whisper Wall System)

COMPANIONWAY • Carpeting • Charts flat storage port and starboard • Flush panel doors to staterooms, starboard head and laundry locker • Lighting 24V DC • Awlgrip finished bilge storage compartment • Vinyl headliner and wall covering (Whisper Wall System) • Washer and dryer in locker with shelf **MASTER STATEROOM** • Queen-sized berth with drawer storage beneath • Mattress, innerspring with spread, pillows, and shams • Sheets/pillowcases, one set • Headboard with mirrors • Port and starboard nightstands with drawer • Combination wood paneling/padded vinyl wall covering (Whisper Wall System) • Entertainment center with 32" LED TV-AM/FM/CD/DVD/MP3 player • Hanging locker, Oversized, lighted cedar lined hanging locker (full and half length) • Carpeting • 120V AC receptacles • Air conditioning electronic control • Lighting, 24V DC • Reading lights • Vinyl headliner (Whisper Wall System) **STARBOARD GUEST STATEROOM** • Berths, twin, side by side with storage beneath • Mattress, innerspring with spread, pillows, and shams • Sheets/pillowcases, one set for each berth • Nightstand with drawer • Upper hullside cabinet storage • Four drawer dresser with shelf • Entertainment center with 19" LED TV-AM/FM/CD/DVD/MP3 player • Reading lights • Hanging locker, cedar lined with automatic light • 120V AC receptacles • Air conditioning electronic control • Carpeting • Lighting, 24V DC • Vinyl headliner and wall covering, padded (Whisper Wall System) **FORWARD GUEST STATEROOM** • Queen-sized berth with drawer storage beneath • Mattress, innerspring with spread, pillows, and shams • Sheets/pillowcases, one set • Entertainment center with 19" LED TV-AM/FM/CD/DVD/MP3 player • Hanging locker, cedar lined with automatic light (STBD only) • Hullside storage shelves • Upper cabinet storage, port & starboard • Reading lights • Opening hatch overhead with shade & screen • Air conditioning electronic control • Carpeting • Lighting, 24V DC • 120V AC GFI receptacles • Vinyl headliner and wall covering, padded (Whisper Wall System) **STARBOARD/CREW STATEROOM (OPTIONAL)** • Berths, upper & lower, with storage beneath lower berth • Mattress, innerspring with spread, pillows, and shams • Sheets/pillowcases, one set for each berth • Hanging locker, cedar lined with automatic light • Air conditioning electronic control • Carpeting • Lighting, 24V DC • 120V AC receptacles • Vinyl headliner and wall covering, padded (Whisper Wall System) **MASTER HEAD • CORIAN®** countertop and sink • Flooring, Amtico teak and holly • Mirrored overhead • Stall shower with door and automatic sump pump • Tecma® electric toilet system (freshwater) • Towel bar • Upper cabinets' with mirrored doors • Exhaust blowers • 120V AC GFI receptacles • Lighting, 24V DC **STARBOARD GUEST HEAD • CORIAN®** countertop and sink • Mirrored overhead • Stall shower with door and automatic sump pump • Tecma® electric toilet system (freshwater) • Towel bar • Upper cabinets' with mirrored doors • Exhaust blowers • 120V AC GFI receptacles • Lighting, 24V DC **PORT GUEST HEAD • CORIAN®** countertop and sink • Flooring, Amtico teak and holly • Mirrored overhead • Stall shower with door and automatic sump pump • Tecma® electric toilet system (freshwater) • Towel bar • Upper cabinets' with mirrored doors • Exhaust blowers • 120V AC GFI receptacles • Lighting, 24V DC

OPTIONS

OPTIONS In addition to the extensive list of standard features on the Bertram 64, the following factory options have been installed: • Pipewelders tuna tower with outriggers and 3 sided enclosure from P&R Canvas • High Seas Technologies electronics package • Bow thruster • Premium decor package • Teak helm and companion seats • Premium Audio & Video in master, starboard stateroom and VIP stateroom • Eskimo ice maker for the transom fishbox • Side mount controls and matching wheel • Coldplate on the flybridge cold box • Oil change reservoir tank • LED blue underwater lights • Cockpit misters **HIGH SEAS TECHNOLOGIES ELECTRONICS PACKAGE** • Furuno 12KW radar transceiver with 6' open array antenna • Furuno 15" color monitors (2) • Furuno NAVNET 3D BB processor with pre-loaded library for entire U.S. coastline including Alaska and Hawaii. Also pre-loaded tides and currents • Furuno GPSWAAS antenna • Furuno NAVNET Sirius satellite weather • Furuno BB network sounder with 15" color monitor • Garmin GPS • Simrad autopilot • 2 ICOM VHF radios • ACR Globalfix IPRO CAT 1 EPIRB • ACR searchlight • KVH Tracvision M7 US TV system (perfect for Latin America) • HST engineering drawings **ADDITIONAL OPTIONS** • VEEM spare props • Aquarium with LED lights • Bow cushions / lounge area • Flybridge cushion / lounge area

Exclusions

Owner's personal belongings.

Disclaimer

The Company offers the details of this vessel or yacht in good faith but cannot guarantee or warrant the accuracy of this information nor warrant the condition of the vessel. A buyer should instruct his representatives, agents, or his surveyors, to investigate such details as the buyer desires validated. This vessel or yacht is offered subject to prior sale, price change, or withdrawal without notice.

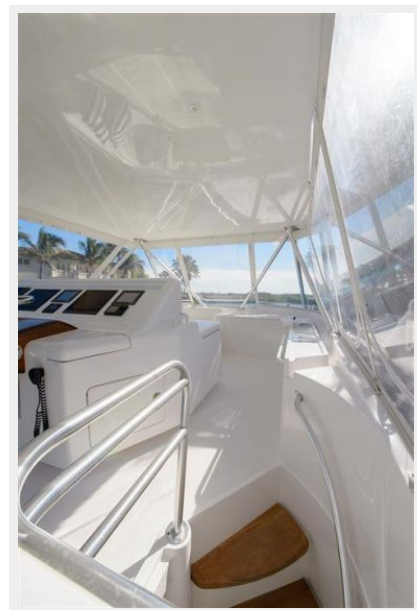
PHOTOS



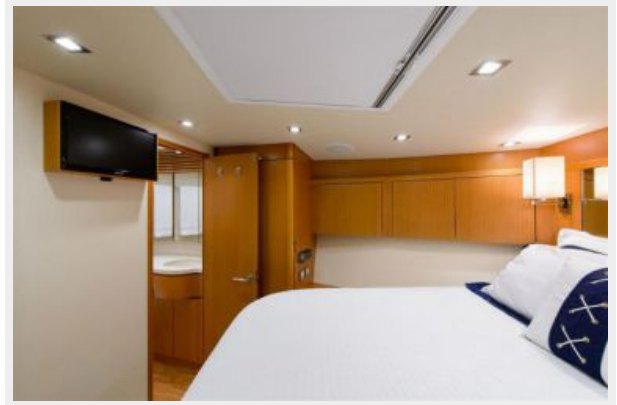
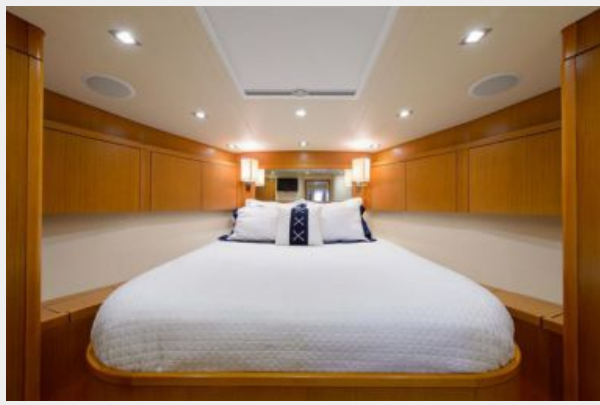




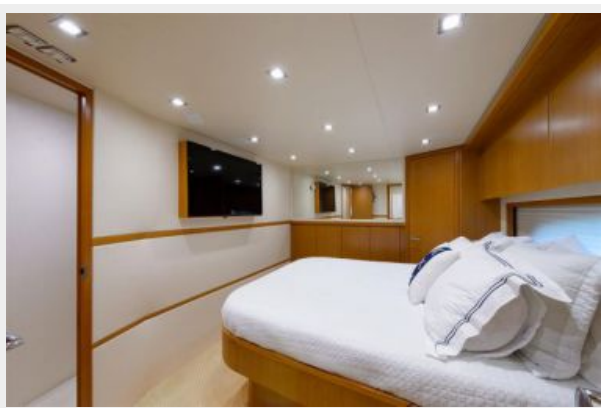




















CONTACTS

Andrey Shestakov, leading yacht broker of the sales department of Shestakov Yacht Sales Inc. Shestakov Yacht Sales Inc., the official representative of the Miami/Fort Lauderdale FL headquarters.

Contact details

Email: andrey@shestakovyachtsales.com

Web: shestakovyachtsales.com/en/

Telephones

USA: +1(954)274-4435

Office hours

Monday – Saturday: **9:00 - 21:00** EDT

Sunday: **closed**

Address



Harbour Towne Marina, 850 NE 3rd St,
STE 213, Dania, FL 33004