

REEL HAPPY — BERTRAM



Судостроитель: BERTRAM

Год постройки: 2013

Модель: Катер для спортивной рыбалки

Цена: **ЦЕНА ЯХТЫ ПО ЗАПРОСУ**

Местонахождение: United States

Длина общая: 64' 0" (19.51m)

Ширина: 18' 2" (5.54m)

Макс. осадка: 5' 5" (1.65m)

Крейс. скорость: 32 Kts. (37 MPH)

Макс. скорость: 40 Kts. (46 MPH)

Купить **Reel Happy — BERTRAM** а также выбрать подходящую вам яхту из нашего каталога яхт вам поможет опытный яхтенный брокер Андрей Шестаков. На сегодняшний день компания **Shestakov Yacht Sales Inc.** имеет большое количество яхт в собственном списке продаж, а также тесно сотрудничает со всеми крупными яхтенными производителями по всему миру.

Для того чтобы купить яхту **Reel Happy — BERTRAM** а также проконсультироваться по любому вопросу связанному с покупкой, продажей, чартером яхт позвоните по телефону **+7(918)465-66-44**.

ОГЛАВЛЕНИЕ

ОГЛАВЛЕНИЕ	2
ХАРАКТЕРИСТИКИ	3
Основная информация	3
Размеры	3
Скорость, вместимость и масса	3
Размещение	3
Корпус и палуба	3
Информация о двигателе	4
ПОДРОБНОЕ ОПИСАНИЕ	5
STANDARD FEATURES OF THE BERTRAM 64	5
OPTIONS	7
Исключения	8
Отказ от ответственности	8
ФОТОГРАФИИ	9
КОНТАКТЫ	22
Контактная информация	22
Телефоны	22
Время работы	22
Адрес	22

ХАРАКТЕРИСТИКИ

Основная информация

Тип судна: Катер для спортивной рыбалки

Подкатегория: Convertible

Модельный год: 2013

Год постройки: 2013

Страна: United States

Размеры

Длина общая: 64' 0" (19.51m)

Ширина: 18' 2" (5.54m)

Макс. осадка: 5' 5" (1.65m)

Скорость, вместимость и масса

Крейс. скорость: 32 Kts. (37 MPH)

Макс. скорость: 40 Kts. (46 MPH)

Водоизмещение: 94711 Pounds

Вместимость воды: 360 Gallons

Объем топливного бака: 1850 Gallons

Размещение

Всего кают: 4

Всего ком. состава: 3

Корпус и палуба

Материал корпуса: Fiberglass

Информация о двигателе

Двигатели: 2

Производитель: MTU

Модель: 16V2000 - 2200 HP

Тип двигателя: Inboard

Тип топлива: Diesel

ПОДРОБНОЕ ОПИСАНИЕ

STANDARD FEATURES OF THE BERTRAM 64

EXTERIOR FINISH • Maxguard (Premium ISO-NPG gelcoat) • BOMAR hatches powder coated to match gelcoat • Sprayed non-skid gelcoat deck surfaces • Blister resistant vinyl ester resin in hull bottom **HULL DECK AND FLYBRIDGE CONSTRUCTION** • Deck: hand laid-up molded fiberglass sandwich construction • Flybridge: hand laid-up molded fiberglass sandwich construction • Hull: hand laid-up molded fiberglass, solid bottom with cored hull-sides above the waterline, solid keel and chines **HULL** • Ball seacocks on all underwater thru-hull fittings, all with electrical bonding • Bertram dark blue waterline stripe • Dark blue anti-fouling bottom paint • Common drain system • Freshwater tank • Fuel tank: FRP, zero trim effect (midship mounted) with fuel level sight glass • Holding tank: with liquid level monitors and plumbed for dockside pump out • Linear exhaust muffler system • Recessed transom swim/emergency steps • Sump tank with automatic pump-out for shower and sink • Zincs, transom mounted **DECK** • Anchor locker • Bow pulpit with windlass • Anchor: Delta 55 lbs. with chain and line • Wash down faucet (foredeck) • Anodized aluminum bow rail with burgee staff • Cleats: 2 forward, 2 aft with transom hawse pipes, 4 spring line • Compressed heavy-duty white vinyl rubrail with solid stainless steel insert • Fuel fills, port and starboard • Fuel fill alarm • Freshwater tank fill • Hatches over engines for ease of engine access • Powder coated aluminum handrails on pilaster • Powder coated aluminum handrails over side windows **COCKPIT** • Mezzanine Deck • Access hatches to lazarette, gasketed, scuppered, and dogged • Cockpit coaming padding • Dockside electrical connection, (2) 50 AMP/220V (Two Glenndinning CableMaster, standard) • Dockside water connection with pressure reducing valve • Doors, port and starboard, to conceal shore power inlets, dockside water inlet, faucets and switches • Engine room access door, with ladder to engine room, lockable • Fire extinguisher manual controls • Wash down, Freshwater • Wash down, Saltwater • Lighting: Cockpit • Live well in mezzanine deck • Molded boarding steps (port & starboard) • Molded fiberglass spiral stairway with teak covered steps to flybridge • Molded rod compartment, with wash down (lighted) • Cockpit freezer • Reinforcement for fighting chair • Removable fish box with macerator pump • Rod holders (4) • Salon steps, teak covered and molded storage/tackle drawer • Self-bailing cockpit with large scuppers • Stereo speakers, watertight • Transom door and gate • Transom fish box insulated, with overboard drain • Under gunwale storage for boat hook and gaff **FLYBRIDGE** • Stereo with watertight speakers • Basic electronics • Stainless steel steering wheel • Systems monitors with audible alarms included in engine package • Instrument panel and planned electronic areas accessible from under console • Instrument panel with: tachometer, oil engine pressure, engine water temperature, gear, oil pressure, voltmeter, fuel level, switches and Fireboy discharge indicator • Console handrails, port, starboard and forward • Distribution panel in locker • Electronic controls • Engines synchronizer • Insulated cooler, sink with cold water faucet • International navigation lights • Molded footrest for helm seat • Seating: Teak helm and companion pedestal seats • Seating: U-shaped lounge forward of helm • Stereo and VHF locker • Storage: molded under seating, console, and cabinets • Air Horn: Kahlenberg® • Freezer/ Fridge **ENGINE COMPARTMENT AND FUEL SYSTEMS** • Twin diesel turbo-charged, fresh water cooled main engines with

marine gear, engine driven alternators, water separators/ fuel filters, & exhaust mufflers • Trolling valves • Aquamet shafts • Bronze rudders and struts • Dripless shaft seals • Dual fuel filters-main engines (4 total) • Air intake, hull sides • Emergency engine shut-down system • Acoustical and thermal insulation in the engine room • Vibration dampening isolators for engines • Automatic/Manual blower system for engine room • Bilge pumps; (4) auto/manual • Electric Hot Water Heater: 11 gal (2) • Emergency bilge water evacuation system, engine driven • Engine and machinery room lighting AC & DC • Engine room access ladder • Fixed fire extinguishing system for engine and machinery rooms with automatic and remote manual controls plus audible and visual discharge signals • Generator: 23 kW freshwater-cooled; remote start diesel generators with sound shields. (Generator may not supply power for all standard, optional and owner-added equipment. Power management maybe required.) • Fuel filters on generator supply • Hi gloss polyurethane finish • Hydraulic steering with power assist pump • Metered oil change system for engines, gear & generator with quick disconnect • Seacocks, heavy duty manganese bronze • Seawater strainers for generator, air conditioning and saltwater wash down pump

ELECTRICAL SYSTEMS - SALON • 240V/120V AC input and main distribution panel with voltmeter, ammeter, generator controls, magnetic circuit breakers and shore power selector switches • 24V/12V DC main distribution panel with voltmeter, ammeter, magnetic circuit breakers and batteries tester • Alarm Monitor: bilge flood signal for three compartments, black water tank indicator light, high-heat signal in engine and machinery rooms • Electrical pump-out for toilet holding tank • Fresh water level gauge • Light fixtures, 24V DC • Radio and cable television system with antenna and shore connection

ELECTRICAL SYSTEMS - GALLEY • 240V/120V AC appliances distribution panel with magnetic circuit breakers • 24V DC galley and cabins distribution panel • GFI receptacles

ELECTRICAL SYSTEMS - BRIDGE • 24V DC flybridge electronics accessory panel with magnetic circuit breakers in console • 12V DC flybridge electronics accessory panel with magnetic circuit breakers in console • Alarm Monitor: bilge flood signal for three compartments, black water tank indicator light, high-heat signal in engine and machinery rooms • Battery parallel switch, remote • Ground fault circuit interrupter receptacles in console • Main engine control panel • Omni directional TV antenna

ELECTRICAL SYSTEMS - ENGINE ROOM AND SYSTEMS ROOM • 24V DC batteries panel with switches for main engines and main battery disconnect switches • 24V DC fuses for uninterrupted power to bilge pumps, fire and bilge flood monitors • Air conditioning zoned direct expansion total 59,000 BTU • Batteries (6D), heavy duty, 1 bank 4 battery. Ea: house & 1 bank 2 battery. Ea: engines; 1 bank 12V generator • Battery chargers with thermal cutoff and switching system for complete integration and battery parallel system for main engines and generator • Bonding system, galvanic and electrical • Converters (1) 50 amp 24V; (1) 100 amp 24V, (1), 20 amp 12V • ELCI receptacles • Isoboost transformers (2) • Light fixtures, 120V AC/ 24V DC

SALON • Aluminum salon door with frameless glass • Fixed frameless windows with tinted safety glass, port and starboard • Removable frameless windows with tinted safety glass, aft • Entertainment center with 40" LED TV, AM/FM stereo receiver, CD/DVD player • Sofa • Cherry wood paneling with padded vinyl accents • Vinyl headliner (Whisper Wall System) • Wood blinds • Icemaker • Cocktail table • Carpeting with acoustic padding • 120V AC receptacles • Air conditioning electronic control • Central vacuum system • Electrical distribution panels • Lighting, 24V DC • Octoplex/Maretron monitoring of lights, bilges, and tanks

GALLEY/DINETTE • CORIAN® countertops and sinks • Sub-Zero drawer under counter refrigeration (4 Drawers) • Cooktop, four burners • Dishwasher (Fisher & Paykel®) •

Convection microwave oven • Single lever hot and cold faucet • Flooring, Amtico teak and holly • Designated storage for dishes & glasses • Dinette, U-shaped with storage and Cherry table • Storage over dinette, forward • Lighting, 24V DC • Vinyl headliner (Whisper Wall System)

COMPANIONWAY • Carpeting • Charts flat storage port and starboard • Flush panel doors to staterooms, starboard head and laundry locker • Lighting 24V DC • Awlgrip finished bilge storage compartment • Vinyl headliner and wall covering (Whisper Wall System) • Washer and dryer in locker with shelf

MASTER STATEROOM • Queen-sized berth with drawer storage beneath • Mattress, innerspring with spread, pillows, and shams • Sheets/pillowcases, one set • Headboard with mirrors • Port and starboard nightstands with drawer • Combination wood paneling/padded vinyl wall covering (Whisper Wall System) • Entertainment center with 32" LED TV-AM/FM/CD/DVD/MP3 player • Hanging locker, Oversized, lighted cedar lined hanging locker (full and half length) • Carpeting • 120V AC receptacles • Air conditioning electronic control • Lighting, 24V DC • Reading lights • Vinyl headliner (Whisper Wall System)

STARBOARD GUEST STATEROOM • Berths, twin, side by side with storage beneath • Mattress, innerspring with spread, pillows, and shams • Sheets/pillowcases, one set for each berth • Nightstand with drawer • Upper hullside cabinet storage • Four drawer dresser with shelf • Entertainment center with 19" LED TV-AM/FM/CD/DVD/MP3 player • Reading lights • Hanging locker, cedar lined with automatic light • 120V AC receptacles • Air conditioning electronic control • Carpeting • Lighting, 24V DC • Vinyl headliner and wall covering, padded (Whisper Wall System)

FORWARD GUEST STATEROOM • Queen-sized berth with drawer storage beneath • Mattress, innerspring with spread, pillows, and shams • Sheets/pillowcases, one set • Entertainment center with 19" LED TV-AM/FM/CD/DVD/MP3 player • Hanging locker, cedar lined with automatic light (STBD only) • Hullside storage shelves • Upper cabinet storage, port & starboard • Reading lights • Opening hatch overhead with shade & screen • Air conditioning electronic control • Carpeting • Lighting, 24V DC • 120V AC GFI receptacles • Vinyl headliner and wall covering, padded (Whisper Wall System)

STARBOARD/CREW STATEROOM (OPTIONAL) • Berths, upper & lower, with storage beneath lower berth • Mattress, innerspring with spread, pillows, and shams • Sheets/pillowcases, one set for each berth • Hanging locker, cedar lined with automatic light • Air conditioning electronic control • Carpeting • Lighting, 24V DC • 120V AC receptacles • Vinyl headliner and wall covering, padded (Whisper Wall System)

MASTER HEAD • CORIAN® countertop and sink • Flooring, Amtico teak and holly • Mirrored overhead • Stall shower with door and automatic sump pump • Tecma® electric toilet system (freshwater) • Towel bar • Upper cabinets' with mirrored doors • Exhaust blowers • 120V AC GFI receptacles • Lighting, 24V DC

STARBOARD GUEST HEAD • CORIAN® countertop and sink • Mirrored overhead • Stall shower with door and automatic sump pump • Tecma® electric toilet system (freshwater) • Towel bar • Upper cabinets' with mirrored doors • Exhaust blowers • 120V AC GFI receptacles • Lighting, 24V DC

PORT GUEST HEAD • CORIAN® countertop and sink • Flooring, Amtico teak and holly • Mirrored overhead • Stall shower with door and automatic sump pump • Tecma® electric toilet system (freshwater) • Towel bar • Upper cabinets' with mirrored doors • Exhaust blowers • 120V AC GFI receptacles • Lighting, 24V DC

OPTIONS

OPTIONS In addition to the extensive list of standard features on the Bertram 64, the following factory options have been installed: • Pipewelders tuna tower with outriggers and 3 sided enclosure from P&R Canvas • High Seas Technologies electronics package • Bow thruster • Premium decor package • Teak helm and companion seats • Premium Audio & Video in master, starboard stateroom and VIP stateroom • Eskimo ice maker for the transom fishbox • Side mount controls and matching wheel • Coldplate on the flybridge cold box • Oil change reservoir tank • LED blue underwater lights • Cockpit misters **HIGH SEAS TECHNOLOGIES ELECTRONICS PACKAGE** • Furuno 12KW radar transceiver with 6' open array antenna • Furuno 15" color monitors (2) • Furuno NAVNET 3D BB processor with pre-loaded library for entire U.S. coastline including Alaska and Hawaii. Also pre-loaded tides and currents • Furuno GPSWAAS antenna • Furuno NAVNET Sirius satellite weather • Furuno BB network sounder with 15" color monitor • Garmin GPS • Simrad autopilot • 2 ICOM VHF radios • ACR Globalfix IPRO CAT 1 EPIRB • ACR searchlight • KVH Tracvision M7 US TV system (perfect for Latin America) • HST engineering drawings **ADDITIONAL OPTIONS** • VEEM spare props • Aquarium with LED lights • Bow cushions / lounge area • Flybridge cushion / lounge area

Исключения

При продаже яхты исключаются личные вещи владельца.

Отказ от ответственности

Компания предоставляет описание судна или яхты добросовестно, но не может гарантировать точность этой информации, а также не ручается за техническое состояние. Покупатель должен проинструктировать своих агентов или оценщиков исследовать представленную информацию более подробно, по собственному желанию. Продажа судна или яхты, изменение цены или снятие с продажи будет происходить без предварительного уведомления.

ФОТОГРАФИИ



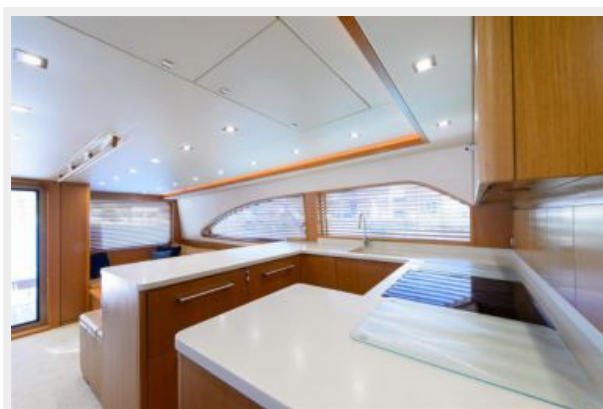
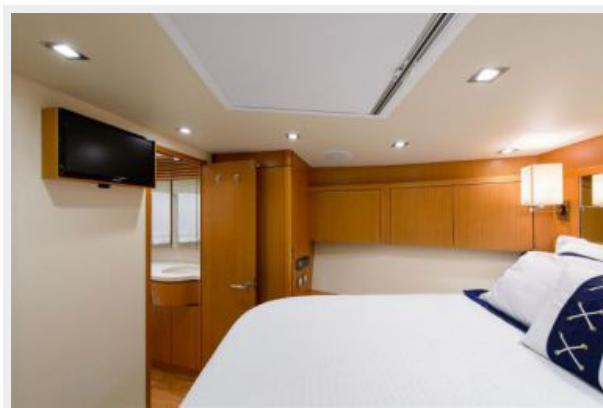
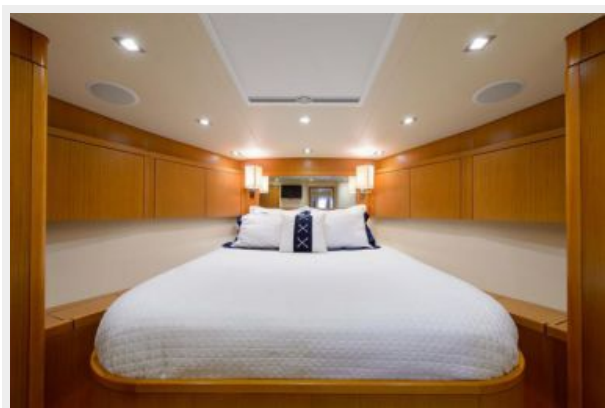
























КОНТАКТЫ

Андрей Шестаков (Andrey Shestakov) – ведущий яхтенный брокер отдела продаж яхт и судов компании Shestakov Yacht Sales Inc. Официальный представитель Shestakov Yacht Sales Inc. для русскоговорящих клиентов в центральном офисе компании в Майами/Форт Лодердейл/Флорида/США.

Контактная информация

Email: andrey@shestakovyachtsales.com

Web: shestakovyachtsales.com

Телефоны

Краснодарский край: **+7(918)465-66-44**

США, Майами, Флорида: **+1(954)274-4435**

Время работы

Понедельник – Суббота: **9:00 - 21:00**
EDT

Воскресенье: **Закрето**

Адрес



Harbour Towne Marina, 850 NE 3rd St,
STE 213, Dania, FL 33004