

## SECOND WIND — GRAND BANKS



**Builder:** GRAND BANKS

**Year Built:** 2002

**Model:** Cruiser

**Price:** PRICE ON APPLICATION

**Location:** United States

**LOA:** 38' 0" (11.58m)

**Beam:** 13' 2" (4.01m)

**Min Draft:** 3' 4" (1.02m)

**Cruise Speed:** 22 Kts. (25 MPH)

**Max Speed:** 28 Kts. (32 MPH)

Our experienced yacht broker, Andrey Shestakov, will help you choose and buy a yacht that best suits your needs **SECOND WIND — GRAND BANKS** from our catalogue. Presently, at Shestakov Yacht Sales Inc., we have a wide variety of yachts available on our sale's list. We also work in close contact with all the big yacht manufacturers from all over the world.

If you would like to buy a yacht **SECOND WIND — GRAND BANKS** or would like help answering any questions concerning purchasing, selling or chartering a yacht, please call **+1(954)274-4435**

# TABLE OF CONTENTS

TABLE OF CONTENTS	2
SPECIFICATIONS	4
Basic Information	4
Dimensions	4
Speed, Capacities and Weight	4
Accommodations	4
Hull and Deck Information	4
Engine Information	5
DETAILED INFORMATION	6
Overview	6
Accommodations	6
Engines	7
Electrical	7
Electronics	8
Exclusions	8
Disclaimer	9
PHOTOS	10
Profile	10
Aft Deck	10
foredeck	10
windless	10
foredeck	10
Starboard side deck	11
Mast and equipment	11
Cockpit air conditioning	11
Helm electronics	11
Navnet	11
Galley ice maker	11

---

Undercounter refrigerator	12
Adler Barber chest refrigerator.	12
Princess gas stove and microwave	12
Salon	12
Salon aft	12
Master berth	12
Helm	13
Port engine	13
filters port	13
filters starboard	13
Westerbeke 7.5 Kw	13
CONTACTS	14
Contact details	14
Telephones	14
Office hours	14
Address	14

---

# SPECIFICATIONS

---

## Basic Information

---

**Category:** Cruiser

**Sub Category:** Downeast

**Model Year:** 2002

**Year Built:** 2002

**Country:** United States

## Dimensions

---

**LOA:** 38' 0" (11.58m)

**LWL:** 34' 5" (10.49m)

**Beam:** 13' 2" (4.01m)

**Min Draft:** 3' 4" (1.02m)

**Clearance:** 9' 3" (2.82m)

## Speed, Capacities and Weight

---

**Cruise Speed:** 22 Kts. (25 MPH)

**Max Speed:** 28 Kts. (32 MPH)

**Displacement:** 28500 Pounds

**Water Capacity:** 95 Gallons

**Fuel Capacity:** 344 Gallons

## Accommodations

---

**Total Cabins:** 1

**Total Berths:** 1

**Total Heads:** 1

## Hull and Deck Information

---

**Hull Material:** Fiberglass

## Engine Information

---

**Engines:** 2

**Manufacturer:** Caterpillar

**Model:** 3208

**Engine Type:** Inboard

**Fuel Type:** Diesel

---

# DETAILED INFORMATION

---

## Overview

---

SECOND WIND is a fine example of the world renowned Eastbay 38 line. Superior design, Performance and construction are synonymous with this Downeast express cruiser. She has been well maintained by her knowledgeable owner. Priced for immediate sale she is a must see for anyone looking for a quality downeast cruiser.

## Accommodations

---

### STATEROOM:

The stateroom is located forward featuring a large V-berth with filler cushion. There are storage cabinets on either side above the V-berth as well as a chest of drawers on the starboard side. This is a particularly well ventilated stateroom with a large hatch in the ceiling, opening stainless steel ports on either side and overhead lights.

### HEAD

Head is on the port side forward of the galley. This is a combination head/shower with curtain. There is storage both above and below the large countertops. Vacu-Flush head system.

### SALON:

Opposite the Galley on the starboard side is the Salon featuring a settee covered in blue ultra-suede. A Hi-Lo table is featured. Forward of the settee is a flat screen TV. There are a number of storage areas in the Salon as well as a CD/stereo system and speakers throughout. All ports are stainless steel that open as well as two hatches above.

### GALLEY:

The well designed galley is located to port and features a deep stainless steel sink, princess three burner propane stove, with a 110 V Microwave/Convection oven and ample storage on all sides. Aft lies the 12V Cool-matic refrigeration with a teak door for frontal access. There is a separate top loading stainless steel freezer box in the corner.

Pressure fresh water system

Water heater

2 Propane tanks

### HELM AREA:

The helm area is under a factory hardtop and is fully air conditioned. There are dual hatches in

the overhead as well as sliding glass windows port and starboard. The center forward window also opens to allow fresh air flow when desired. The helm area has an L-shaped settee with a varnished custom teak/maple Hi-Lo table to port and a single captains chair to starboard. The entire area is closed off with Isinglass enclosures.

#### COCKPIT:

The cockpit is very large with a teak sole and three lazarette hatches. There is a transom door leading onto the teak swim platform with a swim ladder. There is a hot and cold freshwater shower located on the transom.

## Engines

---

#### MECHANICAL:

Twin 375 HP Cat 3208 TA Main Engines

2" Shafts turning 24X32 4 bladed props and driplless shaft seals.

Westerbeke 7.6 Kw Genset with Aqualift muffler.

12V oil change system

Sealand Vacuflush Head system

Hynautic single station hydraulic steering

Bennet Trim Tabs

Two 16,000 BTU reverse cycle Marine Air units

Racor fuel Filtration.

Driplless Shaft Seals

3 Electric bilge pumps.

## Electrical

---

Wired for both 12 volt DC and 120 Volt AC service. Westerbeke 7.6 Kw diesel generator provides ample power away from the dock.

#### 12 VOLT:

Electrical panel with breakers

Volt meter

(2) 90 amp alternators

(2) 4D house batteries

(1) 8D engine start battery

(1) grp 24 generator start battery.

### **120 VOLT:**

Switch panel with breakers

Volt and Amp meters

50 amp shore power inlet with 50 foot shore power cord.

Promatic 50 amp charger

Remote controlled spotlight.

## **Electronics**

---

FURUNO 1833C/NT RADAR/GPS PLOTTER WITH 10.4" COLOR LCD SCREEN.

Furuno-BBG-GPS Antenna

Furuno Smart Sensor Depth/Speed/Water Temp/Log

C-map Charts

Simrad AP 22 Autopilot

Standard VHF/Hailer

Remote spotlight.

KVH M3 Trackvision

## **Exclusions**

---

Owner's personal belongings.



---

## Disclaimer

---

The Company offers the details of this vessel or yacht in good faith but cannot guarantee or warrant the accuracy of this information nor warrant the condition of the vessel. A buyer should instruct his representatives, agents, or his surveyors, to investigate such details as the buyer desires validated. This vessel or yacht is offered subject to prior sale, price change, or withdrawal without notice.

# PHOTOS

**Profile**



**Aft Deck**



**foredeck**



**windless**



**foredeck**



**Starboard side deck**



**Mast and equipment**



**Cockpit air conditioning**



**Helm electronics**



**Navnet**



**Galley ice maker**





**Undercounter refrigerator**



**Adler Barber chest refrigerator.**



**Princess gas stove and microwave**



**Salon**



**Salon aft**



**Master berth**



**Helm**



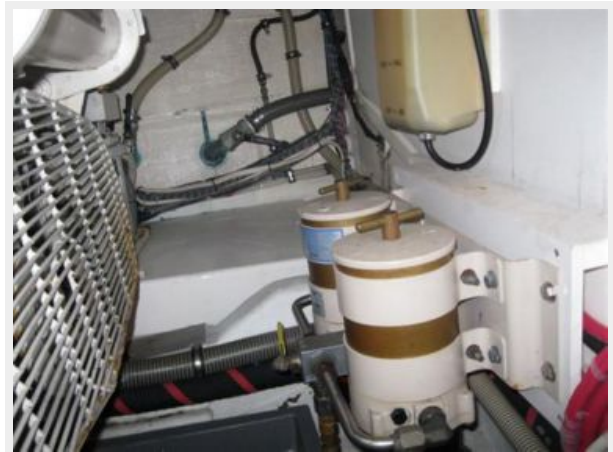
**Port engine**



**filters port**



**filters starboard**



**Westerbeke 7.5 Kw**



---

# CONTACTS

---

Andrey Shestakov, leading yacht broker of the sales department of Shestakov Yacht Sales Inc. Shestakov Yacht Sales Inc., the official representative of the Miami/Fort Lauderdale FL headquarters.

---

## Contact details

---

Email: [andrey@shestakovyachtsales.com](mailto:andrey@shestakovyachtsales.com)

Web: [shestakovyachtsales.com/en/](http://shestakovyachtsales.com/en/)

---

## Telephones

---

USA: +1(954)274-4435

---

## Office hours

---

Monday – Saturday: **9:00 - 21:00** EDT

Sunday: **closed**

---

## Address

---



Harbour Towne Marina, 850 NE 3rd St,  
STE 213, Dania, FL 33004