

39FT 2004 SEA RAY 390 SUNDANCER — SEA RAY



Судостроитель: SEA RAY

Год постройки: 2004

Модель: Крейсер

Цена: ЦЕНА ЯХТЫ ПО ЗАПРОСУ

Местонахождение: United States

Длина общая: 39' 0" (11.89m)

Ширина: 13' 2" (4.01m)

Макс. осадка: 2' 10" (0.86m)

Крейс. скорость: 25 Kts. (29 MPH)

Купить 39ft 2004 Sea Ray 390 Sundancer — SEA RAY а также выбрать подходящую вам яхту из нашего каталога яхт вам поможет опытный яхтенный брокер Андрей Шестаков. На сегодняшний день компания Shestakov Yacht Sales Inc. имеет большое количество яхт в собственном списке продаж, а также тесно сотрудничает со всеми крупными яхтенными производителями по всему миру. Для того чтобы купить яхту 39ft 2004 Sea Ray 390 Sundancer — SEA RAY а также проконсультироваться по любому вопросу связанному с покупкой, продажей, чартером яхт позвоните по телефону **+7(918)465-66-44**.

ОГЛАВЛЕНИЕ

ОГЛАВЛЕНИЕ	2
ХАРАКТЕРИСТИКИ	3
Основная информация	3
Размеры	3
Скорость, вместимость и масса	3
Размещение	3
Корпус и палуба	3
Информация о двигателе	4
ПОДРОБНОЕ ОПИСАНИЕ	5
Manufacturer Provided Description	5
Standard & Optional Features	5
Исключения	16
Отказ от ответственности	16
ФОТОГРАФИИ	17
КОНТАКТЫ	20
Контактная информация	20
Телефоны	20
Время работы	20
Адрес	20

ХАРАКТЕРИСТИКИ

Основная информация

Тип судна: Крейсер

Подкатегория: Express

Модельный год: 2004

Год постройки: 2004

Страна: United States

Размеры

Длина общая: 39' 0" (11.89m)

Ширина: 13' 2" (4.01m)

Макс. осадка: 2' 10" (0.86m)

Скорость, вместимость и масса

Крейс. скорость: 25 Kts. (29 MPH)

Водоизмещение: 19300 Pounds

Вместимость воды: 70 Gallons

Вместимость сточного бака: 42 Gallons

Объем топливного бака: 275 Gallons

Размещение

Всего кают: 1

Всего коек: 3

Всего ком. состава: 1

Корпус и палуба

Материал корпуса: Fiberglass

Информация о двигателе

Двигатели: 2

Производитель: Mercruiser

Модель: 8.1 S Horizon

Тип двигателя: Inboard

Тип топлива: Gas/Petrol

ПОДРОБНОЕ ОПИСАНИЕ

Manufacturer Provided Description

Designed to get noticed, this completely new 390 Sundancer features elegance at every turn. A sleek, low-profile helm plus glove-soft cockpit seating makes this newest member of the Sundancer family an ideal place to spend a weekend of fun. Below, the gorgeously appointed salon includes a fully equipped entertainment center, beautiful wood crafted galley and separate conversation area that converts to a bed for overnight guests.

Standard & Optional Features

Features and Standard Equipment

HULL & DECK FEATURES

Bottom Paint

Bow Rail, 316 Stainless Steel w/Welded Stanchions,

Intermediate Rails & Life Lines

Canvas Colors (Navy, Green, Tan, Black)

Cleats, Custom Sea Ray

® Thru-Bolted -

Stainless Steel (8)

Deck Fill Plates, Stainless Steel

Deck Rails, 316 Stainless Steel

Drain Plugs, Brass-Threaded - Garboard

Gel-Coat, Arctic White

Graphics, Striping

Handrails, 316 Stainless Steel

Hatch, Deck Vent - Translucent w/Locks &

Sky Screen Cover (20x20)

Lights, Navigation

Portlights, Stainless Steel (4 Fixed, 2 Opening)

Resin, High-Performance Vinylester

Rub Rail, PVC w/Stainless Steel Insert

Skylights, Flush-Mount w/Retractable Sunshade -

Salon

Storage, Transom Wall

Stringer System, Fiberglass

Swim Platform, Integral w/Concealed Stainless Steel

Three-Step Swim Ladder w/Integral Grab Handle

Thru-Hull Fittings, Stainless Steel

Toe Rail, Molded Fiberglass - Deck

Vent System, Engine Room - Integral

Windshield, Tempered/Tinted Curved Glass

w/Stainless Steel Frame, Electric Front Vent &

Stainless Steel Supports

Windshield Washer System

Windshield Wipers - Speed & Delay

Canvas (Sunbrella)

Aft Curtain

Aft Sunshade

Bimini Top

Front Curtains

Side Curtains

Dash Cover

Windlass System:

Anchor, Galvanized

Anchor Chute, Stainless Steel

Anchor Rope/Chain Storage w/Hatch

Anchor Washdown Spigot

Windlass, Rope/Chain w/Foot Switches

(Lofrans Progress I)

Certifications:

Meets Applicable USCG & ABYC Standards

NMMA Certification

COCKPIT FEATURES

Cockpit Refrigerator

Beverage Holders (6)

Carpet Liner, Snap-In

Door, Cabin Entry - Acrylic

Door, Transom

Floor Liner, Fiberglass - Self-Bailing

Hatch, Engine Room - Electrically Actuated

Ice Bucket, Insulated - Built-In

Lighting, Indirect

Outlet, 12V Accessory

Outlet, 120V GFI Protected

Seating, Companion Bench w/Molded Fiberglass

Storage Base & Euro-Style Backrest

Seating, Helm - Custom Euro-Style w/Flip-Up

Thigh-Rise Bolster, Armrests & Heavy-Duty

Pedestal w/Slide, Swivel & Pneumatic Vertical

Adjustment

Seating, U-Shaped - Aft

Ship's Bell

Sport Spoiler, Molded Fiberglass (Seamless)

w/Overhead Lighting

Step, Molded Deck Access

Storage, Side Panels

Table, Cockpit w/Dedicated Storage

Wet Bar solid surface countertop w/Sink,

Faucet, Stainless Steel Handrail, Trash

Receptacle, Cooler & Storage - Port

CABIN FEATURES

Carbon Monoxide Monitor

Carpet, Deep-Pile BCF - 44-Ounce

Carpet Runners, Interior (Sunbrella)

Handrails, Stainless Steel

Interior Finish - Blossom Cherry

(also available in Natural Maple)

Lighting, 12V Halogen

Lighting, 12V Indirect

Outlet, Phone

Outlets, 120V GFI Protected

Outlets & Switch Plates - Satin Nickel Finish

Pillows, Accent

Shades, Wood

Stereo, 12V AM/FM Single CD, Satellite-Ready

w/6-Disc CD Changer, Amplifier, Subwoofer,

Speakers (8), Digital Cockpit Remote Control &

Speaker Selector Switches (Clarion)

Storage, In-Floor

Wood Trim, Handcrafted

Salon:

Mirrors, Wall Accent

Seating, L-Shaped Sofa w/Storage Below - Converts

to Bed w/Filler Cushions (Ultraleather HP

TM)

Storage, Gunwale Cabinets

Table, Dinette w/High-Gloss Wood Surface &

Dedicated Storage

TV, 22" Flat Screen LCD (120V) w/Remote DVD

Player, Coax Outlet & Gain Control Panel

Galley:

Coffeemaker, 120V (Spacemaker)

Countertop, Molded Fiberglass w/Granite-Colored

Gel-Coat, Sink, Single-Lever Grohe

® Faucet &

Corian

® Sink Cover

Freezer, Under-Counter - Dual-Voltage - 120V/12V

Microwave Oven, 120V

Outlet, 12V Accessory

Power Vent, 12V

Refrigerator, Under-Counter - Dual-Voltage -

120V/12V

Storage, Drawers w/Cutlery Insert

Storage, Upper & Lower w/Designated Plate &

Glass Storage

Stove, 120V Two-Burner

Trash Receptacle w/Chute & Solid Surface Cover

Forward Stateroom:

Bed, Full-Size w/Innerspring Mattress, Pillows, Sheets

& Coordinated Spread, Drawer Storage Below

Door, Privacy - Sliding Pocket

Hanging Locker w/Light - Starboard

Hanging Locker w/Mirror - Port

Mirrored Rope Locker Bulkhead

Storage, Gunwale Cabinets - Port & Starboard

Flat TV 15" - 120V w/Remo

Forward Head - Port:

Door, Privacy - Dual Access from Forward Stateroom

& Salon

Handrails, Stainless Steel

Head, (VacuFlush

®)

Power Vent, 12V

Storage, Medicine Cabinet - Mirrored

Vanity w/Sink, Grohe

® Faucet & Storage Below

Forward Shower - Starboard:

Bath Accessories, Chrome

Clothes Hook

Curtain, Shower

Door, Privacy - Access from Forward Stateroom

Handrails, Stainless Steel

Shower w/Seat & Adjustable Grohe

® Shower Wand

Mid-Stateroom:

Curtain, Privacy w/Dedicated Storage

Hanging Locker w/Light - Port

Mirrored Bulkhead - Aft

Seating, Conversation Pit w/Slide-Out Base

Storage, Cabinet - Starboard

TECHNICAL

Control Station:

Alarms, High-Water - Bilge & Cabin

Compass

Emergency Start System - Engines

Gel-Coated Dash - Nickel w/Espresso Accents

Horns, Air (Concealed) - Dual Trumpet

Instrument Panel

Shift & Throttle Controls w/Gold Knobs

SmartCraft

TM Diagnostics:

- Instrumentation, Custom Sea Ray

4-in-1 Multigauges (2) w/Low-Glare Blue

Night Lighting & Chrome Bezels (Includes:

Fuel Level, Oil Pressure, Voltmeter,

Water Temperature)

- SmartCraft System View (Includes: Air &

Water Temperature, Combined Fuel Flow/

Range, Depth, Engine Alarms/Hourmeters,

Engine Synchronization Display, GPS Interface,

System Maintenance Records)

Steering, Hydraulic

Steering, Tilt Wheel

Steering Wheel, Wood-Accent

Switch Panel (Backlit)

Switches, Illuminated Weatherproof Rockers &

Dimmer Control

Systems Monitor, Digital LCD - for Engine Diagnostics

& Pump Monitoring

Electronics:

Electronics Circuit, 50 Amp/12V

GPS (Raymarine RL80CRC Chartplotter/Radar

w/WAAS Differential Sensor

VHF Radio (Raymarine 230) w/Remote Speaker &

8' Fiberglass Antenna

Electrical Systems:

Batteries (4) w/Trays

Battery Charger/Converter, 120V/40 Amp/12V

Isolator, Galvanic (2)

Panel, Circuit Breaker - Remote (Helm)

Panel, DC Main Breaker (Bilge)

Panel, Main Distribution - AC

Panel, Main Distribution - DC

Shore Power, Dual 30 Amp/120V/60 Cycle

w/50' Cords & Adapters

TV/Phone Inlet w/TV Antenna, TV Shore Cord &

Phone Shore Cord

Wiring, Color-Coded w/Chafe Protection

Generator:

Remote Start w/Muffler, Freshwater Cooling,

Fuel Filter, Seacock & Seawater Strainer

w/Sound Box

120V/60 Cycle

7.3 kW Kohler Generator

Air Conditioning/Heating:

Zone-Controlled Reverse-Cycle System

(19,000 BTU)

Custom Integral Vent System

Engine Room:

Bilge Pumps, 12V Automatic (2)

Bilge Pumps, 12V Automatic High-Water

(1 Bilge, 1 Cabin)

Blowers, 12V Bilge (2)

Exhaust, Underwater - Patented

Fire Extinguisher

Fire Suppression System - Automatic

w/Manual Pull

Freshwater Cooling

Gel-Coated Engine Room, Oyster

Insulation, Engine Room - 2" w/Vinyl Barrier

Lighting, 12V

Steps, Engine Room Access - Diamond Plate

(Gas Only)

Fuel System:

Fuel Filters, Remote - Diesel Only (Racor)

Fuel Lines, USCG - Type A-1

Fuel Tanks, Aluminum w/Anti-Siphon Valves &

Electric Sending Units (2)

Water System:

Freshwater Washdown Spigot - Anchor

Freshwater Spigot - Engine Room

Freshwater Washdown Spigot - Transom

Pressure Water System w/12V Pump

Shower, Cockpit - Hot & Cold

Water Heater, 120V (6-Gallon)

Water Inlet, Dockside

Water Manifold System

Waste Systems:

Head System (VacuFlush)

Holding Tank Level Indicators - MDP & Head

Holding Tank w/Dockside Pump-Out &

Automatic Cut-Off (42-Gallon)

Macerator w/Seacock Interlock System

Sump Box w/Pump - Automatic

Underwater Gear:

Bonding System w/Zinc Hull Plate

Propeller Shafts, 1 1/2" Stainless Steel (2) -

Aquamet 19

Propellers, Nibral 4-Blade Cup

Rudders, Manganese-Bronze w/Stainless Steel Posts

Seacocks on all Underwater Fittings

Seawater Strainers

Shaft Logs, Dripless w/Extra Seal Carrier Kit

Struts, Manganese-Bronze

Trim Tabs, Hydraulic

ELECTRONICS OPTIONS

Autopilot (Raypilot ST-6001+)

Radar, Chartplotter - 4 kW/48 mile (Northstar 958)

Sea Ray

® Navigator i3 64gb 12" PC Chartplotter

w/Sunlight Viewable Touch Screen LCD

Engine Synchronizer-Gas engines

Yacht Flag and Pole

Исключения

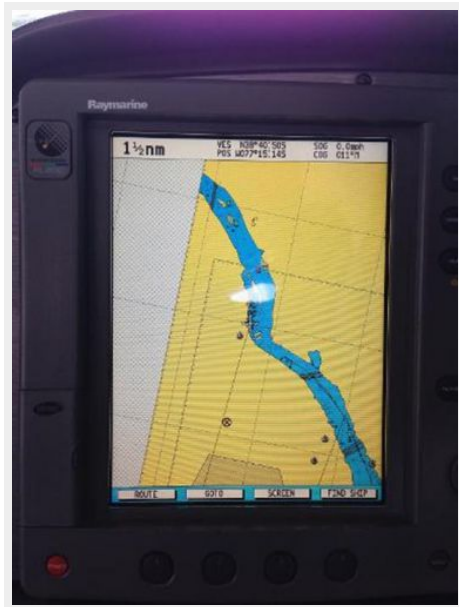
При продаже яхты исключаются личные вещи владельца.

Отказ от ответственности

Компания предоставляет описание судна или яхты добросовестно, но не может гарантировать точность этой информации, а также не ручается за техническое состояние. Покупатель должен проинструктировать своих агентов или оценщиков исследовать представленную информацию более подробно, по собственному желанию. Продажа судна или яхты, изменение цены или снятие с продажи будет происходить без предварительного уведомления.

ФОТОГРАФИИ







КОНТАКТЫ

Андрей Шестаков (Andrey Shestakov) – ведущий яхтенный брокер отдела продаж яхт и судов компании Shestakov Yacht Sales Inc. Официальный представитель Shestakov Yacht Sales Inc. для русскоговорящих клиентов в центральном офисе компании в Майами/Форт Лодердейл/Флорида/США.

Контактная информация

Email: andrey@shestakovyachtsales.com

Web: shestakovyachtsales.com

Телефоны

Краснодарский край: **+7(918)465-66-44**

США, Майами, Флорида: **+1(954)274-4435**

Время работы

Понедельник – Суббота: **9:00 - 21:00**
EDT

Воскресенье: **Закрито**

Адрес



Harbour Towne Marina, 850 NE 3rd St,
STE 213, Dania, FL 33004