

KARMA 5 — SEA RAY



Судостроитель: SEA RAY

Год постройки: 2011

Модель: Моторная яхта

Цена: **ЦЕНА ЯХТЫ ПО ЗАПРОСУ**

Местонахождение: United States

Длина общая: 50' 0" (15.24m)

Ширина: 14' 8" (4.47m)

Макс. осадка: 4' 1" (1.24m)

Крейс. скорость: 28 Kts. (32 MPH)

Макс. скорость: 30 Kts. (35 MPH)

Купить **KARMA 5 — SEA RAY** а также выбрать подходящую вам яхту из нашего каталога яхт вам поможет опытный яхтенный брокер Андрей Шестаков. На сегодняшний день компания **Shestakov Yacht Sales Inc.** имеет большое количество яхт в собственном списке продаж, а также тесно сотрудничает со всеми крупными яхтенными производителями по всему миру.

Для того чтобы купить яхту **KARMA 5 — SEA RAY** а также проконсультироваться по любому вопросу связанному с покупкой, продажей, чартером яхт позвоните по телефону **+7(918)465-66-44**.

ОГЛАВЛЕНИЕ

ОГЛАВЛЕНИЕ	2
ХАРАКТЕРИСТИКИ	5
Основная информация	5
Размеры	5
Скорость, вместимость и масса	5
Размещение	5
Корпус и палуба	6
Информация о двигателе	6
ПОДРОБНОЕ ОПИСАНИЕ	7
Upgrades	7
Hull & Deck Features	8
Transom	9
Cockpit / Helm	9
Salon	10
Galley	10
Companionway	11
Master Stateroom	11
Master Head - Port	11
Master Shower - Starboard	12
Mid Stateroom - Aft	12
Mid Stateroom Head/ Shower	12
Helm / Electronics	13
Bow	13
Mechanical / Engine	14
Audio & Visual Equipment	15
Electrical Systems	15
Underwater Gear	15
Tender (Upgrade)	16

Exclusions	16
Исключения	16
Отказ от ответственности	16
ФОТОГРАФИИ	17
Starboard Profile	17
Port Bow Profile	17
Hydraulic Swim Platform w/Tender	17
Aft Profile	17
Karma 5 Collage	17
Tender: Capelli 340 - 2013/Yamaha 40hp Four Stroke Motor- 2013 Motor/Model F40LA	17
Yamaha 40hp Four Stroke Motor- 2013 Motor/Model F40LA	18
Tender: Capelli 340 - 2013	18
Aft Deck Forward	18
Aft Deck Seating	18
Wet Bar w/Sink to Port	18
Helm Overview w/Teak Flooring	18
Helm w/Dual Helm Swivel Seats	19
Helm	19
Helm	19
Helm Electronics	19
Companionway	19
Salon to Aft	19
Salon L-Shaped Sofa w/Pull Out Bed (Ultraleather)	20
Salon Forward	20
Galley to Port	20
Master Stateroom Forward	20
Galley Stainless Steel Appliances	20
Master Stateroom Raised Queen Sized Bed	21
Master Stateroom (2)	21

Master Stateroom to Salon	21
Master Stateroom (3)	21
Master Head	22
Master Head Shower	22
Mid Stateroom Twin Beds w/Slide System-Converts to Queen Bed	22
Mid Stateroom (2)	22
Washer / Dryer Combo	23
Mid Stateroom (3)	23
Large Sunpad	23
Windlass Anchor	23
FLIR Night Vision System	23
Engine Room / Large Access Hatch	23
Engine Room	24
Engine Room	24
Engine Room	24
КОНТАКТЫ	25
Контактная информация	25
Телефоны	25
Время работы	25
Адрес	25

ХАРАКТЕРИСТИКИ

Основная информация

Тип судна: Моторная яхта

Модельный год: 2011

Год постройки: 2011

Страна: United States

Верх: 2363

Кубрик: Да

Размеры

Длина общая: 50' 0" (15.24m)

Ширина: 14' 8" (4.47m)

Макс. осадка: 4' 1" (1.24m)

Длина привального бруса: 51' 0"
(15.54m)

Скорость, вместимость и масса

Крейс. скорость: 28 Kts. (32 MPH)

Макс. скорость: 30 Kts. (35 MPH)

Вместимость воды: 110 Gallons

Вместимость сточного бака: 60 Gallons

Объем топливного бака: 400 Gallons

Размещение

Всего кают: 2

Спальные места: 6

Всего ком. состава: 2

Корпус и палуба

Материал корпуса: FRP

Материал палубы: Fiberglass

Комплектация корпуса: Modified V-Hull

Цвет корпуса: Blue

Дизайнер корпуса: Sea Ray

Дизайнер экстерьера: Sea Ray

Дизайнер интерьера: Sea Ray

Информация о двигателе

Двигатели: 2

Производитель: Cummins

Модель: Zeus 550 CMD

Тип двигателя: Inboard

Тип топлива: Diesel

ПОДРОБНОЕ ОПИСАНИЕ

Upgrades

- Extended Passport Warranty on Cummins motors, generator, navigation and a cruiser package till 6/28/2018
- T-Cummins Zeus Drive - 525hp
- Zeus pod Drives w/ Helm Joystick and Skyhook Station-Keeping Technology
- Cummins Spare Parts
- Dark Blue Hull
- Hydraulic Swim Platform w/Hard Bottom Inflatable
- Tender:: Capelli 340 - 2013 / Yamaha 40hp Four Stroke Motor- 2013 Motor / Model F40LA

- SmartCraft Instrumentation And VesselView
- Teak Flooring, Upper Cockpit
- Cockpit & Swim Platform - Nu-Teak
- Cockpit Air/Heat
- Cockpit Lighting, Blue/White Overhead
- Custom Wood Cockpit Table
- Cockpit Refrigerator
- Custom Windshield Cover - Black Mesh
- Custom Cushion & Post For Cockpit Table Area, Sunpad/Bed
- Canvas Dash Cover
- Mister System In Cockpit
- Raymarine E120W Chartplotter/Radar
- Raymarine E120W Chartplotter
- SAT TV to Raymarine E 120 Screen At Helm
- Raymarine AIS Broadcast w/ Receive System
- Raymarine VHF Radio w/ separate speaker
- FLIR Night Vision
- Hardtop w/ Two Independent Retractable Sunroofs, Port And Starboard
- Custom Window Tint
- UV Protection Clear Windshield & Electric Glass Panel Sunroof
- KVH SAT TV w/Direct TV, HD/DVR in Salon
- Sonos Internet Music System
- Apple TV Video System
- Rogue Wifi
- Sirius Satellite Receiver w/ Antenna
- Toshiba 32" LCD Flatscreen TV w/Remote DVD Player In Salon
- Recessed Fore-deck Sun Pad
- Drop Curtain Canvas & Bench Cover
- Glendinning Cablemaster For 50 Amp Cord
- Camera, Engine Room To Display At Helm

- (3) Underwater lighting/Blue
- Prop Speed Teflon Painted Props
- Spotlight w/Dual Halogen Bulbs
- Rod Holders (2) ea.
- Yacht Flag & Flagpole
- Windlass - All chain
- Light Wood Flooring - Salon & Galley
- Ultra-leather Interior Seating
- Innerspring Mattress, Master Stateroom
- Convertible Salon Sofa-Sleeper
- Washer/Dryer Combo
- Central Vacuum System

Hull & Deck Features

- Hydraulic Swim Platform **UPGRADE**
- Blue Hull Gelcoat **UPGRADE**
- (2) Rod Holders **UPGRADE**
- Spotlight w/Dual Halogen Bulbs **UPGRADE**
- Yacht Flag & Flag Pole **UPGRADE**
- Hardtop Sunroof w/ (2) ea. Electric Sunroofs
- Bow Rail, 316 Stainless Steel w/Welded Stanchions, Intermediate Rails & Life Lines
- Canvas Colors (Blue or Black)
- Cleats, Custom Sea Ray Thru- Bolted - Stainless Steel (8)
- Handrails, 316 Stainless Steel
- Hull Windows, Stainless Steel (4 Opening, 2 Fixed)
- Lights, Navigation
- Portlights, Stainless Steel (3 Opening, 3 Fixed)
- Resin, High-Performance Vinylester
- Rub Rail, PVC w/Stainless-Steel Insert
- Storage, Transom Wall (For Fenders & Gear)
- Stringer System, Fiberglass
- Swim Platform, Integral/Extended w/Concealed Stainless-Steel Four-Step Swim Ladder w/Integral Grab Handle
- Thru-Hull Fittings, Stainless Steel
- Toe Rail, Molded Fiberglass - Deck
- Vent System, Engine Room - Integral w/Stainless-Steel Accents
- Windshield, Tempered/Tinted Curved Glass w/Aluminum Frame & Electric Front Vents
- Windshield Washer System
- Windshield Wipers w/Delay & Speed Control
- **Canvas** (Sunbrella): *Aft Curtain w/Bungee Cords
- **Windlass System:** *All Chain **UPGRADE** *Anchor. Galvanized *Anchor Chute, Stainless Steel *Anchor Chain Storage w/Gas-Assisted Hatches (2) *Anchor Washdown Spigot

w/Hose *Foot Switches

Transom

- Tender: Capilli 340 - 2013 / Yamaha 40hp, 4 stroke motor - 2013 motor / Model F40LA **UPGRADE**
- Hydraulic Swim Platform - Teak/ Nu-Teak **UPGRADE**
- Teak on transom and hydraulic lift **UPGRADE**
- Glendenning cable master for 50 amp power

Cockpit / Helm

- Air/Heat w/Defroster **UPGRADE**
- Teak Flooring - Nu-Teak **UPGRADE**
- Custom wood cockpit table **UPGRADE**
- Canvas dash cover **UPGRADE**
- Refrigerator **UPGRADE**
- Satellite TV w/ Receiver **UPGRADE**
- Starcraft vessel view **UPGRADE**
- AC at helm **UPGRADE**
- Sony stereo controls **UPGRADE**
- Sony marine subwoofers and speakers **UPGRADE**
- USB & Audio inputs **UPGRADE**
- ACR Spotlight control **UPGRADE**
- Skyhook w/Zeus joystick control **UPGRADE**
- Electric shifters **UPGRADE**
- Helm cover **UPGRADE**
- Dual helm seat swivels **UPGRADE**
- Misters - 4ea in hardtop **UPGRADE**
- Blue & White overhead dimming lights **UPGRADE**
- Flat screen TV on mount **UPGRADE**
- 2nd Sony remote control **UPGRADE**
- VHF Raymarine - Ray240 **UPGRADE**
- RayMarine separate VHF speaker **UPGRADE**
- Autopilot through Zeus **UPGRADE**
- RayMarine HD radar **UPGRADE**
- (2) Raymarine E120 W screens **UPGRADE**
- Flir night vision **UPGRADE**
- Window tint **UPGRADE**
- Ritchie compass
- Electric windshield vent - center front glass windshield
- Sliding cabin door

- Wet bar w/sink
- Sink
- Large U-Shape seating w/storage
- AC control
- Transom door
- Access hatch to engine room
- Beverage Holders (10)
- Floor Liner, Fiberglass - Self-Bailing
- Handrails, 316 Stainless Steel
- Independent Retractable Sunroofs (2) & Overhead Lighting (Hardtop)

Salon

- Wood Flooring **UPGRADE**
- Seating, L-Shaped Sofa w/Pull-Out Bed (Ultraleather) **UPGRADE**
- Wood blinds **UPGRADE**
- 32" Sony flat screen TV **UPGRADE**
- DVD CD player **UPGRADE**
- Apple TV video system **UPGRADE**
- Sonos internet music system **UPGRADE**
- IPod hook up **UPGRADE**
- Direct TV Sat receiver **UPGRADE**
- KVH track vision **UPGRADE**
- Skylight overhead, Flush Mount w/Retractable Sunshade
- Three large windows on each side of Salon
- Dinette, High gloss table
- Dark Cherry Wood
- Entertainment Center - Gaming System Port - iPod Interface w/Docking Station - MP3 Port w/12V Outlet - Stereo, Sony 12V AM/FM w/Single CD, Sirius Satellite Receiver w/Antenna, Amplifier & Speakers (4) - Storage Cabinet - CD & Videotapes - TV, 32" Flatscreen LCD (120V) w/Remote DVD Player
- Switches to play music in cockpit or cabin separately
- Mirror, Wall Accent
- Storage, Gunwale Cabinets

Galley

- Wood Flooring **UPGRADE**
- Refrigerator/Freezer
- Stove, Kenyon Two-Burner
- Dark Cherry Wood Finish
- Coffeemaker, 120V

- Countertop in Mystic Black
- Stainless-Steel Sink, Single-Lever Faucet & Sink Cover
- Handrail, Stainless Steel
- Sharp Microwave/Convection Oven w/Stainless-Steel Front - 120V
- Power Vent, 12V w/Stainless-Steel Grill
- Storage, Drawers w/Cutlery Insert
- Storage, Upper & Lower w/Designated Plate & Glass Storage
- Trash Receptacle

Companionway

- Central Vacuum System **UPGRADE**
- Washer/Dryer Combo

Master Stateroom

- Raised Queen sized bed **UPGRADE**
- Wood floors at entrance **UPGRADE**
- Sony LCD flatscreen TV **UPGRADE**
- DVD Player **UPGRADE**
- Direct TV SAT receiver **UPGRADE**
- Dark Cherry Wood Finish
- Wood Trim
- Carpet
- Easy access walk around for master bed
- Door, Privacy (Sliding Pocket) w/Full-Length Mirror from Salon
- Hanging Lockers, cedar lined (2) w/Lights - Port & Starboard
- Hatch, Deck Vent - Translucent w/Locks & Sky Screen Cover (Trapezoid)
- Mirrored Rope Locker - Bulkhead
- Storage, Side Shelves

Master Head - Port

- Door, Privacy - Access from Master Stateroom
- Handrails, Stainless Steel
- VacuFlush Head
- Power Vent, 12V
- Robe Hook
- Storage, Gunwale Cabinet

- Storage, Medicine Cabinet - Mirrored
- Vanity w/Solid-Surface Countertop, Sink, Faucet & Storage Below - To Port
- Bathroom Tissue Holder

Master Shower - Starboard

- Privacy door Access from Master Stateroom
- Shower w/Seat & Adjustable Shower Wand
- Shower Curtain
- Handrail, Stainless Steel
- (2) Towel Rings

Mid Stateroom - Aft

- Direct TV SAT receiver **UPGRADE**
- Dark Cherry Wood Finish
- Beds, Twin - w/Slide System to Convert to Queen-Size Bed
- Storage Under Beds
- Door, Privacy
- Carpet
- Hanging Locker w/Light & Shelves
- Portlight, Stainless steel opening
- Storage, Cabinets – Starboard

Mid Stateroom Head/ Shower

- Curtain, Shower
- Door, Privacy - Access from Mid-Stateroom
- Handrail, Stainless Steel
- Head, VacuFlush
- Robe Hook
- Storage, Medicine Cabinet - Mirrored
- Shower w/Seat & Adjustable Shower Wand
- Towel Ring
- Vanity w/Solid-Surface Countertop, Sink, Faucet & Storage Below

Helm / Electronics

Control Station:

- Joystick Control, Zeus w/Skyhook **UPGRADE**
- Alarms, High-Water - Bilge & Cabin
- Compass
- Dash, Gel Coated - Agate
- Emergency Start System - Engines
- Horn, Air - Single Trumpet
- Power Steering, Hydraulic w/Wood Accent Isotta Tilt Wheel
- Shift & Throttle Controls - Electronic (MerCruiser DTS)
- **SmartCraft Diagnostics:** *Instrumentation: Custom Sea Ray SmartCraft w/Low-Glare Blue Night Lighting & Chrome Bezels *4-in-1 Multigauges (2) (Includes: Fuel Level, Oil Pressure, Voltmeter & Water Temperature) *Tachometers (2)
- **SmartCraft VesselView Display:** * Propulsion: Engine Hour Meters, Engine Status, Performance & Fuel, Peak Performance, Troll Control & Cruise Control *Vessel: Vessel Status, Tank Status, Steering Position & Generator Data *Environment & Navigation: GPS Interface, Depth & Water Temperature, Depth Alerts, Trip Log Information, Fuel to Waypoint Data & Navigation Data *Active Alarms/Details *Alarm History/Details
- Switch Panel - High Gloss (Backlit)
- Switches, Illuminated Weatherproof Rockers & Electronic Dimmer Control

Electronics:

- (2) Raymarine E120W Chart Plotter/Radar **UPGRADE**
- Ritchie compass **UPGRADE**
- VHF Raymarine - Ray240 **UPGRADE**
- RayMarine separate VHF speaker **UPGRADE**
- Autopilot through Zeus **UPGRADE**
- Precision Pilot w/Skyhook **UPGRADE**
- RayMarine HD radar **UPGRADE**
- (2) Raymarine E120 W screens **UPGRADE**
- Flir night vision **UPGRADE**
- 8' Fiberglass Antenna
- Smartcraft Vesselview System
- Electronics Circuit, 50 Amp/12V
- ACR Spotlight

Bow

- Large Sunpad **UPGRADE**
- Windlass Anchor - All Chain **UPGRADE**
- ACR Spotlight

- Cupholder storage

Mechanical / Engine

Engines:

- T-Cummins Zeus Drive 550 QSC / Diesel
- Hours: Port 528 Starboard 283
- Starboard motor complete replacement, Sept 2012 **UPGRADE**
- Extended Passport Warranty till 6/28/2018 **UPGRADE**covers motors, generator, navigation & cruiser pkg

Generator:

- 9.0 kW Onan - Diesel (120/240V/60 Cycle) w/Sound Shield
- Hours: 685
- Remote Start
- Muffler
- Closed Cooling
- Fuel Filter
- Seacock & Seawater Strainer

Engine Room:

- Engine Room Camera **UPGRADE**
- Large Access Hatch
- Sea Fire Fixed Fire Extinguishing System
- Bilge Pumps, 12V Automatic (2)
- Bilge Pumps, 12V Automatic High- Water (1 Bilge, 1 Cabin)
- Blowers, 12V Bilge (2)
- Exhaust, Underwater - Patented
- Fire Suppression System - Automatic w/Manual Pull
- Gel-Coated Engine Room
- Insulation, Engine Room - 2" w/ Loaded Vinyl Barrier
- Ladder, Stainless Steel - Removable
- Lighting, 12V
- Oil Changer System - Engines, Transmissions & Generator

Water System:

- Freshwater Washdown Spigots w/ Hoses - Transom, Engine Room & Anchor Locker
- PressureWater System w/12V Pump & Charcoal Filtration System
- Manifold System w/Shutoff Valves
- Shower, Cockpit - Single-Lever Hot & Cold w/Stainless-Steel Door, Braided Hose & Ergonomic Shower Wand

- Water Heater, 240V (20 Gallon)
- Water Inlet, Dockside

Waste System:

- Macerator w/Seacock Interlock System **UPGRADE**
- Head System (VacuFlush)
- Holding Tank Level Indicators - MDP & Heads
- Holding Tank w/Dockside Pump-Out
- Sump Box w/Pump - Automatic

Audio & Visual Equipment

- Apple TV Video System **UPGRADE**
- Sonos Internet Music System **UPGRADE**
- Rogue Wifi **UPGRADE**
- KVH SAT TV w/ (4) ea. Receivers **UPGRADE**

Electrical Systems

- Cablemaster Glendenning shore power cord system
- Batteries, 8-D w/Boxes (2)
- Battery Charger/Converter 120V/50 Amp/12V
- Battery Charger Overcurrent Protection
- Battery Switches, 2-Way Solenoid Activated (MDP & Bilge)
- Cable TV System w/Inlet (Includes Phone Inlet), TV & Phone Shore Cords, Coax Outlets, Gain Control & Omni Directional Antenna
- Panel, DC Circuit Breaker - Remote
- Panel, DC Main Breaker
- Panel, Main Distribution - AC
- Panel, Main Distribution - DC
- Shore Power, Cablemaster™ (Glendinning) 240V/50 Amp w/75' Cord & Wireless Remote
- Transformer, Shore Power Isolation - 240V/50 Amp
- Wiring, Color-Coded w/Chafe Protection

Underwater Gear

- (3) Underwater Lighting LED System - Blue **UPGRADE**
- Bonding System w/Zinc Hull Plate
- Propellers, Stainless-Steel Counter- Rotating

- Seacocks on All Underwater Fittings
- Seawater Strainers
- Trim Tabs, Hydraulic (Integrated w/ Zeus System)

Tender (Upgrade)

- Capelli 340 - 2013 / Yamaha 40hp Four Stroke Motor- 2013 Motor / Model F40LA
- Teak on Topside
- Seating for (4)
- Yamaha Tachometer and Speed Gauges
- Depth Gauge
- Running Lights
- Blue Bimini
- Storage

Exclusions

- Owners Personal Items

Исключения

При продаже яхты исключаются личные вещи владельца.

Отказ от ответственности

Компания предоставляет описание судна или яхты добросовестно, но не может гарантировать точность этой информации, а также не ручается за техническое состояние. Покупатель должен проинструктировать своих агентов или оценщиков исследовать представленную информацию более подробно, по собственному желанию. Продажа судна или яхты, изменение цены или снятие с продажи будет происходить без предварительного уведомления.

ФОТОГРАФИИ

Starboard Profile



Port Bow Profile



Aft Profile



Hydraulic Swim Platform w/Tender



Karma 5 Collage



**Tender: Capelli 340 - 2013/Yamaha 40hp
Four Stroke Motor- 2013 Motor/Model F40LA**



Tender: Capelli 340 - 2013



**Yamaha 40hp Four Stroke Motor- 2013
Motor/Model F40LA**



Aft Deck Seating



Aft Deck Forward



Wet Bar w/Sink to Port



Helm Overview w/Teak Flooring



Helm w/Dual Helm Swivel Seats



Helm



Helm



Helm Electronics



Companionway



Salon to Aft



Salon Forward



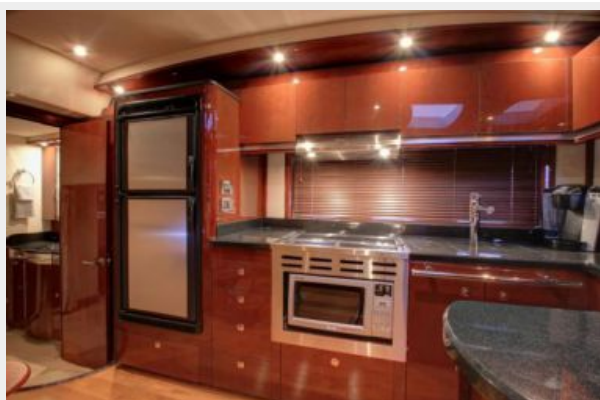
**Salon L-Shaped Sofa w/Pull Out Bed
(Ultraleather)**



Galley to Port



Galley Stainless Steel Appliances



Master Stateroom Forward



Master Stateroom Raised Queen Sized Bed



Master Stateroom (2)



Master Stateroom (3)



Master Stateroom to Salon



Master Head



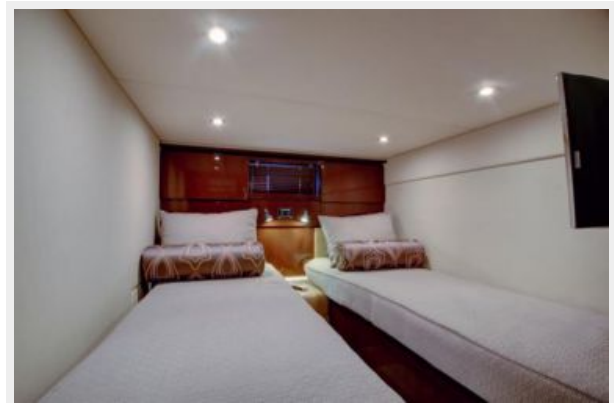
Master Head Shower



**Mid Stateroom Twin Beds w/Slide System-
Converts to Queen Bed**



Mid Stateroom (2)



Mid Stateroom (3)



Washer / Dryer Combo



Large Sunpad



Windlass Anchor



FLIR Night Vision System



Engine Room / Large Access Hatch



Engine Room



Engine Room



Engine Room



КОНТАКТЫ

Андрей Шестаков (Andrey Shestakov) – ведущий яхтенный брокер отдела продаж яхт и судов компании Shestakov Yacht Sales Inc. Официальный представитель Shestakov Yacht Sales Inc. для русскоговорящих клиентов в центральном офисе компании в Майами/Форт Лодердейл/Флорида/США.

Контактная информация

Email: andrey@shestakovyachtsales.com

Web: shestakovyachtsales.com

Телефоны

Краснодарский край: **+7(918)465-66-44**

США, Майами, Флорида: **+1(954)274-4435**

Время работы

Понедельник – Суббота: **9:00 - 21:00**
EDT

Воскресенье: **Закрето**

Адрес



Harbour Towne Marina, 850 NE 3rd St,
STE 213, Dania, FL 33004