

## JUST BELIEVE! — SILVERTON



**Builder:** SILVERTON

**Year Built:** 2000

**Model:** Motor Yacht

**Price:** PRICE ON APPLICATION

**Location:** United States

**LOA:** 39' 0" (11.89m)

**Beam:** 14' 1" (4.29m)

**Max Draft:** 3' 3" (0.99m)

Our experienced yacht broker, Andrey Shestakov, will help you choose and buy a yacht that best suits your needs **Just Believe! — SILVERTON** from our catalogue. Presently, at Shestakov Yacht Sales Inc., we have a wide variety of yachts available on our sale's list. We also work in close contact with all the big yacht manufacturers from all over the world.

If you would like to buy a yacht **Just Believe! — SILVERTON** or would like help answering any questions concerning purchasing, selling or chartering a yacht, please call **+1(954)274-4435**

# TABLE OF CONTENTS

TABLE OF CONTENTS	2
SPECIFICATIONS	5
Overview	5
Basic Information	5
Dimensions	5
Speed, Capacities and Weight	5
Accommodations	6
Hull and Deck Information	6
Engine Information	6
DETAILED INFORMATION	7
Electronics	7
Inside Equipment	7
Electrical Equipment	7
Outside Equipment/Extras	7
Covers	8
Exclusions	8
Exclusions	8
Disclaimer	8
PHOTOS	9
Starboard Salon	9
Salon	9
Salon	9
Entertainment System	9
Galley	9
Full Size Fridge	9
Oven	10
Master Stateroom	10
Master Closet	10

---

Master Head	10
Master Separate Shower	11
Forward Berth	11
Forward Head	11
Engine Room	11
Starboard Engine	11
Port Engine	11
Bridge Seating	12
Main Helm	12
Forward Bridge Seating	12
Port Sidewalk	12
Starboard Sidewalk	13
Sidewalk	13
Forward Deck	13
Bow	13
Aft Deck Entry	14
Windlass	14
Spacious Aft Deck	14
Aft Cockpit	14
Stern	15
Wet Bar	15
Extended Swim Platform	15
Starboard Side	15
Port Side	16
Kept Undercover	16
Forward View	16
Forward Port Quarter	16
Silverton 392 Layout	16
Silverton 392 Factory Interior Photos	16

---

---

Silverton 392 Factory Interior Photos	17
Factory Profile Photo	17
CONTACTS	18
Contact details	18
Telephones	18
Office hours	18
Address	18

---

# SPECIFICATIONS

---

## Overview

---

If you are looking for a very affordable, maxi-volume cruising yacht you will find much to like in this 2000 Silverton 392 Motor Yacht. By eliminating the side decks in favor of elevated staircases, the "SideWalk" flybridge steps greatly enhance safety, space utilization, and mobility. The added benefit lies below in the gunnel to gunnel salon that rivals vessels 10 feet longer. By opening up the salon, both full-width and full-length, owners can entertain, dine, or just relax in this truly spacious atmosphere. Forward and aft are good sized staterooms with their own private heads with stall showers. Both staterooms feature innerspring mattresses for sleeping comfort. She rides on a high-freeboard modified-V hull with a solid fiberglass bottom and wide 14-foot, 1-inch beam. Hands down, the principal feature of her is her enormous full beam salon complete with cherry joinery, Ultra leather sofa, large dinette, and full-service galley which even features an oven. Top side, the flybridge is arranged with bench seating fore and aft of the helm console. The afterdeck is a large area with a hardtop and wet bar. Note the curved staircase descending to the swim platform. She is in good shape and just had her risers and manifolds replaced. She is priced for a quick sale. Call for your easy showing today!

## Basic Information

---

**Category:** Motor Yacht

**Model Year:** 2000

**Year Built:** 2000

**Country:** United States

## Dimensions

---

**LOA:** 39' 0" (11.89m)

**Beam:** 14' 1" (4.29m)

**Max Draft:** 3' 3" (0.99m)

**Clearance:** 18' 4" (5.59m)

## Speed, Capacities and Weight

---

**Water Capacity:** 100 Gallons

**Holding Tank:** 60 Gallons

**Fuel Capacity:** 286 Gallons

---

## Accommodations

---

**Total Cabins:** 2

**Total Berths:** 2

**Total Heads:** 2

---

## Hull and Deck Information

---

**Hull Material:** Fiberglass

**Hull Configuration:** Modified V-Hull

**Hull Finish:** Plastic

---

## Engine Information

---

**Engines:** 2

**Manufacturer:** Crusader

**Model:** 7.4 L MPI

**Engine Type:** Inboard

**Fuel Type:** Gas

---

## DETAILED INFORMATION

---

### Electronics

---

- VHF
- New flatscreen TV set
- Cockpit speakers
- Compass
- **New color GPS / chartplotter being installed by the seller**
- Onkyo Receiver
- Onkyo 6 Disc CD player / changer
- Samsung Bluray player
- DVD / VHS player

### Inside Equipment

---

- Electric bilge pump
- Hot water
- Deep freezer
- Air conditioning
- Heating
- Battery charger
- Refrigerator
- Microwave oven
- Electric head
- Oven

### Electrical Equipment

---

- Generator
- Shore power inlet
- Electrical Circuit: 110V

### Oustide Equipment/Extras

---

- Swimming ladder
- Wet bar
- Electric windlass

---

## Covers

---

- Bimini top
- Console cover
- Forward privacy curtain for salon

---

## Exclusions

---

Owners personal items

---

## Exclusions

---

Owner's personal belongings.

---

## Disclaimer

---

The Company offers the details of this vessel or yacht in good faith but cannot guarantee or warrant the accuracy of this information nor warrant the condition of the vessel. A buyer should instruct his representatives, agents, or his surveyors, to investigate such details as the buyer desires validated. This vessel or yacht is offered subject to prior sale, price change, or withdrawal without notice.



# PHOTOS

**Starboard Salon**



**Salon**



**Salon**



**Entertainment System**



**Galley**



**Full Size Fridge**



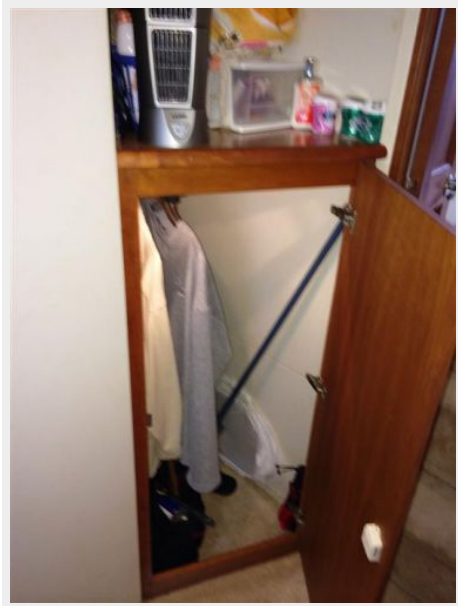
Oven



Master Stateroom



Master Closet



Master Head





**Master Separate Shower**



**Forward Berth**



**Forward Head**



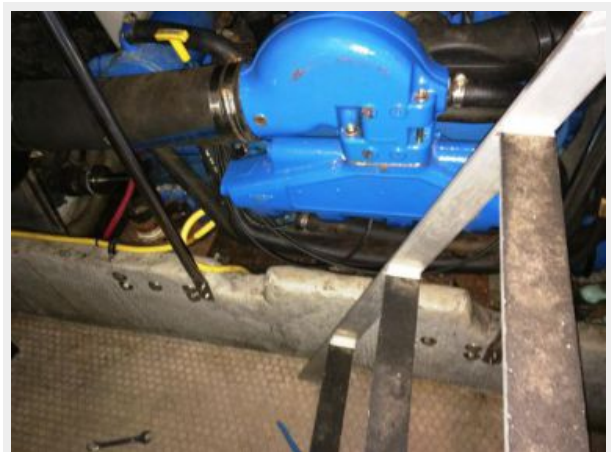
**Engine Room**



**Starboard Engine**



**Port Engine**



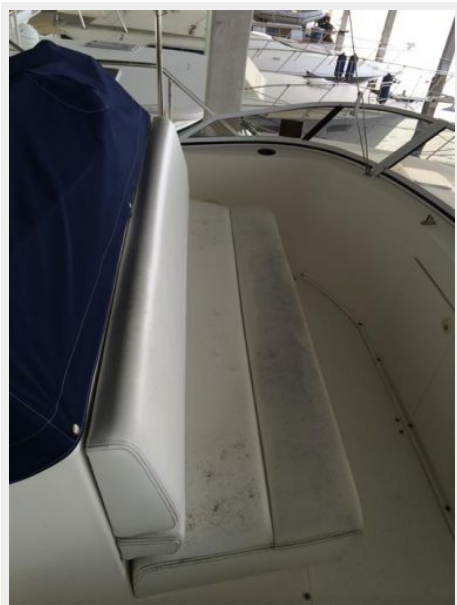
**Main Helm**



**Bridge Seating**



**Forward Bridge Seating**



**Port Sidewalk**



**Starboard Sidewalk**



**Sidewalk**



**Forward Deck**



**Bow**





**Windlass**



**Aft Deck Entry**



**Spacious Aft Deck**



**Aft Cockpit**



**Wet Bar**



**Stern**



**Extended Swim Platform**



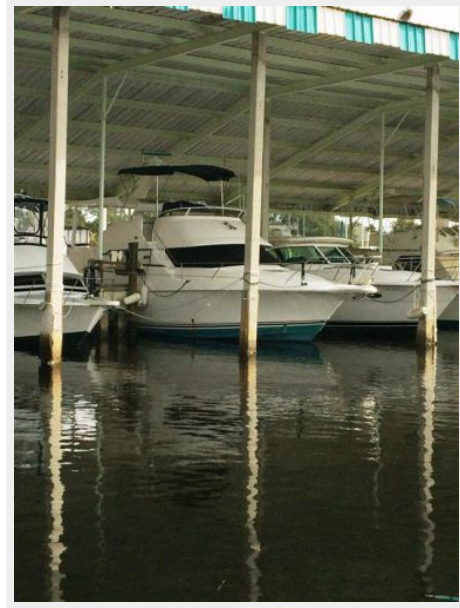
**Starboard Side**



Port Side



Kept Undercover



Forward View



Forward Port Quarter



Silverton 392 Layout



Silverton 392 Factory Interior Photos





### Silverton 392 Factory Interior Photos



### Factory Profile Photo



---

# CONTACTS

---

Andrey Shestakov, leading yacht broker of the sales department of Shestakov Yacht Sales Inc. Shestakov Yacht Sales Inc., the official representative of the Miami/Fort Lauderdale FL headquarters.

---

## Contact details

---

Email: [andrey@shestakovyachtsales.com](mailto:andrey@shestakovyachtsales.com)

Web: [shestakovyachtsales.com/en/](http://shestakovyachtsales.com/en/)

---

## Telephones

---

USA: +1(954)274-4435

---

## Office hours

---

Monday – Saturday: **9:00 - 21:00** EDT

Sunday: **closed**

---

## Address

---



Harbour Towne Marina, 850 NE 3rd St,  
STE 213, Dania, FL 33004