

GRIZZLY — VIKING



Builder: VIKING

Year Built: 2013

Model: Sport Fisherman

Price: PRICE ON APPLICATION

Location: United States

LOA: 42' 0" (12.80m)

Beam: 15' 10" (4.83m)

Max Draft: 3' 5" (1.04m)

Our experienced yacht broker, Andrey Shestakov, will help you choose and buy a yacht that best suits your needs **Grizzly — VIKING** from our catalogue. Presently, at Shestakov Yacht Sales Inc., we have a wide variety of yachts available on our sale's list. We also work in close contact with all the big yacht manufacturers from all over the world.

If you would like to buy a yacht **Grizzly — VIKING** or would like help answering any questions concerning purchasing, selling or chartering a yacht, please call **+1(954)274-4435**

TABLE OF CONTENTS

TABLE OF CONTENTS	2
SPECIFICATIONS	5
Overview	5
Basic Information	5
Dimensions	5
Speed, Capacities and Weight	5
Accommodations	6
Hull and Deck Information	6
Engine Information	6
DETAILED INFORMATION	7
Command Deck	7
Salon	7
Galley	8
Master Stateroom	8
Head	9
Guest Stateroom	9
Decor	10
Electronics	10
Electrical System	11
Engine Room	11
Mechanical Equipment	12
Cockit	12
Hull & Deck	13
Tower	14
Tower Electronics	15
Fishing Equipment	15
Optional Equipment	16
Exclusions	16

Exclusions	16
Disclaimer	16
PHOTOS	17
Salon-At	17
Salon/Dinette	17
Control Panel	17
Galley	17
Galley	17
Master Stateroom	17
Head	18
Master Stateroom	18
VIP Stateroom	18
Helm	18
Helm Seating	19
Helm Seating	19
Command Bridge	19
Helm Station	19
Engine Room	19
Engine Room	19
Engine Room	20
Engine Room	20
Miya Epoch Teaser	20
Hard Top	20
Molded Windshield	20
Anchor/Rode & Windlass	20
Tower Helm	21
Tower Fusion Remote	21
Rupp Outriggers	21
Tower Electronic Box	21

Cockpit	21
Release Launcher Marine	21
Fish Box	22
Tackle Storage	22
Palm Beach Tower	22
Tackle Storage	22
Transom Profile	22
CONTACTS	23
Contact details	23
Telephones	23
Office hours	23
Address	23

SPECIFICATIONS

Overview

Like new condition-----ESC until 2019-----Loaded with options and electronics Full Engine Service Completed April 2015!!!!

This 2013 Viking 42 Open is loaded with extras and meticulously maintained by one of Team Galati's top captains. She is the perfect boat to move up from a large center console. The owner is ready to move up after the past year of enjoying this beautiful fishing machine loaded with full Garmin Electronics, Miya Epoch electric teaser reels, Eskimo Ice Chipper, Release Marine rocket launcher w/custom teak table top option, teak mezzanine and more. She is in like new condition with ESC on engines, genset and major accessories until August 2019.

Basic Information

Category: Sport Fisherman

Sub Category: Open

Model Year: 2013

Year Built: 2013

Country: United States

Dimensions

LOA: 42' 0" (12.80m)

Beam: 15' 10" (4.83m)

Max Draft: 3' 5" (1.04m)

Speed, Capacities and Weight

Displacement: 32699 Pounds

Water Capacity: 125 Gallons

Fuel Capacity: 525 Gallons

Accommodations

Total Cabins: 2

Sleeps: 4

Total Heads: 1

Hull and Deck Information

Hull Material: Fiberglass

Engine Information

Engines: 2

Manufacturer: Cummins

Model: QSC-600 w/Zeus Pods

Engine Type: Inboard

Fuel Type: Diesel

DETAILED INFORMATION

Command Deck

- Molded Fiberglass Wrap Around Windshield
- Center Console Walk Around Helm
- Teak Helm Pod
- Electronic Single Lever Controls
- Joystick Engine Control
- Offshore 3340 Ship's Safety Monitoring System
- Teak Helm & Companion Chairs

Miya Epoch US-9 electric teaser reels

- Port & Starboard Settees w/ Storage
- Command Deck Helm Air Conditioning
- Refrigerated Drink Box
- Insulated Drink Box
- Stereo Speakers
- Engine Room Access Hatch

Salon

Viking Smart Decor

- Air Conditioning w/ Reverse Cycle Heat
- Amtico Flooring, Vinyl
- Cabinetry w/ Drawers & Finished Maple Interiors
- Lighting, Overhead Recessed in Headliner
- Main Electrical Service Panel, AC/ DC Backlit for Easy Viewing
- Sliding Door to Command Deck

- Stereo Speakers - Multi-Directional
- Stereo System - Sony
- 22" Flat Screen TV - Samsung
- Dinette Table w/ High Gloss Finish
- U-Shaped Lounge w/ Storage Below

Galley

Nova Kool Brand Under counter Refrigerator & Freezer

- Corian Countertop
- Amtico Flooring
- Storage Cabinets & Drawers
- Two Burner Surface Mounted Kenyon Stove
- Microwave/ Convection Oven - Sharp Carousel
- LED Overhead Lighting
- Water Tank Level Gauge
- Exhaust Fan
- Corian Sink Recessed in Countertop w/ Faucet
- Central Vacuum Unit Connection

Master Stateroom

Queen Size Walk-Around Bed w/ Lift Up Top & Storage

- Bedsread - Quilted, Designer Style
- Reading Lights, Overhead w/ Separate Switches
- Drawer Storage (2) under Bed
- Hanging Locker, Maple Lined
- Carpeting

- 19' Flat Screen TV - Samsung
- Air Conditioning w/ Reverse Cycle Heat
- Lighting Overhead & Decorative Indirect

Head

- Fiberglass Stall Shower w/ Brushed Aluminum Door
- Shower Light
- Towel Bars & Rings
- Sealand Vacuflush Freshwater Toilet
- Exhaust Fan
- Corian Vanity Countertop & Sink
- Medicine Cabinet w/ Mirrored Doors (2)
- Lower Vanity w/ Face
- Linen Storage
- Lights, Recessed in Soffit
- Amtico Vinyl Floor
- Air Conditioning w/ Reverse Cycle Heat
- Receptacle, 120V

Guest Stateroom

- Side by Side Twin Berths (2)
- Bedsreads, Quilted, Designer Style
- Lighting, Overhead
- Night Stand w/ Storage Drawer
- Storage Lockers (20)
- Carpeting

- Air Conditioning w/ Reverse Cycle Heat, Fan Control
- Stereo Speakers Recessed in Headliner
- Flat Screen TV

Decor

Teak High Gloss Finish

- Viking Smart Decor
- Sofa – Ultra Leather -
- Headliner - Opus Natural
- Brushed Nickel Cover Plates for Switches & Receptacles
- Satin Nickel Interior Light Trim
- LED Interior Lights
- Dimmers on Overhead LED Lights
- Polished Corian Countertops - Burl Beach - Galley & Head
- Amtico Teak & Holly Flooring - Salon; Galley; Head

Electronics

- (2)Garmin 8212 12” Display GPS, Plotter , Sounder
- Garmin 4kw Open Array radar
- SATTV KVH M3ST
- Smart Craft Auto Pilot Integrated w/ Cummins/ Zeus Engine Control
- ICOM IC-M504 VHF Radio w/ Antenna System
- ACR RCL 100 Remote Searchlight
- Smart Craft Digital Engine Displays
- Ritchie Powerdamp Plus Compass

Electrical System

- Phasor Diesel Generator, 12KW
- 24Volt DC Ship's Service
- 24Volt/ 12Volt Power Supply
- Batteries - 24Volt Banks Mounted in Fiberglass Storage Boxes
- Battery Chargers (2)
- Battery Distribution Panel
- Battery Parallel System for Main Engines & Generator
- Bonded Electrical System w/ Ground Plate
- Color Coded, Labeled & Numbered Wiring System
- Master Electrical Control Panel Located in Salon w/ 24V/ 120V Circuit Breakers
- Receptacles, 120Volt Duplex w/ GFCI
- Voltage Stabilizer Isolation Transformer

Engine Room

Full Engine Service Completed April 2015!!!! •Twin

Cummins 600hp Diesels w/ Zeus Pod Drives

- Engine Hours - 520
- Generator Gas-Water Separator
- Awlgrip Engine Room & Forward Bilges
- Oil Change System for Engines & Generator
- Racor Fuel Filters
- Engine Access via Hydraulically-Actuated Hinged Mezzanine
- Fresh Water Cooling
- Fire Control System
- Fuel Shut Off Valves

- Thermal & Acoustical Insulation
- Auto Trim Tabs Feature
- Engine Alarm System

Mechanical Equipment

- Blister Resistant Modified Epoxy Resin
- Custom Blended Polyester Resin
- High Performance Isophthalic Gelcoat
- Non-Skid Molded-In for Traction & Durability
- Stringers, Fiberglass Encapsulated Foam
- Vacuum Bagged Composite Bulkheads
- Infused Fiberglass Tanks: Fuel, Freshwater, & Holding Tank
- Fiberglass Side Thru-Hulls
- Bomar Foredeck Hatch
- Foredeck Anchor Locker
- Anchor Locker w/ Freshwater Washdown
- Stainless Steel Bow, Spring, & Stern Cleats w/ Backing Plates
- Lewmar Windlass

Cockit

120 Square feet

Fusion Stereo at helm, remotes in Cockpit and tower

Release marine Rocket launcher w/custom teak table top

Teak mezzanine and helm and companion seat pods (flooring)

- Observation Mezzanine - Port & Starboard Aft Facing Lounges
- Eskimo Crushed Ice Machine w/ Discharge in Cockpit Sole

- Live Baitwell in Transom Box
- Molded-In Insulated Fishboxes (2)
- Cockpit Freezer
- Tackle Drawers (2)
- Walk-Thru Transom Door w/ Lift Gate
- Dockside Water Connection
- Fresh Water Washdown
- Sea Water Washdown
- Engine Room Access thru Hydraulically Actuated Mezzanine
- Dockside Electric Connection 50 Amp/ 220 Volt
- Cablemaster Power Cord Reel
- Cable TV & Telephone Connections
- Indirect Rope Lighting under Coaming
- Fiberglass Step Box w/ Storage
- Transom Swim Steps

Hull & Deck

- Blister Resistant Modified Epoxy Resin
- Custom Blended Polyester Resin
- High Performance Isophthalic Gelcoat
- Non-Skid Molded-In for Traction & Durability
- Stringers, Fiberglass Encapsulated Foam
- Vacuum Bagged Composite Bulkheads
- Infused Fiberglass Tanks: Fuel, Freshwater, & Holding Tank
- Fiberglass Side Thru-Hulls
- Bomar Foredeck Hatch

- Foredeck Anchor Locker
- Anchor Locker w/ Freshwater Washdown
- Stainless Steel Bow, Spring, & Stern Cleats w/ Backing Plates
- Lewmar Windlass

Tower

Custom Palm Beach Towers: Tuna Tower w/ Molded Top, 42' Viking Open, Single Perimeter Rail, 4' Gap, Brushed Pipe, (2) Antenna Standoffs

- Recessed Lights, I2 Systems, (6) Tri Color
- Radar Pod Triangular Style
- Recessed Teaser Door Push Style Bracket
- Molded One Piece Standing Platform
- Molded 4 in 1 12V LED Light Pod Capri Style
- Control Box 60" w/ Flush Mounted Compass
- Tower Sunshade Molded Top Welded Antenna Mounts
- Rod Holder Polished Weld to Rail behind Hardtop
- Rod Holder Polished Weld to Aft Legs
- Outriggers Rupp 31' – 2-Spreader, Aft Lay down
- Outriggers - Rupp, Mounted on Hardtop
- Center Rigger - Rupp
- Electronic Controls & Steering for Pod Drive
- Navigation Lights: Port, Starboard, & Stern Molded
- Bench Seat w/ Backrest
- Enclosure 4 Sided - Costa Clear, Track to Track
- Electrical Wiring & Hookup, Recessed Lights, Spreader Lights,
- Anchor/ Masthead Light, Bond Tower

- Horns Mounted under Control Box
- Control Box Cover

Tower Electronics

- Garmin 8208 8" w/ GPS/ Radar/ Fish Finder
 - ICOM VHF Radio Command Mic
 - Furuno RD 33 Digital Depth/ Sea Temp Repeater
 - Ritchie Compass
- Fusion Radio Remote

Fishing Equipment

- Custom Palm Beach Towers Tuna Tower
- Rupp Outriggers w/ Double Spreaders
- Rupp Center Rigger
- Recessed Teaser Door for Future Installation of Teaser Reels
- Miya Epoch electric teaser reels
- Tower Rocket Launcher w/ (6) Rod Holders
- Rod Holders Welded to Aft Tower Legs (4)
- Cockpit Rod Holders (4)
- Cockpit Observation Mezzanine w/ Bait Freezer
- Live Baitwell in Transom Box
- Eskimo Ice Machine
- Insulated Fish Boxes (2)
- Tackle Drawers (2)
- Transom Door w/ Lift Gate
- Sea Water & Freshwater Washdown

Optional Equipment

- Cockpit Freezer
- Refrigerated Drink Box
- Transom Box Live Bait Well
- Command Deck Reverse Cycle Air Conditioning
- Electronic Single Lever Controls for Pod
- Upgrade Helm Chairs to Teak w/ Stainless Steel Pedestals (3)
- Eskimo Ice Machine
- Oil Changing System for Main Engines & Generator
- Cable Master Shore Power Cord Reel
- Amtico Teak & Holly Cabin Sole
- Upgrade Power to Cummins QSC-600 w/ Zeus Drive
- Clear Cote Tower

Exclusions

- Fishing gear
- Personal effects

Exclusions

Owner's personal belongings.

Disclaimer

The Company offers the details of this vessel or yacht in good faith but cannot guarantee or warrant the accuracy of this information nor warrant the condition of the vessel. A buyer should instruct his representatives, agents, or his surveyors, to investigate such details as the buyer desires validated. This vessel or yacht is offered subject to prior sale, price change, or withdrawal without notice.

PHOTOS

Salon-At



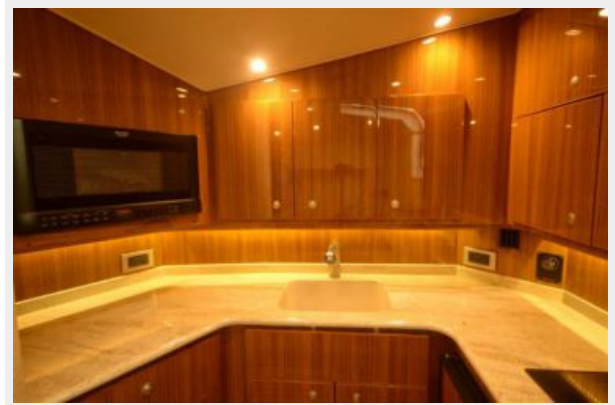
Salon/Dinette



Control Panel



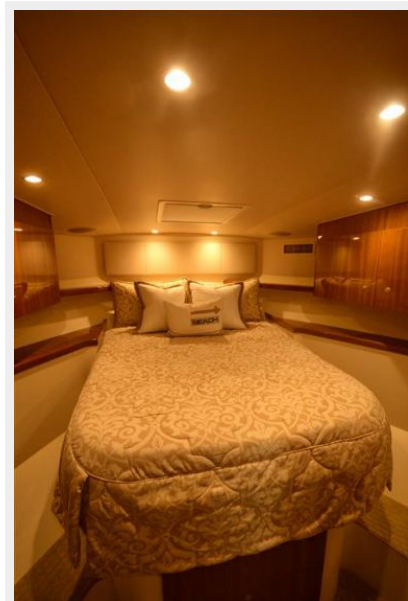
Galley



Galley



Master Stateroom



Master Stateroom



Head



VIP Stateroom



Helm



Helm Seating



Helm Seating



Command Bridge



Helm Station



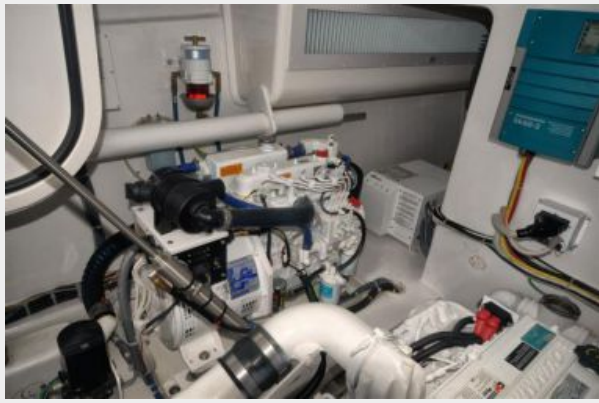
Engine Room



Engine Room



Engine Room



Engine Room



Miya Epoch Teaser



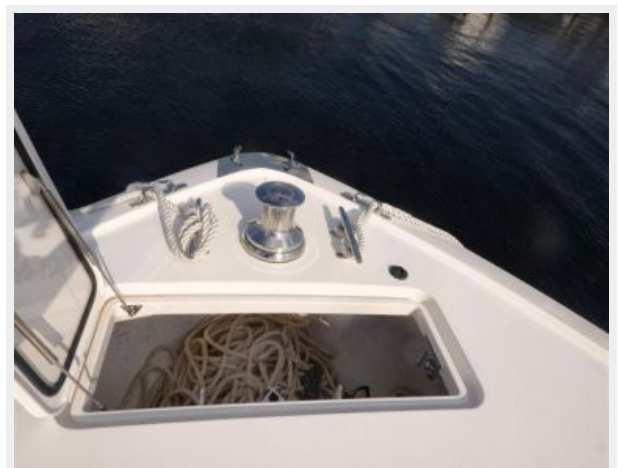
Hard Top



Molded Windshield



Anchor/Rode & Windlass



Tower Helm



Tower Fusion Remote



Tower Electronic Box



Rupp Outriggers



Cockpit



Release Launcher Marine



Fish Box



Tackle Storage



Palm Beach Tower



Tackle Storage



Transom Profile



CONTACTS

Andrey Shestakov, leading yacht broker of the sales department of Shestakov Yacht Sales Inc. Shestakov Yacht Sales Inc., the official representative of the Miami/Fort Lauderdale FL headquarters.

Contact details

Email: andrey@shestakovyachtsales.com

Web: shestakovyachtsales.com/en/

Telephones

USA: +1(954)274-4435

Office hours

Monday – Saturday: **9:00 - 21:00** EDT

Sunday: **closed**

Address



Harbour Towne Marina, 850 NE 3rd St,
STE 213, Dania, FL 33004