

THE GUSTO — SEA RAY



Builder: SEA RAY

Year Built: 2001

Model: Cruiser

Price: PRICE ON APPLICATION

Location: United States

LOA: 58' 0" (17.68m)

Beam: 15' 9" (4.80m)

Max Draft: 4' 1" (1.24m)

Our experienced yacht broker, Andrey Shestakov, will help you choose and buy a yacht that best suits your needs **The Gusto — SEA RAY** from our catalogue. Presently, at Shestakov Yacht Sales Inc., we have a wide variety of yachts available on our sale's list. We also work in close contact with all the big yacht manufacturers from all over the world.

If you would like to buy a yacht **The Gusto — SEA RAY** or would like help answering any questions concerning purchasing, selling or chartering a yacht, please call **+1(954)274-4435**

TABLE OF CONTENTS

TABLE OF CONTENTS	2
SPECIFICATIONS	4
Overview	4
Basic Information	4
Dimensions	4
Speed, Capacities and Weight	4
Accommodations	4
Hull and Deck Information	4
Engine Information	5
DETAILED INFORMATION	6
Salon	6
Galley	6
Master Stateroom	6
Master Head	7
Guest Stateroom	7
Guest Head	7
Electronics	7
Cockpit	8
Deck & Hull	8
Control Station	9
Electrical Equipment	9
Mechanical	9
Upgrades	10
Exclusions	10
Disclaimer	10
PHOTOS	11
CONTACTS	21
Contact details	21

Telephones	21
Office hours	21
Address	21

SPECIFICATIONS

Overview

Don't miss out on this well maintained 58' Sea Ray. The owner has had an open checkbook to care for and maintain her. This 58' is like no other in it's class.

Basic Information

Category: Cruiser

Sub Category: Sedan Cruiser

Model Year: 2002

Year Built: 2001

Country: United States

Dimensions

LOA: 58' 0" (17.68m)

Beam: 15' 9" (4.80m)

Max Draft: 4' 1" (1.24m)

Speed, Capacities and Weight

Displacement: 48000 Pounds

Water Capacity: 200 Gallons

Holding Tank: 68 Gallons

Fuel Capacity: 700 Gallons

Accommodations

Total Cabins: 2

Total Heads: 2

Hull and Deck Information

Hull Material: Fiberglass

Engine Information

Engines: 2

Manufacturer: Detroit Diesel

Model: MTU

Engine Type: Inboard

Fuel Type: Diesel

DETAILED INFORMATION

Salon

- Bar with Corian countertop, glass storage, bottle storage, utensil storage and indirect lighting
- Entertainment center w/ Bose stereo, 25" TV/VCR
- In-floor storage
- Washer/dryer combo
- Hi-lo dining/cocktail table, high-gloss wood
- Ultra-leather sofa with electrically operated slide-out bed
- Central vacuum system
- Hardwood floors

Galley

- Kenyon 3-burner stove w/stainless steel stove rail
- Trash receptacle w/chute and Corian cover
- Glass and dish storage
- Drawers w/cutlery inserts
- Upper and lower storage cabinets
- Spacemaker coffeemaker
- Microwave/convection oven
- Sub-Zero undercounter refrigerator
- Sub-Zero freezer w/icemaker
- Custom molded fiberglass countertop with Corian cutting board and sink w/single lever Grohe faucet

Master Stateroom

- Queen-size bed w/innerspring mattress and storage below with gas-assisted hatch
- Privacy door with mirror
- Cedar-lined hanging locker w/light
- Full length cedar-lined hanging locker with light and mirrored door
- TV/VCR/radio combo
- Vanity with Corian countertop, beveled mirrors, drawers and storage cabinet
- Sliding window with screen and curtains
- Port and Starboard storage cabinets
- (2) Bose speakers

Master Head

- Vanity w/solid surface countertop, solid surface sink w/Grohe faucet, mirrors and storage below
- Mirrored medicine cabinet
- Upper cabinet storage
- Power vent
- Vacuflush head
- Tile flooring
- Access from Master Stateroom
- Shower w/seat, adjustable shower wand and circular acrylic door

Guest Stateroom

- Queen-size bed w/innerspring mattress and storage below w/gas-assisted hatch
- Full length cedar-lined hanging locker w/light and mirrored door
- TV/VCR/radio combo
- Mirrored rope locker bulkhead
- Storage cabinet w/drawers below
- In-floor storage

Guest Head

- Vanity w/solid surface countertop, solid surface sink w/Grohe faucet, mirrors and storage below
- Mirrored medicine cabinet
- Shower w/seat, adjustable shower wand and circular acrylic door
- Power vent
- Mirror w/Corian trim
- Vacuflush head
- Tile flooring
- Access door from salon
- Upper cabinet storage

Electronics

- Garmin 3010c/7409 Plotter chart
- Garmin Sounder
- Simrad autopilot
- Simrad AP21 Remote autopilot
- Bow thruster / Stern thruster
- Intercom system
- KVH Tracvision 4

- Standard Horizon VHF
- RCL 100 Remote spotlight
- Clarion 6-disc CD stereo
- MTV Digital display
- Trim tabs
- Sea Ray systems monitor
- Sea fill suppression system

Cockpit

- Wet bar with sink, cooler, removable trash receptacle and storage, port
- Hi-lo cockpit table
- Side storage panels, port & stbd.
- Stereo AM/FM single CD w/6-disc CD changer, subwoofer, amplifier, (4) speakers and digital cockpit remote control
- Molded deck access steps
- Refrigerator
- Cable TV outlet
- Hardtop, fiberglass with stainless steel grab rails and overhead lighting w/electronic dimmer
- Freshwater washdown and dockside inlet w/cockpit shower, hot & cold
- U-shaped dinette seating
- Custom Euro-style helm seating w/flip-up thigh-rise bolster, armrests and heavy-duty pedestal w/slide, swivel and pneumatic vertical adjustment
- Euro-style companion bench seating
- Lockable cabin entry door
- Self-bailing cockpit & pivoting stainless steel engine room ladder
- U-Line icemaker
- Transom door
- 32" Toshiba Flatscreen TV

Deck & Hull

- Yamaha VX Jetski
- Navigation lights
- (4) Fixed portlights, stainless steel
- (6) Opening portlights, stainless steel
- Circular skylight in salon
- Fender storage, transom wall w/light
- Windlass w/foot switches
- Swim platform, extended w/concealed stainless steel ladder and grab handle
- Windshield, tempered/tinted curved glass w/stainless steel frame, electric front vent

- Hardtop enclosure
- T & T hi/low swim platform

Control Station

- Bilge temperature alarms
- High-water bilge alarms
- Bow thruster / Stern thruster
- Compass
- Emergency engine stop
- Dual hydraulic shift and throttle controls
- Tilt steering wheel
- Emergency start - engines

Electrical Equipment

- Battery charger/converter
- Battery charger overcurrent protection
- Battery equalizer, 50 amp (2)
- (2) Galvanic isolators
- Glendinning shore power cablemaster
- DC main breaker panel
- AC/DC main distribution panel
- 15kW Westerbeke diesel generator w/sound box, remote start w/muffler, freshwater cooling, fuel filter, seacock and seawater strainer

Mechanical

- Zone-controlled, reverse cycle split system A/C (30,000 BTU)
- (2) Bilge pumps
- (2) Bilge blowers
- Engine drip sumps
- Fire suppression system, automatic w/diesel shutdown, override and manual pull
- Water heater (new 2009)
- 200 gallon water tank
- Trim tabs, 24V hydraulic transom mounted, heavy duty dual rams w/pump
- Freshwater cooling
- Gel-coated engine room
- Removable stainless steel ladder
- Oil changer system, engines, transmissions and generator
- Engine synchronizer

- Racor fuel filters
- Freshwater hose and spigot, engine room
- Pressure water system w/dual 24V pumps
- 20KW Westerbeke generator

Upgrades

- 2 sets spare props
- Set of new shafts
- New electronics, Garmin package (2009)
- Bottom job (2012)
- New toilet pumps (2012)
- 4 man Switlik liferaft
- New Veem props

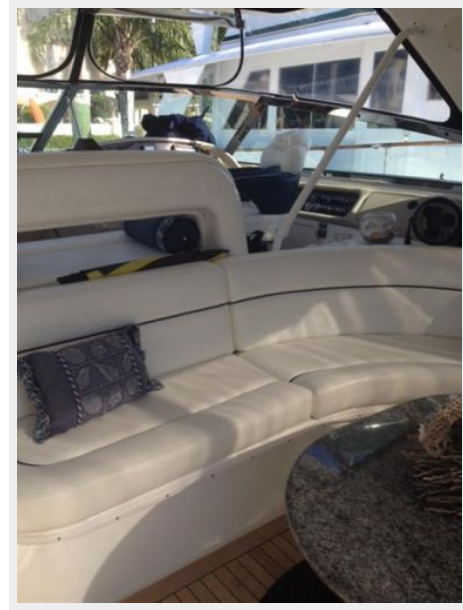
Exclusions

Owner's personal belongings.

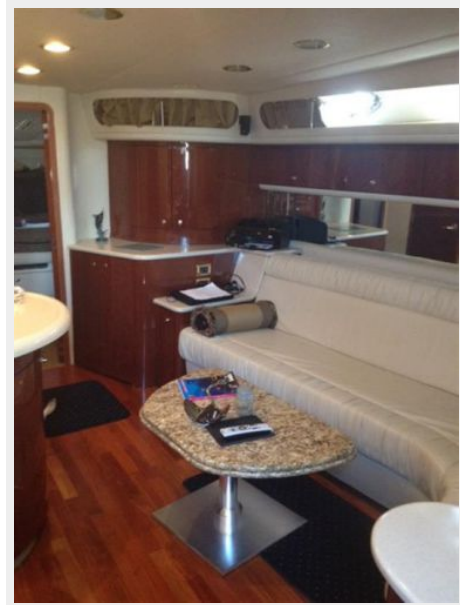
Disclaimer

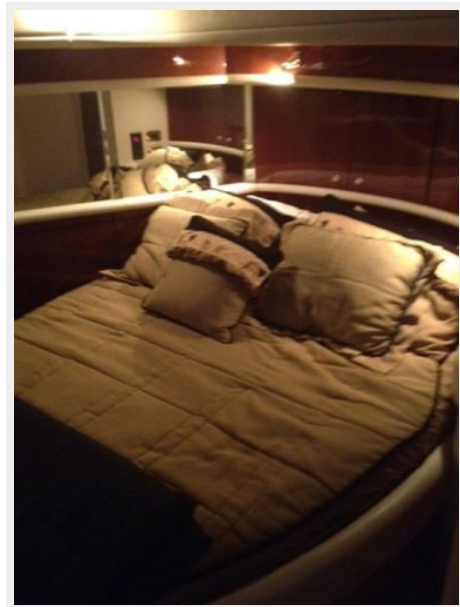
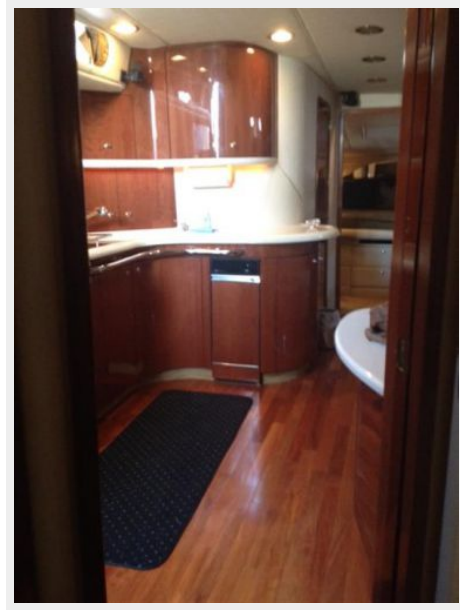
The Company offers the details of this vessel or yacht in good faith but cannot guarantee or warrant the accuracy of this information nor warrant the condition of the vessel. A buyer should instruct his representatives, agents, or his surveyors, to investigate such details as the buyer desires validated. This vessel or yacht is offered subject to prior sale, price change, or withdrawal without notice.

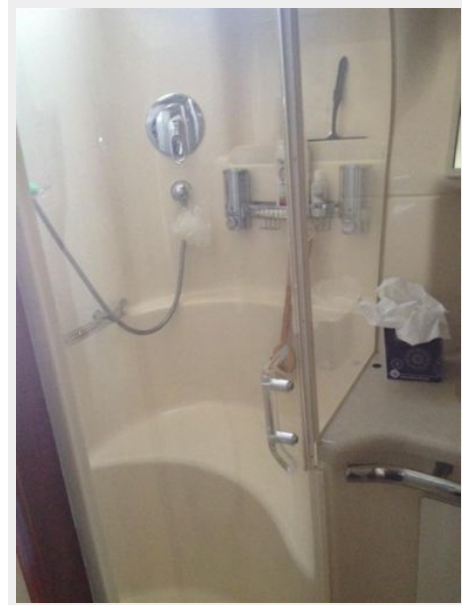
PHOTOS

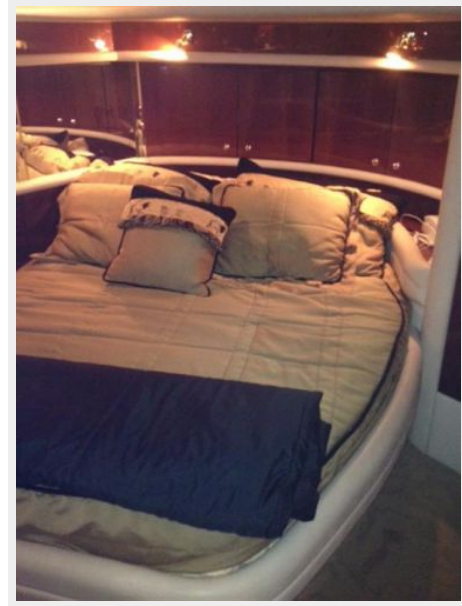
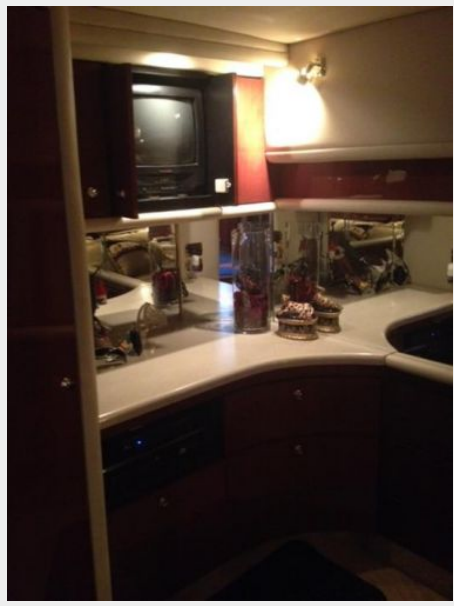


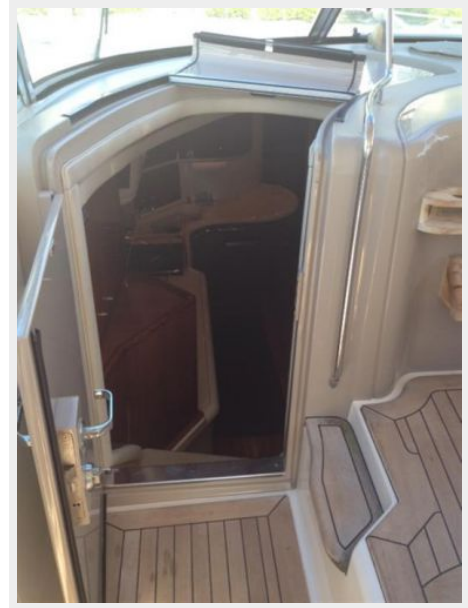






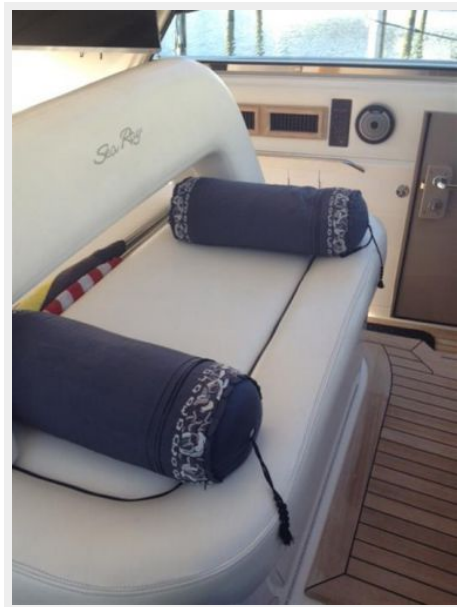
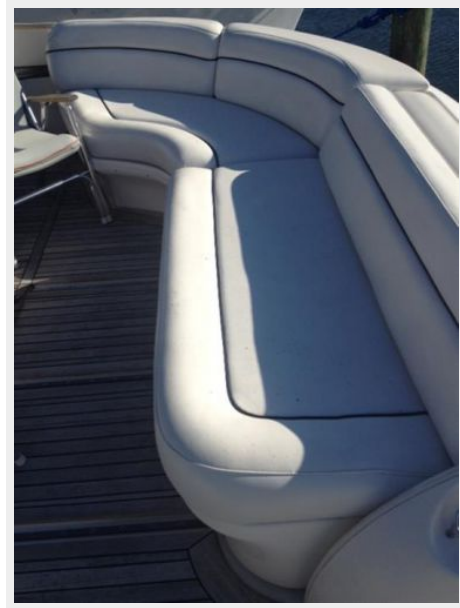












CONTACTS

Andrey Shestakov, leading yacht broker of the sales department of Shestakov Yacht Sales Inc. Shestakov Yacht Sales Inc., the official representative of the Miami/Fort Lauderdale FL headquarters.

Contact details

Email: andrey@shestakovyachtsales.com

Web: shestakovyachtsales.com/en/

Telephones

USA: +1(954)274-4435

Office hours

Monday – Saturday: **9:00 - 21:00** EDT

Sunday: **closed**

Address



Harbour Towne Marina, 850 NE 3rd St,
STE 213, Dania, FL 33004