

## "RX-TA-SEA" — JEANNEAU



**Builder:** JEANNEAU

**LOA:** 43' 11" (13.39m)

**Year Built:** 1989

**Beam:** 13' 11" (4.24m)

**Model:** Cruising Sailboat

**Price:** PRICE ON APPLICATION

**Location:** United States

Our experienced yacht broker, Andrey Shestakov, will help you choose and buy a yacht that best suits your needs "Rx-Ta-Sea" — JEANNEAU from our catalogue. Presently, at Shestakov Yacht Sales Inc., we have a wide variety of yachts available on our sale's list. We also work in close contact with all the big yacht manufacturers from all over the world.

If you would like to buy a yacht "Rx-Ta-Sea" — JEANNEAU or would like help answering any questions concerning purchasing, selling or chartering a yacht, please call +1(954)274-4435

---

# TABLE OF CONTENTS

---

TABLE OF CONTENTS	2
SPECIFICATIONS	3
Overview	3
Basic Information	4
Dimensions	4
Speed, Capacities and Weight	5
Accommodations	5
Hull and Deck Information	5
Engine Information	5
PHOTOS	6
CONTACTS	14
Contact details	14
Telephones	14
Office hours	14
Address	14

---

# SPECIFICATIONS

---

## Overview

---

PRICE REDUCED!

Whether you are looking for a live-aboard or a boat that is cruise ready "Rxtasea: is just the prescription for you. It is hard to find a boat of this size that is this well equipped and maintained for \$ 69,750.00. Come have a look at this unique and very livable cruising layout. **Electronics** Autopilot Radar Depthsounder - Forward Looking Plotter VHF GPS Compass **Rigging** Steering wheel **Inside Equipment** Oven - /Stove Refrigerator Microwave oven - /Convection Oven Heating Hot water Deep freezer Battery charger Air conditioning **Electrical Equipment** Generator - Northern Lights 4.5 KW **Outside Equipment/Extras** Cockpit cushions Cockpit table Solar panel Swimming ladder Wind generator Electric windlass

## Accommodations

The salon of this vessel is huge with a salon table surrounded by seating to port and the very well equipped galley to starboard. The chart table with seat is aft of the galley. The entrance to the aft cabin is to starboard. The aft cabin has a large double berth with abundant storage and a vanity facing forward. There is an entrance to the aft head from either the aft cabin or the salon. The aft head is nicely done with dual sinks and a separate stall shower. Going forward from the salon is the companionway to the forward cabin which has very nice size v-berth and storage all around. From the forward companionway to starboard is the head with sink and toilet and to port is what was the stall shower which has been converted into a machine, storage, and tool room.

## Covers

- Dodger
- Drop Down Sun Shade
- Spray and Mosquito netting
- Bimini
- Mainsail cover

## Sails and Rigging

- Roller Furling Headsail
- Lazy Jacks
- 1 Mainsail
- Boom Vang
- 4 Self Tailing Winches

- **Backstay Adjuster**
- **Traveler**
- **Bat Car System**

## Additional Information

- **New Bottom Paint and Cutlass Bearing Summer 2013**
- **Extensive Spares for cruising**
- **6 Person Viking Life Raft ( needs recertification )**
- **Aft Head has Electric Toilet with holding tank**
- **45# CQR Anchor with 150' chain, 100' rope**
- **5 Hours on Engine Rebuild**
- **Dodger**
- **Drop Down Sun Shade**
- **Spray and Mosquito Netting**
- **Swim Platform Shower**
- **Stainless Steel Arch with Block and Tackle for Dinghy**
- **Salon Table converts to a Double Berth**

**Disclaimer** The Company offers the details of this vessel in good faith but cannot guarantee or warrant the accuracy of this information nor warrant the condition of the vessel. A buyer should instruct his agents, or his surveyors, to investigate such details as the buyer desires validated. This vessel is offered subject to prior sale, price change, or withdrawal without notice.

## Basic Information

**Category:** Cruising Sailboat

**Model Year:** 1989

**Year Built:** 1989

**Country:** United States

**Vessel Top:** 2353

## Dimensions

**LOA:** 43' 11" (13.39m)

**LWL:** 34' 11" (10.64m)

**Beam:** 13' 11" (4.24m)

---

## Speed, Capacities and Weight

---

**Displacement:** 22050 Pounds

**Water Capacity:** 132 Gallons

**Fuel Capacity:** 58 Gallons

---

## Accommodations

---

**Total Cabins:** 2

**Total Berths:** 3

**Total Heads:** 2

---

## Hull and Deck Information

---

**Hull Material:** Fiberglass

---

## Engine Information

---

**Engines:** 1

**Manufacturer:** Perkins

**Model:** M50

**Engine Type:** Inboard

**Fuel Type:** Diesel

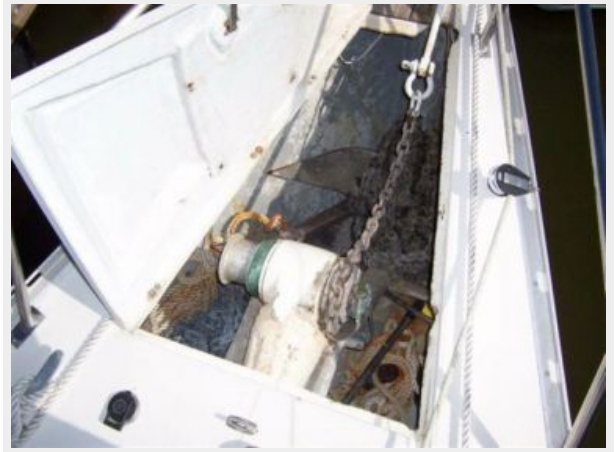
# PHOTOS



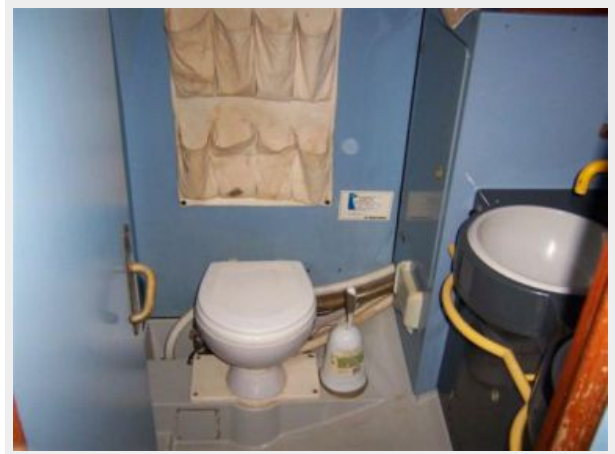


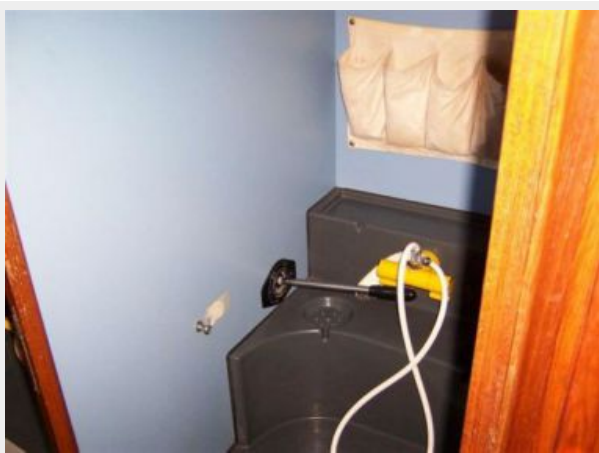














---

# CONTACTS

---

Andrey Shestakov, leading yacht broker of the sales department of Shestakov Yacht Sales Inc. Shestakov Yacht Sales Inc., the official representative of the Miami/Fort Lauderdale FL headquarters.

---

## Contact details

---

Email: **andrey@shestakovyachtsales.com**

Web: [shestakovyachtsales.com/en/](http://shestakovyachtsales.com/en/)

---

## Telephones

---

USA: +1(954)274-4435

---

## Office hours

---

Monday – Saturday: **9:00 - 21:00** EDT

Sunday: **closed**

---

## Address

---



Harbour Towne Marina, 850 NE 3rd St,  
STE 213, Dania, FL 33004