

## 48FT 2007 FOUNTAIN 48 EC — FOUNTAIN



**Builder:** FOUNTAIN

**Year Built:** 2007

**Model:** Cruiser

**Price:** PRICE ON APPLICATION

**Location:** United States

**LOA:** 48' 0" (14.63m)

**Beam:** 12' 0" (3.66m)

**Max Draft:** 3' 2" (0.97m)

**Cruise Speed:** 37.365978406 Kts. (43 MPH)

**Max Speed:** 56.48345573 Kts. (65 MPH)

Our experienced yacht broker, Andrey Shestakov, will help you choose and buy a yacht that best suits your needs 48ft 2007 Fountain 48 EC — FOUNTAIN from our catalogue. Presently, at Shestakov Yacht Sales Inc., we have a wide variety of yachts available on our sale's list. We also work in close contact with all the big yacht manufacturers from all over the world.

If you would like to buy a yacht 48ft 2007 Fountain 48 EC — FOUNTAIN or would like help answering any questions concerning purchasing, selling or chartering a yacht, please call +1(954)274-4435

# TABLE OF CONTENTS

TABLE OF CONTENTS	2
SPECIFICATIONS	5
Basic Information	5
Dimensions	5
Speed, Capacities and Weight	5
Accommodations	5
Hull and Deck Information	5
Engine Information	6
DETAILED INFORMATION	7
Key Features	7
Manufacturer Provided Description	7
Salon	7
Galley	7
Master Stateroom and Head	8
Aft Stateroom	8
Helm Console	8
COCKPIT	9
Mechanicals	9
Hull and Outfit	9
Brokers comments	10
Exclusions	10
Disclaimer	10
PHOTOS	11
Lift Kept	11
View of Bow	11
Foredeck	11
Metalic Black hull with Red Feature Stripe	11
Looking Aft	11

Hatch to Anchor Winch and Search light	11
Garmin Radar and TV Sat Dome	12
Helm Console	12
Helm Console	12
New Garmin electronics	12
Electric Helm seat	12
Lounge Seating	12
Lounge Seating	13
Fold down Drink holder	13
Sunpad	13
Sunpad	13
Sunpad Extended	13
Sunpad Extended	13
Ice Maker	14
Sunpad lifts for Storage under	14
Galley	14
Galley with full refrigerator	14
Microwave and Stainless sink	14
Wraparound lounge with table	14
Master Berth forward	15
Master Stateroom seating	15
Guest Stateroom aft with Privacy curtain	15
Master Valance	15
Looking forward to Master	16
Forward Head	16
Guest Head	16
Electrical Panel	16
Fusion AM/FM - DVD	17
Entertainment Center	17

---

CONTACTS	18
-----	-----
Contact details	18
-----	-----
Telephones	18
-----	-----
Office hours	18
-----	-----
Address	18
-----	-----

---

# SPECIFICATIONS

---

## Basic Information

---

**Category:** Cruiser

**Sub Category:** Express

**Model Year:** 2007

**Year Built:** 2007

**Country:** United States

## Dimensions

---

**LOA:** 48' 0" (14.63m)

**Beam:** 12' 0" (3.66m)

**Max Draft:** 3' 2" (0.97m)

**MFG Length:** 48' 6" (14.78m)

## Speed, Capacities and Weight

---

**Cruise Speed:** 37.365978406 Kts. (43 MPH) **Max Speed:** 56.48345573 Kts. (65 MPH)

**Displacement:** 25000 Pounds

**Water Capacity:** 80 Gallons

**Fuel Capacity:** 457 Gallons

## Accommodations

---

**Total Cabins:** 2

**Total Berths:** 2

**Total Heads:** 2

## Hull and Deck Information

---

**Hull Material:** Fiberglass

---

## Engine Information

---

**Engines:** 3

**Manufacturer:** Cummins

**Model:** QSB 5.9

**Engine Type:** Inboard

**Fuel Type:** Diesel

---

## DETAILED INFORMATION

---

### Key Features

---

*The cockpit on the 48' has plenty of room for entertaining and features a wet bar so no one has to travel for beverages. There's a large sun pad for taking in the rays, and a swim platform with retractable ladder for easy boarding. The 48 Express Cruiser features a spacious cabin with a wraparound lounge with entertainment center with TV/DVD. The galley is complete with refrigerator, two burner cooktop, microwave, and plenty of counter space and cabinets. Two private staterooms along with two heads complete this beauty.*

*The 48' Express Cruiser is the flagship of the Fountain fleet. She combines speed and luxury into a good-looking cruiser with a two stateroom, two head layout.*

### Manufacturer Provided Description

---

Powered by triple Cummins fuel-efficient diesels, the Fountain 48EC can cruise at an astonishing 50 mph while attaining 1.2 miles per gallon. Open up the throttles and take her up to 65 mph! And the 48EC's 12 foot beam provides the perfect combination of smooth ride and stable platform. Below the 48 provides you with the luxury that you would expect from a world class yacht. Like all Fountains, this classic was born of the brutal world of offshore racing. It means simply that this boat performs like a champ!

### Salon

---

- Teak and Holly flooring
- Air conditioning
- Wraparound sofa
- Denon stereo system w/DVD
- Flatscreen LCD TV
- Fusion AM/FM/CD with iPod connection
- Cherry cabinetry
- Table
- Electrical panel

### Galley

---

- Two burner electric cooktop
- Refrigerator/Freezer 12/120V

- Microwave oven
- Stainless steel sink
- Corian countertops
- Cherry cabinetry
- Fluorescent under cabinet lighting
- Ample drawer storage

---

## Master Stateroom and Head

---

- Queen size berth with comforter and pillows
- Air conditioning
- Cedar lined hanging locker
- Overhead lighting
- Cherry cabinetry
- Vacu-Flush toilet
- Shower
- Vanity with sink and mirror

---

## Aft Stateroom

---

- Double berth with comforter and pillows
- Privacy curtain
- Stereo system
- Cherry cabinetry
- Overhead lighting

---

## Helm Console

---

- Hydraulic steering with racing type wheel
- Glendinning electronic single lever engine controls
- Cummins Smart Craft panels (3)
- Livorsi instruments
- ACR searchlight control
- Side-Power bow thruster control
- Drive and Tab control switches and gauges
- Anchor winch control
- Ignition keys (3)
- Compass
- Systems switches
- (2) New Garmin 8215 Glass Touch Screens (2014)
- New Garmin radar (2014)



- New Garmin VHF radio (2014)
- New Garmin GHC10 autopilot (2014)
- Fireboy fire extinguishing control
- Fuel gauges
- Electric adjustable helm seat with flip up seat bottoms

---

## COCKPIT

---

- Wet bar with refrigerator
- Extensive couch style lounge seating
- Aft electric seat converts to sun pad extension
- Hard top with enclosure
- Wrap around windshield
- Air conditioning
- Large sun pad with Fountain logo
- Electric hatch below sun pad opens for storage
- Removable table stows below sun pad
- Stereo remote and speakers
- Teak decking
- Transom door
- Swim platform with swim ladder
- Access hatch to engine room
- Transom shower
- Shore power connections
- Rod holders

---

## Mechanicals

---

- Triple Cummins QSB 5.9 Diesels - (250 hours)
- Arneson ASD # 8 Surface drives
- Six blade racing props
- Onan 9KW Generator
- Stainless steel sea strainers
- Hydraulic Rocker plates (Trim flaps)
- Galvanic isolator
- Racor fuel/water separators with shut-off valves
- Intellian Sat TV receiver
- ACR Search light on bow with remote at helm
- Full ships electrical panel in salon

---

## Hull and Outfit

---

- Black metallic hull with red accents
- White topsides
- Stainless steel bow rails
- Stainless steel cleats
- (2) Hatches at foredeck
- Anchor winch with stainless anchor in chute and foot switches
- Fiberglass hardtop with new canvas enclosure
- Cockpit AC
- No bottom paint
- multi color under water lights (8)
- Storage locker in transom
- Stainless handrails at sides of hardtop
- Plexiglass hinged door to cabin
- Full canvas cover (entire boat)

---

## Brokers comments

---

***This 48EC has to be the nicest on the market! Owner has spent over \$50,000 in past 2 years updating the boat! All new Garmin electronics including (2) 8215 Glass touch screens interphased to new auto pilot and Intellian Sat TV. \$15,000 audio system installed with Fusion AM/FM/CD linked to 3 watt amplifier and multiple JBL speakers and sub woofer. All hydraulic hoses and fittings along with fuel lines have been replaced. (8) multi color under water lights installed. New canvas enclosure installed. And the boat has a full canvas cover. This boat is turn-key and better than new! Call to arrange a showing.....***

---

## Exclusions

---

Owner's personal belongings.

---

## Disclaimer

---

The Company offers the details of this vessel or yacht in good faith but cannot guarantee or warrant the accuracy of this information nor warrant the condition of the vessel. A buyer should instruct his representatives, agents, or his surveyors, to investigate such details as the buyer desires validated. This vessel or yacht is offered subject to prior sale, price change, or withdrawal without notice.

# PHOTOS

**Lift Kept**



**View of Bow**



**Foredeck**



**Metallic Black hull with Red Feature Stripe**



**Looking Aft**



**Hatch to Anchor Winch and Search light**



**Garmin Radar and TV Sat Dome**



**Helm Console**



**Helm Console**



**New Garmin electronics**



**Electric Helm seat**



**Lounge Seating**



**Lounge Seating**



**Fold down Drink holder**



**Sunpad**



**Sunpad**



**Sunpad Extended**



**Sunpad Extended**



**Sunpad lifts for Storage under**



**Ice Maker**



**Galley**



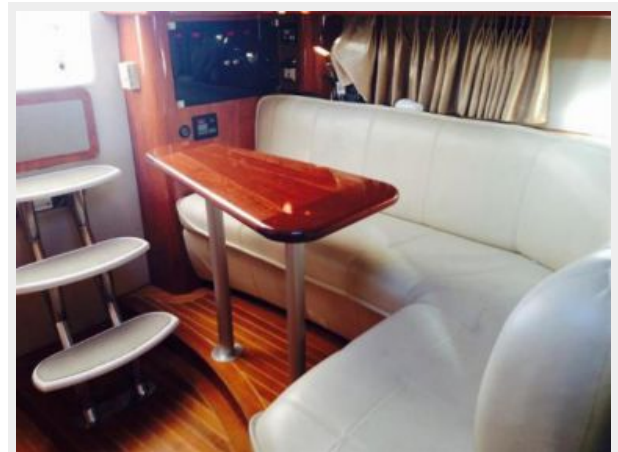
**Galley with full refrigerator**



**Microwave and Stainless sink**



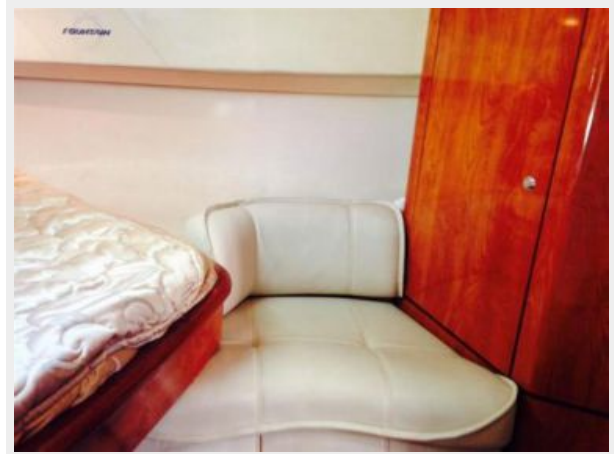
**Wraparound lounge with table**



**Master Berth forward**



**Master Stateroom seating**



**Guest Stateroom aft with Privacy curtain**



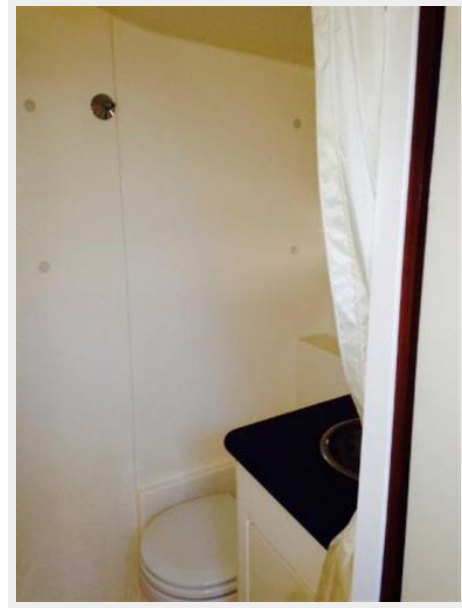
**Master Valance**



**Looking forward to Master**



**Forward Head**



**Guest Head**

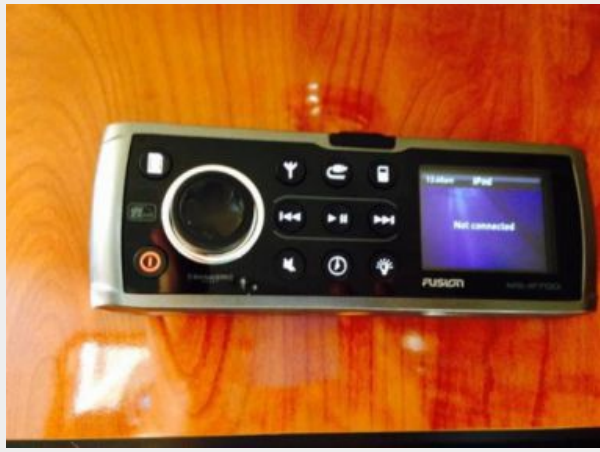


**Electrical Panel**





### Fusion AM/FM - DVD



### Entertainment Center



# CONTACTS

---

Andrey Shestakov, leading yacht broker of the sales department of Shestakov Yacht Sales Inc. Shestakov Yacht Sales Inc., the official representative of the Miami/Fort Lauderdale FL headquarters.

## Contact details

---

Email: [andrey@shestakovyachtsales.com](mailto:andrey@shestakovyachtsales.com)

Web: [shestakovyachtsales.com/en/](http://shestakovyachtsales.com/en/)

## Telephones

---

USA: +1(954)274-4435

## Office hours

---

Monday – Saturday: **9:00 - 21:00** EDT

Sunday: **closed**

## Address

---



Harbour Towne Marina, 850 NE 3rd St,  
STE 213, Dania, FL 33004