

48FT 2007 FOUNTAIN 48 EC — FOUNTAIN



Судостроитель: FOUNTAIN

Год постройки: 2007

Модель: Крейсер

Цена: ЦЕНА ЯХТЫ ПО ЗАПРОСУ

Местонахождение: United States

Длина общая: 48' 0" (14.63m)

Ширина: 12' 0" (3.66m)

Макс. осадка: 3' 2" (0.97m)

Крейс. скорость: 37.365978406 Kts. (43 MPH)

Макс. скорость: 56.48345573 Kts. (65 MPH)

Купить 48ft 2007 Fountain 48 EC — FOUNTAIN а также выбрать подходящую вам яхту из нашего каталога яхт вам поможет опытный яхтенный брокер Андрей Шестаков. На сегодняшний день компания Shestakov Yacht Sales Inc. имеет большое количество яхт в собственном списке продаж, а также тесно сотрудничает со всеми крупными яхтенными производителями по всему миру.

Для того чтобы купить яхту 48ft 2007 Fountain 48 EC — FOUNTAIN а также проконсультироваться по любому вопросу связанному с покупкой, продажей, чартером яхт позвоните по телефону **+7(918)465-66-44**.

ОГЛАВЛЕНИЕ

ОГЛАВЛЕНИЕ	2
ХАРАКТЕРИСТИКИ	5
Основная информация	5
Размеры	5
Скорость, вместимость и масса	5
Размещение	5
Корпус и палуба	5
Информация о двигателе	6
ПОДРОБНОЕ ОПИСАНИЕ	7
Key Features	7
Manufacturer Provided Description	7
Salon	7
Galley	7
Master Stateroom and Head	8
Aft Stateroom	8
Helm Console	8
СОСКРИТ	9
Mechanicals	9
Hull and Outfit	9
Brokers comments	10
Исключения	10
Отказ от ответственности	10
ФОТОГРАФИИ	11
Lift Kept	11
View of Bow	11
Foredeck	11
Metalic Black hull with Red Feature Stripe	11
Looking Aft	11

Hatch to Anchor Winch and Search light	11
Garmin Radar and TV Sat Dome	12
Helm Console	12
Helm Console	12
New Garmin electronics	12
Electric Helm seat	12
Lounge Seating	12
Lounge Seating	13
Fold down Drink holder	13
Sunpad	13
Sunpad	13
Sunpad Extended	13
Sunpad Extended	13
Ice Maker	14
Sunpad lifts for Storage under	14
Galley	14
Galley with full refrigerator	14
Microwave and Stainless sink	14
Wraparound lounge with table	14
Master Berth forward	15
Master Stateroom seating	15
Guest Stateroom aft with Privacy curtain	15
Master Valance	15
Looking forward to Master	16
Forward Head	16
Guest Head	16
Electrical Panel	16
Fusion AM/FM - DVD	17
Entertainment Center	17

КОНТАКТЫ	18
-----	-----
Контактная информация	18
-----	-----
Телефоны	18
-----	-----
Время работы	18
-----	-----
Адрес	18
-----	-----

ХАРАКТЕРИСТИКИ

Основная информация

Тип судна: Крейсер

Подкатегория: Express

Модельный год: 2007

Год постройки: 2007

Страна: United States

Размеры

Длина общая: 48' 0" (14.63m)

Ширина: 12' 0" (3.66m)

Макс. осадка: 3' 2" (0.97m)

Длина привального бруса: 48' 6"
(14.78m)

Скорость, вместимость и масса

Крейс. скорость: 37.365978406 Kts. (43
MPH)

Макс. скорость: 56.48345573 Kts. (65
MPH)

Водоизмещение: 25000 Pounds

Вместимость воды: 80 Gallons

Объем топливного бака: 457 Gallons

Размещение

Всего кают: 2

Всего коек: 2

Всего ком. состава: 2

Корпус и палуба

Материал корпуса: Fiberglass

Информация о двигателе

Двигатели: 3

Производитель: Cummins

Модель: QSB 5.9

Тип двигателя: Inboard

Тип топлива: Diesel

ПОДРОБНОЕ ОПИСАНИЕ

Key Features

The cockpit on the 48' has plenty of room for entertaining and features a wet bar so no one has to travel for beverages. There's a large sun pad for taking in the rays, and a swim platform with retractable ladder for easy boarding. The 48 Express Cruiser features a spacious cabin with a wraparound lounge with entertainment center with TV/DVD. The galley is complete with refrigerator, two burner cooktop, microwave, and plenty of counter space and cabinets. Two private staterooms along with two heads complete this beauty.

The 48' Express Cruiser is the flagship of the Fountain fleet. She combines speed and luxury into a good-looking cruiser with a two stateroom, two head layout.

Manufacturer Provided Description

Powered by triple Cummins fuel-efficient diesels, the Fountain 48EC can cruise at an astonishing 50 mph while attaining 1.2 miles per gallon. Open up the throttles and take her up to 65 mph! And the 48EC's 12 foot beam provides the perfect combination of smooth ride and stable platform. Below the 48 provides you with the luxury that you would expect from a world class yacht. Like all Fountains, this classic was born of the brutal world of offshore racing. It means simply that this boat performs like a champ!

Salon

- Teak and Holly flooring
- Air conditioning
- Wraparound sofa
- Denon stereo system w/DVD
- Flatscreen LCD TV
- Fusion AM/FM/CD with iPod connection
- Cherry cabinetry
- Table
- Electrical panel

Galley

- Two burner electric cooktop
- Refrigerator/Freezer 12/120V

- Microwave oven
- Stainless steel sink
- Corian countertops
- Cherry cabinetry
- Fluorescent under cabinet lighting
- Ample drawer storage

Master Stateroom and Head

- Queen size berth with comforter and pillows
- Air conditioning
- Cedar lined hanging locker
- Overhead lighting
- Cherry cabinetry
- Vacu-Flush toilet
- Shower
- Vanity with sink and mirror

Aft Stateroom

- Double berth with comforter and pillows
- Privacy curtain
- Stereo system
- Cherry cabinetry
- Overhead lighting

Helm Console

- Hydraulic steering with racing type wheel
- Glendinning electronic single lever engine controls
- Cummins Smart Craft panels (3)
- Livorsi instruments
- ACR searchlight control
- Side-Power bow thruster control
- Drive and Tab control switches and gauges
- Anchor winch control
- Ignition keys (3)
- Compass
- Systems switches
- (2) New Garmin 8215 Glass Touch Screens (2014)
- New Garmin radar (2014)

- New Garmin VHF radio (2014)
- New Garmin GHC10 autopilot (2014)
- Fireboy fire extinguishing control
- Fuel gauges
- Electric adjustable helm seat with flip up seat bottoms

COCKPIT

- Wet bar with refrigerator
- Extensive couch style lounge seating
- Aft electric seat converts to sun pad extension
- Hard top with enclosure
- Wrap around windshield
- Air conditioning
- Large sun pad with Fountain logo
- Electric hatch below sun pad opens for storage
- Removable table stows below sun pad
- Stereo remote and speakers
- Teak decking
- Transom door
- Swim platform with swim ladder
- Access hatch to engine room
- Transom shower
- Shore power connections
- Rod holders

Mechanicals

- Triple Cummins QSB 5.9 Diesels - (250 hours)
- Arneson ASD # 8 Surface drives
- Six blade racing props
- Onan 9KW Generator
- Stainless steel sea strainers
- Hydraulic Rocker plates (Trim flaps)
- Galvanic isolator
- Racor fuel/water separators with shut-off valves
- Intellian Sat TV receiver
- ACR Search light on bow with remote at helm
- Full ships electrical panel in salon

Hull and Outfit

- Black metallic hull with red accents
- White topsides
- Stainless steel bow rails
- Stainless steel cleats
- (2) Hatches at foredeck
- Anchor winch with stainless anchor in chute and foot switches
- Fiberglass hardtop with new canvas enclosure
- Cockpit AC
- No bottom paint
- multi color under water lights (8)
- Storage locker in transom
- Stainless handrails at sides of hardtop
- Plexiglass hinged door to cabin
- Full canvas cover (entire boat)

Brokers comments

This 48EC has to be the nicest on the market! Owner has spent over \$50,000 in past 2 years updating the boat! All new Garmin electronics including (2) 8215 Glass touch screens interphased to new auto pilot and Intellian Sat TV. \$15,000 audio system installed with Fusion AM/FM/CD linked to 3 watt amplifier and multiple JBL speakers and sub woofer. All hydraulic hoses and fittings along with fuel lines have been replaced. (8) multi color under water lights installed. New canvas enclosure installed. And the boat has a full canvas cover. This boat is turn-key and better than new! Call to arrange a showing.....

Исключения

При продаже яхты исключаются личные вещи владельца.

Отказ от ответственности

Компания предоставляет описание судна или яхты добросовестно, но не может гарантировать точность этой информации, а также не ручается за техническое состояние. Покупатель должен проинструктировать своих агентов или оценщиков исследовать представленную информацию более подробно, по собственному желанию. Продажа судна или яхты, изменение цены или снятие с продажи будет происходить без предварительного уведомления.

ФОТОГРАФИИ

Lift Kept



View of Bow



Foredeck



Metallic Black hull with Red Feature Stripe



Looking Aft



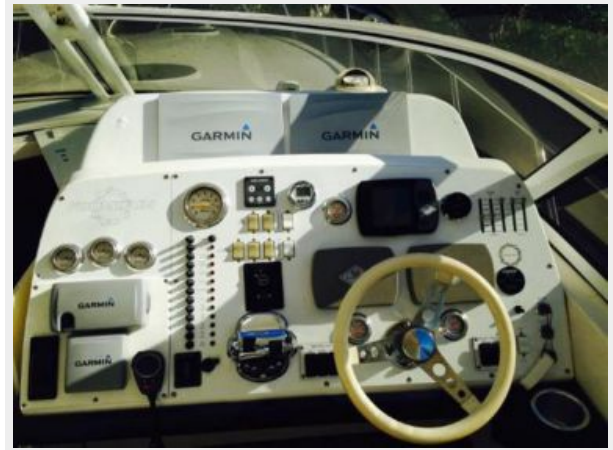
Hatch to Anchor Winch and Search light



Garmin Radar and TV Sat Dome



Helm Console



Helm Console



New Garmin electronics



Electric Helm seat



Lounge Seating



Lounge Seating



Fold down Drink holder



Sunpad



Sunpad



Sunpad Extended



Sunpad Extended



Sunpad lifts for Storage under



Ice Maker



Galley



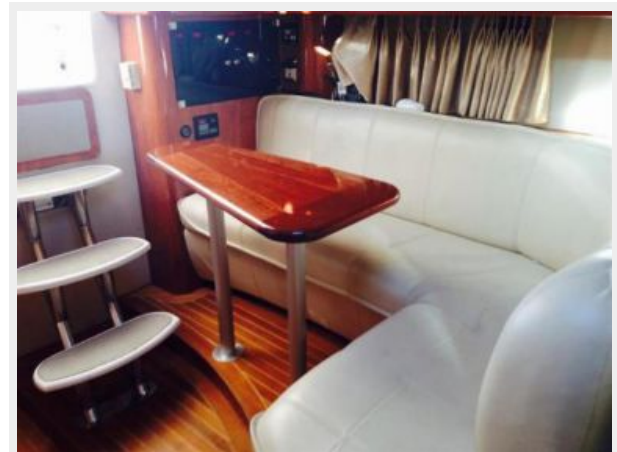
Galley with full refrigerator



Microwave and Stainless sink



Wraparound lounge with table



Master Berth forward



Master Stateroom seating



Guest Stateroom aft with Privacy curtain



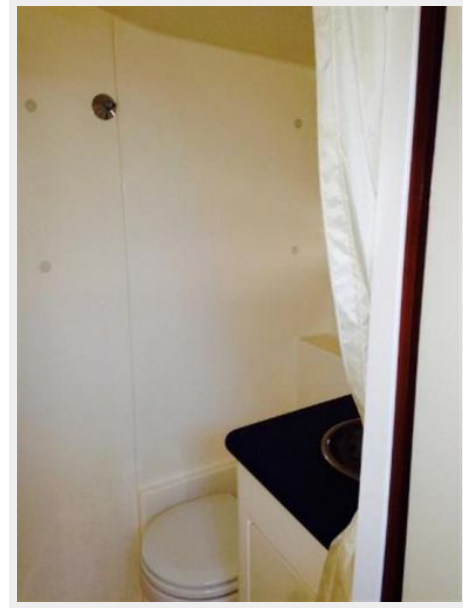
Master Valance



Looking forward to Master



Forward Head



Guest Head



Electrical Panel



Fusion AM/FM - DVD



Entertainment Center



КОНТАКТЫ

Андрей Шестаков (Andrey Shestakov) – ведущий яхтенный брокер отдела продаж яхт и судов компании Shestakov Yacht Sales Inc. Официальный представитель Shestakov Yacht Sales Inc. для русскоговорящих клиентов в центральном офисе компании в Майами/Форт Лодердейл/Флорида/США.

Контактная информация

Email: andrey@shestakovyachtsales.com

Web: shestakovyachtsales.com

Телефоны

Краснодарский край: **+7(918)465-66-44**

США, Майами, Флорида: **+1(954)274-4435**

Время работы

Понедельник – Суббота: **9:00 - 21:00**
EDT

Воскресенье: **Закрето**

Адрес



Harbour Towne Marina, 850 NE 3rd St,
STE 213, Dania, FL 33004