

47FT 2008 TIARA 4700 SOVRAN — TIARA



Builder: TIARA

Year Built: 2008

Model: Motor Yacht

Price: PRICE ON APPLICATION

Location: Puerto Rico

LOA: 47' 0" (14.33m)

Beam: 14' 6" (4.42m)

Max Draft: 4' 5" (1.35m)

Our experienced yacht broker, Andrey Shestakov, will help you choose and buy a yacht that best suits your needs 47ft 2008 Tiara 4700 Sovran — TIARA from our catalogue. Presently, at Shestakov Yacht Sales Inc., we have a wide variety of yachts available on our sale's list. We also work in close contact with all the big yacht manufacturers from all over the world.

If you would like to buy a yacht 47ft 2008 Tiara 4700 Sovran — TIARA or would like help answering any questions concerning purchasing, selling or chartering a yacht, please call +1(954)274-4435

TABLE OF CONTENTS

TABLE OF CONTENTS	2
SPECIFICATIONS	3
Basic Information	3
Dimensions	3
Speed, Capacities and Weight	3
Accommodations	3
Hull and Deck Information	3
Engine Information	3
DETAILED INFORMATION	4
Split Hull Design	4
Portside Lounger	4
Refreshment Center	4
At the Helm	4
CABIN FEATURES	4
Well Equipped Galley	5
Master Stateroom	5
Performance & Handling	5
Exclusions	5
Disclaimer	5
PHOTOS	6
CONTACTS	26
Contact details	26
Telephones	26
Office hours	26
Address	26

SPECIFICATIONS

Basic Information

Category: Motor Yacht

Model Year: 2008

Year Built: 2008

Country: Puerto Rico

Dimensions

LOA: 47' 0" (14.33m)

Beam: 14' 6" (4.42m)

Max Draft: 4' 5" (1.35m)

MFG Length: 50' 4" (15.34m)

Speed, Capacities and Weight

Displacement: 33150 Pounds

Water Capacity: 150 Gallons

Holding Tank: 50 Gallons

Fuel Capacity: 525 Gallons

Accommodations

Total Berths: 6

Total Heads: 2

Hull and Deck Information

Hull Material: Fiberglass

Engine Information

Engines: 2

Manufacturer: Cummins

Model: QSM-11

Engine Type: Inboard

Fuel Type: Diesel

DETAILED INFORMATION

Split Hull Design

By utilizing a split hull mold Tiara is able to create this hull which works in the opposite manner that a “Carolina Flair” hull works by actually pushing the water away from the boat and creating a v.

Portside Lounger

The upper cockpit has a molded-in lounge on the portside and a removable teak table that adds versatility to the space.

Refreshment Center

A wet bar is fitted aft of the helm chair and features refrigerator, storage, cutting surface, and sink.

At the Helm

This 4700 features the options that includes teak floor and teak accents throughout the cockpit, and wood blinds in the interior. The upper cockpit has a molded-in lounge on the portside and a removable teak table that adds versatility to the space. The huge helm is located to starboard with a Furuno GPS/Radar Package, Garmin GPS Backup, Simrad Autopilot, Icom VHF Radio and Clarion Stereo with JL Audio Speakers. Also here, is a big double-wide Stidd® helm chair that is completely adjustable fore and aft, as well as up and down. This megayacht caliber helm chair provides serious traveling comfort. A wet bar is fitted aft of the helm chair and features refrigerator, storage, cutting surface, and sink.

CABIN FEATURES

Entering to the cabin through a centerline smoked acrylic door. The Cabin featured the standard rich teak wood and teak solid wood floors. At the base of the steps to the port is the galley. Here you will find a side-by-side Sub Zero® refrigerator and freezer, Corian® countertops, a convection/microwave oven and two burner cooktop recessed with Corian® covers. Forward of the galley is a large dinette with room for 4-5 adults to easily sit for dinner. A pair of nicely upholstered barrel chairs are adjacent the dinette as well as the large flat panel television. The entire boat is wired with a Bose® Lifestyle entertainment system for theatre quality sound. The guest stateroom features upper and lower bunks and here you will find a fair amount of room to move around. The day head is accessed through the stateroom and features a Vacuflush toilet. The sink is located in the stateroom and there is a flush mounted flat panel television in there as well. Moving all the way forward you will find the master stateroom which is quite large and

features a queen sized berth with inner spring mattress, a pair of cedar-lined hanging lockers, and lots of storage for other necessities. The private master head has a beautiful Corian® inlaid floor and a big fiberglass shower stall.

Well Equipped Galley

The galley features a side-by-side Sub Zero® refrigerator and freezer, Corian® countertops, a convection/microwave oven and two burner cooktop recessed with Corian® covers.

Master Stateroom

The master stateroom is quite large and features a queen sized berth with inner spring mattress, a pair of cedar-lined hanging lockers, and lots of storage for other necessities.

Performance & Handling

This 4700 Sovran hull is extremely solid. It has an effortless and heavy ride.

Exclusions

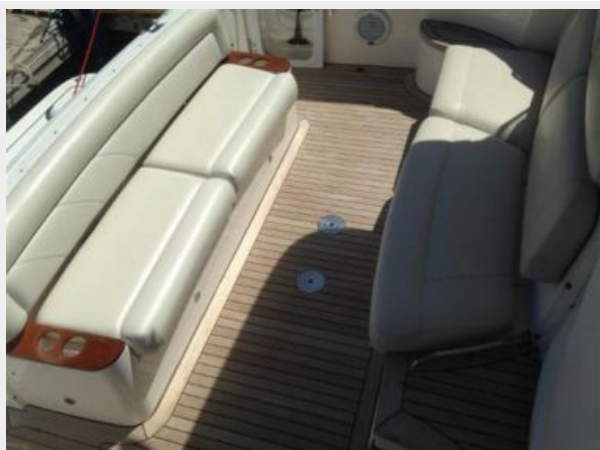
Owner's personal belongings.

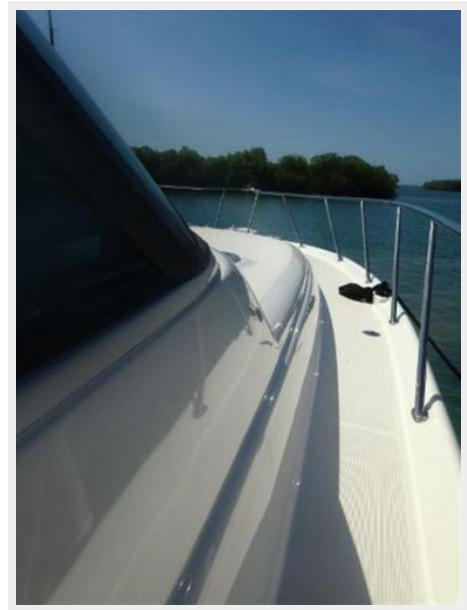
Disclaimer

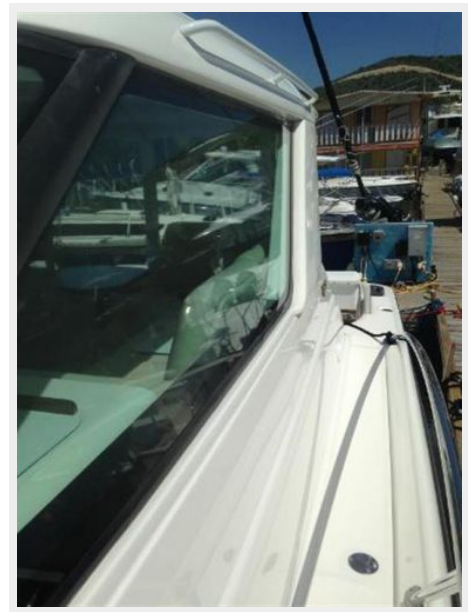
The Company offers the details of this vessel or yacht in good faith but cannot guarantee or warrant the accuracy of this information nor warrant the condition of the vessel. A buyer should instruct his representatives, agents, or his surveyors, to investigate such details as the buyer desires validated. This vessel or yacht is offered subject to prior sale, price change, or withdrawal without notice.

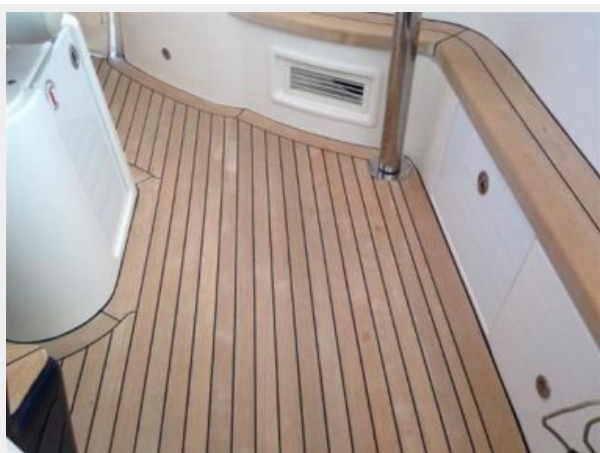
PHOTOS







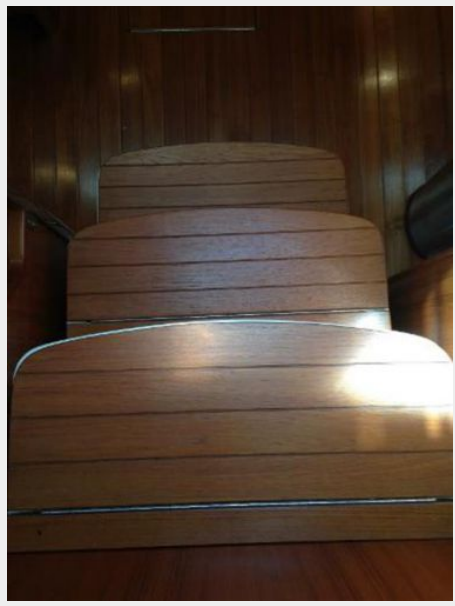






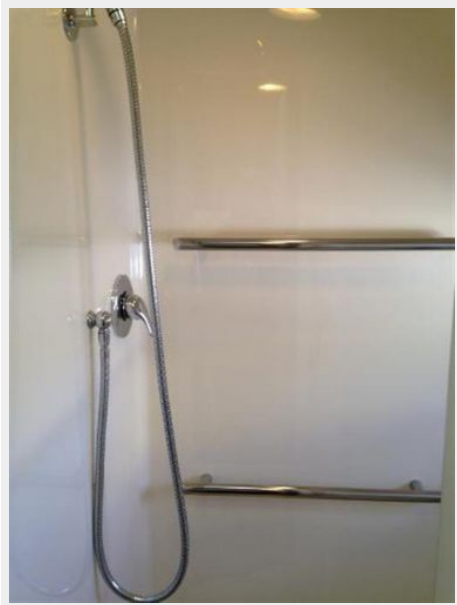


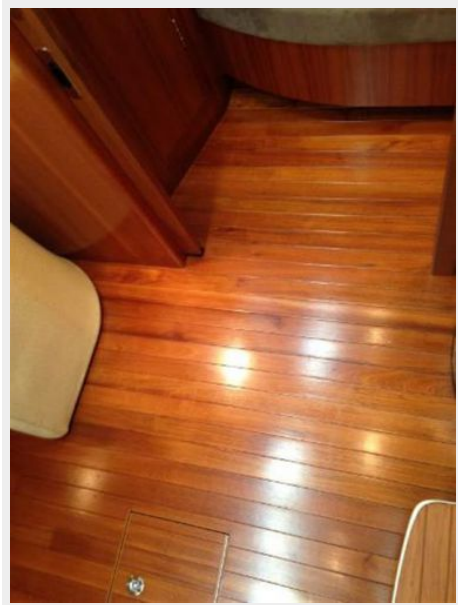
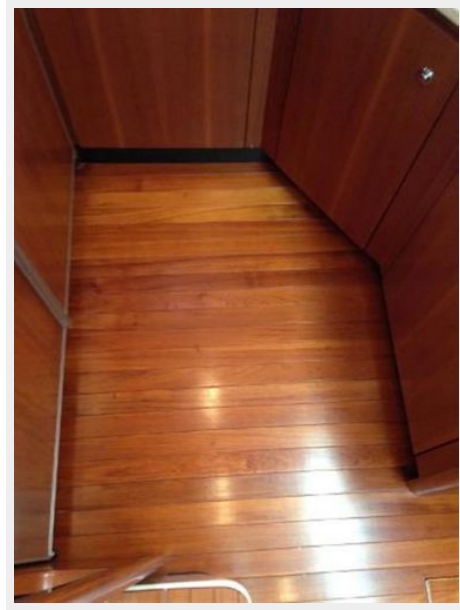


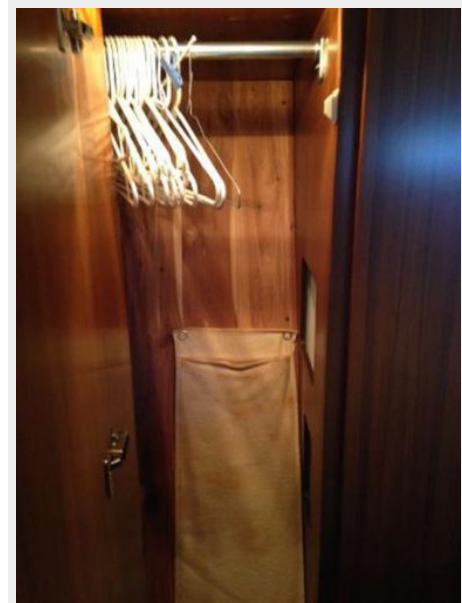


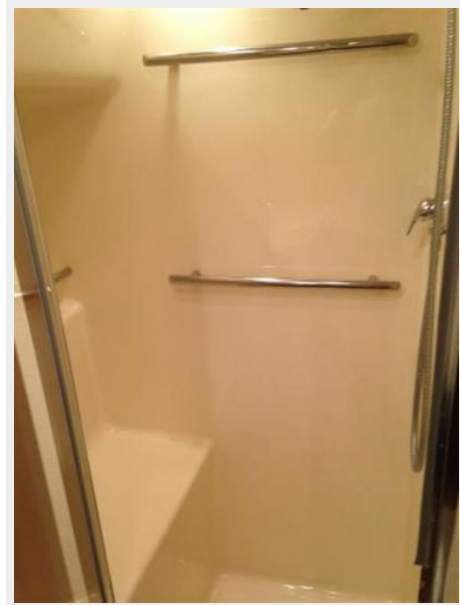






















CONTACTS

Andrey Shestakov, leading yacht broker of the sales department of Shestakov Yacht Sales Inc. Shestakov Yacht Sales Inc., the official representative of the Miami/Fort Lauderdale FL headquarters.

Contact details

Email: andrey@shestakovyachtsales.com

Web: shestakovyachtsales.com/en/

Telephones

USA: +1(954)274-4435

Office hours

Monday – Saturday: **9:00 - 21:00** EDT

Sunday: **closed**

Address



Harbour Towne Marina, 850 NE 3rd St,
STE 213, Dania, FL 33004