

43FT 2008 SILVERTON 43 SPORT BRIDGE — SILVERTON



Builder: SILVERTON

Year Built: 2008

Model: Motor Yacht

Price: PRICE ON APPLICATION

Location: United States

LOA: 43' 0" (13.11m)

Beam: 14' 4" (4.37m)

Max Draft: 3' 10" (1.17m)

Our experienced yacht broker, Andrey Shestakov, will help you choose and buy a yacht that best suits your needs 43ft 2008 Silverton 43 Sport Bridge — SILVERTON from our catalogue. Presently, at Shestakov Yacht Sales Inc., we have a wide variety of yachts available on our sale's list. We also work in close contact with all the big yacht manufacturers from all over the world.

If you would like to buy a yacht 43ft 2008 Silverton 43 Sport Bridge — SILVERTON or would like help answering any questions concerning purchasing, selling or chartering a yacht, please call **+1(954)274-4435**

TABLE OF CONTENTS

TABLE OF CONTENTS	2
SPECIFICATIONS	5
Basic Information	5
Dimensions	5
Speed, Capacities and Weight	5
Accommodations	5
Hull and Deck Information	5
Engine Information	6
DETAILED INFORMATION	7
Manufacturer Provided Description	7
Stereo System	7
Auto Pilot Unit	7
Electronics	7
Additional Information	8
Entertainment System	8
Interior Amenties	8
Mechanical @ Electrical	8
Exclusions	8
Disclaimer	9
PHOTOS	10
Side View	10
Starboard View	10
Front View	10
Port View	10
Front Side View	10
Master Stateroom	10
Dinette Seating Area	11
Galley Dinette Seating Area	11

Guest State Room	11
Master State Room	11
Master looking at the Closet	11
Galley Dinette Seating area	11
Master Head	12
Galley couch	12
Galley Area looking forward At The Dinette Seating Area	12
Dinette Area	12
Galley Area looking Forward	12
Galley Dinette Area	12
Master Bath Room	13
Breaker Panel	13
Dinette Seating Area	13
Aft Deck Area	13
Looking Down At the fuel Tanks Bilge Area	13
Generator Holding Tank	13
Batteries/Bilge Area	14
Bilge Area Batteries	14
Rear Deck Area	14
Fuel Tank Area Shut Off Valves	14
Stair well Area going to the upper Deck Area	15
Looking into the Bilge At The Motors	15
Stairs Going into The Bilge Area	15
Volvo Motor Packages	15
Looking Into The Bilge Area At The Motors	15
Volvo Penta IPS	15
Upper Deck Dash Panel	16
Upper Deck Dash Panel	16
Engine Monitor Gauges	16

The Other Monitor Gauge	16
Both Gauges And The Auto pilot	16
Upper Deck Seating And The Sink Area	16
More Upper Deck Seating Area	17
CONTACTS	18
Contact details	18
Telephones	18
Office hours	18
Address	18

SPECIFICATIONS

Basic Information

Category: Motor Yacht

Model Year: 2008

Year Built: 2008

Country: United States

Dimensions

LOA: 43' 0" (13.11m)

Beam: 14' 4" (4.37m)

Max Draft: 3' 10" (1.17m)

Clearance: 14' 5" (4.39m)

Speed, Capacities and Weight

Displacement: 28000 Pounds

Water Capacity: 118 Gallons

Holding Tank: 50 Gallons

Fuel Capacity: 430 Gallons

Accommodations

Total Cabins: 2

Total Berths: 9

Total Heads: 2

Hull and Deck Information

Hull Material: Fiberglass

Engine Information

Engines: 2

Manufacturer: Volvo Penta

Model: 500 IPS T-D-6

Engine Type: Inboard

Fuel Type: Diesel

DETAILED INFORMATION

Manufacturer Provided Description

The 43 Sport Bridge has the power, in her standard twin 8.1-L Crusader (or optional diesel) engines, to realize the ambitions of the most ardent cruiser. The 43 Sport Bridge features amenities appreciated by as many as six travelers who call her home during an extended on-water stay. The main-deck cabin boasts an immense salon with convertible sofa, loveseat, and sophisticated entertainment center; a superbly equipped galley; and separate dinette area. Cherry wood is featured throughout the 43 Sport Bridge in joinery, doors, and bulkheads ? in high-gloss and satin finishes. An elegant master stateroom with private head and stall shower lies well forward. A second head (wet) with stall shower serves the salon and guest stateroom to starboard. As with all our Sport Bridge models, the 43 Sport Bridge features a big cockpit that is an entertainment plus. One of the largest in its class, the flybridge possesses a standard wetbar with optional refrigerator/ icemaker and Silvertons unique SideWalk passage to the bow.

Stereo System

- Kenwood Stereo
- 1 Kenwood Remote
- 2 Amplifiers
- 1 Subwoofer
- 5 Speakers
- 1 Amp Kit
- 1 Ipod Cradle

Auto Pilot Unit

- Ray Marine Auto pilot
- ST 8002 Control Head
- Smart Pilot

Electronics

- Ray Marine E 120 Connected to the Volvo Diesels
- 4 kW Open Array
- Seaview Dual Mount
- ST 5 Way Junction Box
- Bronze Thru Hull Transducer
- Seataalk Network Switch

- Tracvision With Dockside Capability
- Sec 200C Forward Shooting Sonar
- Raymarine 215 VHF
- 3 Raymarine Cam 50 Cameras

Additional Information

- Air Conditioning System Is a 40K BTU
- 3 Zones 10K,12K,18K
- Ice Maker in The Cockpit Are
- Refrigerator On The Bridge Area
- Central Vac System

Entertainment System

- 1 15 inch Flat Screen T/V Master Stateroom
- 1 15 inch Flat Screen T/V Second Stateroom
- Am/Fm Sgl CD StereoW/Power Sub @ Amp Flybridge
- Bose 3.2.1 Salon

Interior Amenties

- Amtico Flooring Companion Way@Fwd STRM
- Interior Upgrade Includes Cocoa Brown Corian Countertops Interior.
- Linen Package
- Ultra Leather Dinette @ Sofa

Mechanical @ Electrical

- Electronic Controls
- Interior Lighting group
- Spotlight-Remote
- Water Heater 20 Gal
- Windless Maxwell Freedom With 300' of Chain

Exclusions

Owner's personal belongings.

Disclaimer

The Company offers the details of this vessel or yacht in good faith but cannot guarantee or warrant the accuracy of this information nor warrant the condition of the vessel. A buyer should instruct his representatives, agents, or his surveyors, to investigate such details as the buyer desires validated. This vessel or yacht is offered subject to prior sale, price change, or withdrawal without notice.

PHOTOS

Side View



Starboard View



Front View



Port View



Front Side View



Master Stateroom



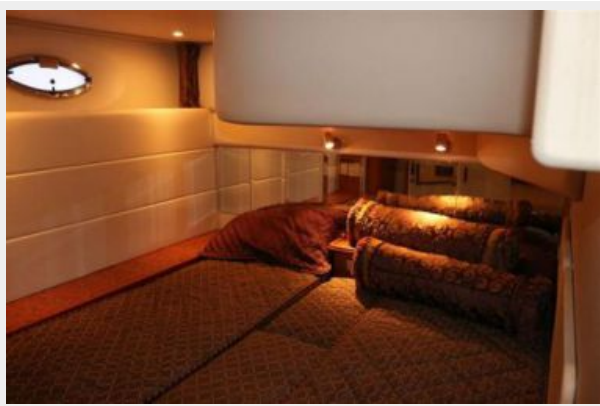
Dinette Seating Area



Galley Dinette Seating Area



Guest State Room



Master State Room



Master looking at the Closet



Galley Dinette Seating area



Master Head



Galley couch



Dinette Area



Galley Area looking forward At The Dinette Seating Area



Galley Area looking Forward



Galley Dinette Area



Master Bath Room



Breaker Panel



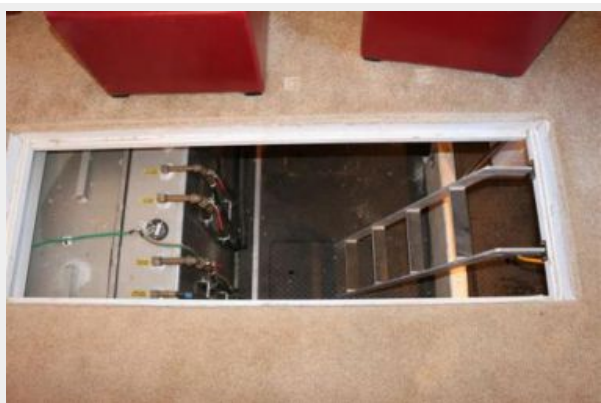
Dinette Seating Area



Aft Deck Area



Looking Down At the fuel Tanks Bilge Area



Generator Holding Tank



Batteries/Bilge Area



Bilge Area Batteries



Fuel Tank Area Shut Off Valves



Rear Deck Area



Stair well Area going to the upper Deck Area



Looking into the Bilge At The Motors



Stairs Going into The Bilge Area



Volvo Motor Packages



Looking Into The Bilge Area At The Motors



Volvo Penta IPS



Upper Deck Dash Panel



Upper Deck Dash Panel



Engine Monitor Gauges



The Other Monitor Gauge



Both Gauges And The Auto pilot



Upper Deck Seating And The Sink Area



More Upper Deck Seating Area



CONTACTS

Andrey Shestakov, leading yacht broker of the sales department of Shestakov Yacht Sales Inc. Shestakov Yacht Sales Inc., the official representative of the Miami/Fort Lauderdale FL headquarters.

Contact details

Email: andrey@shestakovyachtsales.com

Web: shestakovyachtsales.com/en/

Telephones

USA: +1(954)274-4435

Office hours

Monday – Saturday: **9:00 - 21:00** EDT

Sunday: **closed**

Address



Harbour Towne Marina, 850 NE 3rd St,
STE 213, Dania, FL 33004