

BLACK PEARL — BERTRAM



Builder: BERTRAM

LOA: 31' (9.45mm)

Year Built: 1962

Max Draft: 3' 1" (0.94mm)

Model: Sport Fisherman

Price: PRICE ON APPLICATION

Location: United States

Our experienced yacht broker, Andrey Shestakov, will help you choose and buy a yacht that best suits your needs **Black Pearl — BERTRAM** from our catalogue. Presently, at Shestakov Yacht Sales Inc., we have a wide variety of yachts available on our sale's list. We also work in close contact with all the big yacht manufacturers from all over the world.

If you would like to buy a yacht **Black Pearl — BERTRAM** or would like help answering any questions concerning purchasing, selling or chartering a yacht, please call **+1(954)274-4435**

TABLE OF CONTENTS

TABLE OF CONTENTS	2
SPECIFICATIONS	3
Overview	3
Basic Information	4
Dimensions	4
Speed, Capacities and Weight	4
Accommodations	4
Hull and Deck Information	5
Engine Information	5
PHOTOS	6
CONTACTS	11
Contact details	11
Telephones	11
Office hours	11
Address	11

SPECIFICATIONS

Overview

Fully restored by Hunter Scott in 1992 to a high level of finish. Twin cummins diesels, three steering stations, she is ready to travel to the canyon, fish all day and return the crew in comfort regardless of conditions. Her gleaming black awl grip with matching signature upholstery and canvas turns heads in any harbor. Entertain on Sundays with galley up and large back porch. A perfect combination for our time constrained lives. A rare opportunity to acquire a fine example of Ray Hunt's iconic design. **Accommodations**

Starting at the bow the forward cabin is lined in teak with shelves outboard, rod holders in overhead, reading lamps, A/C control, barometer, electric distribution panel, fans, marine toilet under a V-Berth, hanging locker to port, glasses cabinet opposite. Large opening hatch. White forward bulkhead with anchor locker access, Teak aft bulkhead.

Bridge deck has steering station to starboard followed by galley with refrigerator under, stb sink, H/C pressure water, microwave, storage and counter space. Opposite to port is teak table with fore and aft facing settees, storage outboard, behind and under. Entire cabin is surrounded by fixed windows with two forward opening windows, satin teak and holly sole, teak aft bulkhead with smoked gray ports, teak door with screen insert.

Cockpit engine cowls with cushions, teak and holly deck, opening FG cabinets under gunwales with shelves and rod holders. Raw water and fresh water washdowns, access to steering mechanism, storage, white vinyl bolster with black signature. Rod holders, stb chocks and cleats set in side deck and teak capped gunwale. On starboard is a third set of engine controls with throttle and steering remote. Excellent for backing down in the rips without extra crew.

Bridgedeck is equipped with steering station, storage under, dual helmsman seat in teak with storage under, rocket launcher, and aluminum tower with black canvas bimini.

Upper steering station

Furuno Nav Net C map NTGPS Micro control throttles Simrad AP 11 autopilot Cummins VDO gauges and Tach for each engine Windlass controls Bow Thruster controls Standard Horizon VHF Compass Dual Speakers Custom tower with dual ladders Bimini top 6 Pack rocket launchers Custom teak dual helmsman seat with cushions

Deck

Teak bowsprit Anchor and rode Electric windlass Chrome sampson post STS Bow pulpit with fender holders Large opening Hatch

Lower steering station

Furano Navnet Cmap NT GPSDual micro controller throttlesSimrad AP 11 auto pilotStandard horizon VHFCummins VDO guages and TachsMermaid Marine A/C Single teak helmsman seat on chest of drawersTwo opening forward windows

Upgrades

1992Renowned builder Hunter Scott of Pocasset MA.Performed a total restoration including but not limited toRepowered with Cummins Dieselsand Reverso oil change systeminstalled air-conditioning,custom interior outfitting New Aluminum fuel tanks3 steering stations

2005Tower with BiminiBow ThrusterOversized rudders fitted by Guy Cridell

Basic Information

Category: Sport Fisherman	Model Year: 1962
Year Built: 1962	Country: United States

Dimensions

LOA: 31' (9.45mm)	LWL: 30' 7" (9.32mm)
Max Draft: 3' 1" (0.94mm)	

Speed, Capacities and Weight

Water Capacity: 40 Gallons	Holding Tank: 20 Gal Gallons
Fuel Capacity: 220 Gal Gallons	

Accommodations

Total Cabins: 1	Sleeps: 2
Total Heads: 1	

Hull and Deck Information

Hull Material: Fiberglass

Hull Configuration: Deep Vee

Hull Color: Black

Hull Designer: Ray Hunt

Engine Information

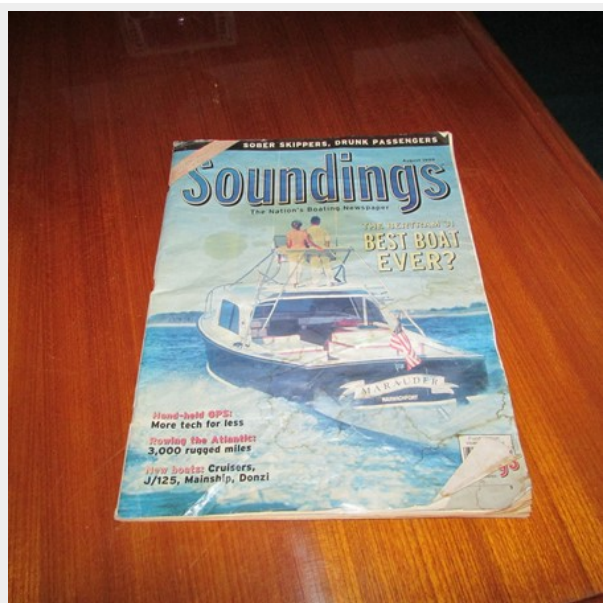
Engines: 2

Manufacturer: Cummins

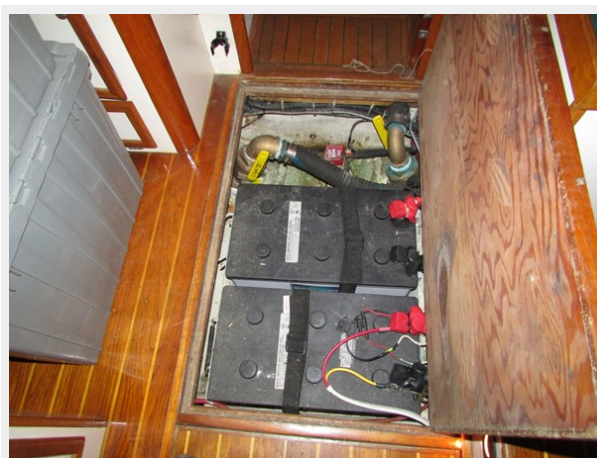
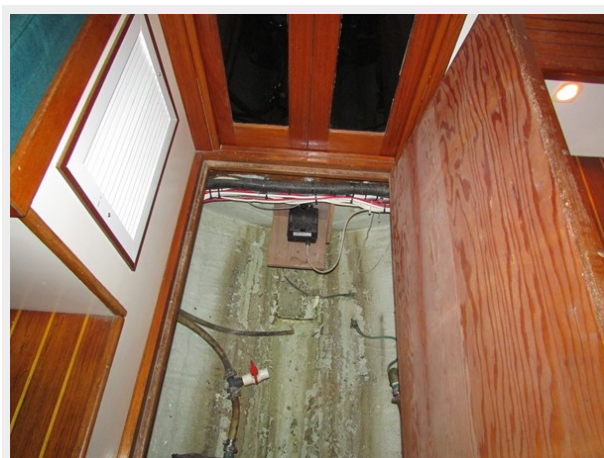
Engine Type: Inboard

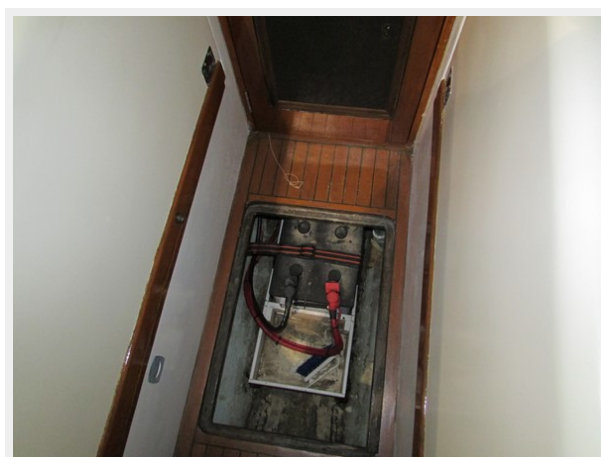
Fuel Type: Diesel

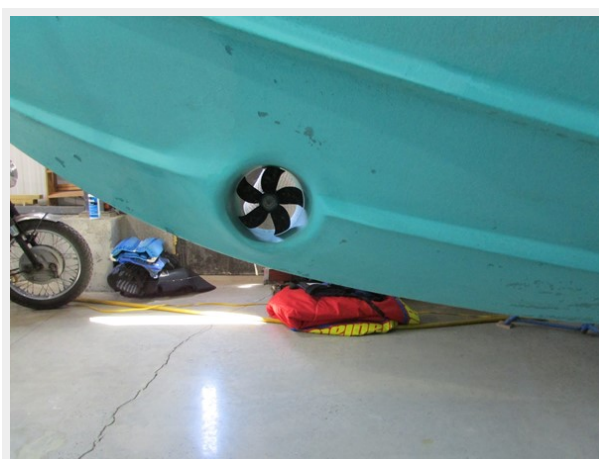
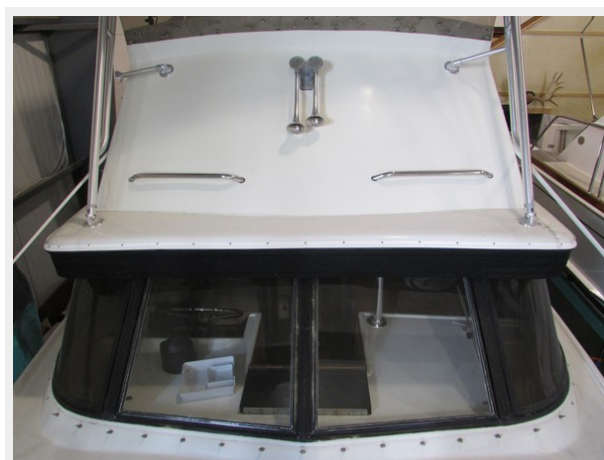
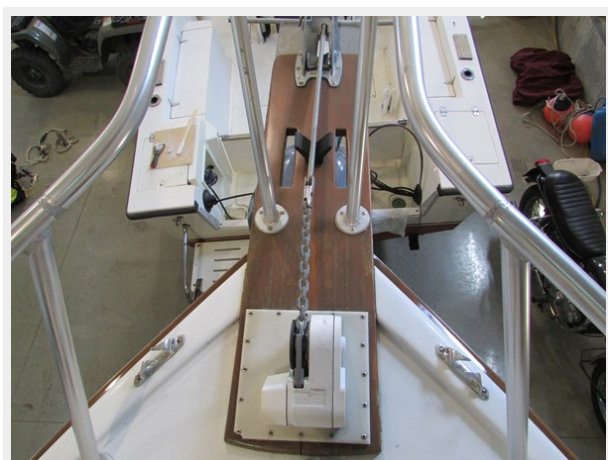
PHOTOS











CONTACTS

Andrey Shestakov, leading yacht broker of the sales department of Shestakov Yacht Sales Inc. Shestakov Yacht Sales Inc., the official representative of the Miami/Fort Lauderdale FL headquarters.

Contact details

Email:
andrey@shestakovyachtsales.com

Web: shestakovyachtsales.com/en/

Telephones

USA: **+1(954)274-4435**

Office hours

Monday – Saturday: **9:00 - 21:00 EDT**

Sunday: **closed**

Address



Harbour Towne Marina, 850 NE 3rd St,
STE 213, Dania, FL 33004