

SEA WRANGLER II — HINES FARLEY



Судостроитель: HINES FARLEY

Год постройки: 1983

Модель: Катер для спортивной рыбалки

Цена: **ЦЕНА ЯХТЫ ПО ЗАПРОСУ**

Местонахождение: United States

Длина общая: 34' 0" (10.36m)

Ширина: 12' 5" (3.78m)

Крейс. скорость: 28 Kts. (32 MPH)

Макс. скорость: 32 Kts. (37 MPH)

Купить **Sea Wrangler II — HINES FARLEY** а также выбрать подходящую вам яхту из нашего каталога яхт вам поможет опытный яхтенный брокер Андрей Шестаков. На сегодняшний день компания **Shestakov Yacht Sales Inc.** имеет большое количество яхт в собственном списке продаж, а также тесно сотрудничает со всеми крупными яхтенными производителями по всему миру.

Для того чтобы купить яхту **Sea Wrangler II — HINES FARLEY** а также проконсультироваться по любому вопросу связанному с покупкой, продажей, чартером яхт позвоните по телефону **+7(918)465-66-44**.

ОГЛАВЛЕНИЕ

ОГЛАВЛЕНИЕ	2
ХАРАКТЕРИСТИКИ	5
Основная информация	5
Размеры	5
Скорость, вместимость и масса	5
Размещение	5
Корпус и палуба	5
Информация о двигателе	5
ПОДРОБНОЕ ОПИСАНИЕ	6
Overview	6
V-Berth	6
Galley	6
Head	6
Electronics	7
Cockpit	7
Engine Room and Mechanical	7
Исключения	8
Отказ от ответственности	8
ФОТОГРАФИИ	9
Cabin	9
Cabin	9
Cabin	9
Cabin/Rod Storage	9
Cabin	9
Cabin	9
Helm	10
Helm	10
Helm	10

Helm	10
Helm	10
Helm	10
Helm	11
Cockpit	11
Cockpit	11
Cockpit	11
Cockpit	11
Cockpit	11
Engine Room	12
Engine Room	12
Engine Room	12
Engine Room	12
Engine Room	12
Engine Room	12
Bow	13
Sea Wrangler II	13
Sea Wrangler II	13
Sea Wrangler II	13
Sea Wrangler II	13
Sea Wrangler II	13
Sea Wrangler II	14
Sea Wrangler II	14
Stern	14
КОНТАКТЫ	15
Контактная информация	15
Телефоны	15
Время работы	15
Адрес	15

ХАРАКТЕРИСТИКИ

Основная информация

Тип судна: Катер для спортивной рыбалки

Модельный год: 1983

Год постройки: 1983

Страна: United States

Размеры

Длина общая: 34' 0" (10.36m)

Ширина: 12' 5" (3.78m)

Скорость, вместимость и масса

Крейс. скорость: 28 Kts. (32 MPH)

Макс. скорость: 32 Kts. (37 MPH)

Вместимость воды: 60 Gallons

Объем топливного бака: 390 Gallons

Размещение

Всего кают: 1

Корпус и палуба

Материал корпуса: Fiberglass

Информация о двигателе

Производитель: Cummins

Модель: QSC 540

Тип двигателя: Inboard

Тип топлива: Diesel

ПОДРОБНОЕ ОПИСАНИЕ

Overview

“Sea Wrangler” is truly a timeless piece of art! Built in Rescue, VA Hines-Farley is one of the best custom boat builders in the world representing quality and integrity. In 2003 the Robb Report ranked Hines-Farley as the #1 sport fish boat in the world. This boat was originally commissioned for Dr. Farley himself and was fished all over the world! And Sonny Hines caught his first marlin on this boat. Built on a Fiberglass cored hull painted with Fighting Lady Yellow and topped with a painted mahogany toe rail. This boat was ENTIRELY REDONE in 2008 at a cost of \$700K (receipts available). Everything from the engines to the hull, decks, electronics, tanks and systems have been replaced/updated to meet today’s standards and demands. Everything is CUSTOM even the drain system is custom with a completely centralized drain system. There are only (2) Thru-Hulls on the boat for drains. Truly a MUST SEE CAPTAIN MAINTAINED BOAT!

V-Berth

Located on forward bulkhead is access to custom anchor locker with custom built shelves, pre-wired for windlass and freshwater hook up. To Port and Starboard and above are 26 custom rod holders. Just below the center cushion of the berth is a lift up hatch to give access to the Raritan electric head. •(12) Over Head Rod Storage •(9) Port Rod holders •(9) Starboard rod Holders •(2) Incandescent reading lights (1 port and 1 Starboard) •Anchor Locker •Storage under berth •(2) JBL Speakers •Large Hatch over berth

Galley

In the galley area you will find plenty of counter space with a microwave to port and pantry storage to starboard and the floor is teak and holly. There is a custom built tackle center to port as well as your breaker panel and thermostat controls for your chiller boxes and A.C. Under the Port counter you will find access to your Dometic air compressor and a fire extinguisher. To starboard is a cabinet perfectly suited for dry storage items. There are (3) individually controlled chilled boxes that can be set from freezing to refrigerated depending on your demand. All the above lighting have been upgraded to LED. •Paneltronics Circuit board (32) 12V breakers, (16) 120V breakers •GE Microwave •Clarion 12V Stereo •Stainless sink (Hot/Cold) •Custom Tackle cabinet •Strip LED lighting (4) •Rule 1500 bilge pump (under sole) •Dometic AC Compressor •(3) Climate controlled boxes •JBL Amplifier •Sirius XM Weather •(2) Furuno Sounder boxes

Head

•Raritan electric head

Electronics

•(3) Furuno Navnet VX2 •(2) 3KW transducers (Flush mounted) •(2) CM Smart Craft Engine Digital displays •Clarion CMD4A XM Radio •Furuno RD30 •Ritchie Compass •Icom ICM-602 VHF •Furuno NavPilot Autopilot •12KW Furuno Radar •JBL Stereo Amplifier •(5) JBL Speakers •Sirius XM Weather •Running lights •Anchor Light •epirb

Cockpit

The teak covered cockpit and Release Fighting Chair highlight the fishing platform of this boat. To Starboard you will find a 75 gallon live well powered by an aerator and a separate circulation pump. Under the Starboard and Port gunwale are (2) large storage compartments housing your fresh and salt water outlets, (2) 12V electric reel outlets and (2) 30 amp power outlets. Above the on the covering boards port and starboard are (6) swivel mounted rod holders. To Port is another custom tackle center with a bait prep station on top. In the center under the step are your (2) Fuel tank fills and custom lead storage boxes. In the sole is a large stainless steel macerated fish box powered by a separate chiller compressor with a Eskimo Ice Chipper plumbed in as well. Aft is your lazzerette access. Mounted on the aluminum ladder and hardtop are (14) Rod holders with a blue/white LED Spreader light. •75 gallon Live well (2) pumps •Large Stainless Refrigerated Fish box •Eskimo Ice Chipper •Lazzerette access •Side locker storage •Custom tackle center •Fuel fill •Custom Lead storage boxes •(6) Swivel rod holders •(14) Ladder mounted rod holders •(2) Electric reel outlets •(2) 30 AMP Outlets •Tuna Door with lift gate •Custom removable swim platform •Removable swim ladder •Teak Sole and cover boards •Release fighting chair •LED Blue / White Spreader Light •Rupp 36' riggers •Fortress Anchor

Engine Room and Mechanical

•(2) Cummins QSC540 (2008) with ZF gears and trolling valves •Reverso oil change system (Gen, Gears, Mains) •(3) Odyssey PC1250 batteries (House and Mains) •(1) Odyssey PC1200 battery (Generator) •Tool chest (2) Drawer with lift top lid •Eskimo 600lb per day ice maker •(3) Frigomatic K50 compressors for chilled boxes in galley •(1) Tecumseh Chiller Unit (air cooled) for fish box •(3) Led Engine room lights •(1) Fluorescent light in engine room •24V Converter •Battery Isolator •Westerbeke 8KW Generator 250 Hours •Fuel Priming Pumps •(2) Electric actuators for helm sole lift •Hubbell Hot water Heater •Airmar Transducers •Rule 1500 gal/hr bilge pump •Fireboy Halon 1301 mod. 100cg Fire suppression system •(2) 4 Blade DQX Nibrall props 23"X29" •Rule 800 gal/hr Livewell pump •Rule 1600gal/hr Livewell pump •Sentry 12V 60amp Battery Charger •(2) Rancho Thermostat controls •Dripless shaft seals with spares •Bonding •Bennett V351 Trim tab pump •Kobelt steering ram •Dripless Rudder seals •12V Macerator pump •(2) 1500 gal/hr bilge pumps with electric float switches

Исключения

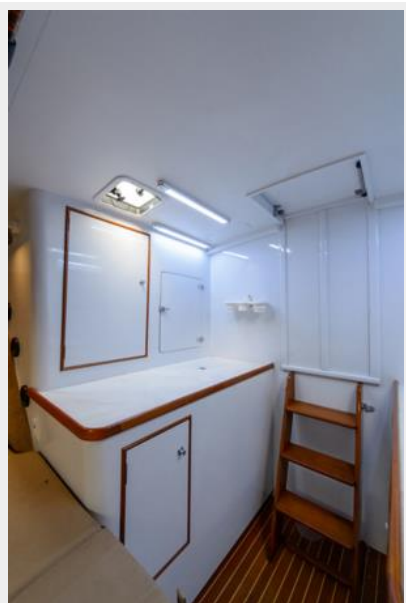
При продаже яхты исключаются личные вещи владельца.

Отказ от ответственности

Компания предоставляет описание судна или яхты добросовестно, но не может гарантировать точность этой информации, а также не ручается за техническое состояние. Покупатель должен проинструктировать своих агентов или оценщиков исследовать представленную информацию более подробно, по собственному желанию. Продажа судна или яхты, изменение цены или снятие с продажи будет происходить без предварительного уведомления.

ФОТОГРАФИИ

Cabin



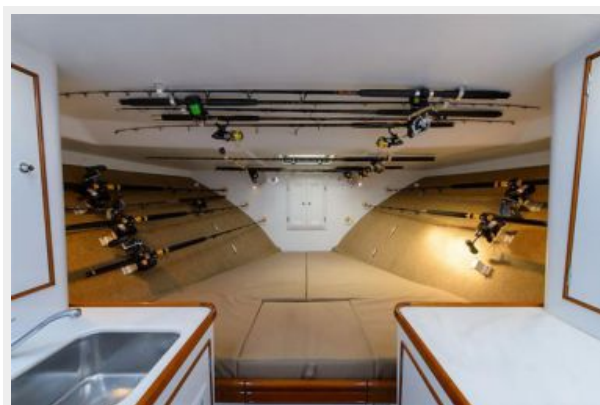
Cabin



Cabin



Cabin/Rod Storage



Cabin



Cabin



Helm



Helm



Helm



Helm



Helm



Helm



Helm



Cockpit



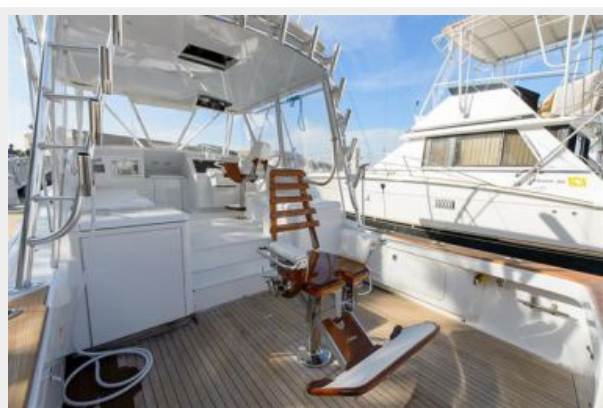
Cockpit



Cockpit



Cockpit



Cockpit



Engine Room



Engine Room



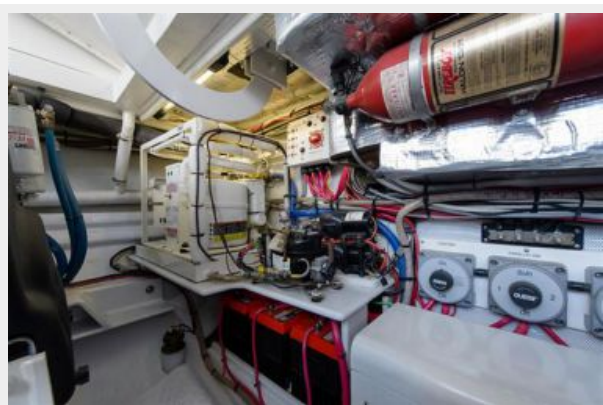
Engine Room



Engine Room



Engine Room



Engine Room



Bow



Sea Wrangler II



Sea Wrangler II



Sea Wrangler II



Sea Wrangler II



Sea Wrangler II



Sea Wrangler II



Sea Wrangler II



Stern



КОНТАКТЫ

Андрей Шестаков (Andrey Shestakov) – ведущий яхтенный брокер отдела продаж яхт и судов компании Shestakov Yacht Sales Inc. Официальный представитель Shestakov Yacht Sales Inc. для русскоговорящих клиентов в центральном офисе компании в Майами/Форт Лодердейл/Флорида/США.

Контактная информация

Email: andrey@shestakovyachtsales.com

Web: shestakovyachtsales.com

Телефоны

Краснодарский край: **+7(918)465-66-44**

США, Майами, Флорида: **+1(954)274-4435**

Время работы

Понедельник – Суббота: **9:00 - 21:00**
EDT

Воскресенье: **Закрето**

Адрес



Harbour Towne Marina, 850 NE 3rd St,
STE 213, Dania, FL 33004