

LADY MONROE — BROWARD



Builder: BROWARD

Year Built: 1982

Model: Motor Yacht

Price: PRICE ON APPLICATION

Location: United States

LOA: 85' 0" (25.91m)

Beam: 18' 2" (5.54m)

Max Draft: 5' 8" (1.73m)

Cruise Speed: 12 Kts. (14 MPH)

Max Speed: 15 Kts. (17 MPH)

Our experienced yacht broker, Andrey Shestakov, will help you choose and buy a yacht that best suits your needs **Lady Monroe — BROWARD** from our catalogue. Presently, at Shestakov Yacht Sales Inc., we have a wide variety of yachts available on our sale's list. We also work in close contact with all the big yacht manufacturers from all over the world.

If you would like to buy a yacht **Lady Monroe — BROWARD** or would like help answering any questions concerning purchasing, selling or chartering a yacht, please call **+1(954)274-4435**

TABLE OF CONTENTS

TABLE OF CONTENTS	2
SPECIFICATIONS	5
Basic Information	5
Dimensions	5
Speed, Capacities and Weight	5
Accommodations	5
Hull and Deck Information	6
Engine Information	6
DETAILED INFORMATION	7
Description	7
Walk Through	7
Cockpit	7
Aft Deck	8
Salon	8
Master Stateroom	9
Master Head & Shower	9
Port Guest Stateroom	9
Guest Head And Shower	9
Starboard Guest Stateroom	9
Starboard Guest Head And Shower	10
Flybridge	10
Galley	10
Crew Quarters	11
Crew Quarters Head And Shower	11
Engine Room	11
Electronics	12
Electrical System	12
Mechanical System	13

Deck Equipment	14
Salesman's Comments	15
Exclusions	15
Disclaimer	15
PHOTOS	16
Salon	16
Salon	16
Aft Deck	16
Salon/Aft Deck	16
Salon/Aft Deck	16
Dinette	16
Master Stateroom	17
Galley	17
Master Head	17
Master Stateroom	17
Master Head	18
Guest Stateroom	18
Guest Stateroom	18
Crew Quarters	18
Flybridge	18
Crew Quarters	18
Fly Bridge	19
Flybridge	19
Flybridge	19
Flybridge	19
Engine Room	19
Engine Room	19
Engine Room	20
Engine Room	20

Engine Room	20
CONTACTS	21
Contact details	21
Telephones	21
Office hours	21
Address	21

SPECIFICATIONS

Basic Information

Category: Motor Yacht

Sub Category: Raised Pilothouse

Model Year: 1982

Year Built: 1982

Country: United States

Fly Bridge: Yes

Cockpit: Yes

Dimensions

LOA: 85' 0" (25.91m)

Beam: 18' 2" (5.54m)

Max Draft: 5' 8" (1.73m)

Speed, Capacities and Weight

Cruise Speed: 12 Kts. (14 MPH)

Max Speed: 15 Kts. (17 MPH)

Displacement: 75089 Pounds

Water Capacity: 700 Gallons

Holding Tank: 475 Gallons

Fuel Capacity: 2400 Gallons

Accommodations

Total Cabins: 3

Total Berths: 5

Sleeps: 7

Total Heads: 4

Captain Cabin: True

Crew Cabin: 1

Crew Berths: 3

Crew Sleeps: 3

Crew Heads: 1

Hull and Deck Information

Hull Material: Aluminum

Engine Information

Engines: 2

Manufacturer: Detroit Diesel/Allison

Model: 8V92TI's

Engine Type: Inboard

Fuel Type: Diesel

DETAILED INFORMATION

Description

Constructed of welded aluminum for strength and security, "Lady Monroe" was built in 1982 by Broward Marine at the Saugatuck, Michigan ship yard as a 72' and extended to 85' in 1993. In 2005, a complete refit included exterior paint and an updated interior decor by Robin Rose & Associates.

The yacht accommodates seven owners & guests in three staterooms and has a crew quarters for three, forward. There is a 13' cockpit, enclosed aft deck, full width salon, on-deck head, raised pilothouse, large flybridge, and a country style galley with large dining lounge. The engine room is amidships, accessed from the crew quarters.

Walk Through

"Lady Monroe" may be entered from either side deck, forward near the pilot house, or from the large cockpit, easily accessed from the swim platform. Going up a few stairs, the fully enclosed aft deck is a very comfortable enclosed room with sofa and facing chairs. Forward separated from the afterdeck by glass bulkhead, the main salon is furnished with L-shaped sofa and easy chairs. Aft, a stairway leads to the master stateroom and two guest staterooms, each with it's own ensuite head and shower. Forward o the main salon is the day head and the country style kitchen with wrap around dinette forward. All the way forward is the staircase to the crew quarters for three and engine room access. The raised pilot house provides access to the large flybridge via a portside staircase.

Cockpit

Teak deck

Courtesy lights, port & starboard

Storage compartment, port & starboard

Welded aluminum steps with hand rail

Shower, hot & cold

Tackle center in forward CP area with Subzero freezer, sink, & storage

Big Sixty barbeque grill

Aft Deck

Fully enclosed with fixed frame windows & Texaline covers

Entry door on starboard side from CP

Louvered blinds on side windows

Padded headliner

L-shaped settee with storage under and glass table to port

Chair & ottoman

Carpeting

Salon

L-shaped settee with storage under

Glass coffee table

Arm chair with ottomans, port & starboard

Desk with chair

Chest of drawers

Carpet

Wet bar

Scotsman ice maker

Vizio flatscreen TV

Stereo, Sony audio/video

Sony DVD player KVH SAT TV

Glass sliding door to aft deck & glass bulkhead

Glass enclosed railing to staterooms

Mirrored forward bulkhead

Tile floor forward at bar

Master Stateroom

Sony flatscreen TV

King size berth

Dressers on port side

Aft bulkhead closet

Forward closet

Swing arm reading lamps

Master Head & Shower

Corian counter tops & sink

Mirror on bulkhead

Head inside enclosure

Jacuzzi tub and shower

Port Guest Stateroom

Magnavox flat screen TV

Twin berths with storage

Drawers & hanging locker

Guest Head And Shower

Head

Stall shower

Corian counter top & sink

Starboard Guest Stateroom

Magnavox flat screen TV

Twin berth with storage

Hanging locker

Desk w/ chest of drawers

Starboard Guest Head And Shower

Head

Stall shower

Corian counter top & sink

Flybridge

Helm station with necessary electronics

Helm & companion chair

Port & starboard bench seats

U-shaped seating aft w/storage under

Radar mast with bar base

Davit & dinghy & chocks

Life rafts (2)

Galley

Refrigerator: GE stainless steel with freezer, 3 doors

Bosch 4-burner electric range & oven

Bosch stainless steel microwave oven

Stainless steel dual sink & single lever faucet

ISE 444 garbage disposal

Bosch stainless steel dishwasher

GE Profile stainless steel trash compactor

Corian counter tops & matching dinette

GE front loading washer & dryer

Cabinets and draw storage

Tile flooring

Vizio flatscreen TV

Levelor blinds

Crew Quarters

Captain's quarters separate

Hanging and drawer storage

Dinette booth style

Over/under berths

Washer & dryer

Additional large refrigerator with freezer

Combination washer/dryer in engine compartment

Crew Quarters Head And Shower

Head & stall shower

Engine Room

Bilge blowers 230 VAC

Raw cooled exhaust system

Fuel transfer pump, Emerson 115 VAC

Panish engine controls

Raw water strainers

Stuffing box

Dual Racor fuel filters

DDA 8V92TI's

Transmissions Allison MH20, 2:1 ratio

Walker Airseps

Washer/dryer

Electronics

ICOM VHF radio IC-M56

ICOM VHF radio IC-M59

Glendinning synchronizer

Radar Simrad 72 mile

Garmin GPS 4212 color plotter

Simrad AP20 Auto Pilot

Simrad speed log IS12

Simrad depth IS12

Simrad IS15 Data

Northstar 961 X GPS

Compass, Danforth Constellation (2)

Cybernet CTX1000 hailer

Stereo: Kenwood KTS-300MR AM/FM/CD/MP3

Electrical System

12 & 24 Volt DC

Batteries; 1 Interstate 4D-XHD & 4 8D 12VDC in battery boxes

2 Banks of 2 each 24VDC & main Perko battery switches

Main electrical panel in engine room & sub panel pilot house

Magnetic breakers

Battery chargers: Sentry FR 24VDC, 40 amp

Battery chargers: Sentry FR 12VDC, 40 amp

AC electrical system: 120/240 Volt AC

2-250V/50Amp shore power inlets

Main electrical panel with rotary selector switch

Magnetic breakers

2- LaMarche Model A42-100-A/B1 shore power transformers

Northern Lights 25 KW generator, 1,100 hrs.

Starboard generator, 348 hours

Mechanical System

Naiad stabilizers, Model 252

Trim tabs, Bennett electric/hydraulic

Hydraulic steering

Cruisair AC, 230V chilled water (2 units)

Raw water cooling pumps (2) AO Smith

Fixed fire extinguisher system, Halon 1301

Bilge pumps (6), (1) 110 VAC forward engine room pump

High water alarm, engine room & forward bilge

Bonding system, Capac Model 50030

Propellers 4 blade and spare in aft bilge compartment

Windlass, Ideal 115VAC

Aluminum tender davit w/115VAC Golo Power winch

Tender: 1990 Wahoo 1250 tender w/1996 Johnson 40 hp OB

Wash-down system, raw water: bow, FB & starboard transom

Fuel tanks (2) 2,400 gallons

Fresh water (1) 600 gallons

Black water (1) 475 gallons

Macerator, WEG model

Craftsman fresh water pump

Water heater, Rheem 38 gallon

Carlisle and Finch search light

Ship's horn

Deck Equipment

Hull material, aluminum

Exterior painted white, Awlgrip

10 Port lights port & starboard sides

Cockpit door

Swim platform & swim ladder

Chain locker

Aluminum bow rail w/ boarding gates

Hawes pipes

Deck boxes, welded aluminum, port & starboard

Cleats 6" retractable on the transom

15" cleats, port/stbd transom & bow, 3 each side

Anchor chute & roller

Helm & companion seat at helm

Seating FB, port & starboard side

U-shape seating aft w/storage under

Bimini top & aft Bimini, black

Wet bar with Haier refrigerator

Double fluke anchor, Fortress FX-125, Fortress FX-37

2 Danforth style anchors

Chain rode

Life rafts (2) Avon (not currently inspected)

Name board lights

Forward seat on bow

Radar mast with bar base

Salesman's Comments

“Lady Monroe” is the perfect live-aboard and/or cruising yacht built at the Saugatuck ship yard, which was noted for excellent craftsmanship and quality. She is more than worthy of an inspection by any yachtsman looking for a large, three-stateroom yacht with separate crew quarters.

Price: \$560,000.00

Location: Stuart, Fl.

Exclusions

Owner's personal belongings.

Disclaimer

The Company offers the details of this vessel or yacht in good faith but cannot guarantee or warrant the accuracy of this information nor warrant the condition of the vessel. A buyer should instruct his representatives, agents, or his surveyors, to investigate such details as the buyer desires validated. This vessel or yacht is offered subject to prior sale, price change, or withdrawal without notice.

PHOTOS

Salon



Salon



Aft Deck



Salon/Aft Deck



Salon/Aft Deck



Dinette



Galley



Master Stateroom



Master Head



Master Stateroom



Master Head



Guest Stateroom



Guest Stateroom



Crew Quarters



Crew Quarters



Flybridge



Fly Bridge



Flybridge



Flybridge



Flybridge



Engine Room



Engine Room



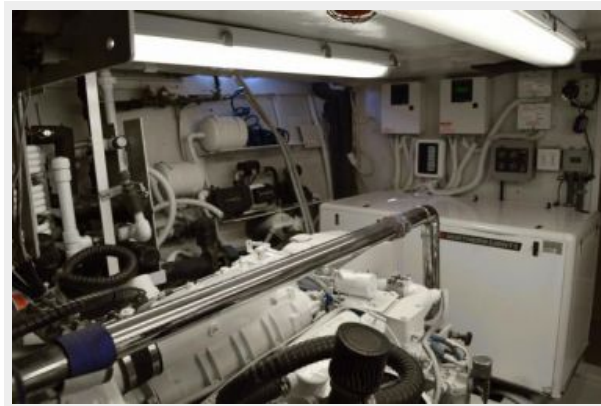
Engine Room



Engine Room



Engine Room



CONTACTS

Andrey Shestakov, leading yacht broker of the sales department of Shestakov Yacht Sales Inc. Shestakov Yacht Sales Inc., the official representative of the Miami/Fort Lauderdale FL headquarters.

Contact details

Email: andrey@shestakovyachtsales.com

Web: shestakovyachtsales.com/en/

Telephones

USA: +1(954)274-4435

Office hours

Monday – Saturday: **9:00 - 21:00** EDT

Sunday: **closed**

Address



Harbour Towne Marina, 850 NE 3rd St,
STE 213, Dania, FL 33004