

## LADY MONROE — BROWARD



**Судостроитель:** BROWARD

**Год постройки:** 1982

**Модель:** Моторная яхта

**Цена:** **ЦЕНА ЯХТЫ ПО ЗАПРОСУ**

**Местонахождение:** United States

**Длина общая:** 85' 0" (25.91m)

**Ширина:** 18' 2" (5.54m)

**Макс. осадка:** 5' 8" (1.73m)

**Крейс. скорость:** 12 Kts. (14 MPH)

**Макс. скорость:** 15 Kts. (17 MPH)

Купить **Lady Monroe — BROWARD** а также выбрать подходящую вам яхту из нашего каталога яхт вам поможет опытный яхтенный брокер Андрей Шестаков. На сегодняшний день компания **Shestakov Yacht Sales Inc.** имеет большое количество яхт в собственном списке продаж, а также тесно сотрудничает со всеми крупными яхтенными производителями по всему миру.

Для того чтобы купить яхту **Lady Monroe — BROWARD** а также проконсультироваться по любому вопросу связанному с покупкой, продажей, чартером яхт позвоните по телефону **+7(918)465-66-44**.

# ОГЛАВЛЕНИЕ

---

ОГЛАВЛЕНИЕ	2
ХАРАКТЕРИСТИКИ	5
Основная информация	5
Размеры	5
Скорость, вместимость и масса	5
Размещение	5
Корпус и палуба	6
Информация о двигателе	6
ПОДРОБНОЕ ОПИСАНИЕ	7
Description	7
Walk Through	7
Cockpit	7
Aft Deck	8
Salon	8
Master Stateroom	9
Master Head & Shower	9
Port Guest Stateroom	9
Guest Head And Shower	9
Starboard Guest Stateroom	9
Starboard Guest Head And Shower	10
Flybridge	10
Galley	10
Crew Quarters	11
Crew Quarters Head And Shower	11
Engine Room	11
Electronics	12
Electrical System	12
Mechanical System	13

Deck Equipment	14
Salesman's Comments	15
Исключения	15
Отказ от ответственности	15
ФОТОГРАФИИ	16
Salon	16
Salon	16
Aft Deck	16
Salon/Aft Deck	16
Salon/Aft Deck	16
Dinette	16
Master Stateroom	17
Galley	17
Master Head	17
Master Stateroom	17
Master Head	18
Guest Stateroom	18
Guest Stateroom	18
Crew Quarters	18
Flybridge	18
Crew Quarters	18
Fly Bridge	19
Flybridge	19
Flybridge	19
Flybridge	19
Engine Room	19
Engine Room	19
Engine Room	20
Engine Room	20

---

Engine Room	20
КОНТАКТЫ	21
Контактная информация	21
Телефоны	21
Время работы	21
Адрес	21

# ХАРАКТЕРИСТИКИ

## Основная информация

Тип судна: Моторная яхта

Подкатегория: Raised Pilothouse

Модельный год: 1982

Год постройки: 1982

Страна: United States

Открытая палуба мостика: Да

Кубрик: Да

## Размеры

Длина общая: 85' 0" (25.91m)

Ширина: 18' 2" (5.54m)

Макс. осадка: 5' 8" (1.73m)

## Скорость, вместимость и масса

Крейс. скорость: 12 Kts. (14 MPH)

Макс. скорость: 15 Kts. (17 MPH)

Водоизмещение: 75089 Pounds

Вместимость воды: 700 Gallons

Вместимость сточного бака: 475 Gallons Объем топливного бака: 2400 Gallons

## Размещение

Всего кают: 3

Всего коек: 5

Спальные места: 7

Всего ком. состава: 4

Каюта капитана: Да

Каюты экипажа: 1

Койки экипажа: 3

Спальных мест экипажа: 3

Комм. состав экипажа: 1

---

## Корпус и палуба

---

**Материал корпуса:** Aluminum

---

## Информация о двигателе

---

**Двигатели:** 2

**Производитель:** Detroit Diesel/Allison

**Модель:** 8V92TI's

**Тип двигателя:** Inboard

**Тип топлива:** Diesel

---

# ПОДРОБНОЕ ОПИСАНИЕ

---

## Description

---

Constructed of welded aluminum for strength and security, “Lady Monroe” was built in 1982 by Broward Marine at the Saugatuck, Michigan ship yard as a 72’ and extended to 85’ in 1993. In 2005, a complete refit included exterior paint and an updated interior decor by Robin Rose & Associates.

The yacht accommodates seven owners & guests in three staterooms and has a crew quarters for three, forward. There is a 13’ cockpit, enclosed aft deck, full width salon, on-deck head, raised pilothouse, large flybridge, and a country style galley with large dining lounge. The engine room is amidships, accessed from the crew quarters.

## Walk Through

---

“Lady Monroe” may be entered from either side deck, forward near the pilot house, or from the large cockpit, easily accessed from the swim platform. Going up a few stairs, the fully enclosed aft deck is a very comfortable enclosed room with sofa and facing chairs. Forward separated from the afterdeck by glass bulkhead, the main salon is furnished with L-shaped sofa and easy chairs. Aft, a stairway leads to the master stateroom and two guest staterooms, each with it's own ensuite head and shower. Forward o the main salon is the day head and the country style kitchen with wrap around dinette forward. All the way forward is the staircase to the crew quarters for three and engine room access. The raised pilot house provides access to the large flybridge via a portside staircase.

## Cockpit

---

Teak deck

Courtesy lights, port & starboard

Storage compartment, port & starboard

Welded aluminum steps with hand rail

Shower, hot & cold

Tackle center in forward CP area with Subzero freezer, sink, & storage

Big Sixty barbeque grill

---

## Aft Deck

---

Fully enclosed with fixed frame windows & Texaline covers

Entry door on starboard side from CP

Louvered blinds on side windows

Padded headliner

L-shaped settee with storage under and glass table to port

Chair & ottoman

Carpeting

---

## Salon

---

L-shaped settee with storage under

Glass coffee table

Arm chair with ottomans, port & starboard

Desk with chair

Chest of drawers

Carpet

Wet bar

Scotsman ice maker

Vizio flatscreen TV

Stereo, Sony audio/video

Sony DVD player KVH SAT TV

Glass sliding door to aft deck & glass bulkhead

Glass enclosed railing to staterooms

Mirrored forward bulkhead

Tile floor forward at bar



---

## Master Stateroom

---

Sony flatscreen TV

King size berth

Dressers on port side

Aft bulkhead closet

Forward closet

Swing arm reading lamps

---

## Master Head & Shower

---

Corian counter tops & sink

Mirror on bulkhead

Head inside enclosure

Jacuzzi tub and shower

---

## Port Guest Stateroom

---

Magnavox flat screen TV

Twin berths with storage

Drawers & hanging locker

---

## Guest Head And Shower

---

Head

Stall shower

Corian counter top & sink

---

## Starboard Guest Stateroom

---

Magnavox flat screen TV

Twin berth with storage

Hanging locker

Desk w/ chest of drawers

---

## Starboard Guest Head And Shower

---

Head

Stall shower

Corian counter top & sink

---

## Flybridge

---

Helm station with necessary electronics

Helm & companion chair

Port & starboard bench seats

U-shaped seating aft w/storage under

Radar mast with bar base

Davit & dinghy & chocks

Life rafts (2)

---

## Galley

---

Refrigerator: GE stainless steel with freezer, 3 doors

Bosch 4-burner electric range & oven

Bosch stainless steel microwave oven

Stainless steel dual sink & single lever faucet

ISE 444 garbage disposal

Bosch stainless steel dishwasher

GE Profile stainless steel trash compactor

Corian counter tops & matching dinette

GE front loading washer & dryer

Cabinets and draw storage

Tile flooring

Vizio flatscreen TV

Levelor blinds

---

## **Crew Quarters**

---

Captain's quarters separate

Hanging and drawer storage

Dinette booth style

Over/under berths

Washer & dryer

Additional large refrigerator with freezer

Combination washer/dryer in engine compartment

---

## **Crew Quarters Head And Shower**

---

Head & stall shower

---

## **Engine Room**

---

Bilge blowers 230 VAC

Raw cooled exhaust system

Fuel transfer pump, Emerson 115 VAC

Panish engine controls

Raw water strainers

Stuffing box

Dual Racor fuel filters

DDA 8V92TI's

Transmissions Allison MH20, 2:1 ratio

Walker Airseps

Washer/dryer

---

## Electronics

---

ICOM VHF radio IC-M56

ICOM VHF radio IC-M59

Glendinning synchronizer

Radar Simrad 72 mile

Garmin GPS 4212 color plotter

Simrad AP20 Auto Pilot

Simrad speed log IS12

Simrad depth IS12

Simrad IS15 Data

Northstar 961 X GPS

Compass, Danforth Constellation (2)

Cybernet CTX1000 hailer

Stereo: Kenwood KTS-300MR AM/FM/CD/MP3

---

## Electrical System

---

12 & 24 Volt DC

Batteries; 1 Interstate 4D-XHD & 4 8D 12VDC in battery boxes

2 Banks of 2 each 24VDC & main Perko battery switches

Main electrical panel in engine room & sub panel pilot house

Magnetic breakers

Battery chargers: Sentry FR 24VDC, 40 amp

Battery chargers: Sentry FR 12VDC, 40 amp

AC electrical system: 120/240 Volt AC

2-250V/50Amp shore power inlets

Main electrical panel with rotary selector switch

Magnetic breakers

2- LaMarche Model A42-100-A/B1 shore power transformers

Northern Lights 25 KW generator, 1,100 hrs.

Starboard generator, 348 hours

## Mechanical System

---

Naiad stabilizers, Model 252

Trim tabs, Bennett electric/hydraulic

Hydraulic steering

Cruisair AC, 230V chilled water (2 units)

Raw water cooling pumps (2) AO Smith

Fixed fire extinguisher system, Halon 1301

Bilge pumps (6), (1) 110 VAC forward engine room pump

High water alarm, engine room & forward bilge

Bonding system, Capac Model 50030

Propellers 4 blade and spare in aft bilge compartment

Windlass, Ideal 115VAC

Aluminum tender davit w/115VAC Golo Power winch

Tender: 1990 Wahoo 1250 tender w/1996 Johnson 40 hp OB

Wash-down system, raw water: bow, FB & starboard transom

Fuel tanks (2) 2,400 gallons

Fresh water (1) 600 gallons

Black water (1) 475 gallons

Macerator, WEG model

Craftsman fresh water pump

Water heater, Rheem 38 gallon

Carlisle and Finch search light

Ship's horn

## Deck Equipment

---

Hull material, aluminum

Exterior painted white, Awlgrip

10 Port lights port & starboard sides

Cockpit door

Swim platform & swim ladder

Chain locker

Aluminum bow rail w/ boarding gates

Hawes pipes

Deck boxes, welded aluminum, port & starboard

Cleats 6" retractable on the transom

15" cleats, port/stbd transom & bow, 3 each side

Anchor chute & roller

Helm & companion seat at helm

Seating FB, port & starboard side

U-shape seating aft w/storage under

Bimini top & aft Bimini, black

Wet bar with Haier refrigerator

Double fluke anchor, Fortress FX-125, Fortress FX-37

2 Danforth style anchors

Chain rode

Life rafts (2) Avon (not currently inspected)

Name board lights

Forward seat on bow

Radar mast with bar base

---

## Salesman's Comments

---

“Lady Monroe” is the perfect live-aboard and/or cruising yacht built at the Saugatuck ship yard, which was noted for excellent craftsmanship and quality. She is more than worthy of an inspection by any yachtsman looking for a large, three-stateroom yacht with separate crew quarters.

Price: \$560,000.00

Location: Stuart, Fl.

---

## Исключения

---

При продаже яхты исключаются личные вещи владельца.

---

## Отказ от ответственности

---

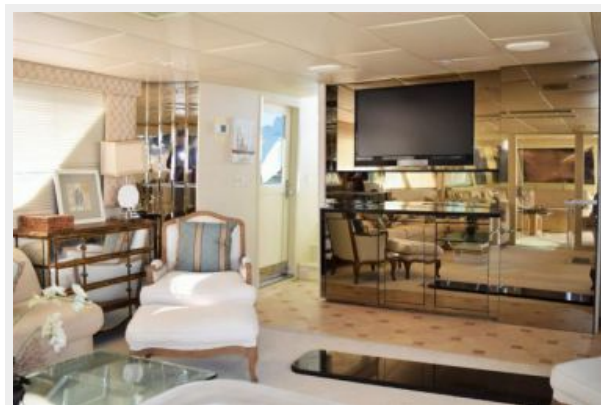
Компания предоставляет описание судна или яхты добросовестно, но не может гарантировать точность этой информации, а также не ручается за техническое состояние. Покупатель должен проинструктировать своих агентов или оценщиков исследовать представленную информацию более подробно, по собственному желанию. Продажа судна или яхты, изменение цены или снятие с продажи будет происходить без предварительного уведомления.

# ФОТОГРАФИИ

**Salon**



**Salon**



**Aft Deck**



**Salon/Aft Deck**



**Salon/Aft Deck**



**Dinette**





**Galley**



**Master Stateroom**



**Master Head**



**Master Stateroom**



**Master Head**



**Guest Stateroom**



**Guest Stateroom**



**Crew Quarters**



**Crew Quarters**



**Flybridge**





**Fly Bridge**



**Flybridge**



**Flybridge**



**Flybridge**



**Engine Room**



**Engine Room**



**Engine Room**



**Engine Room**



**Engine Room**



# КОНТАКТЫ

---

Андрей Шестаков (Andrey Shestakov) – ведущий яхтенный брокер отдела продаж яхт и судов компании Shestakov Yacht Sales Inc. Официальный представитель Shestakov Yacht Sales Inc. для русскоговорящих клиентов в центральном офисе компании в Майами/Форт Лодердейл/Флорида/США.

## Контактная информация

---

Email: [andrey@shestakovyachtsales.com](mailto:andrey@shestakovyachtsales.com)

Web: [shestakovyachtsales.com](http://shestakovyachtsales.com)

## Телефоны

---

Краснодарский край: **+7(918)465-66-44**

США, Майами, Флорида: **+1(954)274-4435**

## Время работы

---

Понедельник – Суббота: **9:00 - 21:00**  
EDT

Воскресенье: **Закрито**

## Адрес

---



Harbour Towne Marina, 850 NE 3rd St,  
STE 213, Dania, FL 33004