

WOODSTOCK — OCEAN ALEXANDER



Судостроитель: OCEAN ALEXANDER

Год постройки: 1999

Модель: Моторная яхта

Цена: **ЦЕНА ЯХТЫ ПО ЗАПРОСУ**

Местонахождение: United States

Длина общая: 45' 0" (13.72m)

Ширина: 14' 3" (4.34m)

Макс. осадка: 4' 0" (1.22m)

Крейс. скорость: 10 Kts. (12 MPH)

Купить **WOODSTOCK — OCEAN ALEXANDER** а также выбрать подходящую вам яхту из нашего каталога яхт вам поможет опытный яхтенный брокер Андрей Шестаков. На сегодняшний день компания **Shestakov Yacht Sales Inc.** имеет большое количество яхт в собственном списке продаж, а также тесно сотрудничает со всеми крупными яхтенными производителями по всему миру.

Для того чтобы купить яхту **WOODSTOCK — OCEAN ALEXANDER** а также проконсультироваться по любому вопросу связанному с покупкой, продажей, чартером яхт позвоните по телефону **+7(918)465-66-44**.

ОГЛАВЛЕНИЕ

ОГЛАВЛЕНИЕ	2
ХАРАКТЕРИСТИКИ	5
Основная информация	5
Размеры	5
Скорость, вместимость и масса	5
Размещение	5
Корпус и палуба	5
Информация о двигателе	6
ПОДРОБНОЕ ОПИСАНИЕ	7
Accommodations and Walkthrough	7
Исключения	10
Отказ от ответственности	10
ФОТОГРАФИИ	11
Starboard Profile	11
Starboard Profile	11
Port profile	11
Port Profile	11
Bow	11
Port Profile	11
Stern	12
Stern	12
Bow	12
Bow	12
Bow	13
Bow	13
Cockpit	13
Cockpit	13
Cockpit	13

Cockpit	13
Flybridge	14
Flybridge	14
Flybridge	14
Flybridge	14
Flybridge	14
Flybridge	14
Flybridge	15
Flybridge	15
Port Passageway	15
Flybridge	15
Starboard Passageway	16
Lower Helm	16
Lower Helm	16
Galley	16
Galley	17
Galley	17
Salon	17
Salon	17
Salon	17
Salon	17
Forward Stateroom	18
Forward Stateroom	18
Guest Stateroom	18
Forward Stateroom	18
Forward Head	19
Guest Head	19
Guest Head	19
Lazarette	19

Lazarette	20
Engine Room	20
Engine Room	20
Engine Room	20
Engine Room	20
Engine Room	20
Engine Room	21
Engine Room	21
КОНТАКТЫ	22
Контактная информация	22
Телефоны	22
Время работы	22
Адрес	22

ХАРАКТЕРИСТИКИ

Основная информация

Тип судна: Моторная яхта

Подкатегория: Sedan Cruiser

Модельный год: 1999

Год постройки: 1999

Страна: United States

Размеры

Длина общая: 45' 0" (13.72m)

Ширина: 14' 3" (4.34m)

Макс. осадка: 4' 0" (1.22m)

Скорость, вместимость и масса

Крейс. скорость: 10 Kts. (12 MPH)

Водоизмещение: 37000 Pounds

Вместимость воды: 200 Gallons

Вместимость сточного бака: 60 Gallons

Объем топливного бака: 600 Gallons

Размещение

Всего кают: 2

Корпус и палуба

Материал корпуса: Fiberglass

Информация о двигателе

Двигатели: 2

Производитель: Cummins

Тип двигателя: Inboard

Тип топлива: Diesel

ПОДРОБНОЕ ОПИСАНИЕ

Accommodations and Walkthrough

Entering the salon from the cockpit you will find an L-shaped settee with hi-lo table and desk to port. An additional settee with TV cabinet and ice maker is to starboard. Moving forward, the lower helm with electrical panel is to starboard. There is a sliding door next to the helm which gives quick access to the foredeck when docking. To port is the U-shaped galley with granite counters, stove, convection microwave oven, sink and refrigerator/freezer.

Moving forward and down, the guest stateroom with criss- crossing upper/lower berths is immediately to port. Across the companionway to starboard is the guest head which doubles as the day head. Forward is the master stateroom with centerline queen bed, hanging lockers and drawers and ensuite head with stall shower. The shower is shared by both the master and guest heads. All floors throughout the boat are teak and holly.

A ladder from the cockpit gives access to the expansive flybridge deck. The centerline helm is forward with two helm chairs. An L-shaped settee is to starboard with cushions and storage below. The aft bridge deck has room for the hard bottom inflatable tender, low profile davit and folding mast.

The side decks and cockpit are all non-skid fiberglass and are quite wide with high bulwarks making it very safe and easy to get around the boat. Stainless steel side and bow rails are forward as well as the bow pulpit with dual anchoring system and windlass.

The cockpit has a transom door leading to the fiberglass swim platform and the large lazarette area is accessed through a hatch in the cockpit floor. Engine room access is through a hatch in the forward salon floor.

GALLEY

- Kenyon three burner glasstop stove
- Ge profile convection microwave oven
- WAECO refrigerator/freezer
- U-Line ice maker
- Granite galley counters
- 10 gallon hot water heater
- Pressure fresh water system
- Double stainless steel sink
- Single lever faucet with sprayer

ELECTRICAL EQUIPMENT

- 8 kw Northern Lights generator in sound shield with 2400 hours
- 3000 watt inverter with Xantrax control panel at lower helm

- Solar panels that charge five inverter batteries
- Four dedicated thruster batteries
- Glendinning cablemaster with 50 amp shore cord
- 12 Volt automatic battery charger
- Battery isolator switches
- 110 volt/ 220 volt AC system
- 12 volt DC system
- Battery parallel switch
- TV and telephone dockside connectors
- 50 amp shore cord receptacle on starboard side forward
- AC/DC distribution panel
- Volt and amp meters

NAVIGATION EQUIPMENT

- Upper helm station:
 - Full engine gauge display
 - Furuno Nav-net VX2 GPS plotter
 - Furuno Nav-Net radar
 - Raytheon ST6000+ autopilot
 - Raytheon ST60 Tri-Data display
 - Northstar 926 GPS plotter
 - Furuno RD-30 speed/depth/log
 - West Marine VHF 480 radio
 - Side power bow and stern thruster controls
 - Danforth Constellation compass
 - Naiad stabilizer controls
 - Morse engine controls
- Lower Helm Station:
 - Raytheon ST 6000+ autopilot
 - Northstar 962 GPS/plotter
 - Raymarine ST 60 TriData display
 - Motorola Triton M100 VHF radio
 - Full engine gauge display]
 - Side power bow and stern thruster controls
 - Danforth Corsair compass
 - Insignia LCD TV (Salon)
 - Pioneer stereo (Salon)
 - KVH Tracvision M5 satellite TV

DECK EQUIPMENT

- Fiberglass flybridge hardtop
- Four-sided fiberglass flybridge enclosure with u-zips (New 2012)
- Bow pulpit with dual anchoring systems

- Side and bow rails
- Fortress FX-37 anchor
- Plow anchor
- Hinged folding radar mast
- Fiberglass swim platform
- Maxwell windlass with wildcat and footpad controls
- Aft cockpit sunshade
- Non-skid fiberglass decks
- Navigation and anchor lights
- Cockpit side doors and transom door
- Cockpit freshwater shower
- Cockpit courtesy lights
- Magma gas grill
- Foredeck fresh water washdown
- Viking “Rescyou” four person liferaft in canister
- Hydraulic low profile davit
- Hard bottom tender with 15 hp Honda 4-stroke outboard
- Windshield shade cover
- Two flybridge helm chairs with footrests
- ACT-RCL 75 remote controlled spotlight
- Cockpit steps
- Throwable life ring
- Overhead flybridge courtesy lighting
- L-shaped flybridge seating with cushions
- Four cockpit rod holders
- Two Flybridge rod holders

MECHANICAL EQUIPMENT

- Cummins 330 hp engines with 4800 hours
- ZF transmissions
- Cruisair reverse cycle air conditioning
- Glendinning engine synchronizer
- NAID Multisea II roll stabilizers
- Side power bow and stern thrusters
- Windshield wipers and washers
- Spare props
- Dripless shaft logs
- Sea cocks and sea strainers
- Hynautic hydraulic steering
- Bilge pump with high water alarms
- SK fresh water maker
- Three station intercom system
- Bennett trim tabs

- Dometic holding tank monitor
- Holding tank with pump-out
- “Tank Tender” fuel level system
- Oil change system
- Horn
- Engine room blowers
- Single Racor fuel filters – engines and generator

REMARKS

“WOODSTOCK” offers a two stateroom, two head layout with both cabins down and forward. The salon, galley, lower helm and cockpit are all on the main deck level. She features a large flybridge deck with fiberglass hardtop, full isinglass enclose and centerline helm forward. She is powered by the upgraded 330 hp Cummins diesel option and is equipped with bow and stern thrusters, watermaker, satellite TV, Naiad stabilizers and an inverter system which is charged by a solar panel. She was painted with awlgrip in 2012 and she shines.

EXCLUSIONS

Owner’s personal effects and the liferaft are excluded from the sale.

Исключения

При продаже яхты исключаются личные вещи владельца.

Отказ от ответственности

Компания предоставляет описание судна или яхты добросовестно, но не может гарантировать точность этой информации, а также не ручается за техническое состояние. Покупатель должен проинструктировать своих агентов или оценщиков исследовать представленную информацию более подробно, по собственному желанию. Продажа судна или яхты, изменение цены или снятие с продажи будет происходить без предварительного уведомления.

ФОТОГРАФИИ

Starboard Profile



Starboard Profile



Port profile



Port Profile



Bow



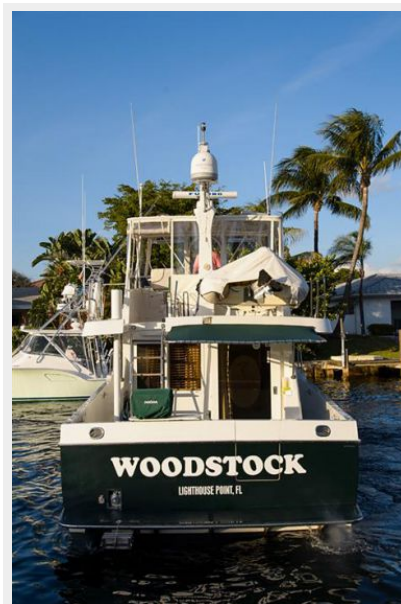
Port Profile



Stern



Stern



Bow



Bow



Bow



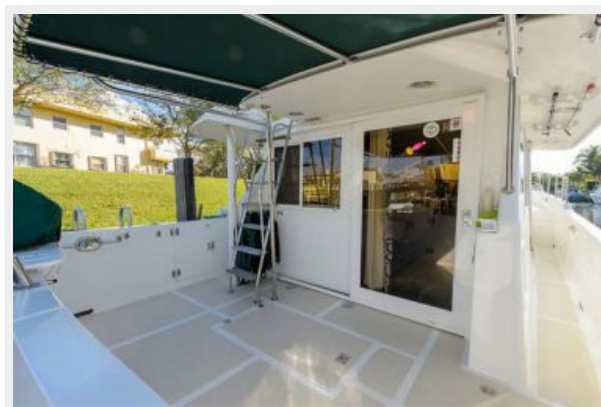
Bow



Cockpit



Cockpit



Cockpit



Cockpit



Flybridge



Flybridge



Flybridge



Flybridge



Flybridge



Flybridge



Flybridge



Flybridge



Port Passageway

Flybridge



Starboard Passageway



Lower Helm



Lower Helm



Galley



Galley



Galley



Salon



Salon



Salon



Salon



Forward Stateroom



Forward Stateroom



Forward Stateroom



Guest Stateroom



Forward Head



Guest Head



Guest Head



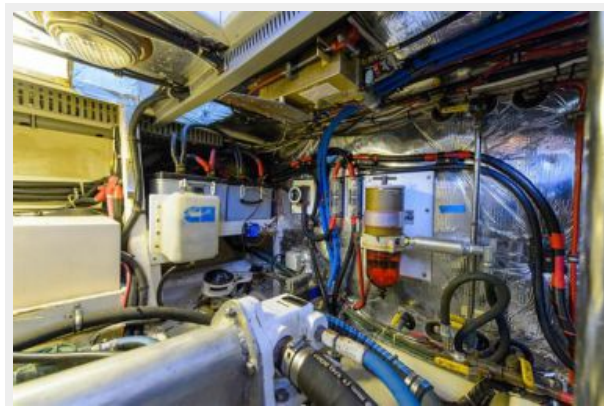
Lazarette



Lazarette



Engine Room



Engine Room



Engine Room



Engine Room



Engine Room



Engine Room



Engine Room



КОНТАКТЫ

Андрей Шестаков (Andrey Shestakov) – ведущий яхтенный брокер отдела продаж яхт и судов компании Shestakov Yacht Sales Inc. Официальный представитель Shestakov Yacht Sales Inc. для русскоговорящих клиентов в центральном офисе компании в Майами/Форт Лодердейл/Флорида/США.

Контактная информация

Email: andrey@shestakovyachtsales.com

Web: shestakovyachtsales.com

Телефоны

Краснодарский край: **+7(918)465-66-44**

США, Майами, Флорида: **+1(954)274-4435**

Время работы

Понедельник – Суббота: **9:00 - 21:00**
EDT

Воскресенье: **Закрыто**

Адрес



Harbour Towne Marina, 850 NE 3rd St,
STE 213, Dania, FL 33004