

## DANNESKJOLD — SEALINE



**Builder:** SEALINE

**Year Built:** 2005

**Model:** Motor Yacht

**Price:** PRICE ON APPLICATION

**Location:** United States

**LOA:** 52' 0" (15.85m)

**Beam:** 21' 8" (6.60m)

**Cruise Speed:** 27 Kts. (31 MPH)

**Max Speed:** 30 Kts. (35 MPH)

Our experienced yacht broker, Andrey Shestakov, will help you choose and buy a yacht that best suits your needs **Danneskjold — SEALINE** from our catalogue. Presently, at Shestakov Yacht Sales Inc., we have a wide variety of yachts available on our sale's list. We also work in close contact with all the big yacht manufacturers from all over the world.

If you would like to buy a yacht **Danneskjold — SEALINE** or would like help answering any questions concerning purchasing, selling or chartering a yacht, please call **+1(954)274-4435**

---

# TABLE OF CONTENTS

---

TABLE OF CONTENTS	2
SPECIFICATIONS	6
Overview	6
Basic Information	6
Dimensions	6
Speed, Capacities and Weight	6
Accommodations	7
Hull and Deck Information	7
Engine Information	7
DETAILED INFORMATION	8
Salon	8
Galley	8
VIP Guest Stateroom	9
Starboard Guest Stateroom	9
Guest Head	9
Helm Stations	9
Pilothouse	10
Aft Deck & Flybridge	10
Micellaneous Equipment	11
Exclusions	11
Disclaimer	12
PHOTOS	13
Salon	13
Salon	13
Salon	13
Salon	13
Salon	13
Salon	13

---

Salon	14
Salon	14
Salon	14
Salon	14
Salon	14
Salon	14
Galley	15
Galley	15
Galley	15
Galley	15
Master Stateroom	15
Master Stateroom	15
Master Stateroom	16
Master Stateroom	16
Master Head	16
Master Head	16
Master Head	17
Companionway	17
VIP Stateroom	17
VIP Stateroom	17
VIP Stateroom	17
VIP Stateroom	17
Guest Head	18
Guest Head	18
Guest Stateroom	18
Guest Stateroom	18
Wash & Dryer	19
Companionway Fridge	19
Crew Quarters	19

---

---

Crew Quarters	19
Stairs to Pilothouse	20
Pilothouse	20
Pilothouse Helm	20
Pilothouse Helm	20
Pilothouse Helm	20
Pilothouse Table	20
Pilothouse Table	21
Pilothouse VHF	21
Main Distribution Panel	21
Flybridge Helm	21
Stairs to Flybridge	21
Flybridge Helm Seat	21
Forward to Bow	22
Flybridge Seating	22
Flybridge Seating	22
Flybridge Electronics	22
Flybridge Electronics	22
Engine Room	22
Engine Room	23
Bow	23
Bow Sunpad	23
Cockpit	23
Cockpit	23
Salon Door	23
Cockpit Wet Bar & Grill	24
Cockpit Fridge	24
Swim Platform	24
Spare Prop	24

---

---

Profile	24
Profile	24
Transom Profile	25
Profile	25
Profile	25
Profile	25
CONTACTS	26
Contact details	26
Telephones	26
Office hours	26
Address	26

---

# SPECIFICATIONS

---

## Overview

---

This beautiful 2005 Marquis 50 SE has been very well maintained. She is in excellent condition. This flybridge motor yacht offers a deep v hull for an excellent ride, impressive interior wood work and exterior gelcoat work. She has an expansive three stateroom / two head layout. The master is forward with a centerline queen berth and a private head. The VIP Guest Stateroom is large and to the port. The Starboard Guest Stateroom offers twin berth. All staterooms have their own dedicated Sharp 15" LCD TV, DVD, and SAT TV receiver. The pilothouse, galley, and salon area offer several leather settee's and twin cherry wood tables. It is an excellent socializing area at the dock or underway. The salon, galley, dinette, lower companionways, aft deck, and all stairwells offer teak decking. The aft deck is generous with seating facing forward, a Sharp 20" LCD TV under the aft deck overhang, and a davit for your tender or waverunner. There is a staircase leading to the expansive flybridge. The flybrige offers ample seating, a sun pad, wet bar, grill, refrigeration, ice maker and an upper helm. She comes with a full flybridge enclosure for inclimate weather operation. The owner's spared no expense and ordered virtually every available option plus more custom items. "Danneskjold" is a true must see. If you are looking for a well built, reliable flybridge motor yacht. She is truly second to none.

## Basic Information

---

**Category:** Motor Yacht

**Model Year:** 2005

**Year Built:** 2005

**Country:** United States

## Dimensions

---

**LOA:** 52' 0" (15.85m)

**Beam:** 21' 8" (6.60m)

## Speed, Capacities and Weight

---

**Cruise Speed:** 27 Kts. (31 MPH)

**Max Speed:** 30 Kts. (35 MPH)

**Displacement:** 44000 Pounds

**Water Capacity:** 168 Gallons

**Fuel Capacity:** 540 Gallons

---

## Accommodations

---

**Total Cabins:** 4

**Total Heads:** 3

---

## Hull and Deck Information

---

**Hull Material:** Fiberglass

---

## Engine Information

---

**Engines:** 2

**Manufacturer:** Cummins

**Model:** QSM-11

**Fuel Type:** Diesel

---

## DETAILED INFORMATION

---

### Salon

---

- Cherry Salon Table
- Large Settee - Leather
- 2 Pull up Chairs to Salon Table
- Bose Life Style surround sound system
- Salon Door Curtains
- Salon Blinds
- Salon Port Settee - Leather
- Ships Clock & Barometer in Salon
- Isotherm Ice Maker in Salon cabinet
- Upgrade to Sharp 30" LCD TV in Salon
- SAT TV Receiver for Salon

### Galley

---

- Sharp Microwave/Convection Oven
- Double Stainless Steel Sink with Cover
- Solid Surface Countertops
- Grohe Faucet
- Kenyon 3 Burner Cooktop
- Companionway Refrigerator & Freezer
- Companionway Teak Flooring and Steps to Pilothouse
- Central Vacuum system
- Crew Quarters (under Aft Deck) with Twin Berths, Head, Air Conditioning and Reverse Cycle Heat
- Three Stateroom / 2 Head Layout
- Master Stateroom in Bow
- Centerline Queen Berth
- Bose Acoustimass 20 Stereo System
- Bose 3rd Zone Kit
- Bose 4th Zone Kit
- Portlights
- Blinds
- Separate Sharp 15" TV and DVD Player
- Separate SAT TV Receiver
- Private Master Head
- Stall Shower
- Vessel Sinks
- Teak Flooring



- Jabsco Electric Head

---

## VIP Guest Stateroom

---

- Large Berth
- Portlights
- Blinds
- Separate Sharp 15" TV and DVD Player
- Separate SAT TV Receiver

---

## Starboard Guest Stateroom

---

- Twin Berths
- Portlight
- Blinds
- Separate Sharp 15" TV and DVD Player
- Separate SAT TV Receiver
- Washer / Dryer Combo in Locker

---

## Guest Head

---

- Stall Shower
- Vessel Sinks
- Teak Flooring
- Jabsco Electric Head

---

## Helm Stations

---

- Lower Helm
- Micro commander electronic controls with digital guages and analogue tachometers
- Additional 110V outlet in Helm Area
- 12v outlet
- Searchlight
- Raymarine 240 VHF Radio with Speaker
- Raymarine E120 12.1" Multifunction Color Display with GPS/WASS
- Raymarine ST6001 Autopilot
- Raymarine ST2 90 Graphic Display
- Engine Synchronizer
- Cummins Cruise Control
- Low Idle Switch - Cummins

- Back-up Controls
- Engine room fans control
- Sea Fire Protection System
- Trim Tabs with Indicator Lights
- Wipers (2)
- Washer Fluid
- Demister
- Bow Thruster
- Stern Thruster
- Tilt Helm at Pilothouse Helm
- Upper Helm
- Radar and Antenna Mast
- Raymarine 4' Open Radar Array 10 kw
- Raymarine E120 Color Multifunction Display, 12.1"
- Raymarine ST6001 Smartpilot Second Head for Autopilot
- Raymarine ST2 90 Repeater Display
- KVH SAT TV Antenna - Tracvision 4 HP
- Raymarine 240 VHF Radio with Speaker and Hailer Horn
- Cummins Sea Cruise Controls
- Trim Tab Controls and Indicators
- Engine Synchronizer
- Low Idle Switch
- Bow and Stern Thruster Controls
- Spotlight Control
- Clarion AM/FM/CD Stereo with 2 Speakers

---

## Pilothouse

---

- Cherry Dinette Table
- Dinette Settee - Leather

---

## Aft Deck & Flybridge

---

- Aft Deck
- Fresh & Raw Water Washdowns
- Glendinning Cable Master
- Dockside Water Inlet with pressure valve
- Hot & Cold Aft Deck Shower
- Sharp 20" LCD TV in Aft Deck Overhang with Fold Down Mount & Canvas Cover
- Aft Deck Cover

- Davit between Aft Deck and Swim Platform
- Swim Platform
- Swing Gates Port and Starboard to Swim Platform
- Aft Deck Storage Lockers Port and Starboard
- Forward Facing Lounge on Aft Deck
- Sliding Door above Stairwell to Flybridge
- Flybridge
- Flybridge Wet Bar
- Flybridge Barbeque
- Flybridge Refrigerator
- Large Portside L-Lounge with Storage
- Helm Station with Seating
- Sun Pad Lounge
- Bimini Top with Full Enclosure
- Flybridge Seat Covers
- Horns

## Micellaneous Equipment

---

- Fresh water Washdown forward
- Teak interior floors in the Salon, Dinette, Helm, and Companionways
- Upgrade to Pale Magnolia Leather
- Sunpad on the bow
- Hot Water Heater
- Waste Discharge Pump
- 8 Portlights
- Generator
- Fuel Filters
- Battery Charger
- Spare Propellers
- Sony CD/Stereo with Four Speakers
- Underwater Lights (2)
- Aft Deck, Swim Platform, Exterior Stairwells and Davit Top in Teak Decking
- Electric Salon & Pilothouse Windows (4)
- Windlass
- Windshield Cover - Black Mesh
- Water and Waste Tank Guages
- AC/DC Distribution Panel
- Air Conditioning & Reverse Cycle Heat Throughout

## Exclusions

---

Owner's personal belongings.

## **Disclaimer**

---

The Company offers the details of this vessel or yacht in good faith but cannot guarantee or warrant the accuracy of this information nor warrant the condition of the vessel. A buyer should instruct his representatives, agents, or his surveyors, to investigate such details as the buyer desires validated. This vessel or yacht is offered subject to prior sale, price change, or withdrawal without notice.

# PHOTOS

Salon



Salon



Salon



Salon



Salon



Salon



Salon



Salon



Salon



Salon



Salon



Salon



**Galley**



**Galley**



**Galley**



**Galley**



**Master Stateroom**



**Master Stateroom**



**Master Stateroom**



**Master Stateroom**



**Master Head**



**Master Head**





**Master Head**



**Companionway**



**VIP Stateroom**



**VIP Stateroom**



**VIP Stateroom**



**VIP Stateroom**



**Guest Head**



**Guest Head**



**Guest Stateroom**



**Guest Stateroom**



**Wash & Dryer**



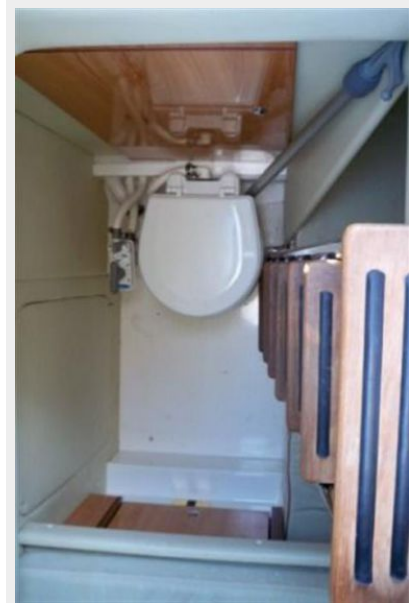
**Companionway Fridge**



**Crew Quarters**



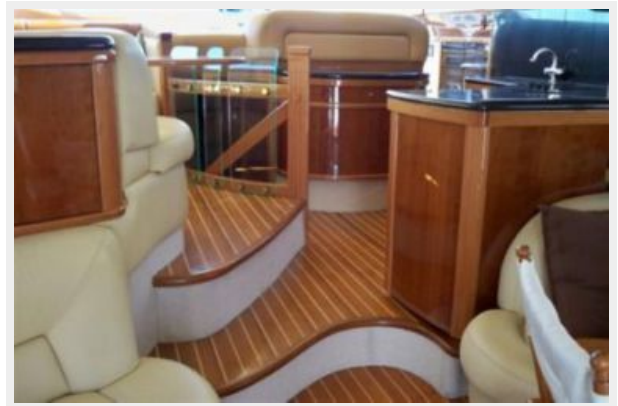
**Crew Quarters**



**Stairs to Pilothouse**



**Pilothouse**



**Pilothouse Helm**



**Pilothouse Helm**



**Pilothouse Helm**



**Pilothouse Table**



**Pilothouse Table**



**Pilothouse VHF**



**Main Distribution Panel**



**Flybridge Helm**



**Flybridge Helm Seat**



**Stairs to Flybridge**



**Forward to Bow**



**Flybridge Seating**



**Flybridge Seating**



**Flybridge Electronics**



**Flybridge Electronics**



**Engine Room**



**Engine Room**



**Bow**



**Bow Sunpad**



**Cockpit**



**Cockpit**



**Salon Door**



**Cockpit Wet Bar & Grill**



**Cockpit Fridge**



**Swim Platform**



**Spare Prop**



**Profile**



**Profile**





**Profile**



**Transom Profile**



**Profile**



**Profile**



# CONTACTS

---

Andrey Shestakov, leading yacht broker of the sales department of Shestakov Yacht Sales Inc. Shestakov Yacht Sales Inc., the official representative of the Miami/Fort Lauderdale FL headquarters.

## Contact details

---

Email: [andrey@shestakovyachtsales.com](mailto:andrey@shestakovyachtsales.com)

Web: [shestakovyachtsales.com/en/](http://shestakovyachtsales.com/en/)

## Telephones

---

USA: +1(954)274-4435

## Office hours

---

Monday – Saturday: **9:00 - 21:00** EDT

Sunday: **closed**

## Address

---



Harbour Towne Marina, 850 NE 3rd St,  
STE 213, Dania, FL 33004