

OUR TRADE — AZIMUT



Builder: [AZIMUT](#)

Year Built: 2011

Model: Motor Yacht

Price: PRICE ON APPLICATION

Location: United States

LOA: 70' 0" (21.34m)

Beam: 18' 2" (5.54m)

Max Draft: 5' 5" (1.65m)

Cruise Speed: 28 Kts. (32 MPH)

Max Speed: 32 Kts. (37 MPH)

Our experienced yacht broker, Andrey Shestakov, will help you choose and buy a yacht that best suits your needs **OUR TRADE — AZIMUT** from our catalogue. Presently, at Shestakov Yacht Sales Inc., we have a wide variety of yachts available on our sale's list. We also work in close contact with all the big yacht manufacturers from all over the world.

If you would like to buy a yacht **OUR TRADE — AZIMUT** or would like help answering any questions concerning purchasing, selling or chartering a yacht, please call **+1(954)274-4435**

TABLE OF CONTENTS

TABLE OF CONTENTS	2
SPECIFICATIONS	5
Overview	5
Basic Information	5
Dimensions	5
Speed, Capacities and Weight	5
Accommodations	5
Hull and Deck Information	6
Engine Information	6
DETAILED INFORMATION	7
Accommodations	7
Exclusions	11
Disclaimer	11
PHOTOS	12
2011 Azimut 70 OUR TRADE	12
2011 Azimut 70 OUR TRADE	12
Bow seating area	12
Bow	12
Bow	13
Bow seating area	13
Side walk	13
Cockpit	13
Cockpit	14
Cockpit	14
Cockpit	14
Flybridge access through Cockpit	14
Flybridge	14
Flybridge	14

Grill on flybridge	15
Flybridge helm	15
Flybridge helm	15
Flybridge helm	15
Flybridge	16
Flybridge table	16
Flybridge sunbathing area	16
Flybridge sunbathing area	16
Main deck	16
Salon	16
Salon	17
Salon	17
Dining area	17
Salon	17
Dining area	17
Dining area	17
Main helm	18
Main helm	18
Galley	18
Galley	18
Master cabin	19
Master cabin	19
Master cabin	19
Master cabin	19
Master cabin	20
Master cabin	20
Master cabin head	20
Master cabin head	20
VIP cabin	21

VIP cabin	21
VIP cabin head	21
VIP cabin	21
VIP cabin head	22
Guest cabin 1	22
Guest cabin 1	22
Guest cabin 1	22
Guest cabin 1 head	23
Guest cabin 2	23
Guest cabin 2	23
Guest cabin 2	23
Guest cabin 2 head	24
Crew area	24
Crew area	24
Crew cabin	24
Crew cabin head	25
Engine room	25
Engine room	25
2011 Azimut 70 OUR TRADE	25
2011 Azimut 70 OUR TRADE	26
CONTACTS	27
Contact details	27
Telephones	27
Office hours	27
Address	27

SPECIFICATIONS

Overview

Recently listed 2011 70' Azimut flybridge motoryacht with 765 original hours. Loaded with equipment including twin gyro stabilizers, bow and stern thrusters, flybridge hardtop, AFT flybridge chaise lounges and numerous other options. Located at our undercover showroom in Fort Lauderdale, Florida. Trades considered Contact Jon Burkard at 772-260-1415 for more details.

Basic Information

Category: Motor Yacht

Model Year: 2011

Year Built: 2011

Country: United States

Vessel Top: Hardtop

Fly Bridge: Yes

Dimensions

LOA: 70' 0" (21.34m)

Beam: 18' 2" (5.54m)

Max Draft: 5' 5" (1.65m)

Speed, Capacities and Weight

Cruise Speed: 28 Kts. (32 MPH)

Max Speed: 32 Kts. (37 MPH)

Displacement: 90440 Pounds

Water Capacity: 317 Gallons

Fuel Capacity: 1268 Gallons

Accommodations

Total Cabins: 4

Crew Cabin: 2

Hull and Deck Information

Hull Material: Composite Fiberglass

Hull Color: White

Engine Information

Engines: 2

Manufacturer: MAN

Model: V12 1360 HP

Engine Type: Inboard

Fuel Type: Diesel

DETAILED INFORMATION

Accommodations

Layout Main Deck- Helm Station Multitask display: Alarm LEDs for: bow bilge, engine bilge, helm compartment bilge, grey water high level, black water high level, Racor filters, navigation lights, shore Sockets, low battery voltage, engine room fans, low fuel level. -Direct access to the side walkways -Rudder angle indicator -MAN indicators -Cigarette lighters -Autopilot -Levers -Manual depth light -Remote controlled light -Pilot seat (for 2 people: pilot and copilot) - Adjustable steering wheel in stainless steel and cherry wood -Peaks and handrails -Computer support on the left side -Chain meter counter -Magnetic compass -Joystick for encoder - Joystick for trim tabs -Joystick for wipers -24V 220V electric panel -12V cigarette lighter socket Controls for: -Activation of: bow anchor winch, navigation lights, bow & stern thruster, windshield wiper and washer, trim tabs, fire fighting pump -Engine ignition (synchronism function) -Engine electronic remote controls (levers) -Side window opening MAN display: -Rev. counter -Hour counter steering wheel/ rudder -Engine pressure gauges -Marine gear pressure gauges - Ammeter -Marine gear thermometers -Engine thermometers -Alarm indicator -Fuel tank level indicator -Water tank level indicator -Grey water tank drainage LOWER DECK: -Passageway with carpeted floor to enter the lower deck -Spot lighting **Electronic** Electric System - Main Characteristics Power sources: Generator Two 20 kW Kohler generator, located in the engine room Shore power socket Two 220V, 50A shore power sockets AC energy sources are controlled by the main electric panel in the auxiliaries room, supplied by a voltmeter and a frequency meter for the 220 V power. Energy sources are protected by fuse elements with a suitable calibration and they are installed on the net by remote breakers with remote control. Batteries 12 AGM 90AH 24V Exide batteries (total: 540AH): 8 for services and 4 for engine start-up 1 AGM 70AH 12V Exide battery for generator 1 Dolphin 12V 10A 115-230 battery charger for generator 1 Dolphin 24V 80Abattery charger for services batteries Lights and sockets AC sockets: 220V for the main halogen lighting DC sockets: 24V for soft lighting and emergency - Voltage on board: 220 V AC – 50Hz (110V in the 60Hz version), 24 V DC, - 12V DC. - Main electric panels, installed as follows: Auxiliaries room (main panel) - Helm station - Junction boxes are installed in all areas - Utilities- On the main electric panel, installed in the auxiliaries room: 24V: bilge pumps, oil drainage pump, davit, steering system, cable winder, gangway. - 220V: A/C system, air extractor, fan, water maker, washing machine, shore power socket, tumble dryer - Users - On the electric panel in the helm station: 24V: navigation instruments, instrument panel, wipers, horn, electric window, navigation lights, pilot seat, saloon lighting, cockpit lighting, dinette lights, galley lights, helm station lights, controls - 12V: sockets, stereo system, VHF - 220V: water heater, oven, ice maker, dishwasher, hob, fridge, sockets, battery charger, first generator battery charger, second generator battery charger, waste disposal unit Navigation Electronics - Helm - (2) G series 15" displays - Log speedometer - Depth finder - Motronica display encoder - 6002 autopilot - ST 600 Tridata - R240 VHF - 2 Digital man indicators - Cigarette lighter - Joystick for trim tabs/joystick for wipers station - Flybridge - (2) Raymarine 15" G series displays - 6002 autopilot - ST 600 Tridata - Raymarine 48 nm aerial - R240E VHF - second station - 2 Man indicators - Cigarette lighters - Steering joystick - Joystick for new trim

tab - Stereo / CD radio watertight cover - Log - Cartographic plotter - Autopilot - GPS
 VMultitask display: Alarm LEDs for: bow bilge, engine bilge, helm compartment bilge, grey water high level, black water high level, Racor filters, navigation lights, shore Sockets, low battery voltage, engine room fans, low fuel level. -Direct access to the side walkways -Rudder angle indicator -MAN indicators -Cigarette lighters -Autopilot -Levers -Manual depth light -Remote controlled light -Pilot seat (for 2 people: pilot and copilot) -Adjustable steering wheel in stainless steel and cherry wood -Peaks and handrails -Computer support on the left side -Chain meter counter -Magnetic compass -Joystick for encoder -Joystick for trim tabs -Joystick for wipers - 24V 220V electric panel -12V cigarette lighter socket Controls for: -Activation of: bow anchor winch, navigation lights, bow & stern thruster, windshield wiper and washer, trim tabs, fire fighting pump -Engine ignition (synchronism function) -Engine electronic remote controls (levers) -Side window opening MAN display: -Rev. counter -Hour counter steering wheel/ rudder -Engine pressure gauges -Marine gear pressure gauges -Ammeter -Marine gear thermometers -Engine thermometers -Alarm indicator -Fuel tank level indicator -Water tank level indicator -Grey water tank drainage **Equipment** Rudders -In Nibral alloy with suitable area for improved handling Bow Thruster -10 kW 24V SP200TC 13,5Hp Bow-thruster, Side power **Exterior** Flybridge: - Access from the cockpit via a GPR internal stairway faced in wood - Access hatch opening: hinged opening with deck hatch made in aluminum and Plexiglas - Height adjustable aluminum steering wheel - Teak table - 4 watertight speakers - Sunbathing cushions at bow - Stern seat - Glass-holders for pilot and passenger - Plexiglas windshield with stainless steel frame - Engine control instrumentation (MAN terminal): - Engine ignition - Rev. counter/hour counter - Engine pressure gauges - Marine gear pressure gauges - Ammeters - Engine thermometers - Marine gear thermometers - Alarm LEDs - The pilot dashboard includes: - Engine electronic remote controls – throttles - 10 Carling buttons - Cigarette lighter - Compass - Trim tab controls and indicators - New trim tab joystick - Engine and marine gear instrumentation - Horn and navigation light controls - Bow thruster - Controls - Rudder angle indicator - Steering wheel control - Fire fighting pump controls - 12v cigarette lighter socket - Electric searchlight control - Navigation lights - Electric searchlight - Bow thruster - Watertight I-boat system Deck Bridge and Cockpit: - Access through small doors on both sides - Pulpit in stainless steel on the side bulwark - Extra-thick tempered glass windows, integrated into the hull structure by gluing without any metal frames - Starboard side watertight door on the superstructure for access to the galley - Stainless steel rub rail - Fuel and water fillers on the side walkways - Black water tank discharge intake on the side walkways - 2 cleats, amidships, for each side - Wood facing on the walkways - Electric windows on the port side (helm station) - 2 side access doors on the - Bulwark to the stern cockpit Bow: - 2500W Lofrans anchor winch - Anchor winch controls - Anchor peak with drainage and fender compartment - Chain washdown - Fairleads - Custom stainless steel anchor - Anchor chain: 12mm diameter, 200mlength, 520 kg weight - Hawse hole (anchor passage at stern) - 2 wipers on the fore windshield - 2 stainless steel cleats (one on each bulkhead) - Anchor chain compartment - Deck hatch - 2 fore handrail bars for sunbathing cushions - Side windows and windshield net covers - Sunbathing cushions and glass holders Stern: - Access to the cockpit from the bathing platform by 2 GPR ladders and the gangway Cleats - Saloon access door with 2 stainless steel-crystal glass shutters - Cockpit bench - Engine room access - Wooden facings - Lighting: spots on the ceiling - Two electric warping winches - Wood-faced bathing platform with 750kg maximum capacity - Tender compartment -

2 stainless steel fairleads (one on each side) - Side peaks and compartments (under the cleats) - Lights on the bathing platform - Wooden cockpit table - 3 m length electro hydraulic retracting gangway (150 kg maximum lifting capacity) - Shore water intake - Shower with hot and cold water mixer - Manual bathing ladder Main Deck- Helm Station: Multitask display: Alarm LEDs for: bow bilge, engine bilge, helm compartment bilge, grey water high level, black water high level, Racor filters, navigation lights, shore Sockets, low battery voltage, engine room fans, low fuel level. - Direct access to the side walkways - Rudder angle indicator - MAN indicators - Cigarette lighters - Autopilot - Levers - Manual depth light - Remote controlled light - Pilot seat (for 2 people: pilot and copilot) - Adjustable steering wheel in stainless steel and cherry wood - Peaks and handrails - Computer support on the left side - Chain meter counter - Magnetic compass - Joystick for encoder - Joystick for trim tabs - Joystick for wipers - 24V 220V electric panel - 12V cigarette lighter socket - Controls for: - Activation of: bow anchor winch, navigation lights, bow & stern thruster, windshield wiper and washer, trim tabs, fire fighting pump - Engine ignition (synchronism function) - Engine electronic remote controls (levers) - Side window opening - MAN display: - Rev. counter - Hour counter steering wheel/ rudder - Engine pressure gauges - Marine gear pressure gauges - Ammeter - Marine gear thermometers - Engine thermometers - Alarm indicator - Fuel tank level indicator - Water tank level indicator - Grey water tank drainage **Mechanicals** Bilge Pumps - Centralized system with suction in each watertight compartment, connected to the main manifold, in the engine room: Four 24V automatic motor pumps, flow range: 240 l/min in cabin area, in engine room, auxiliaries room and steering compartment - 3-Way valve on engine cooler system - Four bilge level alarms - Emergency suction in engine room, connected to one of the two engine sea water intakes Fire Fighting System - Fire-fighting system located in the engine room - Two sea water intakes connected to a 24V motor pump - Engine room ventilation ducts closure - Engine fuel delivery shut off - 1 12 kg powder cylinder with support Remote Fuel Shut Off USA Version: 1 SEAFIRE FD-1300M canister (gas used: FM-200) in the engine room for local discharge. SEAFIRE power unit "Engine shut down system" to switch off engines, generators, extractors and fans off automatically at the same time as the gas is discharged. Fuel System - Two steel tanks (type: communicating), each with a capacity of 2,400 l, in the engine room - Port tank electronic fuel level indicator in the helm station - Starboard tank sight gauge - Double filters for main engines Fresh Water System - 3 400l stainless steel tanks - Water filler on the walkway - Tank level indicator in the helm station - Tank breather - 100l water heater - Shore water intake - Hot/cold water line - Engine room cold water line - Freshwater for WC washing Grey Water Tanks - 1 stainless steel tank, capacity 250 l - Water discharge directly into the sea by 3-way valve - Pump switch - 24V centrifugal pump, capacity 70 l/min - Level sensor, status indicator in the helm station Black Water Tanks - 2 Polyethylene tanks, each with a capacity of 225 - Level sensor - Pump start-up switch - Tank breather - 24V, 70 l/min macerator pump in every WC - Washing pump - Discharge into the sea Sea Water System - Engine cooler system - Generator set cooler system - Air conditioning cooler system - Chain washdown - Cockpit wash Engine Room - Access from the crew cabin, cockpit - Cooling bilge system pump - Two 220V fans - Two 220V air extractors Engine Exhaust Emission - External/submerged by-pass exhaust system - Stainless steel exhaust pipes - Submerged exhaust GRP structural duct - Minimum by-pass pipes for gas exhaust when the boat is idle or travelling at low speeds Water/smoke separator with side exhaust for generator A/C System, Ventilation and Extraction - Air conditioning -

Cruisair 90.000 BTU with air diffuser in VIP and master head compartment. - A/C controls in all cabins, saloon and dinette - Compressor cooling - FANCOILS: - 3 for Saloon Dinette - 2 for Windshield Area - 2 for Master Cabin - 1 for VIP Cabin - 1 for Starboard Cabin - 1 for Port Cabin - 2 for Crew Cabin Ventilation - Engine room ventilation/air extraction guaranteed by two 220 V fans and two 220 V extractor - Head compartment air extraction system by two 24 V extractors with controls in the VIP and owner's head compartment Hydraulic System - 1 Pump on the starboard engine for the steering system - 1 24V Electro hydraulic pump for the trim tabs - 1 24V Electro-hydraulic pump for gangway and bathing platform - 1 24V Electro-hydraulic pump for davit - 1 24V Pump for engine and generator oil change **Main saloon** - Optional wood flooring - One 3-seat sofa at bow and one 3-seat sofa at stern - 1 Pouffe that converts to a coffee table, located between the two sofas, in front of the TV - Furniture in matt varnished (decapé) oak wood - Steps up into the dinette - Folding curtains - Saloon door curtain DINETTE: - 1 central table - One 3-seat sofa on the left of the table and 3 chairs on the right - Unit on the right - Small bar unit (for drinks) and fridge fitted with ice maker at stern, on the starboard side Small unit to store glassware, cutlery and tableware under the stairs to fly bridge - CD-radio supplied with remote control and 4 speakers (2 for saloon, 2 for dinette) - Stairway down to lower deck - Lighting: spots on the ceiling - Speakers - Curtains, upholstery and carpet **Master cabin and bathroom** MASTER CABIN (AMIDSHIP): - Stairs to enter the cabin - 1 Double bed - Mattress, pillows and bedspread - Smoked glass mirrors on headboard - Headboard in technical fabric - 1 Armchair at bow - 1 Armchair at stern - 2 Appliques on headboard - Furniture in matt varnished (decapé) oak wood - Walk-in wardrobe - Chest of drawers - Vanity unit - TV - Samsung LED - 4 drawers under TV - Spot lighting - 4 portholes that can be opened (2 on each side) - 8 windows (4 on each side) - Deck hatch (emergency exit through the walk-in wardrobe) - Master cabin head compartment entrance - Carpeted floor - Venetian blinds MASTER HEAD: - Entrance from master cabin - TECMA W.C. - 2 washbasins with top in light coloured marble - 2 taps - Integrated mixer tap with thermostatic function - Shower cubicle with tray in light-coloured marble - Stainless steel soap holder integrated in the shower column - 2 cabinets 2 wall cabinets - Cabinet with 2 wooden shutters, under the washbasins - Wooden floor - Spot lighting - 1 porthole that can be opened, complete with wooden venetian blind - 1 air extractor - Chrome-plated head accessories **VIP cabin and bathroom** - 1 Double bed - Mattress, pillows and bedspread - Headboard in technical fabric Smoked glass mirrors on headboard - Furniture in varnished (decapé) oak wood - 1 Wardrobe - 2 Wall cabinets - 1 Drawer unit under the bed - 1 Mirror - 2 Appliques on headboard - Spot lighting - 2 Portholes that can be opened (1 on each side) - 10 Windows (5 on each side) - Head compartment entrance - TV - Samsung LED - Carpeted floor - Blinds - Wooden facing on bulwark VIP Head: - Direct access from VIP cabin - TECMA W.C. - 1 Sink with top in light coloured marble - 1 Tap - Integrated mixer tap with thermostatic function - Shower cubicle with 2 overlapping sliding shutters - Stainless steel soap holder integrated in the shower column - 1 Wall cabinet - Wooden floor - Spot lighting - 1 Porthole that can be opened, complete with wooden - Venetian blind - 1 Air extractor (controlled by 1 shared extractor located in the bow peak for VIP and guest head compartments) - Chrome-plated head accessories **Guest cabin and bathroom 1** Guest Cabin and Head- Port Side: - Two single berths - Mattresses, pillows and bedspreads - Mirrors on headboard - Furniture in matt varnished (decapé) oak wood - 1 Unit - 1 Nightstand - Drawers in front of the berths - Wooden facing on bulwark - 2 Appliques - Spot lighting - 1 Porthole that can be opened -

Wooden venetian blind - TV - Samsung LED - Carpeted floor Guest Head: - Direct access from the guest cabin and the passageway - TECMA W.C. - 1 Sink with top in light-coloured marble - 1 Tap - Integrated mixer tap with thermostatic function - Shower cubicle with 2 overlapping sliding shutters - Stainless steel soap holder integrated in the shower column - 1 Wall cabinet - Wooden floor - Spot lighting - 1 Porthole that can be opened, complete with wooden venetian blind - 1 Air extractor (controlled by 1 shared extractor located in the bow peak for VIP and guest head compartments) - Chrome plated head accessories **Guest cabin and bathroom 2** Guest Cabin and Head: - Two single berths - Mattresses, pillows and bedspread - Smoked glass mirrors on headboard - Furniture in matt varnished (decapé) oak wood - 1 Unit - 1 Nightstand - Wooden facing on bulwark - 1 Porthole that can be opened - TV - Samsung LED - Carpeted floor - 2 Appliques - Spot lighting - Wooden venetian blinds Guest Head: - Access from the guest cabin - TECMA W.C. - 1 Sink with top in light coloured marble - 1 Tap - Integrated mixer tap with thermostatic function - Shower cubicle with 2 overlapping sliding shutters - Stainless steel soap holder integrated in the shower column - 1 Wall cabinet - Wooden floor - Spot lighting - 1 Porthole that can be opened, with wooden venetian blind - 1 Air extractor (controlled by 1 shared extractor located in the bow peak for VIP and guest head compartments) - Chrome-plated head accessories **Galley** - Wooden floor - Light-coloured marble worktop and splash back - 2 Stainless steel sinks - Sink top in light coloured marble - Drawers and wall cabinets - 4 burner ceramic glass hob with stainless steel fiddle rail - Microwave oven - Fridge/Freezer - Dishwasher

(Show to: **Public**) Accessories

Optional Equipment - 2 Seakeeper, active gyro stabilizer - Bow & Stern Thrusters - Factory installed Sofabed in Salon - 3 Lounges for Bridge - 4 Chairs for Lazarette - Aft Lights on Bridge - Central Vac - Deluxe Curtain - Double Cable Master - Electric Backrests Salon - Engine Controls in Chrome - (2) Ray Marine G Series Package - Gangway - Hardtop - Head Tops in Marble - Hull Paint - Joystick - Teak Cutting Board - Teak on Fly - Two Lamps - 8 Underwater Lights - Wooden Floor in Galley, Helm - Spare Propellers

Exclusions

Owner's personal belongings.

Disclaimer

The Company offers the details of this vessel or yacht in good faith but cannot guarantee or warrant the accuracy of this information nor warrant the condition of the vessel. A buyer should instruct his representatives, agents, or his surveyors, to investigate such details as the buyer desires validated. This vessel or yacht is offered subject to prior sale, price change, or withdrawal without notice.

PHOTOS

2011 Azimut 70 OUR TRADE



2011 Azimut 70 OUR TRADE



Bow seating area



Bow



Bow



Bow seating area



Side walk



Cockpit



Cockpit



Cockpit



Cockpit



Flybridge access through Cockpit



Flybridge



Flybridge



Grill on flybridge



Flybridge helm



Flybridge helm



Flybridge helm



Flybridge



Flybridge table



Flybridge sunbathing area



Flybridge sunbathing area



Main deck



Salon



Salon



Salon



Dining area



Salon



Dining area



Dining area



Main helm



Main helm



Galley



Galley



Master cabin



Master cabin



Master cabin



Master cabin



Master cabin



Master cabin



Master cabin head



Master cabin head



VIP cabin



VIP cabin



VIP cabin



VIP cabin head



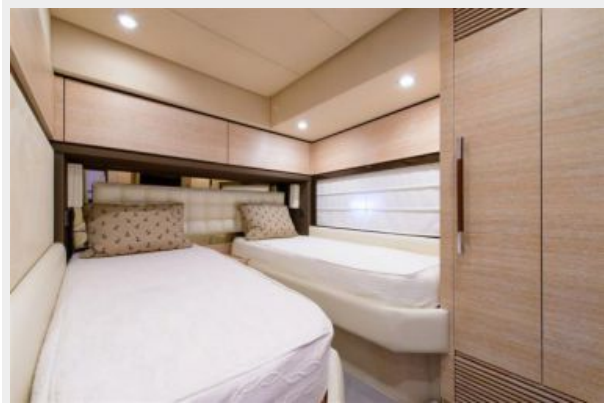
VIP cabin head



Guest cabin 1



Guest cabin 1



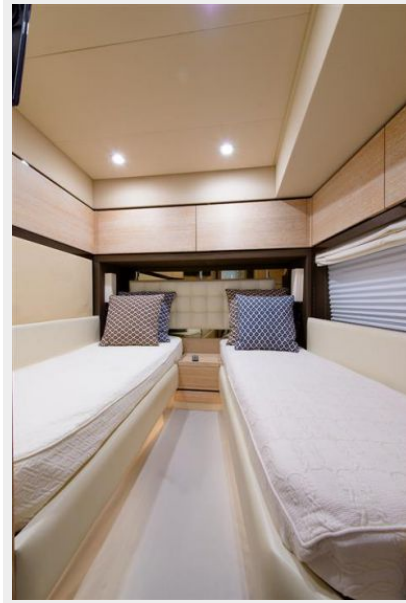
Guest cabin 1



Guest cabin 1 head



Guest cabin 2



Guest cabin 2



Guest cabin 2



Guest cabin 2 head



Crew area



Crew area



Crew cabin



Crew cabin head



Engine room



Engine room



2011 Azimut 70 OUR TRADE



2011 Azimut 70 OUR TRADE



CONTACTS

Andrey Shestakov, leading yacht broker of the sales department of Shestakov Yacht Sales Inc. Shestakov Yacht Sales Inc., the official representative of the Miami/Fort Lauderdale FL headquarters.

Contact details

Email: andrey@shestakovyachtsales.com

Web: shestakovyachtsales.com/en/

Telephones

USA: +1(954)274-4435

Office hours

Monday – Saturday: **9:00 - 21:00** EDT

Sunday: **closed**

Address



Harbour Towne Marina, 850 NE 3rd St,
STE 213, Dania, FL 33004