

SECOND WIND — GRAND BANKS



Builder: GRAND BANKS

Year Built: 2002

Model: Cruiser

Price: PRICE ON APPLICATION

Location: United States

LOA: 38' 0" (11.58m)

Beam: 13' 2" (4.01m)

Min Draft: 3' 4" (1.02m)

Cruise Speed: 22 Kts. (25 MPH)

Max Speed: 28 Kts. (32 MPH)

Our experienced yacht broker, Andrey Shestakov, will help you choose and buy a yacht that best suits your needs **SECOND WIND — GRAND BANKS** from our catalogue. Presently, at Shestakov Yacht Sales Inc., we have a wide variety of yachts available on our sale's list. We also work in close contact with all the big yacht manufacturers from all over the world.

If you would like to buy a yacht **SECOND WIND — GRAND BANKS** or would like help answering any questions concerning purchasing, selling or chartering a yacht, please call **+1(954)274-4435**

TABLE OF CONTENTS

| | |
|------------------------------|----|
| TABLE OF CONTENTS | 2 |
| SPECIFICATIONS | 4 |
| Basic Information | 4 |
| Dimensions | 4 |
| Speed, Capacities and Weight | 4 |
| Accommodations | 4 |
| Hull and Deck Information | 4 |
| Engine Information | 5 |
| DETAILED INFORMATION | 6 |
| Overview | 6 |
| Accommodations | 6 |
| Engines | 7 |
| Electrical | 7 |
| Electronics | 8 |
| Exclusions | 8 |
| Disclaimer | 9 |
| PHOTOS | 10 |
| Profile | 10 |
| Aft Deck | 10 |
| foredeck | 10 |
| windless | 10 |
| foredeck | 10 |
| Starboard side deck | 11 |
| Mast and equipment | 11 |
| Cockpit air conditioning | 11 |
| Helm electronics | 11 |
| Navnet | 11 |
| Galley ice maker | 11 |

| | |
|----------------------------------|----|
| Undercounter refrigerator | 12 |
| Adler Barber chest refrigerator. | 12 |
| Princess gas stove and microwave | 12 |
| Salon | 12 |
| Salon aft | 12 |
| Master berth | 12 |
| Helm | 13 |
| Port engine | 13 |
| filters port | 13 |
| filters starboard | 13 |
| Westerbeke 7.5 Kw | 13 |
| CONTACTS | 14 |
| Contact details | 14 |
| Telephones | 14 |
| Office hours | 14 |
| Address | 14 |

SPECIFICATIONS

Basic Information

Category: Cruiser

Sub Category: Downeast

Model Year: 2002

Year Built: 2002

Country: United States

Dimensions

LOA: 38' 0" (11.58m)

Beam: 13' 2" (4.01m)

Min Draft: 3' 4" (1.02m)

Clearance: 9' 3" (2.82m)

MFG Length: 38' 0" (11.58m)

Speed, Capacities and Weight

Cruise Speed: 22 Kts. (25 MPH)

Max Speed: 28 Kts. (32 MPH)

Displacement: 28500 Pounds

Water Capacity: 95 Gallons

Fuel Capacity: 344 Gallons

Accommodations

Total Cabins: 1

Total Berths: 1

Total Heads: 1

Hull and Deck Information

Hull Material: Fiberglass

Engine Information

Engines: 2

Manufacturer: Caterpillar

Model: 3208

Engine Type: Inboard

Fuel Type: Diesel

DETAILED INFORMATION

Overview

SECOND WIND is a fine example of the world renowned Eastbay 38 line. Superior design, Performance and construction are synonymous with this Downeast express cruiser. She has been well maintained by her knowledgeable owner. Priced for immediate sale she is a must see for anyone looking for a quality downeast cruiser.

Accommodations

STATEROOM:

The stateroom is located forward featuring a large V-berth with filler cushion. There are storage cabinets on either side above the V-berth as well as a chest of drawers on the starboard side. This is a particularly well ventilated stateroom with a large hatch in the ceiling, opening stainless steel ports on either side and overhead lights.

HEAD

Head is on the port side forward of the galley. This is a combination head/shower with curtain. There is storage both above and below the large countertops. Vacu-Flush head system.

SALON:

Opposite the Galley on the starboard side is the Salon featuring a settee covered in blue ultra-suede. A Hi-Lo table is featured. Forward of the settee is a flat screen TV. There are a number of storage areas in the Salon as well as a CD/stereo system and speakers throughout. All ports are stainless steel that open as well as two hatches above.

GALLEY:

The well designed galley is located to port and features a deep stainless steel sink, princess three burner propane stove, with a 110 V Microwave/Convection oven and ample storage on all sides. Aft lies the 12V Cool-matic refrigeration with a teak door for frontal access. There is a separate top loading stainless steel freezer box in the corner.

Pressure fresh water system

Water heater

2 Propane tanks

HELM AREA:

The helm area is under a factory hardtop and is fully air conditioned. There are dual hatches in

the overhead as well as sliding glass windows port and starboard. The center forward window also opens to allow fresh air flow when desired. The helm area has an L-shaped settee with a varnished custom teak/maple Hi-Lo table to port and a single captains chair to starboard. The entire area is closed off with Isinglass enclosures.

COCKPIT:

The cockpit is very large with a teak sole and three lazarette hatches. There is a transom door leading onto the teak swim platform with a swim ladder. There is a hot and cold freshwater shower located on the transom.

Engines

MECHANICAL:

Twin 375 HP Cat 3208 TA Main Engines

2" Shafts turning 24X32 4 bladed props and driplless shaft seals.

Westerbeke 7.6 Kw Genset with Aqualift muffler.

12V oil change system

Sealand Vacuflush Head system

Hynautic single station hydraulic steering

Bennet Trim Tabs

Two 16,000 BTU reverse cycle Marine Air units

Racor fuel Filtration.

Driplless Shaft Seals

3 Electric bilge pumps.

Electrical

Wired for both 12 volt DC and 120 Volt AC service. Westerbeke 7.6 Kw diesel generator provides ample power away from the dock.

12 VOLT:

Electrical panel with breakers

Volt meter

(2) 90 amp alternators

(2) 4D house batteries

(1) 8D engine start battery

(1) grp 24 generator start battery.

120 VOLT:

Switch panel with breakers

Volt and Amp meters

50 amp shore power inlet with 50 foot shore power cord.

Promatic 50 amp charger

Remote controlled spotlight.

Electronics

FURUNO 1833C/NT RADAR/GPS PLOTTER WITH 10.4" COLOR LCD SCREEN.

Furuno-BBG-GPS Antenna

Furuno Smart Sensor Depth/Speed/Water Temp/Log

C-map Charts

Simrad AP 22 Autopilot

Standard VHF/Hailer

Remote spotlight.

KVH M3 Trackvision

Exclusions

Owner's personal belongings.

Disclaimer

The Company offers the details of this vessel or yacht in good faith but cannot guarantee or warrant the accuracy of this information nor warrant the condition of the vessel. A buyer should instruct his representatives, agents, or his surveyors, to investigate such details as the buyer desires validated. This vessel or yacht is offered subject to prior sale, price change, or withdrawal without notice.

PHOTOS

Profile



Aft Deck



foredeck



windless



foredeck



Starboard side deck



Mast and equipment



Cockpit air conditioning



Helm electronics



Navnet



Galley ice maker



Undercounter refrigerator



Adler Barber chest refrigerator.



Princess gas stove and microwave



Salon



Salon aft



Master berth



Helm



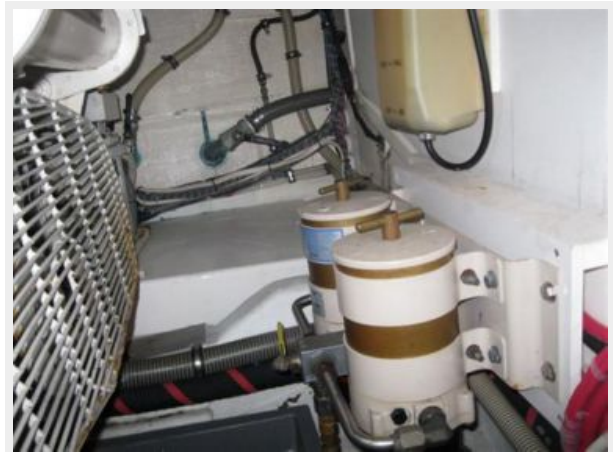
Port engine



filters port



filters starboard



Westerbeke 7.5 Kw



CONTACTS

Andrey Shestakov, leading yacht broker of the sales department of Shestakov Yacht Sales Inc. Shestakov Yacht Sales Inc., the official representative of the Miami/Fort Lauderdale FL headquarters.

Contact details

Email: andrey@shestakovyachtsales.com

Web: shestakovyachtsales.com/en/

Telephones

USA: +1(954)274-4435

Office hours

Monday – Saturday: **9:00 - 21:00** EDT

Sunday: **closed**

Address



Harbour Towne Marina, 850 NE 3rd St,
STE 213, Dania, FL 33004