

BOUNTIFUL — HI STAR



Builder: HI STAR

Year Built: 2003

Model: Motor Yacht

Price: PRICE ON APPLICATION

Location: United States

LOA: 47' 0" (14.33m)

Beam: 15' 0" (4.57m)

Max Draft: 3' 8" (1.12m)

Our experienced yacht broker, Andrey Shestakov, will help you choose and buy a yacht that best suits your needs **Bountiful — HI STAR** from our catalogue. Presently, at Shestakov Yacht Sales Inc., we have a wide variety of yachts available on our sale's list. We also work in close contact with all the big yacht manufacturers from all over the world.

If you would like to buy a yacht **Bountiful — HI STAR** or would like help answering any questions concerning purchasing, selling or chartering a yacht, please call **+1(954)274-4435**

TABLE OF CONTENTS

TABLE OF CONTENTS	2
SPECIFICATIONS	3
Overview	3
Basic Information	3
Dimensions	3
Speed, Capacities and Weight	3
Accommodations	3
Hull and Deck Information	4
Engine Information	4
DETAILED INFORMATION	5
OVERVIEW	5
Exclusions	6
Disclaimer	6
PHOTOS	7
CONTACTS	19
Contact details	19
Telephones	19
Office hours	19
Address	19

SPECIFICATIONS

Overview

OVERVIEW

The 2003 47' Hi Star, BOUNTIFUL, is in bristol condition. The current owner has updated all electronics, including adding a satellite TV system with High Def. All of the vessel systems including engines, generator and air conditioner have been recently serviced. This vessel is truly turn key and has always been maintained with an open checkbook policy.

Basic Information

Category: Motor Yacht

Sub Category: Flybridge

Model Year: 2003

Year Built: 2003

Country: United States

Fly Bridge: Yes

Dimensions

LOA: 47' 0" (14.33m)

Beam: 15' 0" (4.57m)

Max Draft: 3' 8" (1.12m)

Speed, Capacities and Weight

Displacement: 38000 Pounds

Water Capacity: 200 Gallons

Holding Tank: 50 Gallons

Fuel Capacity: 600 Gallons

Accommodations

Total Cabins: 2

Total Heads: 2

Hull and Deck Information

Hull Material: Fiberglass

Hull Color: White

Hull Designer: Hi Star

Engine Information

Engines: 2

Manufacturer: John Deere

Model: Power tech 8.1

Engine Type: Inboard

Fuel Type: Diesel

DETAILED INFORMATION

OVERVIEW

The 2003 47' Hi Star, BOUNTIFUL, is in bristol condition. The current owner has updated all electronics, including adding a satellite TV system with high definition. All of the vessel systems including engines, generator and air conditioner have been recently serviced. This vessel is truly turn key and has always been maintained with an open checkbook policy. SALON • Large entryway • Spacious salon area • Large forward windows • Sofa to port with end table • Coffee table • Bucket seating to starboard • Entertainment center to starboard • HD TV with Blue Ray player • Bose surround sound system • Central vacuum throughout • Custom window blinds • Teak & Holly sole • New carpet insert • Custom wood inlays throughout • Icom VHF new 2014 DINETTE, PORT • U-shape seating • Ultra leather (beige) • Teak table with in-lay • Drawer storage in table pedestal GALLEY • All teak cabinetry with in-lays • Granite counter tops • Stainless steel sink • Samsung microwave • Whirlpool refrigerator freezer • Princess stove combo • Ample storage & counter space • Teak & holly floor MASTER STATEROOM, FORWARD • Queen centerline • Curved cabinetry with in-lays • 2 large locker closets • Ample storage throughout • Storage under bed • Sharp flat screen TV with HD • Accent lights • Reading lights • Co2 & smoke detectors • Deck hatch with shade • Teak & Holly sole • Ensuite head MASTER HEAD • Techma head fresh & salt water • Granite counters • Mirrored ceiling • Walk in shower • Washer & dryer in wall cabinet GUEST STATEROOM, PORT • Full size berth • Night table with drawers • Flat screen TV • Locker closet • Port light • Accent lighting • Reading lights • Teak & Holly floor • Access door to head GUEST HEAD, PORT • Techma head fresh & salt water • Granite counters • Mirrored ceiling • Port light • Stand up shower • Tile floor • Access door to hallway HELM / ELECTRONICS • Garmin GPS 7212 with radar overlay, fish finder and weather • Raymarine Pathfinder RL80C - Radar 48 mile • Raymarine ST60 Digital depth • Raymarine fish finder L750 • Ray Auto Pilot - New • ACR Spotlight • All of the electronics have been updated and/or replaced in the last 2 years 2013-2014 • Icom 504 VHF - New • Compass • Trim tabs • Windless control • Glendenning synchronizers • Bow & stern thrusters • Intercom system • Fireboy system • Twin pedestal helm chairs • New Clarion stereo system with XM radio • New high definition SAT TV with three (3) receivers BRIDGE DECK • Spiral staircase to bridge • Hard top • Full eisenglass enclosure • Glass window insert at helm with wiper • Breaker panel • JVC stereo • L-seating to port with table • Settee to starboard with storage under • Wet bar • U-line refrigerator with icemaker • Chart table • Ladder to top of hard top • Large walkarounds with railings • 2 A/C units on bridge - New compressors and recent service work performed in 2014 • Bridge has its own independent 12 volt system isolated from the boat. Including independent battery and charger AFT DECK • Transom door • Aft engine controls with thrusters (Bow & Stern) • Spiral staircase to bridge • Hot & cold shower washdown • Engine room & lazarette access • Integrated swim platform • Tender lift • Clamp on rod holders • Underwater lights FOREDECK • Large walkarounds with high railings • Electric windless (maxwell) • Spot light • Bow cushions for sunning ENGINE ROOM / MECHANICAL • Twin John Deere power tech diesels 380 hp. Current hours 1,087 on both engines • Onan genset 13.5 kw 1,546 hours • Hydraulic engine controls • Oil change system • Racor filters with backups • Fiberglass battery boxes • 12V

inverter runs all banks at once • 20 gal hot water heater • A/C in engine room • Marine Aire A/C systems (4) • Easy access sea strainers • Intercom system • Large lazarette with electric hatch • Cablemaster • Sight glasses on all tankage • All engine and generator service work is up to date. Dec. 2014. • Batteries have been replaced with AGM batteries • New air septs • New driplless shaft seals • New Racor fuel / water separators • Transmissions serviced Dec 2014 • Forward bow thruster upgraded with new AGM battery

Exclusions

Owner's personal belongings.

Disclaimer

The Company offers the details of this vessel or yacht in good faith but cannot guarantee or warrant the accuracy of this information nor warrant the condition of the vessel. A buyer should instruct his representatives, agents, or his surveyors, to investigate such details as the buyer desires validated. This vessel or yacht is offered subject to prior sale, price change, or withdrawal without notice.

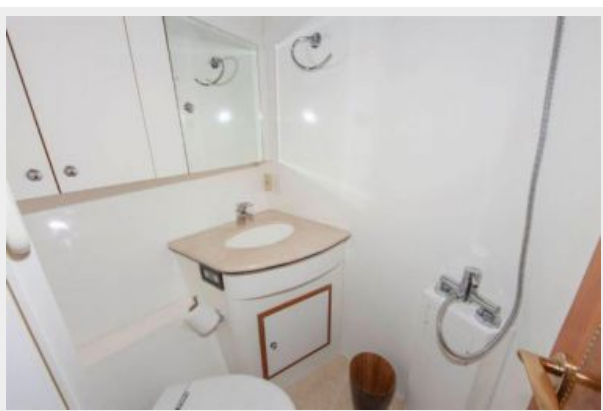
PHOTOS











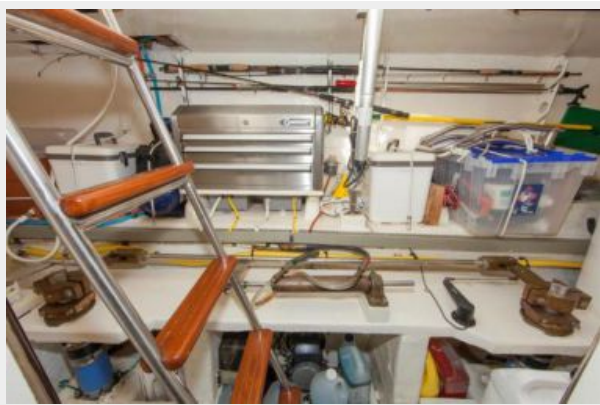














CONTACTS

Andrey Shestakov, leading yacht broker of the sales department of Shestakov Yacht Sales Inc. Shestakov Yacht Sales Inc., the official representative of the Miami/Fort Lauderdale FL headquarters.

Contact details

Email: andrey@shestakovyachtsales.com

Web: shestakovyachtsales.com/en/

Telephones

USA: +1(954)274-4435

Office hours

Monday – Saturday: **9:00 - 21:00** EDT

Sunday: **closed**

Address



Harbour Towne Marina, 850 NE 3rd St,
STE 213, Dania, FL 33004