

AESTIVATION — HATTERAS



Builder: HATTERAS

Year Built: 1989

Model: Motor Yacht

Price: PRICE ON APPLICATION

Location: United States

LOA: 80' 0" (24.38m)

Beam: 18' 2" (5.54m)

Max Draft: 5' 6" (1.68m)

Cruise Speed: 16 Kts. (18 MPH)

Max Speed: 20 Kts. (23 MPH)

Our experienced yacht broker, Andrey Shestakov, will help you choose and buy a yacht that best suits your needs **AESTIVATION — HATTERAS** from our catalogue. Presently, at Shestakov Yacht Sales Inc., we have a wide variety of yachts available on our sale's list. We also work in close contact with all the big yacht manufacturers from all over the world.

If you would like to buy a yacht **AESTIVATION — HATTERAS** or would like help answering any questions concerning purchasing, selling or chartering a yacht, please call **+1(954)274-4435**

TABLE OF CONTENTS

TABLE OF CONTENTS	2
SPECIFICATIONS	5
Overview	5
Basic Information	5
Dimensions	5
Speed, Capacities and Weight	5
Accommodations	5
Hull and Deck Information	6
Engine Information	6
DETAILED INFORMATION	7
Vessel Walkthrough	7
Exclusions	13
Disclaimer	13
PHOTOS	14
Aft Cockpit	14
Cockpit	14
Rear Cockpit Entry	14
Aft Seating	14
Salon	15
Dining Area of Salon	15
Galley	15
Settee Seating	15
GE 4 Burner Stove Range (2011)	16
GE Side-by-Side Water & Ice (2011)	16
Whirlpool Quiet Partner Dishwasher	16
Master Stateroom	16
Master Stateroom	17
Master Stateroom	17

Master Head	17
Master Walk-in Closet	17
VIP Stateroom	18
Guest Stateroom Head	18
Guest Stateroom Head	18
Guest Stateroom Head	18
Owner's Office	19
Washer & Dryer	19
Port Side	19
Helm	19
Flybridge Helm	20
Ample Flybridge Seating	20
17' Whaler Tender	20
17' Whaler Tender	20
Forward Port Storage Locker	21
High Handrail For Walkway	21
Bow	21
Bow	21
Bow	22
Engine Room	22
Engine Room	22
Engine Room	22
Onan 20kw Generator x 2	23
Engine Room	23
Sea Recovery Water Maker	23
CONTACTS	24
Contact details	24
Telephones	24
Office hours	24

Address

24

SPECIFICATIONS

Overview

She started life as a 70 motor yacht. A very clever extension was done in 1998. This made her a 80 with a beautiful covered aft deck, and a sensible sized cockpit. There is a large storage area under the aft deck. Aestivation is in very good condition. She is a very spacious boat with 4 staterooms, each with its own full bath. There is an office with the owner's suite below aft. A full beam walk in engine room. Engines and generators are in good shape. All engine maintenance is current. The other 3 staterooms are forward. The salon is spacious enough for a dining table and chairs The galley has new appliances.

Basic Information

Category: Motor Yacht

Model Year: 1989

Year Built: 1989

Country: United States

Dimensions

LOA: 80' 0" (24.38m)

LOD: 80' 0" (24.38m)

Beam: 18' 2" (5.54m)

Max Draft: 5' 6" (1.68m)

Speed, Capacities and Weight

Cruise Speed: 16 Kts. (18 MPH)

Cruise Speed RPM: 2000 Kts.

Max Speed: 20 Kts. (23 MPH)

Water Capacity: 250 Gallons

Fuel Capacity: 2090 Gallons

Accommodations

Total Cabins: 4

Total Berths: 4

Total Heads: 4

Hull and Deck Information

Hull Material: Fiberglass

Engine Information

Manufacturer: Detroit Diesel

Model: 12V92

Engine Type: Inboard

Fuel Type: Diesel

DETAILED INFORMATION

Vessel Walkthrough

Accommodations

Master stateroom is full beam. There is a walk in cedar lined closet. The spacious master head is to starboard.

Forward of the walk in closet to port is the owners office.

Full beam engine room is accessed in the companion way for the stateroom and office.

Salon area includes a comfortable dining table and chairs.

Aft of the salon is the aft deck with a patio table and chairs.

Down the lighted stairs from the aft deck is the cockpit.

Under the aft deck is a large storage area

Forward of the salon is the full galley (with updated appliances).

There is a settee to stbd across from the galley.

Forward of the galley is the pilothouse with lower helm.

To starboard there is a ladder/stairway to the top deck and upper helm.

To starboard in the pilothouse is the stairway down to the forward guest staterooms.

The mid-level guest stateroom and head are at the base of the stairs.

The Captain's. quarters/guest room with full head are forward.

The queen bed stateroom is Aft of the mid-level area. It also has a full head with walk in shower.

There are a stacked washer and dryer and large linen closet in the companion way storage area.

Flying Bridge Area

Upper helm with electronics

Twin Helm Chairs

Plexi windscreen

Bimini Top (new 2014)

Stereo and speaker system

Wet Bar with sink, fridge (new 2012), and storage.

Radar arch

Large u shaped seating area with removable cushions and storage under all benches

Large cocktail table

Marquipt Davit.(reconditioned in 2012, new cable and cylinders)

Boston Whaler 1998 17' center console

2 personal water craft cradles

Hatchway down to aft deck

Stairway down to pilot house

Aft Deck

A comfortable resting/entertaining area with patio table and four chairs.

Covered with overhead lighting

Ships bell is mounted here

Teak hand rails (all hand rails varnished 6/14)

Stairway (lighted) with hand rails down to the cockpit

Normal sized cockpit with room for hanging out or handling lines.

Large storage area under aft deck

Spare props in holders

Fend off poles for docking the center console off the swim platform

Transom door

Stern winch mounted center aft in cockpit

Storage area in floor of cockpit

Salon

Large L-shaped couch (completely rebuilt and recovered in 2012)

2 leather barrel chairs (new 2012)

End tables with lamps

All carpeting in the entire boat was replaced in 2012. It is in new condition with limited use.

Large Coffee table in front of couch

Forward in the salon is the dining table and chairs

Wet bar forward to port with bottle storage overhead

Scotsman ice-maker at the wet bar

Overhead lighting, accent lighting and dining table lighting

Salon air conditioning controlled via SMX digital controller

Entertainment equipment with TV, DVD player and stereo tuner are located in cabinets on the salon forward bulkhead.

Window treatments and wood louvre blinds on all salon windows

Large picture window looking aft out to the aft deck

Galley

Well laid out with plenty of space

Lots of storage above and below counter top

Under cabinet lighting

Overhead lighting

Opening windows with window treatments and wood louvre blinds.

Wine cooler

Whirlpool Dishwasher (new 2012)

GE 4 Burner Stove/range (new 2011)

GE Side-by-Side Water & Ice Refrigerator (new 2011)

Stainless steel microwave/convection oven with vent

Built in blender

6 person settee across from galley

Pilot House

Two person helm seat

Chart storage and cabinet storage under helm seat

Port and Starboard wing doors

Stairway to flying bridge

Lower helm with electronics

Hynautic engine and transmission controls

The ships main electrical control panels are here, including generator controls.

Port and starboard storage cabinets

Forward looking windshield with windshield wipers

Full windshield see through cover

Staterooms

Master Stateroom

Large queen bed with room to walk around

Large drawers and counter tops on port and starboard sides

Port and starboard night stands with reading lamps

Port and starboard port holes with window blinds

New carpeting

Large, walk in cedar lined closet

Air Conditioning controlled by a SMX II digital controller

Master head with shower/bath tub/shower lite

Vanity sink, mirror

Cabinet storage

Amtico flooring

Galley Maid toilet system

Guest #1

Lower level forward

Full head with shower stall, mirrors, sink, cabinet storage

Large double bed

Night stands with reading lights

New carpet

Drawer storage, counter tops and vanity mirror in bedroom

Guest # 2

Located forward mid-level

Two double beds with new linens and pillows

Double door storage cabinet between the beds

Drawer storage under the beds

Air conditioned

New carpeting

Full head across the companion way. This bathroom also doubles as a day powder room.

Guest # 3

Located forward.

Over under single bunks to starboard

Can be used for guests or Captain's Quarters

Full head with shower

Access to chain locker in forward bulkhead

Drawer storage for live-aboard or travel

Overhead hatch

New carpeting

Engine Room /Machinery

2 x 12V92 Detroit Diesel engines with 1290 hours

Fresh water pumps-110volt and 24 volt

Naiad Stabilizers

Fuel tank selector manifold

4 8D batteries

Battery Charger

Fuel transfers system

Electronics

** Some electronics are obsolete and are in place rather than open area*

Garmin 7215 at lower helm

Garmin 7212 at Upper helm

* Furuno 72 mile radar at lower helm

* Furuno 48 mile radar at upper helm

* Robertson AP 200 autopilot at both Helms

VHF radios at both helms

Compass at both helms

ICOM shortwave radio at lower helm

Aft view camera monitor

Hatteras systems monitor

Forward and aft docking light controls

Electrical/Generator Room

Located below mid level stateroom and head

Twin Onan 20kw generators in sound shields 2650 hrs/2700 hrs

Racor fuel filters

Spare parts for both generator and electrical

Sea Recovery Water Maker 1200 GPD

Shore line transformers

Spare tail shaft for running gear mounted to the generator room floor

All of the air conditioning compressors are located here

Exclusions

Owner's personal belongings.

Disclaimer

The Company offers the details of this vessel or yacht in good faith but cannot guarantee or warrant the accuracy of this information nor warrant the condition of the vessel. A buyer should instruct his representatives, agents, or his surveyors, to investigate such details as the buyer desires validated. This vessel or yacht is offered subject to prior sale, price change, or withdrawal without notice.

PHOTOS

Aft Cockpit



Cockpit



Rear Cockpit Entry



Aft Seating



Salon



Dining Area of Salon



Galley



Settee Seating



GE 4 Burner Stove Range (2011)



GE Side-by-Side Water & Ice (2011)



Whirlpool Quiet Partner Dishwasher



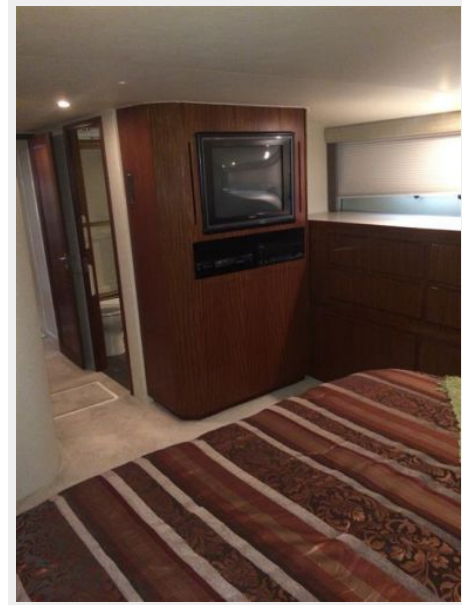
Master Stateroom



Master Stateroom



Master Stateroom



Master Head



Master Walk-in Closet



VIP Stateroom



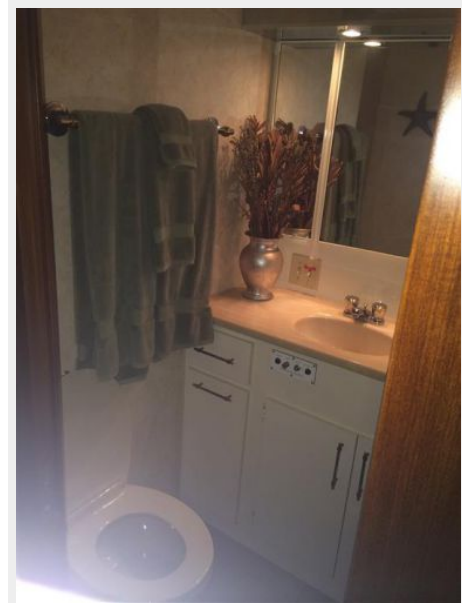
Guest Stateroom Head



Guest Stateroom Head



Guest Stateroom Head



Owner's Office



Washer & Dryer



Port Side



Helm



Ample Flybridge Seating



Flybridge Helm



17' Whaler Tender



17' Whaler Tender



Forward Port Storage Locker



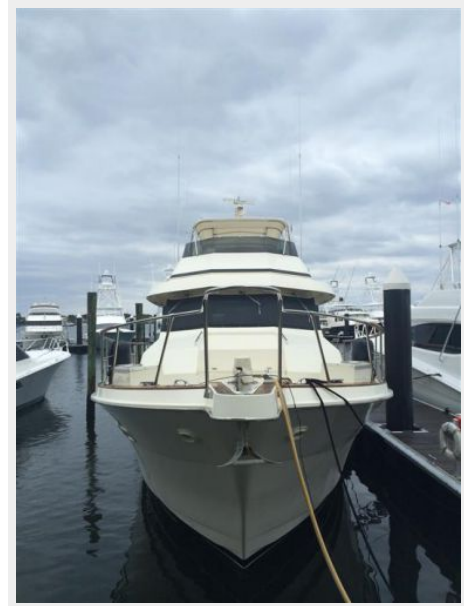
High Handrail For Walkway



Bow



Bow



Bow



Engine Room



Engine Room



Engine Room



Engine Room



Onan 20kw Generator x 2



Sea Recovery Water Maker



CONTACTS

Andrey Shestakov, leading yacht broker of the sales department of Shestakov Yacht Sales Inc. Shestakov Yacht Sales Inc., the official representative of the Miami/Fort Lauderdale FL headquarters.

Contact details

Email: andrey@shestakovyachtsales.com

Web: shestakovyachtsales.com/en/

Telephones

USA: +1(954)274-4435

Office hours

Monday – Saturday: **9:00 - 21:00** EDT

Sunday: **closed**

Address



Harbour Towne Marina, 850 NE 3rd St,
STE 213, Dania, FL 33004