

PAX PORT — DEFEVER



Builder: DEFEVER

Year Built: 1982

Model: Trawler

Price: PRICE ON APPLICATION

Location: United States

LOA: 44' 0" (13.41m)

Beam: 14' 9" (4.50m)

Max Draft: 4' 7" (1.40m)

Cruise Speed: 8 Kts. (9 MPH)

Max Speed: 10 Kts. (12 MPH)

Our experienced yacht broker, Andrey Shestakov, will help you choose and buy a yacht that best suits your needs **Pax Port — DEFEVER** from our catalogue. Presently, at Shestakov Yacht Sales Inc., we have a wide variety of yachts available on our sale's list. We also work in close contact with all the big yacht manufacturers from all over the world.

If you would like to buy a yacht **Pax Port — DEFEVER** or would like help answering any questions concerning purchasing, selling or chartering a yacht, please call **+1(954)274-4435**

TABLE OF CONTENTS

TABLE OF CONTENTS	2
SPECIFICATIONS	3
Basic Information	3
Dimensions	3
Speed, Capacities and Weight	3
Accommodations	3
Hull and Deck Information	3
Engine Information	4
DETAILED INFORMATION	5
Accommodations	5
Galley	5
Engines	5
Electronics	5
AC/DC Systems	6
Additional Information	6
Exclusions	7
Disclaimer	7
PHOTOS	8
CONTACTS	14
Contact details	14
Telephones	14
Office hours	14
Address	14

SPECIFICATIONS

Basic Information

Category: Trawler

Model Year: 1982

Year Built: 1982

Country: United States

Dimensions

LOA: 44' 0" (13.41m)

Beam: 14' 9" (4.50m)

Max Draft: 4' 7" (1.40m)

MFG Length: 43' 10" (13.36m)

Speed, Capacities and Weight

Cruise Speed: 8 Kts. (9 MPH)

Max Speed: 10 Kts. (12 MPH)

Displacement: 44000 Pounds

Water Capacity: 364 Gallons

Holding Tank: 40 Gallons

Fuel Capacity: 600 Gallons

Accommodations

Total Heads: 2

Hull and Deck Information

Hull Material: Fiberglass

Engine Information

Engines: 2

Manufacturer: Lehman

Model: 2715-E

Engine Type: Inboard

Fuel Type: Diesel

DETAILED INFORMATION

Accommodations

Guest stateroom is forward with single berths to port and starboard, with in suite head and engine room access. Aft up is a large open salon with lower helm to starboard and navigation table. To port is the settee and access to the port deck. Further aft is the galley with new Corian counters. Starboard of the galley is a custom made cabinet with built in Nova Kool refrigerator and U-Line ice maker. Large windows surround the entire salon, galley and helm area. Aft is the full width master, featuring an Island Queen with ample storage and walk-in closet that a washer/dryer could be installed. Port and forward is the master head with Corian counters and a stall shower.

Galley

- Nova Kool Refrigerator and Freezer
- Force 10 Stove and Oven
- U-Line Ice Maker
- Sanyo Microwave
- Corian Counter Tops
- Force 10 Engine and AC 11 Gallon Hot Water Heater

Engines

- Lehman 120HP engines with 2800 hours
- Yanmar 7.5 KW Generator
- Racor 900 Fuel Filters
- Speed Seal Impeller Covers on all Engines
- New main Engine Oil Coolers
- All Belts and Hoses Serviced
- Rebuilt Transmission
- Spare Heat Exchanger
- Oil Change System
- PYI Dripless Glands
- Soft Transmission Couplings
- New Fuel Tanks

Electronics

- Raymarine Tridata Speed Distance Depth System

- 24 Mile Furuno 1731 Radar
- Wagner Autopilot MP-320
- Raymarine Rudder Angle Indicator
- Raymarine Anemometer ST 60
- Azimuth Electronic Compass 1000
- AIS Receiver SR-161
- Standard Horizon VHF Radio
- Ram Mic At Flybridge Helm
- Garmin GPS 492
- Garmin GPS 162 on Flybridge
- Raymarine Tridata repeater on Flybridge
- Data Marine Depth Sounder LX-200

AC/DC Systems

- Yanmar 7.5KW 2QM20 Generator
- Heart Freedom 3KW Inverter/Charger
- Heart Link Monitor 2000-R
- Amptech 125 Amp Alternator
- West Marine 40 Amp Engine Start Charger
- 2 Group 31 Start Batteries
- 8 Trojan House Batteries 105
- New Battery Cases
- Spare Alternator
- Digital Tachometers
- Separate Charger and Battery at Flybridge for Tender Crane
- AC Isolater

Additional Information

- Walker Bay 10' Genesis Dingy
- 4 Stroke 8HP Yamaha Outboard
- 50 lbs. Main Anchor
- 300' Chain Rode
- 22lbs. Spare Anchor and Rode
- Power Up and Power Down DC Windlass
- Complete Aft Deck Enclosures
- 3 Sided Flybridge Enclosure with New Forward Panels
- New Bottom Paint
- Raw Water Filters Serviced
- New Shafts
- Bronze Sea Chest Components Serviced

Exclusions

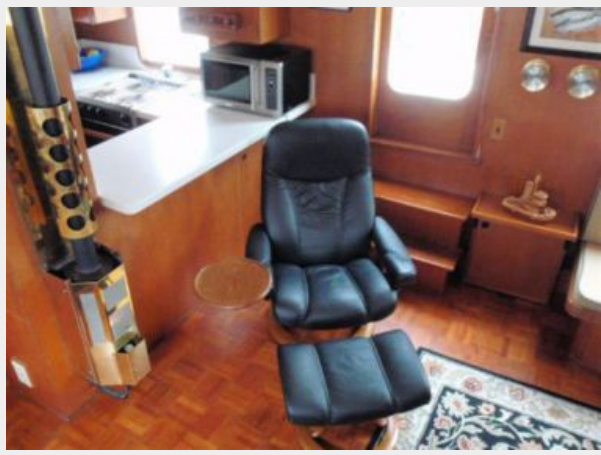
Owner's personal belongings.

Disclaimer

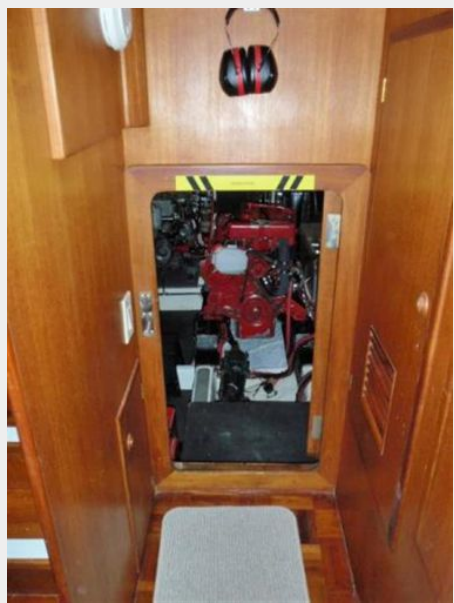
The Company offers the details of this vessel or yacht in good faith but cannot guarantee or warrant the accuracy of this information nor warrant the condition of the vessel. A buyer should instruct his representatives, agents, or his surveyors, to investigate such details as the buyer desires validated. This vessel or yacht is offered subject to prior sale, price change, or withdrawal without notice.

PHOTOS

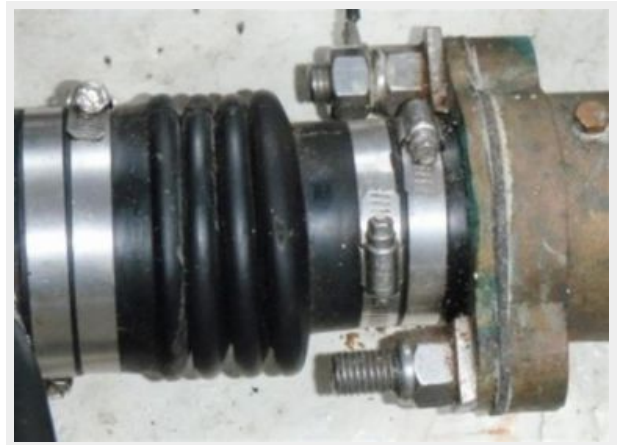












CONTACTS

Andrey Shestakov, leading yacht broker of the sales department of Shestakov Yacht Sales Inc. Shestakov Yacht Sales Inc., the official representative of the Miami/Fort Lauderdale FL headquarters.

Contact details

Email: andrey@shestakovyachtsales.com

Web: shestakovyachtsales.com/en/

Telephones

USA: +1(954)274-4435

Office hours

Monday – Saturday: **9:00 - 21:00** EDT

Sunday: **closed**

Address



Harbour Towne Marina, 850 NE 3rd St,
STE 213, Dania, FL 33004