

# 36FT 2005 SELENE OCEAN TRAWLER 36 — SELENE



**Builder:** SELENE

**LOA:** 36' 0" (10.97m)

**Year Built:** 2005

**Model:** Trawler

**Price:** PRICE ON APPLICATION

**Location:** United States

Our experienced yacht broker, Andrey Shestakov, will help you choose and buy a yacht that best suits your needs 36ft 2005 Selene Ocean Trawler 36 — SELENE from our catalogue. Presently, at Shestakov Yacht Sales Inc., we have a wide variety of yachts available on our sale's list. We also work in close contact with all the big yacht manufacturers from all over the world.

If you would like to buy a yacht 36ft 2005 Selene Ocean Trawler 36 — SELENE or would like help answering any questions concerning purchasing, selling or chartering a yacht, please call **+1(954)274-4435**

# TABLE OF CONTENTS

|   |    |
|---|----|
| TABLE OF CONTENTS                       | 2  |
| SPECIFICATIONS                          | 5  |
| Basic Information                       | 5  |
| Dimensions                              | 5  |
| Hull and Deck Information               | 5  |
| Engine Information                      | 5  |
| DETAILED INFORMATION                    | 6  |
| General layout & description            | 6  |
| Helm Electronics and Navigation systems | 6  |
| Salon & Galley                          | 7  |
| Master Stateroom and ensuite head       | 8  |
| Flybridge & Boat Deck                   | 9  |
| Main Deck & Cockpit                     | 10 |
| Mechanical, Electrical, and Plumbing    | 11 |
| Exclusions                              | 12 |
| Disclaimer                              | 12 |
| PHOTOS                                  | 14 |
| Bow                                     | 14 |
| Starboard                               | 14 |
| Dinette to starboard                    | 14 |
| Dinette to starboard                    | 14 |
| Open to add a leaf                      | 14 |
| Dinette opens to seat 5                 | 14 |
| Salon looking aft                       | 15 |
| Salon looking aft                       | 15 |
| Salon looking port aft                  | 15 |
| Salon looking port                      | 15 |
| Salon looking starboard                 | 15 |

|  |    |
|--|----|
| Salon looking forward                              | 15 |
| Salon looking forward                              | 16 |
| Helm   | 16 |
| Helm   | 16 |
| salon looking forward and to port                  | 16 |
| Galley to port                                     | 16 |
| Galley   | 16 |
| Master Stateroom looking aft                       | 17 |
| Master Stateroom- looking port                     | 17 |
| Master Stateroom looking aft                       | 17 |
| Master Stateroom- looking starboard                | 17 |
| Master head to port                                | 17 |
| Master Stateroom- looking forward                  | 17 |
| Master stateroom shower to starboard               | 18 |
| Master Stateroom- looking forward                  | 18 |
| Shower stall with engine room access               | 18 |
| Engine room entrance looking forward               | 18 |
| Engine room- Looking forward                       | 19 |
| Engine room looking down from open hatch           | 19 |
| Engine room- Looking aft                           | 19 |
| Fuel tank starboard with ESI Fuel polishing system | 19 |
| Engine room- Looking aft                           | 19 |
| Fuel management                                    | 20 |
| Engine room- Looking aft                           | 20 |
| Exhaust running to port with waterlift muffler     | 20 |
| looking aft from engine room entrance              | 20 |
| Guest Stateroom- Vee berth with filler             | 21 |
| Guest stateroom ensuite head                       | 21 |
| Flybridge helm                                     | 21 |

|  |    |
|--|----|
| Flybridge helm                               | 21 |
| Flybridge looking port                       | 21 |
| Flybridge looking forward                    | 21 |
| Aft deck looking forward                     | 22 |
| Mast with electronics                        | 22 |
| Aft deck with cockpit down three steps       | 22 |
| Aft deck with freezer, deckbox, and BBQ      | 22 |
| Bullfrog Tender                              | 22 |
| Bullfrog Tender with Honda outboard          | 22 |
| Bow pulpit with Anchor winch and Samson post | 23 |
| Bullfrog Tender                              | 23 |
| Port side                                    | 23 |
| Starboard bow                                | 23 |
| Stern  | 24 |
| Port side                                    | 24 |
| Ready to go cruising!!                       | 24 |
| CONTACTS                                     | 25 |
| Contact details                              | 25 |
| Telephones                                   | 25 |
| Office hours                                 | 25 |
| Address                                      | 25 |

---

# SPECIFICATIONS

---

## Basic Information

---

**Category:** Trawler

**Sub Category:** Aft Cabin

**Model Year:** 2005

**Year Built:** 2005

**Country:** United States

## Dimensions

---

**LOA:** 36' 0" (10.97m)

## Hull and Deck Information

---

**Hull Material:** Fiberglass

## Engine Information

---

**Manufacturer:** Not Applicable

**Fuel Type:** Diesel

# DETAILED INFORMATION

## General layout & description

**The Selene 36 is the perfect Coastal Cruiser for the family who demand safety, sea kindly handling and luxury.**

The Selene Archer 36' trawler offers an incredible amount of room. She measures close to 42' length overall from the bow to the stern! Her wide beam of 14'6 inches provides for both a wide salon and recessed safe side decks. Starting at the bow is the forward stateroom with ensuite head finished off with warm rich satin Teak. This stateroom features a large Vee-berth with filler cushion, clever sliding pocket door for privacy, and abundant storage throughout the stateroom. Up three steps is the very large main salon with a reverse raked windshield forward of the helm. The lower helm station has a pull out seat for two with excellent visibility forward. Directly behind the helm seat is the custom hiding leaf table that lowers to offer a third sleeping area. The galley with Corian counter top is along the port side with plenty of storage. Aft from the salon down three steps is the owners stateroom with walk around center line queen berth with an incredible amount of storage lockers and drawers. The ensuite master head with vanity is located to port with the huge shower located in the starboard forward corner with access thru to the engine room. The design of this vessel features a spacious stand up engine room with 360 degree access to the engine. The engine room can also be accessed through a floor hatch and ladder running to the forward portion of the space.

## Helm Electronics and Navigation systems

**Lower helm station** The lower helm has great sight lines and very little glare with the reverse rake windshield. There is a pilot seat that expands to offer comfortable seating for two. The Navigation Systems and Electronics were are high end and offer very dependable operation. Care was taken so that Pilothouse and Fly Bridge station are complimentary and have a logical layout of screens and controls. Systems include:

### Helm systems:

- Hynautic engine controls
- Hynautic hydraulic steering with traditional teak wheel
- Northern Lights- remote start and gauge set for generator
- Hurricane- Hydronicheating control panel

### Helm Electronics:

- Simrad DS54 Navigation station with: -GPS

- Hurricane- Hydronic system- Windshield defrosters
- VDO- Rudder angle indicator
- Selene 36' Safety Panel with E/R high water alarm
- Selene- Switch panel with Windshield Wiper/washer controls, horn, and light switches
- Muir- Anchor windlass control
- Wema- Tank level indicator
- Xantrex- Pathmaker control panel
- Xantrex- Link 20
- Outback- Inverter control
- Sidepower- Bow and Stern thruster control
- 12VDC Stereo with Eclipse speakers
- Chartplotter -Depth Sounder/Fishfinder -36 Mile Radar
- B&G- H1000 Instrument system with -Trip log -Depth sounder -Anemometer
- Simrad AP25- Autopilot w -AP21- Handheld remote -JP21 Remote plug -RPU160 Hydraulic drive
- ICOM IC-M604 Marine VHF radio
- Cummins Smartcraft engine display
- Furuno- GP32 GPS/ WAAS Navigation

### Flybridge Helm:

The Flybridge helm has two Todd helm seats and a nice compliment of electronics with a protective cover. There is also a smart addition of a map holder for paper charts, also with a protective cover. Electronics include:

- Simrad CX44 Navigation display repeats: -Chartplotter - Radar -Fishfinder
- Simrad JP21- Autopilot remote jack
- ICOM /remote VHF Marine radio w/DSC
- Sidepower Bow/Stern thruster controls
- Cummins Smartcraft display
- VDO- Rudder angle indicator
- Muir- windlass control
- 12VDC Outlet
- Horn switch

## Salon & Galley

**Salon** The salon has sliding door access to the side decks on both port and starboard sides. The galley runs along the port side and offers plenty of storage. The salon offers a huge settee to starboard that will convert into a double berth as well as expanding to a large table so seat up to 6.

- Large settee to starboard- finished in high
- Accent lights above windows

- grade leather
- Settee converts to adouble berth.
- Overhead teak handhold
- LCD- Flat screenTV
- Stereo system with 4 speakers
- Direct TV- satellite receiver
- Selene- Electrical distribution panel
- Cantalupi- Halogen overhead lighting
- "Cabin" Stainless steel readinglamps
- Storage under settee
- Remote mounted Engine and Generator switches
- Hydronic heating outletswith Thermostat
- Four large opening windows
- Bamboo "Levelor" blinds with accent curtains

## Galley

The Galley is to the port side of the Salon. The countertops give ample room for preparation for gourmet meals or simple snacks. There is plenty of storage so that everything can have its place.

- Tundra-T42AC refrigerator with freezer compartment
- Force 10- Three burner stainless steel stove w/ oven
- Large pantry drawers forward of stove
- GE-Stainless SteelMicrowave
- Corian countertops withsea-rail
- Franke- Doublestainless sink with Grohe faucet
- Hurricane- Hydronic heating- Thermostat
- Overhead cabinets (Custom addition)
- Xintex S-2A Propane control & detector
- GFCI 120VAC Plugs
- Tasklighting above countertop & cooktop
- Spacious Dish and tableware stowage

## Master Stateroom and ensuite head

The master stateroom is located aft with a queen size berth and has amazing amounts of storage throughout. The ensuite head is split with head and vanity to port and huge shower to starboard. Overall the stateroom is open and has plenty of light.

- Queen sized island berth w/ custom mattress
- (2) Hanging lockers- cedar lined
- Hydronic heating outlets with thermostat
- Cantalupi- Halogenoverhead lights
- Accent Lights
- Book shelves starboard and port sides
- "Lamp"reading lights
- Speakers and volume control
- Escape hatch with shade

### Ensuite Head:



- Corian countertop w/ built-in medicine cabinets above and storage below sink
- Grohe faucet with under mount sink.
- Hydronic heater outlet with high/low switch
- Halogen lights above mirror
- Overhead lighting
- Large Stainless steel portlight
- Tecma-Fresh water toilet

## Flybridge & Boat Deck

The Flybridge is enclosed with a beautiful canvas package that keeps this area warm, dry, and safe from the elements. The Fly Bridge itself is spacious and well laid out with excellent running visibility from the Todd helm seats. There is a custom Forespar mast providing a base for the ship's Radar and Sat-TV antennas. Just behind the mast is aft cabin deck top with plenty of space for gear. These areas feature:

- Centerline helm with electronics
- (2) Todd helm chairs
- L-shaped settee with FRP table
- Hynautic steering w/stainless steel destroyer wheel
- Forespar mast with heavy duty stainless steel stays and mounts for: -Simrad 36 mile Radome -KVH- Trac Vision Satellite TV -B&G Anemometer -Radar reflector -Boom and winch -Spreader lights
- Stern anchor line reel
- Chest freezer with canvas
- West marine S/S Barbeque
- Deck locker-locking
- Lifesling 2-Overboard rescue system
- Heavy duty bimini top with canvas and isinglass enclosure
- Nonskid decks
- Stainless steel safety rails
- Stainless steel Kayak rack
- Stern tie system
- 120VAC GFCI-Outlet

## Main Deck & Cockpit

The main deck & cockpit is safe and comfortable to walk around just like the rest of the outside spaces on the Selene Archer with non-skid decks, high bulwarks, and Stainless steel safety rails. The teak caprail is broad and magnificent with multiple coats of fresh varnish - nicely maintained. The cockpit is accessed by the wide swim step with swim ladder on center, There are side gates for ease of boarding or stepping to the dock to secure mooring lines. Forward of the pilothouse, the foredeck has plenty of space to launch and retrieve your anchor. Further features:

### Main Deck:

- Widedecks on port and starboard sides
- Courtesy & Step lights
- (3) Boarding gates
- Raised Anchor pulpit accommodates two anchors
- Muir-Cheetah 12VDC windlass w/ footswitch controls for up/down
- Delta- 44# Anchor with 400' 3/8 high test chain
- Fortress- 37# secondary anchor with 160' 5/16" Stainless steel chain and 350' rode
- Hose bib- Fresh and salt water chain washdown
- Stainless steel Samson post
- Canvas covers on the following: -Teak rails - Windlass cover

### Cockpit:

- Large FRP swimstep
- Transom Gate
- Storage cabinet - extra long for brushes or fishing gear
- Telescoping swim ladder -Deployable from the water
- Roskelley/Olsson Stern davit system
- Bullfrog 10' Yacht Tender -Honda 20HP outboard motor - Downrigger mounts
- Cockpit salt water washdown
- Outside deck shower
- Large Stainless Steel hawse cleats
- (2) Freeing ports
- (2) Stainless steel fishing rod holders
- Canvas for Tender

### Lazarette:

- Large lazarette hatch w/ hydraulic strut
- Sidepower Stern Thruster
- 12VDC lighting
- Hurricane Boiler for hydronic heating system
- Steering quadrant with: -Hynautic steering ram/reservoir - Autopilot pump and feedback

- Storage

## Mechanical, Electrical, and Plumbing

**Mechanical, Electrical, and Plumbing** Walking thru the master shower forward is the door to the engine room. The heavy duty door is made of stainless steel with latches that "dog" down to make it water tight.

### Mechanical:

Cummins QSB5.9 electronic controlled diesel engines are fresh water cooled through heat exchangers, and have an AIR-SEP filter that keeps the engine space clean. The engine has been professionally serviced and maintained on an annual basis and has only 1589 hours. The Mechanical systems include the following:

- Cummins QSB 5.9 Main engine -230 HP --ZF220- Transmission -Manual oil pres. & temp gauges on engine
- Northern Lights- 6kW Generator w/ remote start in ER & PH
- Water lift exhaust mufflers
- Racor 75/900FGX dual filter unit for main engine and single 500MA for generator
- ESI- Fuel polishing system with fuel management manifold
- Stainless steel- Fuel supply/return manifold with Racor coast guard approved hose.
- Fuel sight gauges- Magnetic
- Reverso- Oil change system
- Hynautic- Engine controls
- Hynautic- Hydraulic steering
- PYI- Shaft seal
- Aquamet 22- Stainless Steel shafts
- (2) FRP fuel tanks 300 Gallons each -S/S Inspection plates -Removable interior baffles -Dip tube fuel feed and return

### Electrical:

The Selene Ocean Trawler electrical system is known to be a robust design, complex in layout but remarkably friendly to use. These systems include:

- Xantrex- Link 20
- Pathmaker- Automatic battery combiner
- (1) Newmar Phase Three- Model PT 70a-12vDC

- Seleneelectrical distribution panel
- Northern Lights-6 kW genset -remote start/gauge panel in ER & pilothouse -Underwater exhaust with Air/waterseparator
- (1) AGM Group 31 Genset start Battery
- (1) 8D 12VDC Engine start battery
- (4)-AGM 20AmpHouse/inverter batteries
- Outback- VFX2812M 2800watt Inverter/charger
- battery charger
- 125/50Amp shore power connections fore and aft
- TV/Phone connection at bow
- AC voltmeter/Ammeter
- Galvanic isolator
- (2)Jabsco- Electric engine room blowers
- Sidepower Bow & Stern thruster system
- Windlass control panel and system

## Plumbing:

- Fresh water tank- 200 Gallons
- Flojet 2840-100Fresh water pump
- Surflo- Salt water pump
- Flojet- F/W accumulator tank
- Raritan- 12Gallon Marine Water Heater
- Cold water hose bib in engine room
- Rule- Bilge Pumps -Engine room- 3700 GPH -Commissary- 2000GPH - Companionway- 2000GPH -Bow Locker- 2000GPH
- HurricaneHydronic heating system -Heat exchanger for engine heat -All areas Individually controlled w/thermostats. -Heats domestic hot water
- Tecma Fresh water flush heads
- Jabsco- Macerator pump
- Holding tank
- Tank watcher 4- Holding tank indicator
- Whale gusher- Manual bilge pump- with manifold sourcing to: -Commissary -Engine room

## Exclusions

Owner's personal belongings.

## Disclaimer

The Company offers the details of this vessel or yacht in good faith but cannot guarantee or warrant the accuracy of this information nor warrant the condition of the vessel. A buyer should instruct his representatives, agents, or his surveyors, to investigate such details as the buyer

desires validated. This vessel or yacht is offered subject to prior sale, price change, or withdrawal without notice.

# PHOTOS

**Bow**



**Starboard**



**Dinette to starboard**



**Dinette to starboard**



**Open to add a leaf**



**Dinette opens to seat 5**



Salon looking aft



Salon looking aft



Salon looking port aft



Salon looking port



Salon looking starboard



Salon looking forward



**Salon looking forward**



**Helm**



**Helm**



**salon looking forward and to port**



**Galley to port**



**Galley**





**Master Stateroom looking aft**



**Master Stateroom- looking port**



**Master Stateroom looking aft**



**Master Stateroom- looking starboard**



**Master Stateroom- looking forward**



**Master head to port**



### Master stateroom shower to starboard



### Master Stateroom- looking forward



### Shower stall with engine room access



### Engine room entrance looking forward



**Engine room- Looking forward**



**Engine room looking down from open hatch**



**Engine room- Looking aft**



**Fuel tank starboard with ESI Fuel polishing system**



**Engine room- Looking aft**



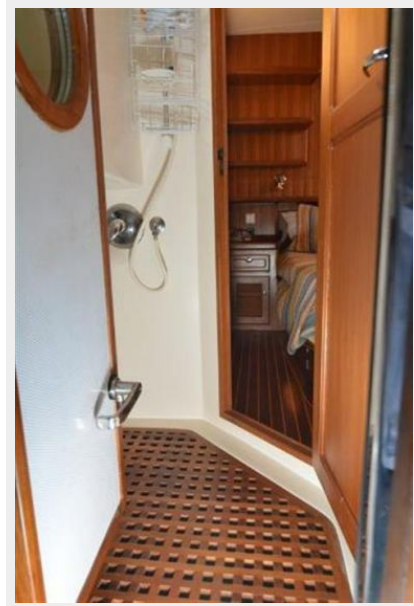
### Fuel management

Engine room- Looking aft



Exhaust running to port with waterlift muffler

looking aft from engine room entrance



**Guest Stateroom- Vee berth with filler**



**Guest stateroom ensuite head**



**Flybridge helm**



**Flybridge helm**



**Flybridge looking port**



**Flybridge looking forward**



**Aft deck looking forward**



**Mast with electronics**



**Aft deck with cockpit down three steps**



**Aft deck with freezer, deckbox, and BBQ**



**Bullfrog Tender**

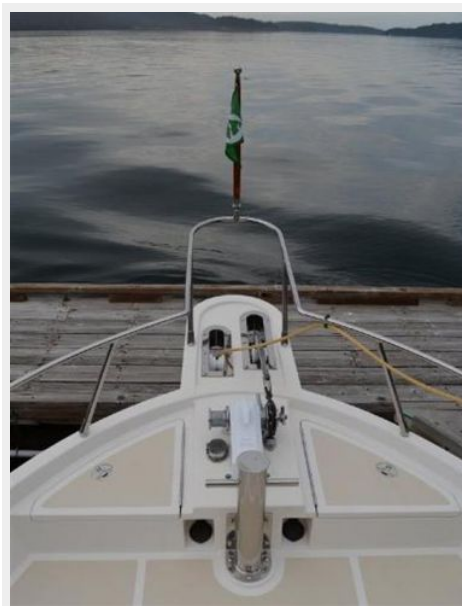


**Bullfrog Tender with Honda outboard**



### Bow pulpit with Anchor winch and Samson post

### Bullfrog Tender



### Port side



### Starboard bow



**Stern**



**Port side**



**Ready to go cruising!!**





# CONTACTS

---

Andrey Shestakov, leading yacht broker of the sales department of Shestakov Yacht Sales Inc. Shestakov Yacht Sales Inc., the official representative of the Miami/Fort Lauderdale FL headquarters.

## Contact details

---

Email: [andrey@shestakovyachtsales.com](mailto:andrey@shestakovyachtsales.com)

Web: [shestakovyachtsales.com/en/](http://shestakovyachtsales.com/en/)

## Telephones

---

USA: +1(954)274-4435

## Office hours

---

Monday – Saturday: **9:00 - 21:00** EDT

Sunday: **closed**

## Address

---



Harbour Towne Marina, 850 NE 3rd St,  
STE 213, Dania, FL 33004