

## 43FT 2005 SELENE OCEAN TRAWLER — SELENE



**Судостроитель:** SELENE

**Год постройки:** 2005

**Модель:** Траулер

**Цена:** ЦЕНА ЯХТЫ ПО ЗАПРОСУ

**Местонахождение:** United States

**Длина общая:** 43' 0" (13.11m)

**Ширина:** 15' 8" (4.78m)

**Мин. осадка:** 5' 0" (1.52m)

**Крейс. скорость:** 8 Kts. (9 MPH)

**Макс. скорость:** 11 Kts. (13 MPH)

Купить 43ft 2005 Selene Ocean Trawler — SELENE а также выбрать подходящую вам яхту из нашего каталога яхт вам поможет опытный яхтенный брокер Андрей Шестаков. На сегодняшний день компания Shestakov Yacht Sales Inc. имеет большое количество яхт в собственном списке продаж, а также тесно сотрудничает со всеми крупными яхтенными производителями по всему миру. Для того чтобы купить яхту 43ft 2005 Selene Ocean Trawler — SELENE а также проконсультироваться по любому вопросу связанному с покупкой, продажей, чартером яхт позвоните по телефону **+7(918)465-66-44**.

# ОГЛАВЛЕНИЕ

ОГЛАВЛЕНИЕ	2
ХАРАКТЕРИСТИКИ	5
Основная информация	5
Размеры	5
Скорость, вместимость и масса	5
Размещение	5
Корпус и палуба	5
Информация о двигателе	6
ПОДРОБНОЕ ОПИСАНИЕ	7
"C Otter"- Description	7
Salon & Galley	7
Pilothouse	8
Electronics & Navigation systems	9
Master Stateroom and ensuite head	11
Guest Stateroom & head	12
Fly Bridge and Boat Deck	12
Main Deck, Cockpit, & Lazarette	13
Mechanical, Electrical, and Plumbing	14
Исключения	16
Отказ от ответственности	16
ФОТОГРАФИИ	17
Port side at dock	17
Pilothouse	17
Port side at dock	17
Saloon looking forward	17
saloon looking port aft	17
L shaped settee with hide a leaf table	18
Saloon looking forward	18

Galley	18
Galley looking starboard	18
Galley	18
Saloon looking aft	18
Pilothouse	19
Pilothouse looking starboard	19
Pilothouse looking port	19
Helm Settee	19
Selene electrical distribution panel	19
Pilothouse looking aft	19
Companionway looking forward	20
Companionway looking port aft	20
Master Stateroom	20
Master Stateroom- looking port	20
Master Stateroom- looking starboard	20
Companionway looking port	20
Engine room- looking to port	21
Engine room- Looking aft	21
Engine room- Looking aft	21
Fuel management	21
Flybridge looking forward	21
Flybridge looking starboard	21
Flybridge helm	22
Boat deck- looking aft	22
Bimini and Mast	22
Boat deck- looking forward	22
Starboard side deck	23
Looking forward to foredeck	23
C Otter	23

---

КОНТАКТЫ	25
-----	-----
Контактная информация	25
-----	-----
Телефоны	25
-----	-----
Время работы	25
-----	-----
Адрес	25
-----	-----

# ХАРАКТЕРИСТИКИ

## Основная информация

Тип судна: Траулер

Модельный год: 2005

Год постройки: 2005

Страна: United States

## Размеры

Длина общая: 43' 0" (13.11m)

Длина по ватерлинии: 42' 4" (12.90m)

Ширина: 15' 8" (4.78m)

Мин. осадка: 5' 0" (1.52m)

## Скорость, вместимость и масса

Крейс. скорость: 8 Kts. (9 MPH)

Макс. скорость: 11 Kts. (13 MPH)

Вместимость воды: 300 Gallons

Вместимость сточного бака: 60 Gallons

Объем топливного бака: 1200 Gallons

## Размещение

Всего кают: 2

Всего коек: 4

Всего ком. состава: 2

## Корпус и палуба

Материал корпуса: Fiberglass

## Информация о двигателе

---

**Двигатели:** 1

**Производитель:** Cummins

**Модель:** QSB 5.9L

**Тип двигателя:** Inboard

**Тип топлива:** Diesel

---

# ПОДРОБНОЕ ОПИСАНИЕ

---

## "C Otter"- Description

---

C Otter is the nicest example of the updated Selene 43 design that I have ever seen!

Stepping aboard the swim platform, supported by the factory hull extension, you immediately notice the stability afforded by this seaworthy hull design. Walking forward through a heavy duty transom gate is a large cockpit with room for sitting and relaxing or even fishing. You can safely walk up either side of the boat to either disembark through thoughtful side gates or easily walk forward to the Pilothouse all while being protected by high bulwarks and a Portuguese bridge.

Forward from the Cockpit through a Diamond Sea Glaze- Dutch door, you are met with a warm and inviting design by the owner and designer of the Selene Ocean Trawler line, Howard Chen. Careful thought and care was put into this yachts interior from her fine teak joinery to her well appointed leather upholstery. Systems are just plain incredible. Redundancy comes to mind when going over the impressive electronics inventory.

The current owner has made impressive refinements on the original to make her one of the best yachts for Northwest cruising.

## Salon & Galley

---

### Salon

Walking forward from the cockpit you effortlessly walk right into the Saloon through a centerline Diamond Sea Glaze Dutch door. To port just inside is a nicely appointed settee with an exceptional "Hide a leaf" teak table. Across to starboard are two teak frame chairs with entertainment system just forward. Selene also has their signature Commissary below the deck just forward of the saloon door.

- Large settee to port- finished in high grade leather
- Settee converts to a single berth.
- Two Teak frame chairs with leather cushions
- Overhead teak handhold
- Panasonic VIERA- Flat screenTV
- Bose321 Stereo system with speakers and subwoofer
- Direct TV- satellite receiver
- Speakers and Volume control
- LEDoverhead lighting
- Accent lights above windows
- "Cabin" Stainless steel readinglamps
- Storage under settee
- Remote mounted Engine and Generator switches
- Hydronic heating outletswith Thermostat
- Four large opening windows
- Bamboo "Levelor" blinds with accent curtains.

## Galley

The Galley is forward and to the starboard side of the Salon. The countertops give ample room for preparation for gourmet meals or simple snacks. There is plenty of storage so that everything can have its place.

- Sea Freeze- Extra large refrigerator with remote compressor
- Force 10- Three burner stainless steel stove w/ oven
- Large pantry drawers forward of stove
- GE-Stainless Steel Spacemaker Microwave
- Corian tops with stainless steel backsplash & sea-rail
- Franke- Double stainless sink with Grohe faucet
- Overhead cabinets (Custom addition)
- Acurite- Remote Temperature gauge for refrigerator and freezer
- Xintex S-2A Propane control & detector
- GFCI 120VAC Plugs
- Tasklighting above countertop & cooktop
- LEDlights in overhead
- Spacious Dish and tableware stowage

## Commissary

- Grunert holding plate freezer
- Wine storage rack
- Storage cabinets for dry goods
- Outback Inverter

## Pilothouse

The Pilothouse is up four steps from the saloon and features incredible visibility. The helm station is designed so that the captain can take command of all systems and still entertain and enjoy friends and guests while underway. Features include:

- Diamond Sea Glaze- Pilothouse Dutchdoors opening onto side decks
- Raised Settee with leather upholstery and teak table
- Teak foot rest with storage
- Pilot watch berth extends to 6' length
- SeaTel Sat TV control panel
- CCTV remote controls for: -Aft camera Pan-Tilt-Zoom - Engine room #1- fixed -Engine room #2- fixed -Engine room #3- fixed
- Selene Mimic panel w/ -Bilge pump switches and



- Hynautic Steering w/traditional teak steering wheel
- Chart table-Pull outwith storage drawers above & chartlight
- Teak grab rails overhead
- Cummins Smartcraft digital and analog gauges
- Northern Lights- Remote panel with gauges
- Hynautic- Hydraulicengine controls
- Sidepower- Bow/Stern thruster control
- ACR- Spotlight control
- Naiad- Stabilizer controls
- Wema- Fluid level gauges
- VDO Rudder angle indicator
- Seafire- remote panel
- visual -Engine room high water alarm
- MUIR- Anchor windlass control with up/down switch
- (2)Survival Suits- His andHers
- Ritchie- compass
- Pantograph windshield wipers, washers&controls
- Ocean Air- Overhead screen/shade
- HRO- Watermaker controls
- Alpine stereo with speakers throughout
- Niles speakers and volume control
- Heating and defroster controls and outlets
- Exterior lighting control -Spreader lights -Anchor light - Running light
- Outback Inverter control panel
- 12VDC & 120VACoutlets
- Temperature, Clock, & Barometer

## Electronics & Navigation systems

The Nav Systems and Electronics were chosen and layed out for ease of use and dependable operation. Care was taken so that Pilothouse and Fly Bridge station are complimentary and have a logical layout of screens and controls.

### Pilothouse:

- Airmar- Anemometer & weather information
- Furuno-FI501 Instrument-Wind direction display
- Furuno-FI50 Instrument-Digital Data

- Main Navigation- Furuno Black box system w/ -Radar, Chartplotter & Fishfinder -Black box control panel -(2) Furuno MU 19" Monitors - Furuno 6kW64 mile Digital array -Sirius satellite Weather receiver - Remote camera/TV/DVD input -Canada, Hawaii,Gulf Mexico, and CaribbeanCharts
  - Secondary Navigation- Furuno NavNet Vx2 1734C system w/ -Radar, plotter -Cmap cartography -Furuno 4kW 36 mile Radome
  - Dell Laptop with Nobeltec Navigation suite w/ -dedicated GPS - Nobeltec AIS
  - Simrad AP25- Autopilot w/ -AP21- Handheld remote -JP21 Remote plug -RPU160 Hydraulic drive
- Display
  - ICOM IC-604 VHF marine radio w/DSC
  - ICOM IC-504 VHF marine radio w/DSC
  - SR- AIS- Class B w/send function switched for privacy
  - WxWorx system
  - Simrad EQ33- Echosounder
  - SeaTel- 1898 Satellite Stabilized TV dome and receiver
  - Cummins Smartcraft display
  - VDO- Rudder angleindicator
  - Ritchie compass

## Upper Helm:

The Flybridge helm has two Todd helm seats and a nice compliment of electronics with a protective cover. There is also a smart addition of a map holder for paper charts, also with a protective cover. Electronics include:

- Furuno NavNet MU 8.4" High Def. display repeats: - Chartplotter -Radar -Fishfinde
- Furuno FI-50 Instrument- Digital Data Display
- Cummins Smartcraft display
- Naiad stabilizer control
- VDO- Rudder angle

- Simrad JP21- Autopilot remote jack
- ICOM IC-M502VHF Marine radio w/DSC
- Sidepower Bow/Stern thruster controls

- indicator
- Muir- windlass control
- 12VDC Outlet
- Horn switch

## Master Stateroom and ensuite head

The master stateroom is located forward with a queen size berth and is easily the most quiet and relaxing areas on this yacht. The ensuite head is to starboard and has plenty of light, heat and a bath tub. Under the berth is the bow thruster locker which is sealed off with a hatch providing a water tight compartment.

- Queen sized island berth w/ custom innerspring mattress
- Furuno-FI50 Instrument- Digital Data Display
- (2) Hanging lockers- cedar lined w/ heated loops
- Hydronic heating outlets with thermostat
- LEDoverhead lights
- (4) Large stainless steel portlights with screens
- Accent Lights
- Book shelves starboard and port sides
- "Lamp"reading lights
- Panasonic 13" LDC- TV
- Niles speakers and volume control
- Escape hatch with Ocean Air screen/shade

### Ensuite Head:

- Corian countertop w/ built-in medicinecabinets above and storage belowsink
- Grohe faucet with under mount sink.
- Large Bath tub with Grohe faucet.
- Heated towel bar
- Hydronic heater outlet with high/low switch
- LCD- lights above mirror
- LCD- Overhead lighting
- Large Stainless steel portlights
- Tecma-Fresh water toilet
- Tank watch 4

### Bow Thruster locker

- Side Power SP155TC- 8hp Bow Thruster
- 12VDC lighting on auto switch
- Water tight lid
- Bilge pump w/ automatic switch

## Guest Stateroom & head

---

Just down three steps from the Salon to port is the companionway to the staterooms. The Guest stateroom is very comfortable. The custom folding door allows for a very open companionway or closes to provide nice private accommodations. Your guests will be comfortable in over under bunks with the lower extendable with a 12" insert.

- Over underberths w/ custom mattress'
- Hanging locker- cedar lined
- Hydronic heating outlets with Thermostat
- LEDoverhead lights
- "Lamp"reading lights
- Large stainless steel portlights
- Hanging locker- cedar lined w/ heated loop

### Guest Head:

- Corian countertop w/ built-in medicinecabinets above and storage belowsink
- Grohe faucet with under mount sink.
- Shower with Grohe fixture.
- Heated towel bar
- LED-lights above mirror
- LED- Overhead lighting
- Large Stainless steel portlights
- Tecma-Fresh water toilet
- Hydronic heat outlet with high/low switch

## Fly Bridge and Boat Deck

---

The Fly Bridge is spacious and well laid out with excellent running visibility from the Todd helm seats. There is a custom Forespar mast providing a base for the ship's Radar antennas. Aft of the mast is plenty of space for the AB tender the is easily launched with the new Steelhead davit. Features:

- Centerline helm with electronics
- (2) Todd helm chairs
- Hynautic steering w/stainless steel destroyer wheel
- 10' AB tender with Honda 20HP outboard and Uni-helm
- Custom tender chocks

- Forespar mast with heavy duty stainless steel stays.
- Spreader lights
- Steelhead- ES1000- Davit with remote control
- Reversible settee with storage
- West marine S/S Barbeque
- McMurdo- G5 406GPS EPIRB
- Lifesling 2- Overboard rescue system
- Heavy dutybimini top
- (3)Kayak racks
- Nonskid decks
- Stainless steel safety rails
- Stern tie system
- Canvas covers for: -Helm -Tender -Settee - BBQ -Name boards
- 120VAC GFCI- Outlet

## Main Deck, Cockpit, & Lazarette

The Cockpit is spacious and intimate to the ocean around, and, like all outside spaces on the Selene, it is safe and secure with non-skid decks, high bulwarks, and Stainless steel safety rails. The teak caprail, clear of any fittings, is broad and magnificent with multiple coats of fresh varnish - perfectly maintained. The cockpit is accessed by the wide swim step with swim ladder on center, There are side gates for ease of boarding or stepping to the dock to secure mooring lines. Forward of the pilothouse and just aft of the Portuguese bridge is nice padded seating. The foredeck has plenty of space to launch and retrieve your anchor. Further features:

### Main Deck:

- Wide covered decks aft
- Portuguese bridge with FRP door
- Courtesy & Step lights
- (3) Boarding gates
- (8)Fender Chocks
- Raised Anchor pulpit accommodates two anchors
- Muir-Cheetah24VDC windlass w/ footswitch controls for up/down
- 400' 38 high test chain
- Rocna- Anchor 40kg.
- Fortress- Lunch hook anchor with chain and rode
- Hose bib- Fresh and salt water Chain washdown
- Stainless steel Samson post
- Canvas covers on the following: -Teak rails - Portuguese seating -Windlass cover

**Cockpit:**

- LargeFRP swimstep
- Transom Gate
- Storage cabinet with Corian countertop and teak doors
- Telescoping swim ladder -Deployable from the water
- (2) Staple rails
- (2) Pop up cleats
- Cockpit salt water washdown
- LED overhead lighting
- Pan, Tilt, Zoom Camera
- Outside deck shower
- Large Stainless Steel hawse cleats
- (2) Freeing ports
- Canvas for storage cabinet

**Lazarette:**

- Large lazarette hatch on hydraulic struts
- Sidepower SP155TC- 8hp Stern Thruster
- 12VDC lighting
- Storage
- Kabola Boiler for hydronic heating system
- Steering quadrant with: -Hynautic steering ram/reservoir - Autopilot pump and feedback
- HRO watermaker access
- Grunert compressor access

## Mechanical, Electrical, and Plumbing

---

Facing aft in the Companionway is the door to the engine room. The heavy duty door is made of stainless steel with latches that "dog" down to make it water tight.

**Mechanical:**

Cummins QSB5.9 electronic controlled diesel engines are fresh water cooled through heat exchangers, and have an AIR-SEP filter that keeps the engine space clean. The engine has been professionally serviced and maintained on an annual basis and have only 589 hours. The owner had custom stainless steel guard around the engine for extra security when moving around the engine space. The Mechanical systems include the following:

- Cummins QSB 5.9 Main engine -305 HP -Custom S/S alternator beltguard - ZF220- Transmission
- Northern Lights- 8kW Generator w/ remote start in ER & PH
- Water lift exhaustmufflers
- Racor dual filter units forboth main
- Naiad 252 Stabilizers /9Sq. Ft Fins -New electronic system -Kelp cutters -Parker- Hydraulic pump for stabilizers
- Hynautic- Engine controls
- Hynautic- Hydraulic steering
- PYI- Shaft seal

- engine and generator
- ESI- Fuel polishing system with fuel management manifold
- Fuel supply/return manifold
- Fuel sight gauges- Magnetic
- Reverso- Oil change system
- Aquamet 22- Stainless Steel shafts
- Spurs- Model F- Line cutters
- (2) FRP fuel tanks 550 Gallons each -S/S
- Inspection plates -Removable interior baffles -
- Dip tube fuel feed and return

### Electrical:

The Selene Ocean Trawler electrical system is known to be a robust design, complex in layout but remarkably friendly to use. The owner has carefully had these systems upgraded to meet his cruising needs. These systems include:

- Selene electrical distribution panel
- Northern Lights- 8 kW genset -remote start/gauge panel in ER & pilothouse -Underwater exhaust with Air/water separator
- Balmar- 210 amp High output alternator
- Balmar- Max charge voltage regulator
- (1) AGM Group 31 Genset start Battery
- (1) 8D 12VDC Engine start battery
- Outback- VFX2812M 2800watt Inverter/charger
- Link 2000 interface
- Pathmaker- Automatic battery combiner
- (6)Energy 1-AGM 220AmpHouse/inverter batteries
- (1) Professional Mariner Promatic24/20 12vDC battery charger
- 125/50Amp shore power connections fore and aft
- TV/Phone connection at bow
- AC voltmeter/Ammeter
- Galvanic isolator
- Windlass control panel and system

### Plumbing:

- Fresh water tank- 300 Gallons
- Johnson- WPS5.2 Fresh water pump
- Johnson- WD 5.2- Salt water pump
- Groco- F/W accumulator tank
- Kabola Hydronic heating system -Pex tubing for ultimate reliability -Heat exchanger for engine heat - All areas Individually controlled w/thermostats. -

- Torrid S/S Marine Water Heater
- Hot and Cold water hose bib in engine room
- HRO Seafari Escape 400 GPD watermaker
- Rule- Bilge Pumps -Engine room- 3700 GPH -Commissary- 2000GPH -Companionway- 2000GPH -Bow Locker- 2000GPH
- Closet loops -Heats domestic hot water
- Tecma Fresh water flush heads
- Sealand- Macerator pump
- Holding tanks
- Tank watcher 4- Holding tank indicator
- Whale gusher- Manual bilge pump- with manifold sourcing to: -Commissary -Engine room - Companionway bilge

---

## Исключения

При продаже яхты исключаются личные вещи владельца.

---

## Отказ от ответственности

Компания предоставляет описание судна или яхты добросовестно, но не может гарантировать точность этой информации, а также не ручается за техническое состояние. Покупатель должен проинструктировать своих агентов или оценщиков исследовать представленную информацию более подробно, по собственному желанию. Продажа судна или яхты, изменение цены или снятие с продажи будет происходить без предварительного уведомления.



# ФОТОГРАФИИ



Port side at dock



Saloon looking forward



Port side at dock



Pilothouse



saloon looking port aft



**L shaped settee with hide a leaf table**



**Saloon looking forward**



**Galley**



**Galley looking starboard**



**Galley**



**Saloon looking aft**



**Pilothouse**



**Pilothouse looking starboard**



**Pilothouse looking port**



**Helm Settee**



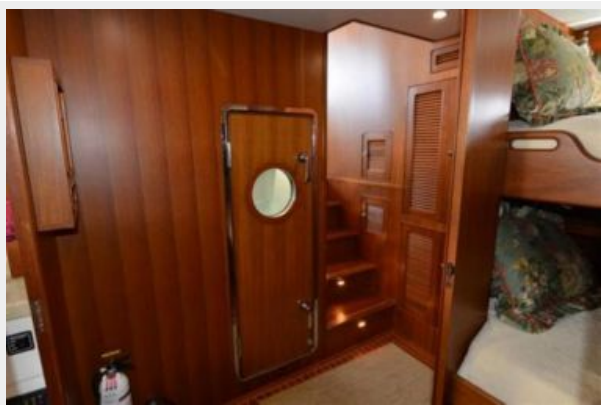
**Selene electrical distribution panel**



**Pilothouse looking aft**



**Companionway looking port aft**



**Companionway looking forward**



**Master Stateroom**



**Master Stateroom- looking port**



**Master Stateroom- looking starboard**



**Companionway looking port**



**Engine room- looking to port**



**Engine room- Looking aft**



**Engine room- Looking aft**



**Fuel management**



**Flybridge looking forward**



**Flybridge looking starboard**



**Flybridge helm**



**Boat deck- looking aft**



**Bimini and Mast**



**Boat deck- looking forward**



Looking forward to foredeck



Starboard side deck



C Otter







# КОНТАКТЫ

---

Андрей Шестаков (Andrey Shestakov) – ведущий яхтенный брокер отдела продаж яхт и судов компании Shestakov Yacht Sales Inc. Официальный представитель Shestakov Yacht Sales Inc. для русскоговорящих клиентов в центральном офисе компании в Майами/Форт Лодердейл/Флорида/США.

## Контактная информация

---

Email: [andrey@shestakovyachtsales.com](mailto:andrey@shestakovyachtsales.com)

Web: [shestakovyachtsales.com](http://shestakovyachtsales.com)

## Телефоны

---

Краснодарский край: **+7(918)465-66-44**

США, Майами, Флорида: **+1(954)274-4435**

## Время работы

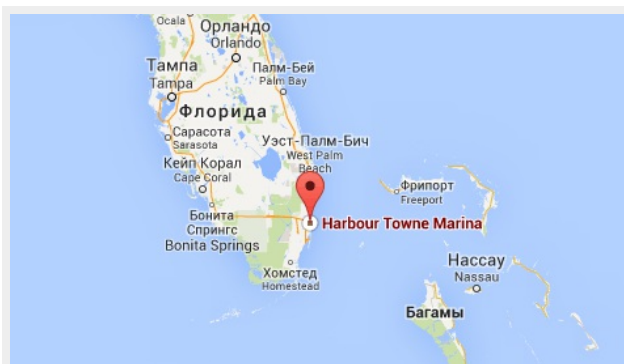
---

Понедельник – Суббота: **9:00 - 21:00**  
EDT

Воскресенье: **Закрето**

## Адрес

---



Harbour Towne Marina, 850 NE 3rd St,  
STE 213, Dania, FL 33004