

OUR BOAT — AZIMUT



Builder: AZIMUT

Year Built: 2002

Model: Motor Yacht

Price: PRICE ON APPLICATION

Location: United States

LOA: 43' 4" (13.21m)

Beam: 14' 6" (4.42m)

Max Draft: 3' 5" (1.04m)

Cruise Speed: 28 Kts. (32 MPH)

Max Speed: 32 Kts. (37 MPH)

Our experienced yacht broker, Andrey Shestakov, will help you choose and buy a yacht that best suits your needs **Our Boat — AZIMUT** from our catalogue. Presently, at Shestakov Yacht Sales Inc., we have a wide variety of yachts available on our sale's list. We also work in close contact with all the big yacht manufacturers from all over the world.

If you would like to buy a yacht **Our Boat — AZIMUT** or would like help answering any questions concerning purchasing, selling or chartering a yacht, please call **+1(954)274-4435**

TABLE OF CONTENTS

TABLE OF CONTENTS	2
SPECIFICATIONS	4
Overview	4
Basic Information	4
Dimensions	4
Speed, Capacities and Weight	5
Accommodations	5
Hull and Deck Information	5
Engine Information	5
DETAILED INFORMATION	6
Accommodations	6
Galley	6
Deck & Hull	7
Electronics	7
Electrical & Mechanical	8
Notes	9
Disclaimer	9
Exclusions	9
Disclaimer	9
PHOTOS	10
Forward View	10
Bow View	10
Bimini	10
Aft View	10
Upper Helm	10
Flybridge Forward	10
Flybridge Hatch	11
Rear Raked Arch	11

Foredeck	11
Molded Steps and Door	11
Cockpit	11
Platform	11
Pasarelle	12
Aft Salon	12
Entertainment	12
Salon Settee	12
Forward Salon	12
Lower Helm	12
Lower Controls	13
Bow and Stern Thrusters	13
Galley Open	13
Galley Closed	13
Master SR	13
1st Guest SR	13
2nd Guest SR	14
Clean Engine Room	14
Generator with Box	14
CONTACTS	15
Contact details	15
Telephones	15
Office hours	15
Address	15

SPECIFICATIONS

Overview

Terrific Condition and Nicely Equipped!

This luxurious Azimut 42 Flybridge has been maintained with an open checkbook. She is a sporty flybridge yacht with a 3 stateroom 2 head layout, that will turn heads wherever she goes. She has very good performance, cruising at about 28 knots and just over 32 knots when called upon. The roomy flybridge, cockpit, and salon areas make this boat tremendous for entertaining or just family fun.

The captain will love the twin Caterpillar 390hp diesel engine package with low hours, Vetus bow and stern thrusters, full electronics suite, including radar and autopilot, camera system, new Bose audio system, Intellian satellite TV system, Apple TV, Opacmare teak pasarelle, underwater lights, and so much more.

Owner has priced her for a quick sale, and will consider all offers!

Basic Information

Category: Motor Yacht

Sub Category: Flybridge

Model Year: 2002

Year Built: 2002

Country: United States

Coast Guard #: 1127571

Vessel Top: Bimini Top

Fly Bridge: Yes

Cockpit: Yes

Dimensions

LOA: 43' 4" (13.21m)

Beam: 14' 6" (4.42m)

Max Draft: 3' 5" (1.04m)

Clearance: 2' 6" (0.76m)

Speed, Capacities and Weight

Cruise Speed: 28 Kts. (32 MPH)

Max Speed: 32 Kts. (37 MPH)

Displacement: 24000 Pounds

Water Capacity: 132 Gallons

Fuel Capacity: 317 Gallons

Accommodations

Total Cabins: 3

Total Berths: 5

Sleeps: 6

Total Heads: 2

Hull and Deck Information

Hull Material: Fiberglass

Hull Configuration: Deep Vee

Hull Color: White

Engine Information

Engines: 2

Manufacturer: Caterpillar

Model: 3126

Engine Type: Inboard

Fuel Type: Diesel

DETAILED INFORMATION

Accommodations

- Carpeted interior
- Cherry wood joinery
- Cruisair air conditioning systems
- Master Forward Stateroom- centerline double berth
- Master- storage drawers under berth
- Master- hanging locker with 2 drawers below
- Master- linen closet (2 shelves, 2 drawers)
- Master- Samsung TV
- Master- privacy door
- Master- overhead & reading lights
- Master- ensuite head w/circular stall shower & vanity
- Master- overhead hatch and portholes
- Guest Starboard Stateroom- side by side twin berths
- Guest- hanging locker with drawers below
- Guest- built-in nightstand
- Guest- Samsung TV
- Guest- privacy door
- Guest- porthole
- Guest- overhead & reading lights
- Guest- ensuite head w/circular stall shower & vanity
- Guest Port Stateroom- over-under twin berths
- Guest- hanging locker
- Guest- porthole
- Guest- overhead & reading lights
- Salon- SS and glass sliding doors to cockpit
- Salon- starboard Italian leather C-shaped sofa
- Salon- adjustable height and folding wood table
- Salon- tall entertainment and storage unit
- Salon- custom draperies
- Salon- Samsung TV
- Salon- Bose stereo system and speakers
- Salon- Sony XR-CA300 stereo/CD
- Salon- Apple TV
- Lower Helm- raised double helm bench
- Lower Helm- port and stbd opening side windows

Galley

- Galley up to port
- Wood cabinetry
- Under floor storage
- Isotherm under counter refrigerator
- Ceran electric 2 sealed burner stove
- GE microwave
- Twin basin sink

Deck & Hull

- SS bow railing
- Anchor locker
- Anchor with chain & rode
- Nemo hatch
- Foredeck sunpad
- Wide side decks
- Cockpit padded bench (storage under)
- Cockpit refrigerator
- Cockpit rope/storage lockers
- Cockpit table (under engine room hatch)
- Pasarelle
- Integrated swim platform
- Swim ladder
- Double transom gates
- Cockpit engine room/mechanical access
- Molded steps to flybridge (no ladder!)
- Flybridge plexi steps hatch
- Flybridge white bimini top
- Flybridge rear raked low profile arch
- Flybridge 2 person helm bench with grabrail
- Flybridge helm storage console
- Flybridge aft sunpad with cover
- Flybridge large settee C-shaped with cover
- Upper helm controls cover
- Upper helm plexi windscreen

Electronics

- Compass
- Garmin 4208
- Raymarine RL70C Pathfinder (2)
- Raytheon ST6000+ autopilot

- Raytheon ST5000+ autopilot
- Raymarine closed array radar
- Raymarine autohelm (depth/speed)
- West Marine VHF580 VHF
- Shakespeare VHF antennae
- Quick anchoring display/control
- Intellian satellite TV
- Glomex TV antennae
- Camera system (6 points)
- Remote spotlight with helm control
- Handheld spotlight w/flybridge mount
- 3 post SS electronics mast (arch mounted)

Electrical & Mechanical

- Twin diesel Caterpillar 3126 390hp each (600 hrs)
- ZF electronic single lever controls
- Deluxe Azimut wood wheel (lower helm)
- Kohler generator in sound box (1036 hrs)
- Cruisair A/C systems
- Cruisair SMXII controls
- Windlass w/helm and foot button controls
- Vetus bow and stern thrusters
- Opacmare teak pasarelle
- Cockpit refrigerator
- Transom shower
- Underwater lights
- Shorepower (50a)
- Dolphin 12v 80a battery charger
- Batteries
- Vacuflush heads
- Racor filters
- Charles TV/phone connection
- 12v accessories plug
- Dockside water connection
- Fireboy fire suppression system
- Kidde fire extinguishers
- Trumpet horn
- High water alarm
- Automatic bilge pumps
- Henderson manual bilge pump
- Hydraulic steering
- Hot water heater

- Bennett trim tabs
- Windshield wipers (2)

Notes

- Excludes owner personal items

Disclaimer

The Company and agent offer the details of this vessel in good faith but cannot guarantee or warrant the accuracy of this information nor warrant the condition of the vessel. A buyer should instruct his agents, or his surveyors, to investigate such details as the buyer desires validated. This vessel is offered subject to prior sale, price change, or withdrawal without notice.

Exclusions

Owner's personal belongings.

Disclaimer

The Company offers the details of this vessel or yacht in good faith but cannot guarantee or warrant the accuracy of this information nor warrant the condition of the vessel. A buyer should instruct his representatives, agents, or his surveyors, to investigate such details as the buyer desires validated. This vessel or yacht is offered subject to prior sale, price change, or withdrawal without notice.

PHOTOS

Forward View



Bow View



Aft View



Bimini



Upper Helm



Flybridge Forward



Flybridge Hatch



Rear Raked Arch



Foredeck



Molded Steps and Door



Cockpit



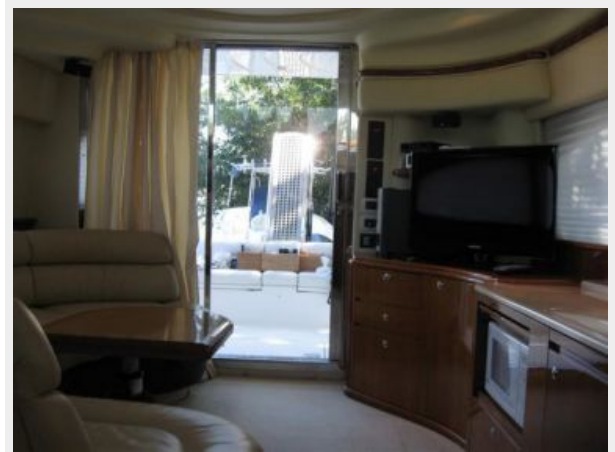
Platform



Pasarelle



Aft Salon



Entertainment



Salon Settee



Forward Salon



Lower Helm



Lower Controls



Bow and Stern Thrusters



Galley Open



Galley Closed



Master SR



1st Guest SR



2nd Guest SR



Clean Engine Room



Generator with Box



CONTACTS

Andrey Shestakov, leading yacht broker of the sales department of Shestakov Yacht Sales Inc. Shestakov Yacht Sales Inc., the official representative of the Miami/Fort Lauderdale FL headquarters.

Contact details

Email:
andrey@shestakovyachtsales.com

Web: shestakovyachtsales.com/en/

Telephones

USA: **+1(954)274-4435**

Office hours

Monday – Saturday: **9:00 - 21:00 EDT**

Sunday: **closed**

Address



Harbour Towne Marina, 850 NE 3rd St,
STE 213, Dania, FL 33004