

# GODSPEED — ENDEAVOUR CATAMARAN INC



**Судостроитель:**  
ENDEAVOUR CATAMARAN INC

**Год постройки:** 2008

**Модель:** Катамаран

**Цена:** ЦЕНА ЯХТЫ ПО ЗАПРОСУ

**Местонахождение:** United States

**Длина общая:** 36' 0" (10.97m)

**Ширина:** 15' 0" (4.57m)

**Мин. осадка:** 2' 10" (0.86m)

Купить **GODSPEED — ENDEAVOUR CATAMARAN INC** а также выбрать подходящую вам яхту из нашего каталога яхт вам поможет опытный яхтенный брокер Андрей Шестаков. На сегодняшний день компания **Shestakov Yacht Sales Inc.** имеет большое количество яхт в собственном списке продаж, а также тесно сотрудничает со всеми крупными яхтенными производителями по всему миру. Для того чтобы купить яхту **GODSPEED — ENDEAVOUR CATAMARAN INC** а также проконсультироваться по любому вопросу связанному с покупкой, продажей, чартером яхт позвоните по телефону **+7(918)465-66-44**.

# ОГЛАВЛЕНИЕ

ОГЛАВЛЕНИЕ	2
ХАРАКТЕРИСТИКИ	5
Обзор	5
Основная информация	5
Размеры	5
Скорость, вместимость и масса	5
Размещение	5
Корпус и палуба	6
Информация о двигателе	6
ПОДРОБНОЕ ОПИСАНИЕ	7
Introduction	7
Vessel Walkthrough & Accommodations	7
Salon	7
Galley	8
Master Stateroom	8
Guest Staterooms	8
Head	9
Engines	9
Electrical	9
Helm	10
Electronics	10
Deck & Hull Equipment	10
Исключения	11
Отказ от ответственности	11
ФОТОГРАФИИ	12
Foredeck with Bow Seats	12
Windlass	12
Two large Storage Compartments/Anchor Locker	12

Opening Hatches to MSR and Salon	12
Port Side Deck Aft	13
Solar Panels, Helm Air Conditioning, Radar	13
Comfortable Florida Room!	13
Helm Area Forward	13
Helm with Great Visibility	13
Helm to Port	13
Raymarine Electronics	14
Adjustable Admiral Seat	14
Entrance into Salon	14
Flat Screen TV and Ice Maker	14
Salon Forward	14
Galley to Port	14
Refrig/Freezer	15
Galley Forward	15
MSR Athwartship	15
Plenty of Light or Privacy	15
Galley Aft to Guest Stateroom	15
Force 10 3 Burner Stove	15
Guest Stateroom	16
Berth Lifts Up for Easy Engine Access	16
Yanmar 150 HP	16
Salon to Starboard	16
Electrical Panel	17
Stereo/VHF	17
Head Forward	17
Large Separage Shower	17
Head	18
Salon Looking Out Companionway	18

---

КОНТАКТЫ	19
-----	-----
Контактная информация	19
-----	-----
Телефоны	19
-----	-----
Время работы	19
-----	-----
Адрес	19
-----	-----

# ХАРАКТЕРИСТИКИ

## Обзор

GODSPEED is a roomy trawlercat that is lots of fun with her "go anywhere" shoal draft and wide decks to safely move about. Larger than the typical 36 footer, she has a fully functional outside salon with great views, which provides very comfortable entertainment amenities for family and friends. Preliminary listing brochure. More photos soon.

## Основная информация

<b>Тип судна:</b> Катамаран	<b>Подкатегория:</b> Крейсер
<b>Модельный год:</b> 2008	<b>Год постройки:</b> 2008
<b>Страна:</b> United States	<b>Кубрик:</b> Да

## Размеры

<b>Длина общая:</b> 36' 0" (10.97m)	<b>Длина по ватерлинии:</b> 34' 6" (10.52m)
<b>Ширина:</b> 15' 0" (4.57m)	<b>Мин. осадка:</b> 2' 10" (0.86m)

## Скорость, вместимость и масса

<b>Водоизмещение:</b> 16000 Pounds	<b>Вместимость воды:</b> 115 Gallons
<b>Вместимость сточного бака:</b> 30 Gallons	<b>Объем топливного бака:</b> 300 Gallons

## Размещение

<b>Всего кают:</b> 3	<b>Всего коек:</b> 3
<b>Спальные места:</b> 6	<b>Всего ком. состава:</b> 1

## Корпус и палуба

---

**Материал корпуса:** Fiberglass

**Комплектация корпуса:** Катамаран

**Отделка корпуса:** Plastic

## Информация о двигателе

---

**Двигатели:** 2

**Производитель:** Yanmar

**Модель:** 4BY2-150

**Тип двигателя:** Inboard

**Тип топлива:** Diesel

---

# ПОДРОБНОЕ ОПИСАНИЕ

---

## Introduction

---

The Endeavour Trawler Catamaran is a "big" 36' boat. The 15' beam allows great living space. She features 3 staterooms and a roomy salon. Hard top over the helm station provides weather protection and additional living space. She cruises efficiently at 8-12 knots, burning only 2.3 gallons per hour at 8 knots. Props are protected if you get into "skinny" water. **Godspeed** is ready for your cruising adventures!

## Vessel Walkthrough & Accommodations

---

Climb aboard GODSPEED and you will feel right at home. This two owner boat has been loved since the day she was splashed! With a wide beam and open interior, the Endeavour Cat has a great layout. When aboard you will enter from the large enclosed outdoor entertaining area. With a hard top and full enclosure, owners enjoy this space underway and at anchor.

As you descend the companionway steps into the salon, you will immediately notice the quality interior finishes and teak trim. The salon is large with a fixed table that can extend for additional dining area. There is teak and holly laminated flooring throughout.

Forward of the salon and accessed from the port hull, is the master stateroom with a queen size berth, opening hatches and plenty of storage.

Each hull has a large double stateroom aft with ample light and ventilation. Overhead hatches and opening side ports provide light and ventilation. A hanging locker and drawers are included in each stateroom.

The galley is in the port hull with large overhead windows and plenty of workspace and storage.

The starboard hull contains the head and separate shower. A huge storage locker is in the forward area of the starboard hull.

## Salon

---

- Cruiseair Air Conditioning 16,000 BTU
- Large L-shaped settee
- Fold-away table with slide out extension
- LCD flat screen TV with "Track It" (follow me) satellite system for reception, as well as Shakespeare TV antenna
- U-Line Ice maker
- Open and airy feel - 15 ft. beam!
- (2) ventilation fans

- Magazine rack
- Storage
- Smoke detector

## Galley

---

GODSPEED'S spotless Galley is located in the port hull and features everything needed to make the chef happy! You can easily create an elegant meal or fix a quick snack while enjoying the view.

- Nova Kool side-by-side refrigerator/freezer
- Force 10 3-burner propane stove and oven
- Tappan microwave
- Stainless double sinks - large!
- Single lever faucet with extendable spray nozzle
- Hot & cold pressure waterSeagull IV water filter system below the galley basin
- Great storage - drawers, cabinets and overhead cabinets
- Opening port for ventilation
- Solid surface countertops
- Fire Extinguisher

## Master Stateroom

---

- Raised queen berth
- Large opening hatches
- Side opening port
- Two reading lamps
- 12v fan
- Shelf storage for books, etc.
- Hanging locker
- Drawers
- Small sitting area

## Guest Staterooms

---

### Guest Stateroom Port Aft:

- Double berth
- Large overhead hatch
- Side opening ports - 2 each for flow thru ventilation
- Reading lamp
- 12v fan



- Hanging locker
- Drawers

### **Guest Stateroom Starboard Aft:**

- Double berth
- Large overhead hatch
- Side opening ports - 2 each for flow thru ventilation
- Reading lamp
- 12v fan
- Hanging locker
- Drawers

## **Head**

---

The head is located in the forward starboard pontoon.

- Separate stand-up fiberglass shower stall with overboard water pump out
- 12v Whale Gulper Pump for shower
- Vanity with oval sink, mirror and storage
- Large medicine cabinet
- Opening port
- 12 volt Jabsco fresh water marine head with macerator

## **Engines**

---

**Great access under guest stateroom berths with plenty of room to get around.**

- Twin Yanmar 4JH3-DTE diesels fresh water cooled
- Twin Racor 500-series fuel filters with vacuum gauges
- 300-gallon fuel tank provides 1000 mile range
- Reverso OP-6 12 volt oil change pumps, one for each engine and generator
- Power trim tabs
- Protected prop pockets
- Four blade props
- Tides Marine Dripless Shaft Seals
- Each engine compartment is equipped with FE241 system, thermal activation with indicating light at the helm

## **Electrical**

---

- 30 amp 110v Input

- AC/DC Panel
- Xantrex Truecharge 40 Battery Charger
- Xantrex X Power, 1750 watt inverter
- NextGen 5.5 kW Genset - 155 hours
- (2) 80 watt solar panels on hard top
- 6 gallon water heater

## Helm

---

- Great outdoor enclosed space
- Settee with port & starboard seating
- Table with fold-away leaf
- Swivel helm chairs
- Hard top (fiberglass) with windows
- Carrier Air V rooftop unit at the bridge deck area
- Full enclosure with ventilation and door
- Sony CDX-M10 am/fm/cd with remote control
- 12V Outlet
- Two 12v fans
- Horn replaced
- Running lights replaced

## Electronics

---

- Raymarine C120, combination plotter/gps/radar, powers up. 48 nm radar with closed array mounted on hardtop
- Raymarine AIS Receiver - displays on C120
- Raymarine ST6002 Autopilot
- Raymarine ST60 depth
- 3" Ritchie Compass
- Standard Horizon Matrix, AIS +, with Icom Command mic at helm, main radio port forward salon
- AM/FM CD w/ 4-Speaker Remote

## Deck & Hull Equipment

---

GODSPEED is easy to board and easy to get around! Wonderful side decks make docking,

locking, and anchoring a breeze!

- Lifelines and Stanchions--lifeline gates
- Removable bow seats
- Hard top with glass windshield
- Windshield wipers
- Three very large deck lockers--2 at the bow, 1 in the cockpit
- Stainless cleats
- Remote Search Light
- Deck Shower
- Anchorlift 12v windlass
- 55 lb Delta anchor with 200' 5/16 chain, 100' 5/8" 3 strand nylon rode
- Fortress FX-16 anchor with 200' of 3/4" marine grade nylon rode, and a length of G4 galvanized chain 10' 5/16 chain
- Fresh water wash down at bow
- Saltwater pump and deck outlet added at bow for anchor wash down
- Dinghy davits
- Motor mount on stern stanchion
- Lifesling
- (6) Dock lines
- Fender boards
- SS Fender holders
- Bottom painted December 2014

## Исключения

---

При продаже яхты исключаются личные вещи владельца.

## Отказ от ответственности

---

Компания предоставляет описание судна или яхты добросовестно, но не может гарантировать точность этой информации, а также не ручается за техническое состояние. Покупатель должен проинструктировать своих агентов или оценщиков исследовать представленную информацию более подробно, по собственному желанию. Продажа судна или яхты, изменение цены или снятие с продажи будет происходить без предварительного уведомления.

# ФОТОГРАФИИ

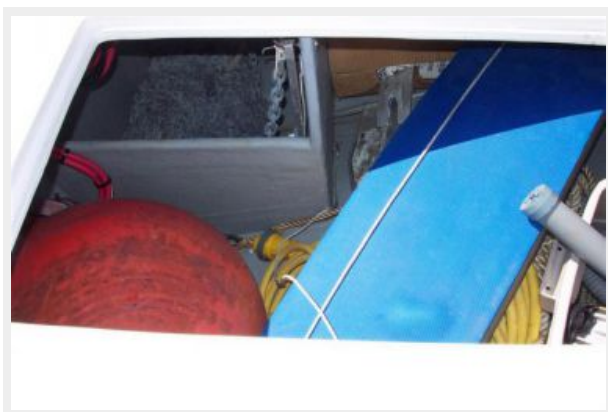
**Foredeck with Bow Seats**



**Windlass**



**Two large Storage Compartments/Anchor Locker**



**Opening Hatches to MSR and Salon**



**Port Side Deck Aft**



**Solar Panels, Helm Air Conditioning, Radar**



**Comfortable Florida Room!**



**Helm Area Forward**



**Helm with Great Visibility**



**Helm to Port**



**Raymarine Electronics**



**Adjustable Admiral Seat**



**Entrance into Salon**



**Flat Screen TV and Ice Maker**



**Salon Forward**



**Galley to Port**



**Refrig/Freezer**



**Galley Forward**



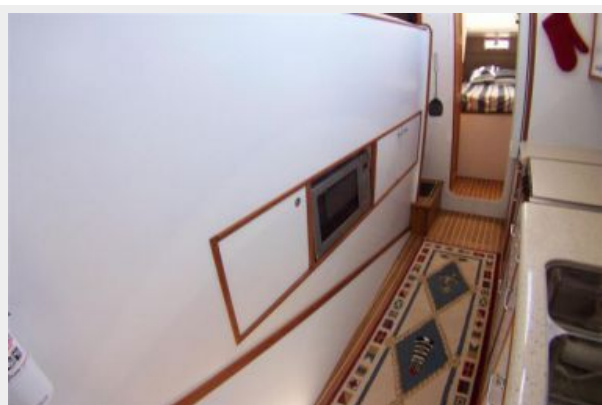
**MSR Aftwartship**



**Plenty of Light or Privacy**



**Galley Aft to Guest Stateroom**



**Force 10 3 Burner Stove**



### Guest Stateroom



### Berth Lifts Up for Easy Engine Access



### Yanmar 150 HP



### Salon to Starboard





**Stereo/VHF**



**Electrical Panel**



**Head Forward**



**Large Separage Shower**



## Head



## Salon Looking Out Companionway



# КОНТАКТЫ

---

Андрей Шестаков (Andrey Shestakov) – ведущий яхтенный брокер отдела продаж яхт и судов компании Shestakov Yacht Sales Inc. Официальный представитель Shestakov Yacht Sales Inc. для русскоговорящих клиентов в центральном офисе компании в Майами/Форт Лодердейл/Флорида/США.

## Контактная информация

---

Email: [andrey@shestakovyachtsales.com](mailto:andrey@shestakovyachtsales.com)

Web: [shestakovyachtsales.com](http://shestakovyachtsales.com)

## Телефоны

---

Краснодарский край: **+7(918)465-66-44**

США, Майами, Флорида: **+1(954)274-4435**

## Время работы

---

Понедельник – Суббота: **9:00 - 21:00**  
EDT

Воскресенье: **Закрито**

## Адрес

---



Harbour Towne Marina, 850 NE 3rd St,  
STE 213, Dania, FL 33004